



Avid® Editing Application

ReadMe for Media Composer® v2021.9

Revision History

Date	Description
October 7, 2021	Updated Changed in Media Composer v2021.9 to add change to Clear Bin Memory button location and Qualified Hardware and Operating Systems to clarify macOS.
October 1, 2021	Added MCCET-4191 and MCCET-4725 to Fixed in Media Composer v2021.9

IMPORTANT: Avid periodically makes software updates available for download on [Avid.com](http://www.avid.com/us/support/downloads) at the following location:www.avid.com/us/support/downloads. Please check the above site regularly for information on available downloads for your product.

Important Information

Avid® recommends that you read all the information in this ReadMe file thoroughly before installing or using any new software release.

Important: Search the Avid Knowledge Base for the most up-to-date ReadMe file, which contains the latest information that might have become available after the documentation was published.

This document describes compatibility issues with previous releases, software installation instructions, hardware and software requirements, and summary information on system and memory requirements. This document also lists hardware and software limitations.

Contents

If You Need Help. 3

Media Composer Notes 4

Fixed in Media Composer v2021.9 9

Limitations. 13

Notes on Software Licensing. 17

Qualified Hardware and Operating Systems 18

Feature Performance 37

Compatibility Chart 41

Setting up the NVIDIA Card. 44

Shared Storage Support 45

Symbols and Conventions

Avid documentation uses the following symbols and conventions:

Symbol or Convention Meaning or Action



A note provides important related information, reminders, recommendations, and strong suggestions.



A caution means that a specific action you take could cause harm to your computer or cause you to lose data.



A warning describes an action that could cause you physical harm. Follow the guidelines in this document or on the unit itself when handling electrical equipment.



A user tip provides a helpful hint that can aid users in getting the most from their system.



A shortcut shows the user keyboard or mouse shortcuts for a procedure or command.

Symbol or Convention	Meaning or Action
>	This symbol indicates menu commands (and subcommands) in the order you select them. For example, File > Import means to open the File menu and then select the Import command.
▶	This symbol indicates a single-step procedure. Multiple arrows in a list indicate that you perform one of the actions listed.
(Windows), (Windows only), (macOS), or (macOS only)	This text indicates that the information applies only to the specified operating system, either Windows or macOS.
Bold font	Bold font is primarily used in task instructions to identify user interface items and keyboard sequences.
<i>Italic font</i>	Italic font is used to emphasize certain words and to indicate variables.
Courier Bold font	Courier Bold font identifies text that you type.
Ctrl+key or mouse action	Press and hold the first key while you press the last key or perform the mouse action. For example, Command+Option+C or Ctrl+drag.
(pipe character)	The pipe character is used in some Avid product names, such as MediaCentral Production Management. In this document, the pipe is used in product names when they are in headings or at their first use in text.

If You Need Help

If you are having trouble using your Avid product:

1. Retry the action, carefully following the instructions given for that task in this guide. It is especially important to check each step of your workflow.
2. Check this ReadMe file for the latest information that might have become available after the documentation was published. Also check online for the most up-to-date ReadMe because the online version is updated whenever new information becomes available. To view the online ReadMe, select ReadMe from the Help menu, or visit the Knowledge Base at <http://www.avid.com/readme>.
3. Check the documentation that came with your Avid application or your hardware for maintenance or hardware-related issues. In addition to the printed documentation supplied with your editing application, the documentation is supplied in PDF format when you install the application. Topics that you print from the Help have limited page layout and formatting features. If you want to print a higher quality version of Help information, Avid recommends

that you print all or part of the PDF version of the appropriate Avid manual included in the Online Library for your editing application. To access the Online Library, select Help > Online Library from within your Avid editing application.

4. Visit Avid Online Support at www.avid.com/onlineSupport/. Online support is available 24 hours per day, 7 days per week. Search the Knowledge Base to find answers, to view error messages, to access troubleshooting tips, to download updates, and to read or join online message-board discussions.

Media Composer Notes



(mac Only) macOS Catalina does not support 32 bit applications. The legacy Title Tool, Marquee Title Tool and QuickTime legacy codecs are no longer installed when you install Media Composer. If you are installing Media Composer on a system with a pre-Catalina OS, a separate installer is provided that allows you to choose to install the Title Tool, Marquee, and QuickTime legacy codecs. Only install legacy codecs if QuickTime is installed on your system. The installer is Media Composer Legacy Components 2021.12.1 Mac. You can get the installer from MyAvid, Link, or the download center.



MCDEV-11537 If you intend to use full-frame stereoscopic with an Avid Artist DNxIQ, you may want to remain with Media Composer v2018.12.x until the issues with Stereoscopic support are resolved in a future version.



(Mac) You might receive an “Is not optimized for your Mac” message while launching Media Composer for the first time on a Mac OS 10.14.x system. Press OK to continue.

- (MCCET- 2541) When working with Avid Artist DNxIO or Avid Artist DNxIQ, you should disable the Line In recording input (BlackMagic Audio in the Windows OS).
- Avid recommends that you **do not** install Desktop Video software version 10.10.1 on Media Composer versions prior to v2018.5.1.
- **Avid Artist DNxIO and Avid Artist DNxIQ:** If you are using Avid Artist DNxIO, Avid Artist DNxIQ, or a BlackMagic Designs video device, please update to Desktop Video software version v11.0 or higher. If you are using Avid Artist DNxIV and Avid Artist DNxIP please update to AJA software v15.2 or later.
- **Qualified Operating Systems:** For information on qualified operating systems, see [Qualified Hardware and Operating Systems](#).
- **Dongle Info (Mac Only):** The Dongle Sentinel driver installer is no longer automatically installed when you install the editing application. The driver is now located in the Avid_Uilities folder (/Applications/Utilities/Avid_Uilities/Sentinel_Driver). If you have a dongle, manually install the driver from this location.



When installing the Sentinel Driver, check your System Preferences and select “Security and Privacy.” You may need to choose to Allow the driver to be accessed.

- Media Composer now includes a **dnxmov2mxf** executable in the \Program Files\Avid\Avid Media Composer\SupportingFiles\Utilities folder. This executable allows you to manually convert MOV files with DNX essence with separately stored alpha to an MXF OP1a file with DNX essence and embedded alpha.

The tool is available for Windows, osX and Linux. To run on Windows, Visual C++ Redistributable for Visual Studio 2015 or Visual C++ Redistributable for Visual Studio 2017 is required.

Run the command from a command prompt on Windows or from terminal on macOS.

DNXMOV2MXF usage is:

```
dnxmov2mxf path_to_mov [path_to_mxf]
```

Security Guidelines

As system and network security attacks become increasingly more inventive and persistent, Avid has adopted a new security strategy to help you, our customer and partner, better protect your assets and intellectual property. As you might know, Avid has traditionally recommended Symantec Endpoint Protection as the preferred and qualified solution for much of the Avid product line. As of Q3, 2020, Avid introduced a more flexible strategy that provides general guidelines for protecting your Avid systems. This new policy allows you to choose the best security solution for your organization, while still following Avid best practices. Avid Media Composer allows you to install an endpoint detection and response solution on your system. While Avid does not support any specific solution, you can find general guidelines and information related to CrowdStrike Falcon on the following Avid Knowledge Base page:

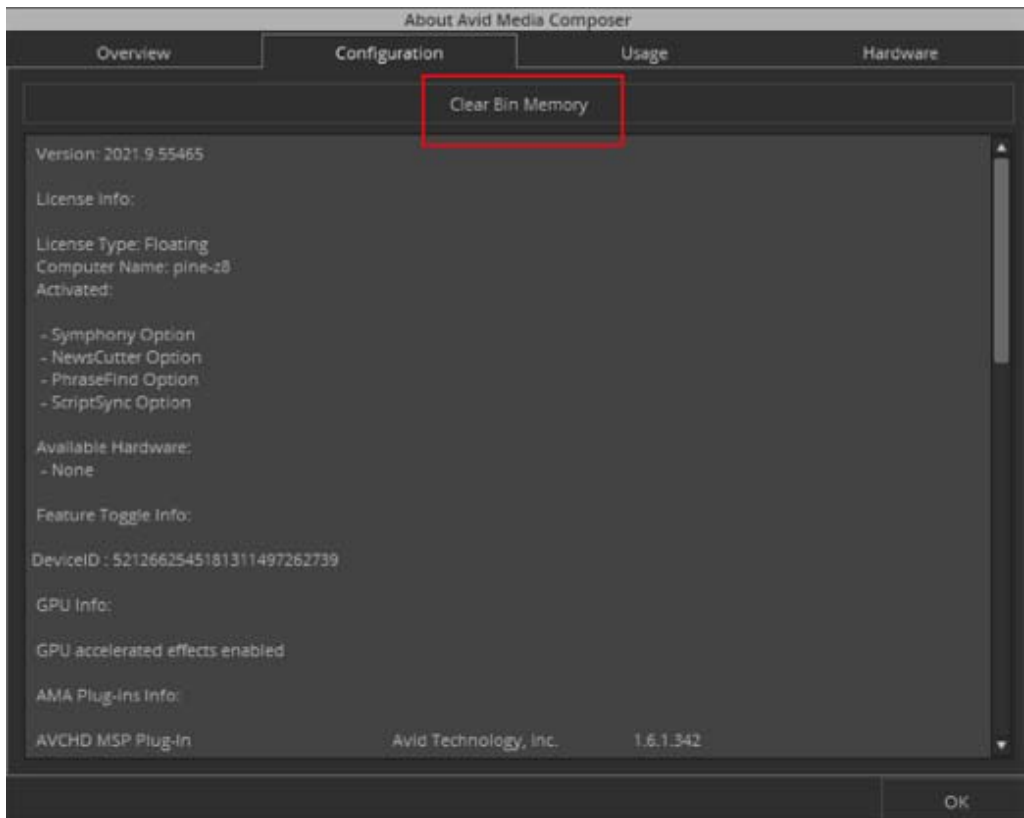
https://avid.secure.force.com/pkb/articles/en_US/troubleshooting/en239659

Changed in Media Composer v2021.9

The following have changed with Media Composer v2021.9:

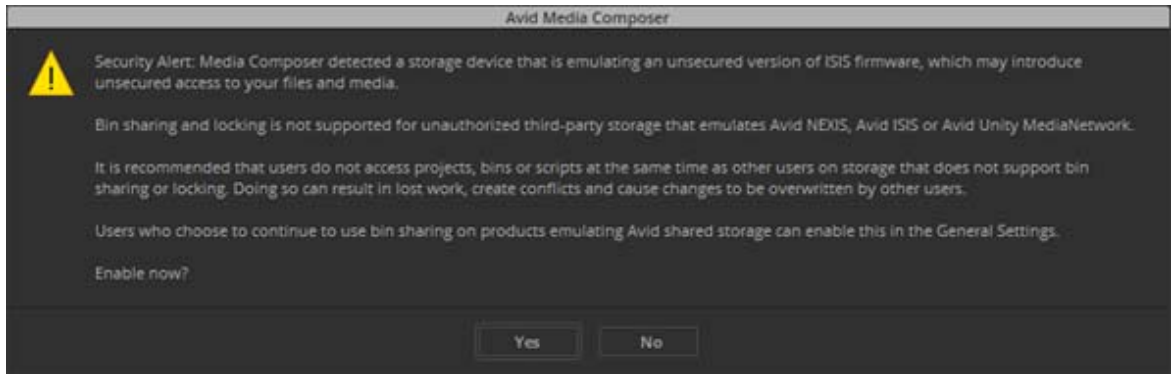
Clear Bin Memory Button Location Change

The Clear Bin Memory button is located on the Configuration tab of the About Media Composer menu. You can access About Media Composer from the Help menu.



Updated Message

The editing application notifies you if your third party storage is emulating Avid NEXIS or Avid ISIS storage. With this release, the error message has been updated:



In addition, this message appears:

- When you install an updated version of Media Composer, even if you have seen the message before.
- When you open a shared project on any system.
- When you open a new project created on any system

Default Change for Bin Frame View

With this release, you will notice the following: If clips have an assigned clip color, the color will appear as a border on clips in Frame View by default. You will see this change if you create a new user setting after installing Media Composer v2021.9.

(macOS) No Restart after Install

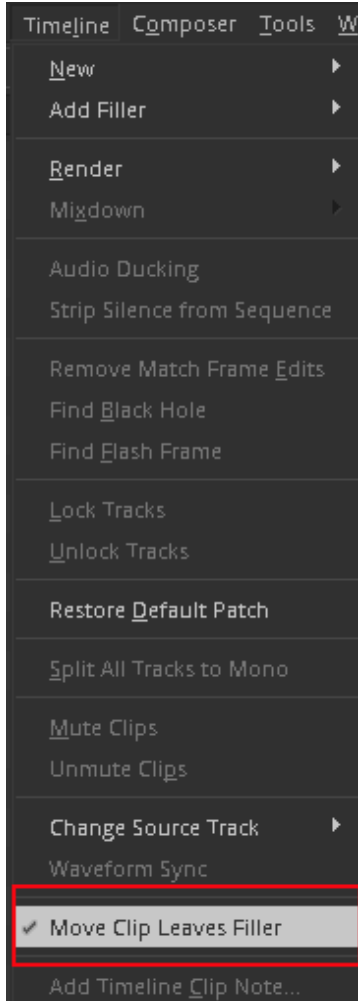
With this release, if you are on a macOS system, you do not have to restart after installing Media Composer.

macOS

See the latest macOS versions supported in [Qualified Hardware and Operating Systems](#).

Move Clip Leaves Filler

You can use an option in the Timeline menu that allows you to leave filler when you move clips up and down over multiple tracks in a sequence. When you select the Move Clip Leaves Filler option in the Timeline menu, a check mark appears next to the option indicating it is enabled. When you do not want to leave filler, simply select the Move Clip Leaves Filler option again to remove the check mark.



You can easily map this command to your keyboard. See “Mapping Menu Commands” in the Help.

Improved Bin Column Width Adjustments

Bin Column widths can now be manually adjusted. Simply drag the separator between column headers to resize the column. The bin width is saved when you save or close the bin. You can also double-click on the separator between columns to resize the entire column, not just the visible area.



Some non-text columns such as Frame or Color are fixed and cannot be manually adjusted.

Fixed in Media Composer v2021.9

- **Bug Number:** MCCET-4275. Opening large sequences containing SubCap effects crashed Media Composer.
- **Bug Number:** MCCET-4191. The TRK bin column heading was changed to lowercase Trk for imported ALE files, which did not pass the track data via AAF to Pro Tools.
- **Bug Number:** MCCET-4202. You may have received a “writing properties to asset manager” error when checking in a Matte key clip.
- **Bug Number:** MCCET-4218. In some instances, QuickTime with alpha MOV files appear offline after import.
- **Bug Number:** MCCET-3119. Some Avid Titler+ font names may have displayed as “Invalidate label encoding” in the Effect Editor window.
- **Bug Number:** MCCET-4164. (macOS) Avid Titler+ English alphabet characters were left behind once you selected Chinese Pinyin characters.
- **Bug Number:** MCCET-4177. In some instances, media was offline in the Timeline on some of the clips and adjusting Dynamic Relink would not bring it online.
- **Bug Number:** MCCET-4188. (Production Management) XDCAM HD media was offline after checkout and you could not get the media online.
- **Bug Number:** MCCET-4305. Using Quick Find in the Timeline might have crashed Media Composer.
- **Bug Number:** MCCET-3893. (macOS v10.15.x) In some instances, previously saved Export Settings were not saved properly.

- **Bug Number:** MCCET-4296. After closing and opening Media Composer, some docked and tabbed windows were not retained.
- **Bug Number:** MCCET-4280. In some instances, working in the Audio Mixer crashed Media Composer.
- **Bug Number:** MCCET-4091. UHD 100p projects might create a duplicate timecode frame in a 25 fps Timebase.
- **Bug Number:** MCCET-4187. Segment buttons from (Command Palette - Edit) did not work the same as the Segment buttons from (Command Palette - Smart Tools).
- **Bug Number:** MCCET-4183. In some instances, the User Interface would appear to freeze or hang if you were working with a large project with many bins.
- **Bug Number:** MCDEV-15040. You might have received an “AAF import” when performing an update from Production Management for a sequence containing an Avid Titler+ effect.
- **Bug Number:** MCCET-4114. Dragging a saved Audio Track Effect from a bin to the Audio Mixer [+] did not apply the effect.
- **Bug Number:** MCCET-3705. (Production Management) Video track name changes might not have saved properly during check in/check out.
- **Bug Number:** MCCET-4065. In some instances, the clip color changed on transcoded clips with alpha.
- **Bug Number:** MCCET-4159. In some instances, with Dynamic Relink enabled, a sequence showed different clips offline depending on the version of Media Composer.
- **Bug Number:** MCCET-4167. (Japanese OS) Dragging an effect from the Effects Palette moved the highlighted effect category up unexpectedly.
- **Bug Number:** MCCET-4079. Site settings for Media Creation were not working for some codecs.
- **Bug Number:** MCCET-3847, MCCET-4155. Default Media Creation settings for new projects and when switching to a different project format might have been incorrect.
- **Bug Number:** MCCET-3510. Even after changing the Media Creation setting, video resolution reverted to default in 1080p50 projects.

- **Bug Number:** MCCET-4100. Media Creation Settings defaulted to H.264 800kbps proxy in 1080p/24 projects.
- **Bug Number:** MCCET-4013. If the RED AMA plug-in was installed on an Edit on Demand system, Scriptsync did not display script marks.
- **Bug Number:** MCCET-4137. A .transfer sequence did not play in MediaCentral | UX if stereo was enabled in the Transfer Settings.
- **Bug Number:** MCCET-4198. You might have had problems importing/linking DNxHR HQX media.
- **Bug Number:** MCCET-4063. In some instances, mixing DNxHD SQ media created by EVS, Media Director or Fastserve displayed in the bin as mixed resolution.
- **Bug Number:** MCCET-3842. Desktop Play Delay resulted in an “ADM_PLAY_NOT_ARMED” error when hitting play with NDI enabled.
- **Bug Number:** MCCET-4032. (Production Management) If you deleted a clip in Access, the media would not display as offline, instead you would receive a “Disk File Not Found” error.
- **Bug Number:** MCCET-4080. The Tool Palette window did not retain its size.
- **Bug Number:** MCCET-4052. Some H265 (HEVC) files could not be linked or imported successfully.
- **Bug Number:** MCCET-4201. When reopening a project, the Avid MediaCentral | UX panel opens on top of the Media Composer UI.
- **Bug Number:** MCCET-4200. The List Tool did not recall custom presets properly.
- **Bug Number:** MCCET-4227. The Timecode Burn-In effect did not display properly when changing the Timecode display setting.
- **Bug Number:** MCCET-3903. You might have received a “PMM_MISMATCH_UNKNOWN_ATTR” error when trying to capture from SD DV through 1394 (firewire).
- **Bug Number:** MCCET-4005. If waveforms were enabled, six hour captures of “In progress” (EWC) clips were extremely slow.
- **Bug Number:** MCCET-4264. You might have seen a Waveform Engine crash when opening a bin, closing a bin, loading a sequence, or clearing a sequence.

- **Bug Number:** MCCET-4195. Capitalized names were sorted first regardless of alphabetical order in the Project window.
- **Bug Number:** MCCET-4240. In some instances, Telestream Live Capture was offline for V1, A1.
- **Bug Number:** MCCET-4224. In some instances, the Source Browser was not maximized enough to display the Link and Import buttons.
- **Bug Number:** MCCET-4029. The FrameFlex size slider did not go beyond 100% in the FrameFlex top viewer.
- **Bug Number:** MCCET-3997. Window position was not saved in Workspaces.
- **Bug Number:** MCCET-4169. You may not have received a warning message when exporting XDCAM HD 50 (RDD9) exceeding 8 audio tracks.
- **Bug Number:** MCCET-4203. Apple ProRes 422 clips with 16bit PCM audio could not be linked using the UME plug-in.
- **Bug Number:** MCCET-4011. You were unable to link to ProRes 422HQ QT movie with UME plug-in, but could link with QuickTime plug-in.
- **Bug Number:** MCCET-3861. You could not successfully link or import ProRes HQ files recorded with Odyssey™ by Convergent Design.
- **Bug Number:** MCCET-3952. In some instances, mp4 files were out of sync.
- **Bug Number:** MCCET-4292. You might have seen redraw issues in the Source monitor when viewing 4 and 9 way MultiCam with NDI enabled.
- **Bug Number:** MCCET-3972. Performing a Long-GOP Send to Playback to FastServe failed if a local Transfer Engine was running.
- **Bug Number:** MCCET-4266. In some instances, after performing a Send To Playback, the Data track was stripped from the .transfer sequence.
- **Bug Number:** MCCET-4182. In some instances, 3D CLF LUTs did not always get applied in Media Composer.
- **Bug Number:** MCCET-4226. After performing a transcode and checkout, png files might have been offline.

- **Bug Number:** MCCET-4238. Media Composer crashed with an “Exception: Structured Exception” error when trying to transcode or consolidate certain clips.
- **Bug Number:** MCCET-4205. AAF: Consolidating media set the master clip Start Time to Mark In Time when asking for handles.
- **Bug Number:** MCCET-4274. Moving bins and folders in a project may have resulted in a crash.
- **Bug Number:** MCCET-4229. You might have received an “Exception: MXF_DIDMapperSegmented::ReadRange” error when linking IMX50 media.

Limitations

The following are known limitations

- Photoshop PSD files are not supported for AMA linking if QuickTime is not installed.
 - Some fonts, by their design, are available only in Bold. On the Mac system it can happen that selecting a font does not produce any visual changes. Try selecting “Bold.”
 - If you launch a project and receive an “Enable 3rd Party Emulation” warning, even if you select Enable in the warning dialog, you should also perform the following: Select File > Settings and click the Project tab. Click General Settings and select “Enable Bin Sharing on 3rd party storage emulating Avid NEXIS/ISIS.”
- **Bug Number:** MCDEV-15491. Right clicking on an empty cell in the Tool Palette results in a crash.
 - **Bug Number:** MCDEV-14845. Media Composer | Enterprise Admin tool does not restrict NDI when Media Composer is in software only mode.
 - **Bug Number:** MCCET-3702. Image Quality when adding UHD progressive clips to an HD interlace sequence:

The process Media Composer uses to mix and match video formats in a sequence is to transform the source clip's frame rate and frame layout to meet the project specifications; the motion adapters are added first, then spatial adapters are applied in order to provide expected playback dimensions.

For example, if you have a UHD 50p clip that you want to add to a 1080i Timeline, the UHD clip first gets split into 2 separate fields (UHD format), then each field gets independently resized to 1920x540 in HD. The export process puts those resized fields back together into a progressive HD frame but does not maintain the clarity of the original progressive frame.

Workaround: If you first transcode the UHD progressive clip to HD progressive and then add the HD clip to the interlace sequence, it forces the resize operation from UHD to HD to be done before the split gets into interlace mode.

- **Bug Number:** MCCET-3788. You might receive a “*clip name* is a clip in a multi-essence file that cannot be exported using the specified Embedded in AAF setting” when exporting embedded AAFs with OP1a audio clips.

Workaround: Consolidate the OP1a clips to Avid OP-Atom prior to performing the export.

- **Bug Number:** APPSVCS-723. The Collab App in MediaCentral CloudUX window does not currently work with Media Composer.
- **Bug Number:** MCDEV-13604. You might have issues playing clips containing Media Composer effects in the Baselight User Interface if the Fast Image Access option is enabled in the Baselight plug-in
- **Bug Number:** MCDEV-12926. (macOS) If you have upgraded to macOS 10.15.4, there is a known issue with local attached RAID storage. The system will hang when running Media Composer or copying large files. This does not happen with earlier versions of the OS. You can read details about this issue [in this blog](#). This limitation no longer exists with macOS 10.15.5.
- **Bug Number:** MCDEV-12988. (macOS) The AMA Drastic plug-in is not supported with Media Composer v2020.4
- **Bug Number:** MCDEV-12964. For a faster performance of export audio/video sequences to .mov in 2020.4, please render the sequence prior to export, or disable the GPU fx (in the Render Settings - Current menu)
- **Bug Number:** MCDEV-12735. Maestro graphics do not appear correctly in the Timeline if your system uses the Radeon video card.
- **Bug Number:** DEFI-1808. (Media Composer | Distributed Processing) Two clips or sequences will always be created when performing a consolidate or transcode with Media Composer | Distributed Processing.
- **Bug Number:** MCDEV-11481. Promoting a title from the Title Tool application to Avid Titler+ cannot be performed if it includes a motion adapter.
- **Bug Number:** MCCET-11796. Larger than 10 bit DPX files might fail to link correctly.

Workaround: Go to File > Settings and click the User tab. In the Link Settings, click the Link Options tab and make sure Alpha Channel is set to Ignore.

- **Bug Number:** MCDEV-11430. Media Tool ignores the “Current project” filtering option and lists media files that are not associated with the current project.
- **Bug Number:** MCDEV-11197. In some instances, the Interleave option might not appear in the Export As dialog box. If you are performing an Export using the Avid Media Processor, the Interleave option should appear when you choose Stereo, 5:1, or 7.1 Audio.

Workaround: If it does not appear, briefly toggle back to the Mono setting, then toggle to Stereo Mix once again. Doing so should reveal the Interleave option.

- **Bug Number:** MCDEV-8641. (AMD Graphics). Systems with AMD graphics cards might display tearing when performing Full Screen playback.
- **Bug Number:** MCDEV-9269. (Media Composer | Cloud) After performing a remote download operation on a sequence containing AVC-I 100 remote media, the downloaded media appears as XAVC-I 100.

Workaround: Download the entire master clips.

- **Bug Number:** (macOS). You may occasionally see the menu bar flash followed by a brief beach ball. To fix this, deactivate “Displays have separate spaces” under System Preferences > Mission Control settings.
- **Bug Number:** MCDEV-9011. Intermittently, when working with the XDCAM Nablet Plug-in, you might see “Failed to get the sample position from the AMA Plug-in” errors if you have waveforms enabled in the Timeline.
- **Bug Number:** COGS-2560. While working in the Script Window, text operations (cut/copy/paste/delete/editing) can only be done in edit mode. See “Editing a Script” in the Help.
- **Bug Number:** MCDEV-5650. When working with Panasonic LongG media, you might receive an “SFPlayConsumer Timeout” error if audio waveforms are enabled.

Workaround: Turn off audio waveforms.

- **Bug Number:** MCDEV-5385. MultiCam editing with Panasonic LongG media is not supported with this release.

Before Installing the Editing Application

Media Composer | Enterprise and Media Composer | Distributed Processing

If you are working with Media Composer | Enterprise or Media Composer | Distributed Processing, please refer to the “Installation Prerequisites” section in the *Media Composer | Enterprise Administration Guide* and *Media Composer | Distributed Processing Administration Guide* to make sure you have compatible Avid MediaCentral Cloud UX Platform ISO and Avid MediaCentral Cloud UX Feature Pack ISO versions.

Avid DX Driver Separate Installer

The Avid DX Driver is not automatically installed when you install the editing application. If you need to install the Avid DX Driver to work with your Avid IO device, you can install it separately.

The installer is located:

- (Mac) /Applications/Utilities/Avid Utilities
- (Windows) Program Files\Avid\Utilities\DXDrivers

Before Installing the Editing Application in an Avid Interplay Environment



Please note the following before you install the editing application in an Avid Interplay or Avid MediaCentral environment.

Carefully read through the “Avid Editor Compatibility with Interplay Releases” guide (found in the following link) before upgrading. It might be necessary to also upgrade the Interplay components on the editing client.

http://avid.force.com/pkb/articles/en_US/compatibility/Avid-Video-Compatibility-Charts

Buffer Error Message

The editing application requires a minimum of 8GB RAM. If you try to install the editing application on a system with less than 8GB RAM, you will receive a buffer error and installation will not proceed.

Download Note

To avoid “File Path too long” or a “File cannot be copied” warning while unzipping the downloaded installer, try placing the installer .zip on the root level of your C:\ drive and unzip it from that location.

User Right to Raise Thread Priority

(Windows) Note for Domain Administrators: If your editing systems are part of a domain, you must give the user the right to “Increase Scheduling Priority.” This must be done within the Domain Group Policy on the domain controller by giving the right explicitly to the user or giving the right to a group and adding the user to that group. You will not be able to launch as a regular user if this is not set properly.

If you are part of a domain, a Domain Administrator should install and perform the first launch of the editing application.

Install as Administrator

You need to first install and launch the editing application as an Administrator. If you are in a Shared Storage environment, mount your workspaces as an Administrator. You may then log off and log back in as a Standard user, if necessary.

After Installing the Editing Application

AMA Plug-Ins

You cannot install the AMA Plug-ins while the editing application background services are running. Make sure you Stop the services before installing the AMA Plug-Ins. The stop/start background services icon is on the menu bar (Macintosh) or taskbar (Windows). Once you install the new AMA plug-in, restart the services. See “Starting and Stopping Avid Background Services” in the Help.

Notes on Software Licensing

If You Upgrade Your Operating System

If you need to upgrade your operating system after you install your Avid editing application, first deactivate your software. After you upgrade your operating system and, if required, reinstall your application, you can reactivate your software. For information on activating and deactivating your software license, see the *Installation Guide for Avid Editing Applications*.

Minimum RAM Recommendation

For this release Avid recommends 16 GB minimum, 32 GB recommended. Some features might require more RAM and specific hardware. See “[Feature Performance](#)” on page 37 for more info.

Qualified Hardware and Operating Systems

Some features are processor-intensive and require specific hardware. See “[Feature Performance](#)” on page 37 for more info.

The following tables provide the information on qualified Windows and Macintosh hardware.

For 3rd-Party Open IO hardware qualification refer to the manufacturer’s documentation. See the Open IO Frequently Asked Questions document on the Knowledge Base: http://avid.force.com/pkb/articles/en_US/faq/en422991

The following lists the qualified Operating Systems. Depending upon your hardware the qualified Operating Systems are:

- Windows v10 64-bit v 2004 or later (Professional and Enterprise).
- Macintosh 10.14.6, 10.15.7, 11.x up to 11.5.x



With the release of Mac OS v10.13.x and higher, Apple requires manual approval of loading Kernel Extensions (KEXTs). (For example BlackMagic, and AJA IO devices install Kernel Extensions.) At installation time, you should get a dialog saying that the KEXT was not loaded. You must go the “Security & Privacy” system preference and manually approve the KEXT. Keep the Security & Privacy pane open after you install the I/O device drivers so that you will see the notice that the driver has been blocked and press the “allow” button within 30 minutes of installing or the driver will be permanently blocked.

Qualified Workstations and Laptops

The following tables list the qualified workstations and laptops for Media Composer editing applications.

NOTE: NVIDIA drivers are not included with the Media Composer installer. You must access the Nvidia website - Nvidia.com to download the applicable driver.

NOTE: AMD drivers are not included with the Media Composer installer. You must access the AMD website - AMD.com to download the applicable driver.

Qualified PC Workstations with Avid Media Composer

The following PC Workstations are qualified with Avid Media Composer.



Avid Artist DNxIV requires a Thunderbolt 2 or 3 card. See [details here](#).

Qualified PC Hardware	Graphics Card	Supported with
HP Z2 G8 2.8 Ghz or higher 6, 8 core i7/i9 Xeon Intel 11th Gen Tower or SFF	Nvidia T600, T1000, RTX A2000, A4000 AMD W5500, W5700	Avid Artist DNxIO Avid Artist DNxIQ Avid Artist DNxIV Avid Artist DNxID Avid Artist DNxIP
HP Z4R 3.0 Ghz or higher 6 to 18 core XEON 1U Rack system	Nvidia P1000, P2200, RTX 4000, 5000, 6000	Avid Artist DNxIO Avid Artist DNxIQ Avid Artist DNxIV Avid Artist DNxID Avid Artist DNxIP
HP Z2 G5 2.8 Ghz or higher 6, 8, or 10 core i7/i9/Xeon Tower or SFF 16 to 128 GB DDR4-2933 memory	Nvidia P620, P1000, P2200, RTX 4000 AMD W5500, W5700	Avid Artist DNxIO Avid Artist DNxIQ Avid Artist DNxIV Avid Artist DNxID Avid Artist DNxIP
HP Z2 G5 Mini 3.0 Ghz or higher 6, 8, or 10 core i7/i9/Xeon 16 to 64 GB DDR4-2933 Memory.	Nvidia P620, T1000, T2000	Avid Artist DNxIO Avid Artist DNxIQ Avid Artist DNxIV Avid Artist DNxID Avid Artist DNxIP
Dell 3640 2.8 Ghz or higher 6, 8 or 10 core i7/i9/Xeon Tower 16 to 128 GB DDR4-2933 memory	Nvidia P620, P1000, P2200, RTX 4000 AMD W5500, W5700	Avid Artist DNxIO Avid Artist DNxIQ Avid Artist DNxIV Avid Artist DNxID Avid Artist DNxIP
Dell 3440 2.8 Ghz or higher 6, 8 or 10 core i7/i9/Xeon SFF 16 to 128 GB DDR4-2933 memory	Nvidia P620 P1000	Avid Artist DNxIO Avid Artist DNxIQ Avid Artist DNxIV Avid Artist DNxID Avid Artist DNxIP
Lenovo P340 2.8 Ghz or higher 6, 8 or 10 core i7/i9/Xeon Tower or SFF 16 to 128 GB DDR4-2933 memory	Nvidia P620 P1000 P2200, RTX 4000	Avid Artist DNxIO Avid Artist DNxIQ Avid Artist DNxIV Avid Artist DNxID Avid Artist DNxIP

Qualified PC Hardware	Graphics Card	Supported with
Lenovo P340 Tiny 2.8 Ghz 6 or 8 core i7/i9 16 to 64 GB DDR4-2933 memory	Nvidia P620 P1000	Avid Artist DNxIO Avid Artist DNxIQ Avid Artist DNxIV Avid Artist DNxID Avid Artist DNxIP
Lenovo P620 12-64 core 2.7 Ghz or higher AMD Threadripper Pro 32 to 256 GB DDR4-3200 Memory	Nvidia RTX 4000, 5000, 6000 AMD W5500, W5700	Avid Artist DNxIO Avid Artist DNxIQ Avid Artist DNxIV Avid Artist DNxID Avid Artist DNxIP
Boxx ApexxT4 32 core 3.7 Ghz or 64 core 2.9 Ghz AMD Threadripper 32 to 256 GB DDR4-3200 Memory Thunderbolt 3 option	Nvidia RTX 5000 AMD W5700 AMD Pro VII	Avid Artist DNxIO Avid Artist DNxIQ Avid Artist DNxIV Avid Artist DNxID Avid Artist DNxIP
HP Z2 G4 3.0 Ghz or higher six core i7/Xeon E3 Tower or SFF 16 to 64 GB DDR4-2666 memory	Nvidia P620, P1000, P2000 AMD WX7100	Avid Artist DNxIO Avid Artist DNxIQ Avid Artist DNxIV Avid Artist DNxID Avid Artist DNxIP
Dell 3630 3.0 Ghz or higher six core i7/Xeon E3 Tower 16 to 64 GB DDR4-2666 memory	Nvidia P1000, P2000 AMD WX7100	Avid Artist DNxIO Avid Artist DNxIQ Avid Artist DNxIV Avid Artist DNxID Avid Artist DNxIP
Dell 3430 3.0 Ghz or higher 6-8 core i7/Xeon E3 SFF 16 to 64 GB DDR4-2666 memory	Nvidia P620, P1000 AMD WX4100	Avid Artist DNxIO Avid Artist DNxIQ Avid Artist DNxIV Avid Artist DNxID Avid Artist DNxIP
Dell 3930 3.0 Ghz or higher six core i7/Xeon E3 1U Rack 16 to 64 GB DDR4-2666 memory	Nvidia P1000, P2000, P2200 AMD WX7100	Avid Artist DNxIO Avid Artist DNxIQ Avid Artist DNxIV Avid Artist DNxID Avid Artist DNxIP

Qualified PC Hardware	Graphics Card	Supported with
Lenovo P330 3.0 Ghz or higher 6 or 8 core i7/Xeon E3 Tower or SFF 16 to 64 GB DDR4-2666 memory	Nvidia P600 P1000 P2000	Avid Artist DNxIO Avid Artist DNxIQ Avid Artist DNxIV Avid Artist DNxID Avid Artist DNxIP
Lenovo P330 Tiny 2.4Ghz 6-8 core i7/i9 16 to 64 GB DDR4-2666 memory	Nvidia P600, P620, P1000	Avid Artist DNxIO Avid Artist DNxIQ Avid Artist DNxIV Avid Artist DNxID Avid Artist DNxIP
HP Z2 G4 Mini 3.0 Ghz or higher six core i7/Xeon E3 16 to 32 GB 2666Mhz DDR4 Memory. Performance model only Thunderbolt option.	Nvidia P600, P1000 AMD WX7100	Avid Artist DNxIO Avid Artist DNxIQ Avid Artist DNxIV Avid Artist DNxID Avid Artist DNxIP
HP Z8 G4 Dual [8 - 24 core 2.1 Ghz or higher] scalable 64-128 GB DDR4-2666 memory, Tower	Nvidia P4000, P5000, P6000, RTX4000 AMD WX7100, WX9100	Avid Artist DNxIO Avid Artist DNxIQ Avid Artist DNxIV Avid Artist DNxID Avid Artist DNxIP
HP Z6 G4 Dual [8 -24 core 2.1 Ghz or higher] Intel Scalable Processors 64 to 192 GB DDR4-2666 memory	Nvidia P2000, P4000, P5000, RTX 4000, 5000 AMDWX7100	Avid Artist DNxIO Avid Artist DNxIQ Avid Artist DNxIV Avid Artist DNxID Avid Artist DNxIP
HP Z4 G4 6 - 10 core or 18 core 2.3 Ghz or higher processor 32-128 GB DDR4-22xx memory	Nvidia P1000, P2200, P4000 RTX 4000 AMD WX7100	Avid Artist DNxIO Avid Artist DNxIQ Avid Artist DNxIV Avid Artist DNxID Avid Artist DNxIP
Dell 7920 Dual (8-24 core 2.1 GHz or higher) Intel Scalable Processors Tower 64 to 128 GB DDR4-2666 memory	Nvidia P4000 P5000 P6000 AMD WX7100	Avid Artist DNxIO Avid Artist DNxIQ Avid Artist DNxIV Avid Artist DNxID Avid Artist DNxIP

Qualified PC Hardware	Graphics Card	Supported with
Dell R7920 Dual (8-24 core 2.1 GHz or higher) Intel Scalable Processors Rack 64 to 128 GB DDR4-2666 memory Thunderbolt adapter not supported in Rack 7920	Nvidia P4000 P5000 P6000 AMD WX7100	Avid Artist DNxIO Avid Artist DNxIQ Avid Artist DNxIV Avid Artist DNxID Avid Artist DNxIP
Dell 7820 Dual (8-24 core 2.1 GHz or higher) Intel Scalable Processors 64 to 128 GB DDR4-2666 memory	Nvidia P2000, P4000 P5000 RTX 4000, 5000 AMD WX7100	Avid Artist DNxIO Avid Artist DNxIQ Avid Artist DNxIV Avid Artist DNxID Avid Artist DNxIP
Dell 5820 6-18 core 2.3 Ghz or higher Intel Xeon W2-2xx Core i7/i9 32 to 128GB DDR4-2666 memory	Nvidia P1000, P2200, P4000 AMD WX5100, 7100	Avid Artist DNxIO Avid Artist DNxIQ Avid Artist DNxIV Avid Artist DNxID Avid Artist DNxIP
Lenovo P920 Dual [8 -28 core 2.1 Ghz or higher] Intel Scalable Processors 64 to 192 GB DDR4-2666 memory	Nvidia P4000 P5000, P6000	Avid Artist DNxIO Avid Artist DNxIQ Avid Artist DNxIV Avid Artist DNxID Avid Artist DNxIP
HP Z1 G3 All-in-one 3 3.4 Ghz or higher quad core i7/Xeon E3 16 to 64 GB DDR4-2133 memory	Nvidia M1000M, M2000M	
HP Z240 3.0 Ghz or higher quad core i7/Xeon E3 64 GB DDR4-2400 memory Tower or SFF	Nvidia P600, P100, P2000	Software Only
HP Z2 Mini 3.0 Ghz or higher quad core i7/Xeon E3 16 to 32 GB 2400Mhz DDR4 Memory, USB-C	Nvidia M620	Software Only
Dell 3620 3.0 Ghz or higher quad core i7/Xeon E3 16/32 GB DDR4-2400 memory Tower	Nvidia M2000, M4000 P600, P1000	Software Only
Dell 3420 3.0 Ghz or higher quad core i7/Xeon E3 16/32 GB DDR4-2400 memory SFF	Nvidia K620, K1200 P600, P1000	Software Only

Qualified PC Hardware	Graphics Card	Supported with
Dell 5720 AIO 3.3 Ghz or higher quad core i7/Xeon E3 3840x2160 - 16 to 64 GB 2400Mhz DDR4 Memory, thunderbolt 3/USB-C	AMD WX4150, WX7100	Avid Artist DNxIO Avid Artist DNxIQ Avid Artist DNxIV Avid Artist DNxID Avid Artist DNxIP
Lenovo P720 Dual [8 -28 core 2.1 Ghz or higher] Intel Scalable Processors 64 to 192 GB DDR4-2666 memory	NvidiaP2000, P4000 P5000 RTX 4000, 5000	Avid Artist DNxIO Avid Artist DNxIQ Avid Artist DNxIV Avid Artist DNxID Avid Artist DNxIP
Lenovo P520C 6, 8, 10 or 18core 2.3 Ghz or higher] Intel W-Processors 32 to 128 GB DDR4-2666 memory	Nvidia P1000, P2200 P4000 RTX 4000	Avid Artist DNxIO Avid Artist DNxIQ Avid Artist DNxID Avid Artist DNxIP
Lenovo P320 3.0 Ghz or higher quad core i7/Xeon E3 16/32 GB DDR4-2400 memory Tower or SFF	Nvidia P600, P1000, P2000(Tower)	Software Only
Lenovo P320 Tiny 2.9 GHz quad core i7-7700T	Nvidia P600	Software Only
HP Z840 Dual [8 - 16 core 2.1 Ghz or higher] Intel V4 32/64 GB DDR4 2400 memory	Nvidia P4000, P5000, P6000, M4000, M5000, M6000 AMD W7100, WX7100	Avid Artist DNxIO Avid Artist DNxIQ Avid Artist DNxIV Avid Artist DNxIP
HP Z640 Dual 10, 12, 16 core 2.1 Ghz or higher] Intel V4 32/64 GB DDR4-2400 memory	Nvidia P4000, P5000, P6000 M2000, M4000 M5000, M6000 AMDW5100, W7100, W8100	Avid Artist DNxIO Avid Artist DNxIQ Avid Artist DNxIV Avid Artist DNxIP
Dell 7910 Dual [8 - 16 core 2.1 Ghz or higher] Intel V4 32/64 GB DDR4-2400 memory	Nvidia M4000, M5000, M6000 AMD W7100, W8100	Avid Artist DNxIO Avid Artist DNxIQ Avid Artist DNxIV Avid Artist DNxIP

Qualified PC Hardware	Graphics Card	Supported with
Dell R7910 Dual [8 - 16 core 2.1 Ghz or higher] Intel V4 32/64 GB DDR4-2400 memory	Nvidia M4000, M5000, M6000 AMD W7100, W8100	Avid Artist DNxIO Avid Artist DNxIQ
Dell 7810 Dual [8-16 core 2.1 Ghz or higher] Intel V4 32/64 GB DDR4-2400 memory	Nvidia M2000, M4000, M5000 AMD W5100W, W7100, W8100	Avid Artist DNxIO Avid Artist DNxIQ Avid Artist DNxIV Avid Artist DNxIP
Dell 5810 [6 or 8 core 3.0 Ghz or higher] Intel V4 16/32/64 GB DDR4- 2400 memory	Nvidia M2000 AMD W5100	Avid Artist DNxIO Avid Artist DNxIQ Avid Artist DNxIV Avid Artist DNxIP
Lenovo P910 Dual [8 - 16 core 2.1 Ghz or higher] Intel V4 32/64 GB DDR4-2400 memory	Nvidia M4000, M5000, M6000	Avid Artist DNxIO Avid Artist DNxIQ Avid Artist DNxIV Avid Artist DNxIP
Lenovo P710 Dual [8 - 16 core 2.1 Ghz or higher] Intel V4 32/64 GB DDR4-2400 memory	Nvidia M2000, M4000, M5000	Avid Artist DNxIO Avid Artist DNxIQ Avid Artist DNxIV Avid Artist DNxIP
HP Z440 [4 or 8 core 3.0 Ghz or higher] Intel V4 16/32/64 GB DDR4- 2400 memory	Nvidia PK2200 AMD W5100	Avid Artist DNxIO Avid Artist DNxIQ Avid Artist DNxIV Avid Artist DNxIP
Lenovo P510 6 or 8 core 3.0 Ghz or higher Intel V4 16/32/64 GB DDR4- 2400 memory	Nvidia P2000, M2000, K2200	Avid Artist DNxIO Avid Artist DNxIQ Avid Artist DNxIV Avid Artist DNxIP
Lenovo P410 6 or 8 core 3.0 Ghz or higher Intel V4 16/32/64 GB DDR4- 2400 memory	Nvidia P2000, P1000 M2000, K1200	Avid Artist DNxIO Avid Artist DNxIQ Avid Artist DNxIV Avid Artist DNxIP
HP Z840 Dual 8, 10 or 12 core Intel V3 2.3 Ghz or higher Onboard NIC supported for ISIS 32 or 64 GB DDR4- 2133 memory	Nvidia K4200, K5200, M4000, M5000, M6000 AMD W7100, W8100	Avid Artist DNxIO Avid Artist DNxIQ Avid Artist DNxIV Avid Artist DNxIP

Qualified PC Hardware	Graphics Card	Supported with
HP Z640 Dual 8, 10 or 12 core Intel V3 2.3 Ghz or higher 32/64 GB DDR4-2133 Memory	Nvidia K2200, K4200, K5200, M4000, M5000 AMD, W5100, W7100, W8100	Avid Artist DNxIO Avid Artist DNxIQ Avid Artist DNxIV Avid Artist DNxIP
Dell R7910 Dual 8,10 or 12 Core Intel V3 2.3 Ghz or higher Onboard NIC supported for ISIS 32 or 64 GB DDR4- 2133 memory	Nvidia K4200, K5200, M4000, M5000, M6000 AMD W7100, W8100	Avid Artist DNxIO Avid Artist DNxIQ Avid Artist DNxIV Avid Artist DNxIP
Dell 7910 Dual 8, 10 or 12 core Intel V3 2.3 Ghz or higher - Onboard NIC supported for ISIS 32 or 64 GB DDR4- 2133 memory	Nvidia K4200, K5200, M4000, M5000, M6000 AMD W7100, W8100	Avid Artist DNxIO Avid Artist DNxIQ Avid Artist DNxIV Avid Artist DNxIP
Dell 7810 Dual 8, 10 or 12 core Intel V3 2.3 Ghz or higher - Onboard NIC supported for ISIS 32 or 64 GB DDR4- 2133 memory	Nvidia K2200, K4200, K5200, M4000, M5000 AMD W5100, W7100, W8100	Avid Artist DNxIO Avid Artist DNxIQ Avid Artist DNxIV Avid Artist DNxIP
Lenovo P900 Dual 8, 10 or 12 core Intel V3 2.3 Ghz or higher - Onboard NIC supported for ISIS 32 or 64 GB DDR4- 2133 memory	Nvidia K4200, K5200, M4000, M5000, M6000	Avid Artist DNxIO Avid Artist DNxIQ Avid Artist DNxIV Avid Artist DNxIP
Lenovo P700 Dual 8, 10 or 12 core Intel V3 2.3 Ghz or higher - Onboard NIC supported for ISIS 32 or 64 GB DDR4- 2133 memory	Nvidia, K2200 K4200, K5200, M4000, M5000	Avid Artist DNxIO Avid Artist DNxIQ Avid Artist DNxIV Avid Artist DNxIP
Lenovo P310 Tower and SFF (Small Form Factor) Quad Xeon E3- 1245V5 3.5 Ghz Onboard NIC supported for ISIS 16/32 GB DDR4- 2133 Memory	Nvidia K620, K1200 K2200	Software Only
Dell 3620 quad Xeon E3-1245V5 3.5 Ghz Onboard NIC supported for ISIS 16/32 GB DDR4- 2133 Memory	Nvidia K620, K2200	Software Only

Qualified PC Hardware	Graphics Card	Supported with
Dell 3420 SFF (Small Form Factor) Quad Xeon E3-1245V5 3.5 Ghz Onboard NIC supported for ISIS 16/32 GB DDR4- 2133 Memory	Nvidia K620, K1200	Software Only
Dell 5810 4-core or 8 core Intel V3 3.0 Ghz or higher Onboard NIC supported for ISIS 16 or 32 GB DDR4- 2133 memory	Nvidia K2200 AMD W5100	Avid Artist DNxIO Avid Artist DNxIQ Avid Artist DNxIV Avid Artist DNxIP
Lenovo P500 4-core or 8 core Intel V3 3.0 Ghz or higher Onboard NIC supported for ISIS 16 or 32 GB DDR4- 2133 memory	Nvidia K2200	Avid Artist DNxIO Avid Artist DNxIQ Avid Artist DNxIV Avid Artist DNxIP

Qualified PC Notebooks for Avid Media Composer

The following PC Notebooks are qualified with Avid Media Composer. The following applies to the editing system when running on a laptop:

Qualified PC Notebooks	Graphics Cards	Supported With
HP Zbook Firefly G8 14" or 15" 1.8Ghz or higher 4 core i7 Intel 11th Gen.	Nvidia T500 Intel Iris Xe	Avid Artist DNxIO Avid Artist DNxIQ Avid Artist DNxIV Avid Artist DNxIP
HP Zbook Fury G7 15" & 17" 2.4Ghz or higher 6 or 8 core i7/i9 Xeon 10th Gen	Nvidia T1000, T2000, RTX 3000, 4000, 5000 AMD W5500M	
HP Zbook Power G7 15" 2.4 Ghz or higher 6 or 8 core i7/i9/Xeon 10th Gen 16 to 64 GB DDR4-2933 Memory	Nvidia P620, T1000 T2000	Avid Artist DNxIO Avid Artist DNxIQ Avid Artist DNxIV Avid Artist DNxID Avid Artist DNxIP
HP Zbook Create G7 15" 2.4 Ghz or higher 6 or 8 core i7/i9 10th Gen 16 to 32 GB DDR4-2933 Memory HP Zbook Studio G7 15" 2.4 Ghz or higher 6 or 8 core i7/i9/Xeon 10th Gen	Nvidia GeForce RTX 2070, RTX 2070 Super RTX 2080 Super	Avid Artist DNxIO Avid Artist DNxIQ Avid Artist DNxIV Avid Artist DNxID Avid Artist DNxIP

Qualified PC Notebooks	Graphics Cards	Supported With
HP Zbook Studio G7 15" 2.4 Ghz or higher 6 or 8 core i7/i9/Xeon 10th Gen 16 to 64 GB DDR4-2933 Memory	Nvidia T1000 T2000 RTX 3000, 4000, 5000	Avid Artist DNxIO Avid Artist DNxIQ Avid Artist DNxIV Avid Artist DNxID Avid Artist DNxIP
HP Zbook Firefly 14" or 15" 1.6 Ghz or higher 4 or 6 core i7 10th Gen 16 to 64 GB DDR4-2666 Memory	Nvidia P520 Intel UHD	Avid Artist DNxIO Avid Artist DNxIQ Avid Artist DNxIV Avid Artist DNxID Avid Artist DNxIP
Lenovo P17 17" 2.4 Ghz or higher 6 or 8 core i7/i9/Xeon 10th gen 16 to 128 GB DDR4-2933 Memory	Nvidia T1000, T2000 RTX 3000, 4000, 5000	Avid Artist DNxIO Avid Artist DNxIQ Avid Artist DNxIV Avid Artist DNxID Avid Artist DNxIP
Lenovo P15 15" 2.4 Ghz or higher 6 or 8 core i7/i9/Xeon 10th gen 16 to 128 GB DDR4-2933 Memory	Nvidia T1000, T2000 RTX 3000, 4000, 5000	Avid Artist DNxIO Avid Artist DNxIQ Avid Artist DNxIV Avid Artist DNxID Avid Artist DNxIP
Lenovo P15v 15" 2.4 Ghz or higher 6 or 8 core i7/i9/Xeon 10th gen 16 to 64 GB DDR4-2933 Memory	Nvidia P620 Intel UHD	Avid Artist DNxIO Avid Artist DNxIQ Avid Artist DNxIV Avid Artist DNxID Avid Artist DNxIP
Lenovo P1 G3 15" 2.4 Ghz or higher 6 or 8 core i7/i9/Xeon 10th gen 16 to 64 GB DDR4-2933 Memory	Nvidia T1000, T2000	Avid Artist DNxIO Avid Artist DNxIQ Avid Artist DNxIV Avid Artist DNxID Avid Artist DNxIP
Dell 7750 17" 2.4 Ghz or higher 6 or 8 core i7/i9/Xeon 10th gen 16 to 128 GB DDR4-2933 Memory	Nvidia T1000, RTX 3000, 4000, 5000	Avid Artist DNxIO Avid Artist DNxIQ Avid Artist DNxIV Avid Artist DNxID Avid Artist DNxIP

Qualified PC Notebooks	Graphics Cards	Supported With
Dell 7550 15" 2.4 Ghz or higher 6 or 8 core i7/i9/Xeon 10th gen 16 to 128 GB DDR4-2933 Memory	Nvidia T1000, T2000 RTX 3000, 4000	Avid Artist DNxIO Avid Artist DNxIQ Avid Artist DNxIV Avid Artist DNxID Avid Artist DNxIP
Dell 5750 17" 2.4 Ghz or higher 6 or 8 core i7/i9/Xeon 10th gen 16 to 64 GB DDR4-2933 Memory	Nvidia T2000, RTX3000	Avid Artist DNxIO Avid Artist DNxIQ Avid Artist DNxIV Avid Artist DNxID Avid Artist DNxIP
Dell 5550 15" 2.4 Ghz or higher 6 or 8 core i7/i9/Xeon 10th gen 16 to 64 GB DDR4-2933 Memory	Nvidia T1000, T2000	Avid Artist DNxIO Avid Artist DNxIQ Avid Artist DNxIV Avid Artist DNxID Avid Artist DNxIP
Dell 3551 15" 2.4 Ghz or higher 6 or 8 core i7/i9 10th gen 16 to 64 GB DDR4-2933 Memory	Nvidia P620	Avid Artist DNxIO Avid Artist DNxIQ Avid Artist DNxIV Avid Artist DNxID Avid Artist DNxIP
HP Zbook 17 G6 2.3 Ghz or higher 6 or 8 core i7/i9/Xeon 16 to 128 GB DDR4-2667 Memory	Nvidia RTX 3000, 4000, 5000	Avid Artist DNxIO Avid Artist DNxIQ Avid Artist DNxIV Avid Artist DNxID Avid Artist DNxIP
HP Zbook 15 G6 2.3 Ghz or higher 6 or 8 core i7/i9/Xeon 16 to 128 GB DDR4-2667 Memory	Nvidia T1000 T2000 RTX3000	Avid Artist DNxIO Avid Artist DNxIQ Avid Artist DNxIV Avid Artist DNxID Avid Artist DNxIP
Lenovo P73 17" 2.6 Ghz or higher 6 or 8 core i7/i9/Xeon 16 to 128 GB DDR4-2667 Memory	Nvidia T2000, RTX 3000,4000,5000	Avid Artist DNxIO Avid Artist DNxIQ Avid Artist DNxIV Avid Artist DNxID Avid Artist DNxIP

Qualified PC Notebooks	Graphics Cards	Supported With
Lenovo P1 G2 15" 2.6 Ghz or higher 6 core i7 16 to 64 GB DDR4-2667 Memory	Nvidia T1000, T2000	Avid Artist DNxIO Avid Artist DNxIQ Avid Artist DNxIV Avid Artist DNxID Avid Artist DNxIP
Lenovo P53 15" 2.3 Ghz or higher 6 or 8 core i7/i9/Xeon 16 to 128 GB DDR4-2667 Memory	Nvidia T1000, T2000, RTX 3000, 4000	Avid Artist DNxIO Avid Artist DNxIQ Avid Artist DNxIV Avid Artist DNxID Avid Artist DNxIP
Dell 7740 17" 2.6 Ghz or higher 6 or 8 core i7/i9/Xeon 16 to 128 GB DDR4-2667 Memory	Nvidia RTX 3000, 4000, 5000 AMD WX7130	Avid Artist DNxIO Avid Artist DNxIQ Avid Artist DNxIV Avid Artist DNxID Avid Artist DNxIP
Dell 7540 15" 2.6 Ghz or higher 6 or 8 core i7/i9/Xeon 16 to 128 GB DDR4-2667 Memory	Nvidia T1000 T2000 RTX3000	Avid Artist DNxIO Avid Artist DNxIQ Avid Artist DNxIV Avid Artist DNxID Avid Artist DNxIP
Dell 5540 15" 2.3 Ghz or higher 6 or 8 core i7/i9/Xeon 16 to 64 GB DDR4-2667 Memory	Nvidia T1000, T2000	Avid Artist DNxIO Avid Artist DNxIQ Avid Artist DNxIV Avid Artist DNxID Avid Artist DNxIP
Dell 3541 15" 2.3 Ghz or higher 6 or 8 core i7/i9/Xeon 16 to 32 GB DDR4-2667 Memory	Nvidia P620	Avid Artist DNxIO Avid Artist DNxIQ Avid Artist DNxIV Avid Artist DNxID Avid Artist DNxIP
HP Zbook Studio G5 5 2.6 Ghz or higher six core i7/Xeon E3 Ultrabook 16 to 64GB 2667Mhz DDR4 Memory Dream Color option HP Thunderbolt dock G2	Nvidia P1000, P2000	Avid Artist DNxIO Avid Artist DNxIQ Avid Artist DNxIV Avid Artist DNxID Avid Artist DNxIP

Qualified PC Notebooks	Graphics Cards	Supported With
Dell 5530 15" 2.6Ghz or higher 6 core i7/Xeon E3 Thin and light 16 to 32 GB 2667Mhz DDR4 Memory USB 3.0 to Ethernet required for Avid NEXIS Connectivity	NvidiaP1000 P2000	Avid Artist DNxIO Avid Artist DNxIQ Avid Artist DNxIV Avid Artist DNxID Avid Artist DNxIP
Lenovo P1 15" 2.6 Ghz or higher six core i7/Xeon E3 Thin and Light 16 to 64 GB 2667Mhz DDR4 Memory	Nvidia P1000	Avid Artist DNxIO Avid Artist DNxIQ Avid Artist DNxIV Avid Artist DNxID Avid Artist DNxIP
HP Zbook 17" G5 2.6 Ghz or higher six core i7/Xeon E3 16 to 64 GB 2667Mhz DDR4 Memory	Nvidia P3200, P4200, P5200 AMD WX4170	Avid Artist DNxIO Avid Artist DNxIQ Avid Artist DNxIV Avid Artist DNxID Avid Artist DNxIP
Dell 7730 17" 2.6Ghz or higher 6 core i7/Xeon E3 16 to 64 GB 2667Mhz DDR4 Memory	NvidiaP3200 P4200 P5200 AMD WX4170	Avid Artist DNxIO Avid Artist DNxIQ Avid Artist DNxIV Avid Artist DNxID Avid Artist DNxIP
Lenovo P72 2.6 Ghz or higher six core i7/Xeon E3 16 to 64 GB 2667Mhz DDR4 Memory	Nvidia P3200, P4200, P5200	Avid Artist DNxIO Avid Artist DNxIQ Avid Artist DNxIV Avid Artist DNxID Avid Artist DNxIP
HP Zbook 15" G5 2.6 Ghz or higher six core i7/Xeon E3 16 to 64 GB 2667Mhz DDR4 Memory Dreamcolor option	Nvidia P1000, P2000 AMD WX4150	Avid Artist DNxIO Avid Artist DNxIQ Avid Artist DNxIV Avid Artist DNxID Avid Artist DNxIP
HP Zbook 15V G5 2.6 Ghz or higher six core i7/Xeon E3 HP Thunderbolt dock G2	Nvidia P600	Avid Artist DNxIO Avid Artist DNxIQ Avid Artist DNxIV Avid Artist DNxID Avid Artist DNxIP

Qualified PC Notebooks	Graphics Cards	Supported With
Dell 7530 15" 2.6Ghz or higher 6 core i7/Xeon E316 to 64 GB 2667Mhz DDR4 Memory	NvidiaP1000 P2000 AMD WX4150	Avid Artist DNxIO Avid Artist DNxIQ Avid Artist DNxIV Avid Artist DNxID Avid Artist DNxIP
Lenovo P52 2.6 Ghz or higher six core i7/Xeon E3 16 to 64 GB 2667Mhz DDR4 Memory	Nvidia P1000, P2000	Avid Artist DNxIO Avid Artist DNxIQ Avid Artist DNxIV Avid Artist DNxID Avid Artist DNxIP
HP Zbook 17" G4 2.8 Ghz or higher quad core i7/Xeon E3 HP Thunderbolt dock G2 16 to 64 GB DDR4-2400 Memory	Nvidia P3000 P4000 P5000 AMD WX4170	Avid Artist DNxIO Avid Artist DNxIQ Avid Artist DNxIV Avid Artist DNxID Avid Artist DNxIP
HP Zbook 15" G4 2.8 Ghz or higher quad core i7/Xeon E3 HP Thunderbolt dock G2 16 to 64 GB DDR4-2400 Memory	Nvidia M620 M1200 M2200 AMD WX4150	Avid Artist DNxIO Avid Artist DNxIQ Avid Artist DNxIV Avid Artist DNxID Avid Artist DNxIP
HP Zbook Studio Ultrabook G4 2.8 Ghz or higher quad core i7/Xeon E3 HP Thunderbolt dock G2 16 to 64 GB DDR4-2400 Memory	Nvidia M1200	Avid Artist DNxIO Avid Artist DNxIQ Avid Artist DNxIV Avid Artist DNxID Avid Artist DNxIP
Dell 7720 17" 2.6 Ghz or higher quad core i7/Xeon E3 1920x1080 or 3840x2160 - 16 to 64 GB DDR4-2400 Memory	Nvidia P3000, P4000, P5000 AMD Radeon WX4150, WX7100	Avid Artist DNxIO Avid Artist DNxIQ Avid Artist DNxIV Avid Artist DNxID Avid Artist DNxIP
Dell 7520 15" 2.6 Ghz or higher quad core i7/Xeon E3 1920x1080 or 3840x2160 - 16 to 64 GB 2400Mhz DDR4 Memory	Nvidia M1200, M2200 AMD Radeon WX4130, WX4150	Avid Artist DNxIO Avid Artist DNxIQ Avid Artist DNxIV Avid Artist DNxID Avid Artist DNxIP

Qualified PC Notebooks	Graphics Cards	Supported With
Dell 5520 15" 2.8 Ghz or higher quad core i7/Xeon E3 1920x1080 or 3840x2160 - 16 to 32 GB 2400Mhz DDR4 Memory	Nvidia M1200	Avid Artist DNxIO Avid Artist DNxIQ Avid Artist DNxIV Avid Artist DNxID Avid Artist DNxIP
Dell 3520 15" 2.8 Ghz or higher quad core i7/Xeon E3 1920x1080 - 16 to 32 GB 2400Mhz DDR4 Memory	Nvidia M620	Avid Artist DNxIO Avid Artist DNxIQ Avid Artist DNxIV Avid Artist DNxID Avid Artist DNxIP
Lenovo P51 2.6 Ghz or higher quad core i7/Xeon E3 16 to 64 GB 2400Mhz DDR4 Memory	Nvidia M1200, M2200	Avid Artist DNxIO Avid Artist DNxIQ Avid Artist DNxIV Avid Artist DNxID Avid Artist DNxIP
Lenovo P71 2.6 Ghz or higher quad core i7/Xeon E3 16 to 64 GB 2400Mhz DDR4 Memory	Nvidia P3000, P4000, P5000	Avid Artist DNxIO Avid Artist DNxIQ Avid Artist DNxIV Avid Artist DNxID Avid Artist DNxIP
HP Zbook 15" G3 2.6 Ghz or higher Quad core i7/Xeon E3 1920x1080 or 3840x2160- 16 to 64 GB 2133Mhz DDR4 Memory, thunderbolt 3	Nvidia M1000M, M2000M, M600M AMD, W5170M	Avid Artist DNxIO Avid Artist DNxIQ Avid Artist DNxIV Avid Artist DNxID Avid Artist DNxIP
HP Zbook 17" G3 2.7Ghz or higher quad core i7/Xeon E3	Nvidia M3000M, M4000M, M5000M AMD W7170M	Avid Artist DNxIO Avid Artist DNxIQ Avid Artist DNxIV Avid Artist DNxID Avid Artist DNxIP
Dell 7710 17" 2.7 Ghz quad core i7 or 2.9 Ghz Xeon E3 1920x1080 or 3840x2160 - 16/32 GB 2133Mhz DDR4L Memory	Nvidia M1000M, M2000M AMD W7170M	Avid Artist DNxIO Avid Artist DNxIQ Avid Artist DNxIV Avid Artist DNxID Avid Artist DNxIP

Qualified PC Notebooks	Graphics Cards	Supported With
Dell 7510 15" 2.5 Ghz and higher quad core i7 1920x1080 or 3200x1800 - 16/32 GB 2133Mhz DDR4L Memory	Nvidia M1000M, M2000M AMD W5170M	Avid Artist DNxIO Avid Artist DNxIQ Avid Artist DNxIV Avid Artist DNxID Avid Artist DNxIP
Dell 5510 15" 2.3 Ghz and higher quad core i7 1920x1080 or 3840x2160 - 8/16 GB 2133Mhz DDR4L Memory USB-C	Nvidia M1000M	Avid Artist DNxIO Avid Artist DNxIQ Avid Artist DNxIV Avid Artist DNxID Avid Artist DNxIP
Dell 3510 15" 2.3 Ghz and higher quad core i7 1920x1080 - 16 GB 2133Mhz DDR4L Memory	AMD W5130M	Avid Artist DNxIO Avid Artist DNxIQ Avid Artist DNxIV Avid Artist DNxID Avid Artist DNxIP
Lenovo P70 2.6 Ghz or higher quad core i7/Xeon E3 1920x1080 or 3840x2160 - 16 to 64 GB 2133Mhz DDR4, Memory, thunderbolt 3	Nvidia M3000M, M4000M, M5000M	Avid Artist DNxIO Avid Artist DNxIQ Avid Artist DNxIV Avid Artist DNxID
Lenovo P50 2.6 Ghz or higher quad core i7/Xeon E3 1920x1080 or 3840x2160 - 16 to 64 GB 2133Mhz DDR4 Memory, thunderbolt 3	Nvidia M1000M, M2000M	Avid Artist DNxIO Avid Artist DNxIQ Avid Artist DNxIV Avid Artist DNxID Avid Artist DNxIP

Qualified Macintosh Workstations for Avid Media Composer

The following Macintosh Workstations are qualified with the Avid Media Composer.



Avid Artist DNxIV requires a Thunderbolt 2 or 3 card. See [details here](#).

Qualified Macintosh Hardware	Graphics Cards	Supported With
iMac Retina 5K 27" 3.8 Ghz 8-core Intel i7 3.6 Ghz 10-core Intel i9 Aug 2020 16 to 128 GB 2666 Mhz DDR4	AMD Radeon Pro 5500XT, 5700, 5700XT	Avid Artist DNxIO Avid Artist DNxIQ Avid Artist DNxIV Avid Artist DNxID Avid Artist DNxIP

Qualified Macintosh Hardware	Graphics Cards	Supported With
<p>Mac Pro 2019 3.5 Ghz 8 core, 3.3 Ghz 12 core, 3.2 Ghz 16 core, 2.7 Ghz 24 core, 2.5 Ghz 28 core 48 to 192GB 2933Mhz DDR4 Memory</p> <p>Dual 10Gb Ethernet RJ45</p>	<p>AMD Radeon Pro 580X, W5700X, Pro Vega II</p>	<p>Avid Artist DNxIO Avid Artist DNxIQ Avid Artist DNxIV Avid Artist DNxID Avid Artist DNxIP</p>
<p>iMac Retina 5K 27" 3.6 GHz 8-core Intel i9 16 to 64GB 2666MHz DDR4</p> <p>March 2019</p>	<p>AMD Radeon Pro 575x, 580x, Vega 48</p>	<p>Avid Artist DNxIO Avid Artist DNxIQ Avid Artist DNxIV Avid Artist DNxID Avid Artist DNxIP</p>
<p>iMac Retina 4K 21.5" 3.2 GHz 6-core Intel i7 16 to 32 GB 2666 MH DDR4</p> <p>March 2019</p>	<p>AMD Radeon Pro 560x Vega 20</p>	<p>Avid Artist DNxIO Avid Artist DNxIQ Avid Artist DNxIV Avid Artist DNxID Avid Artist DNxIP</p>
<p>Mac mini 3.2 Ghz 6- core Intel i7 16 to 64 GB 2666 Mhz DDR4 Memory</p> <p>Late 2018</p>	<p>Intel UHD 630</p>	<p>Avid Artist DNxIO Avid Artist DNxIQ Avid Artist DNxIV Avid Artist DNxID Avid Artist DNxIP</p>
<p>iMac Pro 5K 27" 3.2 Ghz i7 8 core 3.0 Ghz i7 10 core 2.5 Ghz i7 14 core 2.3 Ghz i7 18 core</p> <p>Late 2017 - 32 to 128GB 2666 Mhz DDR4 NOTE: 10Gb Ethernet requires Avid NEXIS Pro client v2018.3.</p>	<p>Radeon Pro Vega 56, 64</p>	<p>Avid Artist DNxIO Avid Artist DNxIQ Avid Artist DNxIV Avid Artist DNxID Avid Artist DNxIP</p>
<p>iMac Retina 5K 27" 4.2 Ghz i7 Quad core Mid 2017 - 16 to 64 GB 2400 Mhz DDR4</p>	<p>Radeon Pro 570, 575, 580</p>	<p>Avid Artist DNxIO Avid Artist DNxIQ Avid Artist DNxIV Avid Artist DNxID Avid Artist DNxIP</p>
<p>iMac Retina 4K 21.5" 3.6 Ghz i7 Quad core Mid 2017 - 16 to 32 GB 2400Mhz DDR4</p>	<p>Radeon Pro 555, 560</p>	<p>Avid Artist DNxIO Avid Artist DNxIQ Avid Artist DNxIV Avid Artist DNxID Avid Artist DNxIP</p>

Qualified Macintosh Hardware	Graphics Cards	Supported With
iMac Retina 5K 27" 4.0 Ghz i7 Quad core Late 2015 - 16/32 GB 1867Mhz DDR3	Radeon M390, M395, M395X	Avid Artist DNxIO Avid Artist DNxIQ Avid Artist DNxIV Avid Artist DNxID Avid Artist DNxIP
iMac Retina 4K 21.5" 3.3 Ghz i7 Quad core Late 2015 - 16/32 GB 1867Mhz DDR3	Intel Iris Pro 6200	Avid Artist DNxIO Avid Artist DNxIQ Avid Artist DNxIV Avid Artist DNxIP
Mac Pro 3.5 Ghz 6-core, 3.0 Ghz 8-core, or 2.7 Ghz 12-core Ivy Bridge CPU Late 2013 16, 32 or 64 GB DDR3-1866Mhz ECCmemory (4 DIMMs required) Sonnet and Magma Thunderbolt 2 Expansion chassis supported	Dual AMD FirePro D300, D500, D700	Avid Artist DNxIO Avid Artist DNxIQ Avid Artist DNxIV Avid Artist DNxID Avid Artist DNxIP

Qualified Macintosh Notebooks for Media Composer

The following Macintosh notebooks are qualified with the current editing applications. The following applies to the editing system when running on a laptop.

- HD Capture on Macintosh notebooks is not supported
- Playback in full quality 10 bit mode is not supported

Qualified Macintosh Notebook	Graphics Cards	Supported With
MacBook Pro 13" May 2020 2.3 Ghz Intel i7 4-core 10th gen Intel 16 to 32 GB 3733Mhz LPDDR4X	Intel IRIS plus	Avid Artist DNxIO Avid Artist DNxIQ Avid Artist DNxIV Avid Artist DNxID Avid Artist DNxIP
MacBook Pro 16"2019 2.6 Ghz i7 6-core or 2.3, 2.4 Ghz i9 8-core Thunderbolt 3 16 to 64GB 2666Mhz DDR4 Memory Touch Bar not used by Media Composer	AMD Radeon Pro 5300M, 5500M	Avid Artist DNxIO Avid Artist DNxIQ Avid Artist DNxIV Avid Artist DNxID Avid Artist DNxIP

Qualified Macintosh Notebook	Graphics Cards	Supported With
MacBook Pro 13" 2.8 Ghz 4-core Intel core i7 - Mid 2019 16 GB 2133Mhz LPDDR3	Intel Iris Plus 655	Avid Artist DNxIO Avid Artist DNxIQ Avid Artist DNxIV Avid Artist DNxID Avid Artist DNxIP
MacBook Pro 15" 2.2 Ghz and higher i7/i9 six core Mid 2018 - Touch Bar & Thunderbolt 3 Touch Bar not used by Media Composer	UHD630 AMD Radeon Pro 555X, 560X	Avid Artist DNxIO Avid Artist DNxIQ Avid Artist DNxIV Avid Artist DNxID Avid Artist DNxIP
MacBook Pro 13" 2.7 Ghz quad core Intel core i7 Mid 2018 - Touch Bar & Thunderbolt 3 16 GB 2133Mhz LPDDR3 Memory Touch Bar not used by Media Composer	Intel Iris Plus 655	Avid Artist DNxIO Avid Artist DNxIQ Avid Artist DNxIV Avid Artist DNxID Avid Artist DNxIP
MacBook Pro 15" 2.8 Ghz and higher i7 quad core Mid 2017 - Touch Bar & Thunderbolt 3 16 GB 2133Mhz LPDDR3 Memory Touch Bar not used by Media Composer	HD630 AMD Radeon Pro 555, 560	Avid Artist DNxIO Avid Artist DNxIQ Avid Artist DNxIV Avid Artist DNxID Avid Artist DNxIP
MacBook Pro 15" 2.6 Ghz and higher i7 quad core Late 2016 - Touch Bar & Thunderbolt 3 16 GB 2133Mhz DDR4 Memory Touch Bar not used by Media Composer	HD530 AMD Radeon 450, 455, 460	Avid Artist DNxIO Avid Artist DNxIQ Avid Artist DNxIV Avid Artist DNxID Avid Artist DNxIP

Feature Performance

A number of features in this editing application are processor-intensive. As a result, you might experience problems if you are working on an older system. The following chart shows the hardware that Avid has successfully qualified when using these features. For a list of the qualified systems, see [Qualified Workstations and Laptops](#).

Feature	Description	Recommended System
16K projects	96GB RAM minimum	48 Core Intel CPU systems with Nvidia RTX graphics
Editing High Resolution, High Frame Rate XAVC-I Media (UHD/4k in 59.94p) 4 streams of media and color adapters	64 GB RAM minimum, 96 GB recommended	HP Z8, Z6, Lenovo P920, P720, P620 systems Dell 7920, Dell 7820 <ul style="list-style-type: none"> • Dual gold 6254 3.1 Ghz turbo to 4.0 Ghz 18-core (72 with HT) • Dual Xeon Gold 6154 3.0 Ghz, turbo up to 3.7 Ghz 18-core (72 cores with Hyperthreading) • AMD WX-7100 • Nvidia RTX 5000, RTX 6000, AMD WX9100 Storage: 10Gb Ethernet Avid NEXIS
1080p/50 XAVC Long Baseband Capture	16 GB RAM minimum	Qualified PC Dual 6 Core or higher Qualified Mac Pro 6 core or higher, 12 core with Hyperthreading

Feature	Description	Recommended System
Editing High Resolution, High Frame Rate DNxHR Media (UHD/4k in 59.94p)	32GB Min, 64 GB recommended	<p>HP Z8, Z6, Lenovo P920, P720, P620 systems HP Z840 HP Z640/Z620 Dell 7920/7910 Dell 7820/7810 Lenovo P910/P900/ Lenovo P710/P700</p> <ul style="list-style-type: none"> • NVIDIA RTX 5000, 6000, AMD WX9100 • NVIDIA P5000, M5000 or K5200 and AMD WX-7100 PCIe Gen3 Gfx card (recommended) <p>Mac Pro</p> <ul style="list-style-type: none"> • 12 core (24 with Hyperthreading) 3 GHz • Dual AMD FirePro 500/700 Graphics card <p>Storage: 10Gb Ethernet Avid NEXIS</p>
Editing High Resolution Media (Higher than 2K+)	16 GB RAM minimum	<p>Qualified PC Dual 6 Core or higher Qualified Mac Pro 6 core or higher, 12 core with Hyperthreading</p>
DMF and Background Transcode, Background Render	32 GB RAM recommended	<p>Qualified PC Dual 6 Core or higher Qualified Mac Pro 6 core or higher, 12 core with Hyperthreading</p>
Media Composer Cloud	16 GB RAM minimum. 24 GB or higher recommended depending upon system model.	i7 Quad core or higher with Hyperthreading
J2K Capture		<p>Qualified PC Dual 6 Core or higher Qualified Mac Pro 6 core or higher, 12 core with Hyperthreading</p>

Feature	Description	Recommended System
XDCAM Long GOP 9-way MultiCam with high stream count sequences	Avid recommends 16 GB RAM	Qualified PC Dual 6 Core or higher Qualified Mac Pro 6 core or higher, 12 core with Hyperthreading Storage: 10Gb Ethernet ISIS
Stereoscopic 3D	For optimal performance with Stereoscopic 3D, use these higher performance systems. Avid recommends a minimum of 16GB RAM when using Stereoscopic 3D.	Qualified PC Dual 6 Core or higher Qualified Mac Pro 6 core or higher, 12 core with Hyperthreading
XDCAM HD50 Capture		Qualified systems
HD RGB 4444 Apple ProRes 4444 DNxHD 4444	HD RGB capture requires a high end workstation.	Qualified PC Dual 6 Core or higher Qualified Mac Pro 6 core or higher, 12 core with Hyperthreading Storage: 10Gb Ethernet ISIS
AMA (QuickTime)	AMA is a processor intensive operation. Lower end platforms may not offer optimum performance. Highly compressed codecs such as H.264 will exhibit minimal real-time performance.	Recommendation of qualified systems depends on your planned use of this feature. Heavy usage of highly compressed codecs requires the high end systems. (Dual 6 Core or Dual 8 Core systems)
AMA (RED)	AMA is a processor intensive operation. Older platforms may not offer optimum performance. you will get better performance with higher end workstations.	Qualified Xeon Workstations NOTE: RED plug-in uses the Graphics Processor. Better performance with high performance graphics cards.
AVCI-Intra Capture	AVC-Intra capture with software codecs is supported.	24 core and higher Windows systems only.

Feature	Description	Recommended System
AVCI-Intra	AVC-Intra(AVC-I) is a high quality, low bit-rate HD codec and is very CPU intensive.	<p>4-Way MultiCam Playback Dual Quad Core, Dual 6 Core or Dual 8 Core Systems</p> <p>Four Stream Playback: Dual Quad Core, Dual 6 Core or Dual 8 Core Systems</p> <p>AMA Workflows: Dual Quad, Dual 6 or Dual 8 core systems</p>

Avid Artist I/O Device Compatibility

The following table shows the minimum version Media Composer supported with the Avid Artist I/O devices.

You must download the appropriate Avid Artist software from your [Avid Master Account](#).

Device	Minimum supported version Media Composer
Avid Artist DNxIO	Media Composer v8.4.1 and higher
Avid Artist DNxIQ	Media Composerv8.8.3 and higher
Avid Artist DNxIV	Media Composer v8.10 and higher
Avid Artist DNxIP	Media Composer v2018.8
Avid Artist DNxID	Media Composer v2018.9

Compatibility Chart

The following table lists the NVIDIA® driver, QuickTime®, Windows Media™, shared storage, Sony® XDCAM™, Panasonic® P2, and Avid Artist Series versions that were qualified with the Avid editing applications. You can also refer to [Documentation and version matrix](#).

IMPORTANT: For information on third party support (for example, Sorenson, Boris, etc) see the third party's web site.

Item	Versions	Comments
QuickTime Support	v7.7.9 (Windows) v10.x, (v7.x legacy) (Macintosh)	Note: QuickTime v10X does not include QuickTime Pro options. Note: QuickTime is not supported with Windows 10.
Avid Interplay Support	See Knowledge Base article on compatibility.	IMPORTANT: The Avid Interplay components that get installed on the editing application must be updated to the Avid Interplay version that is released with the editing application. These include the Media Indexer, Interplay Access, Interplay Framework, Interplay Transfer Client and ProEncode Client. The Avid Interplay Server components can remain on the previous releases listed as supported. For details, see the “Avid Editing Application Compatibility with Interplay Releases” doc on the Knowledge Base.
NVIDIA Driver Support	v461.72	See “Setting up the NVIDIA Card” on page 44 . For setting up the driver for stereoscopic, see the NVIDIA setup info in the Stereoscopic 3D Workflow Guide.
Shared Storage Support	Avid NEXIS and Avid ISIS®.	See “Shared Storage Support” on page 45 .
Sony XDCAM driver	v2.13 (XDCAM Transfer for Macintosh) Windows FAM v2.3.2 and VFAM v5.0.2	The VFAM firmware version for PDW-U1 is 2.600. The PDW-U2 is 2.810. The driver can be downloaded from Sony's website http://esupport.sony.com/ .

Item	Versions	Comments
Panasonic P2 drive	(Macintosh) v3.1.7 (Windows) v2.24	There is currently no P2 writeback support for Macintosh clients.
Avid Artist Series (Euphonix)	EuControl software v3.4	See the User's Guide for information on Artist Series Color setup information.

Avid Editing Application Compatibility with Pro Tools

General Co-Installation Notes:

- Install Pro Tools first and then Media Composer.
- You must uninstall all older versions of Media Composer or Pro Tools before installing newer versions.
- Co-install does not support both applications launched simultaneously.
- When you uninstall Pro Tools, choose to uninstall just the application and not the audio drivers or the editing application no longer sees the devices. On a Macintosh Pro Tools 10 system, this is named the “Safe Uninstall.” On a Macintosh Pro Tools 11 system no uninstallation is required. On a Windows Pro Tools 10 or 11 system, you must select the first uninstall option - “Pro Tools Only” - which is not selected by default.
- If you run into any issues, uninstall both applications and reinstall Pro Tools first, and then reinstall your editing application.
- Media Composer v5.0 and later and Pro Tools v8.0.3 and later do not include support for the Original Mbox. If you want to use the Original Mbox, you should use Media Composer v4.x and Pro Tools v8.0.1 instead.
- If you want to install your Avid editing application on a system with the Pro Tools Avid Video Engine installed, you must use one of the following configurations:
 - Media Composer v5.5/NewsCutter v9.5 and later with Pro Tools v9.0 or later.
 - Media Composer v5.0.x/NewsCutter v9.0.x with Pro Tools v8.5 or earlier.

External Controllers

Your Avid editing application supports the following external fader controllers or mixers for automation gain and pan recording or as control surfaces:

- Digi 002 (Windows only)
- Command|8
- Avid Artist Control
- Avid Artist Mix
- Avid Artist Transport
- Avid Artist Color

External controllers or mixers are optional. They are not required for you to perform automation gain or pan recording on an Avid editing system.

The following table compares Avid external controllers and mixers.

Feature	Digi 002 (MC only)	Command 8	Avid Artist Control	Avid Artist Mix	Avid Artist Transport	Avid Artist Color
Control surface for transport controls and other functions	Yes	Yes	Yes	Yes (transport only, no soft keys)	Yes	
Provides audio play, input, and output	Yes	No	No	No	No	
Record automation gain	Yes	Yes	Yes	Yes	No	
Record automation pan	Yes	Yes	Yes	Yes	No	
Flying faders	Yes (8)	Yes (8)	Yes (4)	Yes (8)	No	
Touch-sensitive faders	Yes	Yes	Yes	Yes	No	
Touch-sensitive panners	No	No	Yes	Yes	No	

Feature	Digi 002 (MC only)	Command 8	Avid Artist Control	Avid Artist Mix	Avid Artist Transport	Avid Artist Color
Solo/mute	Yes	Yes	Yes	Yes	No	
Supports audio mixing	No ^a	No	No	No	No	
Latch mode (also known as Snap mode)	Yes	Yes	Yes	Yes	No	
Number of steps of fader accuracy	1024	1024	1024	1024	Not applicable	

- a. The Digi 002 can be used as a standalone audio mixer but not at the same time as it is being used as an automation gain or automation pan controller or control surface.

For more information on using these external fader controllers or mixers, see “Recording Automation Gain or Automation Pan Information” in the Help.

Setting up the NVIDIA Card

To set up the NVIDIA card, you must make sure you have the correct display driver version (install the display driver if necessary, and set the correct display settings. See the “[Compatibility Chart](#)” on page 41 for information on the supported driver(s).

Prior to setting up the NVIDIA card, check to make sure you have the correct display driver version. If you do not have the correct NVIDIA driver, you can install it from the Nvidia website - Nvidia.com.

To check the NVIDIA display driver version:

1. Right-click the Desktop and select NVIDIA Control Panel. You can also open the Windows Control Panel and double-click the NVIDIA Control Panel icon.
2. Click System Information at the bottom left corner of the NVIDIA Control Panel.

The version number is listed in the Graphics card information section on the ForceWare version line.

To install the NVIDIA display driver:

1. Download the applicable Nvidia driver from the Nvidia website - [Nvidia.com](https://www.nvidia.com).
2. Double-click the file for the applicable driver.
3. Follow the on-screen instructions, and then restart your system.

To setup multiple displays:

1. Right-click the Desktop, and select Nvidia Control Panel.
2. In the settings window in the left of the window, click Set up multiple displays.
3. Select or deselect the desired monitors listed.

To set the Driver for Avid Editing Environments

1. Right-click the Desktop, and select Nvidia Control Panel.
2. Select the Desktop menu selection in the Control Panel menu bar.
3. Enable Desktop > Video Editing Mode.
4. Click Manage 3D Settings.
5. Click the Global Setting tab.
6. Under Global presets, select Base Profile.
7. Scroll to locate the Power Management Mode. Select Prefer maximum performance.
8. Click Apply.

Reboot after installing the Nvidia software even if you are not prompted to do so. Never use the Windows “roll back driver” feature on the Nvidia driver. The driver version must match the rest of the components the Nvidia installer installs.

Shared Storage Support

For information on Shared Storage Support, see the Avid NEXIS and Avid ISIS tables in the following document:

http://resources.avid.com/SupportFiles/Attachments/MediaCentral_Compatibility_Matrix.pdf

Legal Notices

Product specifications are subject to change without notice and do not represent a commitment on the part of Avid Technology, Inc.

This product is subject to the terms and conditions of a software license agreement provided with the software. The product may only be used in accordance with the license agreement.

This product may be protected by one or more U.S. and non-U.S. patents. Details are available at www.avid.com/patents.

No part of this document may be reproduced or transmitted in any form or by any means, electronic or mechanical, including photocopying and recording, for any purpose without the express written permission of Avid Technology, Inc.

Copyright © 2021 Avid Technology, Inc. and its licensors. All rights reserved.

Portions © Copyright 2003-2007 of MOG Solutions.

Attn. Government User(s). Restricted Rights Legend

U.S. GOVERNMENT RESTRICTED RIGHTS. This Software and its documentation are "commercial computer software" or "commercial computer software documentation." In the event that such Software or documentation is acquired by or on behalf of a unit or agency of the U.S. Government, all rights with respect to this Software and documentation are subject to the terms of the License Agreement, pursuant to FAR §12.212(a) and/or DFARS §227.7202-1(a), as applicable.

Trademarks

Avid, the Avid Logo, Avid Everywhere, Avid DNXHD, Avid DNXHR, Avid Nexis, AirSpeed, Eleven, EUCON, Interplay, iNEWS, ISIS, Mbox, MediaCentral, Media Composer, NewsCutter, Pro Tools, ProSet and RealSet, Maestro, PlayMaker, Sibelius, Symphony, and all related product names and logos, are registered or unregistered trademarks of Avid Technology, Inc. in the United States and/or other countries. The Interplay name is used with the permission of the Interplay Entertainment Corp. which bears no responsibility for Avid products. All other trademarks are the property of their respective owners. For a full list of Avid trademarks, see: <http://www.avid.com/US/about-avid/legal-notices/trademarks>.

Adobe and Photoshop are either registered trademarks or trademarks of Adobe Systems Incorporated in the United States and/or other countries. Apple and Macintosh are trademarks of Apple Computer, Inc., registered in the U.S. and other countries. Windows is either a registered trademark or trademark of Microsoft Corporation in the United States and/or other countries. All other trademarks contained herein are the property of their respective owners.

Avid Media Composer ReadMe • Created 10/7/21