



# Avid ISIS

## ReadMe Version 4.6.1.1

---

---

<b>Date Revised</b>	<b>Release</b>	<b>Changes Made</b>
04/21/2014	v4.6.1.1	Updated to clarify that Windows Storage Server 2008 R2 is supported only with Avid ISIS v4.5 and higher.
04/09/2014	v4.6.1.1	Updated information for IPV/ILRE file for ISIS 7500 and ISIS 7000. See <a href="#">“New in Avid ISIS v4.6.1.1” on page 10.</a>
02/13/2014	v4.6.1	Added <a href="#">“New in Avid ISIS v4.6.1” on page 10,</a> merged Final Release support information for 4.6 and 4.6.1, corrections/additions to Supported ISIS Client Operating Systems table.
12/20/2013	v4.6	Updated to add <a href="#">“ISIS 5500   5000 Single Engine Configurations with Routed Clients” on page 57.</a>
12/10/2013	v4.6	Updated <a href="#">“New in Avid ISIS v4.6” on page 13.</a>

---

### **Metadata Location On the System Director**

This is an important reminder to move the metadata after doing an ISIS v4.x software upgrade. The upgrade instructions include moving the following files to a new location.

- Partition0
- Partition1
- PartitionDump.bin

**Old v2.x metadata location:** D:\Program Files\Avid Technology\AvidUnityISIS\System Directorx64

**New v4.x metadata location:** D:\Program Files\Avid\ISIS System Director

## Important Information

Avid recommends that you read all the information in this ReadMe file thoroughly before installing software or attempting to use the Avid ISIS system. This ReadMe provides information that is not in the other Avid ISIS documentation.

This is a common ReadMe used for the ISIS 7500 | 7000, ISIS 5500 | 5000 and ISIS 2000 infrastructures. Individual ReadMes no longer exist. New installations and upgrades run the same Autorun.exe file in the kit for installing the ISIS 7500 | 7000 System Director, ISIS 2000 System Director, and ISIS 5500 | 5000 System Director or Engine, ISIS File Gateway, and Windows client software. The installer automatically detects any previously installed software and defaults to the appropriate software update.

References to ISIS 5500 in this documentation apply to both ISIS 5500 and ISIS 5000 with the exception of the following:

- ISIS 5500-64. There was not an ISIS 5000-64.
- ISIS 5500-16 has an installed 10 Gb Myricom board. In the ISIS 5000-16, the Myricom board was not installed with a shipping system. The Myricom board was an optional board in the ISIS 5000-16.



*Search the Avid Knowledge Base for the most up-to-date ReadMe file, which contains the latest information that might have become available after the documentation was published. To view the online version, visit the Knowledge Base at [www.avid.com/support](http://www.avid.com/support).*

This document provides hardware and software requirements, a hardware overview, and other important information. This document also lists limitations and known issues. Physical connection of the system and loading of the system and client software is explained in the appropriate *Avid ISIS Setup Guide*. You can access the documentation in the top-level AvidISISDocumentation folder on the Avid ISIS software installer kit.



**Avid recommends that you purchase installation services with your Avid ISIS system.**

# Contents

If You Need Help . . . . .	5
Accessing the Online Documentation . . . . .	5
Avid Training Services . . . . .	6
Product Terminology . . . . .	6
New in Avid ISIS v4.6.1.1 . . . . .	10
New in Avid ISIS v4.6.1. . . . .	10
New in Avid ISIS v4.6 . . . . .	13
Software Installation Instructions . . . . .	13
Hardware and Software Requirements . . . . .	36
Special Notes (ISIS 7500   7000, 5500   5000, and 2000) . . . . .	45
Avid ISIS 7500   7000 Special Notes . . . . .	49
Avid ISIS 5500   5000 Special Notes . . . . .	57
Avid ISIS 2000 Special Notes . . . . .	60
Known Issues . . . . .	63
Legal Notices . . . . .	73



## If You Need Help

If you are having trouble using your Avid product:

1. Retry the action, carefully following the instructions given for that task in this guide. It is especially important to check each step of your workflow.
2. Check the latest information that might have become available after the documentation was published.

New information is provided in the ReadMe file supplied on your Avid software kit as a PDF document and is also available online.

**You should always check online for the most up-to-date release notes or ReadMe because the online version is updated whenever new information becomes available.** To view the online versions, visit the Knowledge Base at [http://avid.force.com/pkb/articles/en\\_US/download/Avid-Shared-Storage-Patch-Updates](http://avid.force.com/pkb/articles/en_US/download/Avid-Shared-Storage-Patch-Updates).

3. Check the documentation that came with your Avid application or your hardware for maintenance or hardware-related issues.
4. Visit the online Knowledge Base at [www.avid.com/US/support](http://www.avid.com/US/support). Online services are available 24 hours per day, 7 days per week. Search this online Knowledge Base to find answers, to view error messages, to access troubleshooting tips, to download updates, and to read or join online message-board discussions.

## Accessing the Online Documentation

The Avid ISIS documentation is accessible in PDF format from the Help menu in the Avid ISIS Management Console browser window as well as on the top-level AvidISISDocumentation folder on the Avid ISIS software installer kit.



*The documentation describes the features and hardware of all models. Therefore, your system might not contain certain features and hardware that are covered in the documentation.*

**To access the online documentation from the installer kit:**

1. Load the Avid ISIS software installer kit onto your computer.
2. Navigate to the `[drive]:\AvidISISDocumentation` folder, and double-click the PDF file for the document you want to view.

# Avid Training Services

Avid makes lifelong learning, career advancement, and personal development easy and convenient. Avid understands that the knowledge you need to differentiate yourself is always changing, and Avid continually updates course content and offers new training delivery methods that accommodate your pressured and competitive work environment.

For information on courses/schedules, training centers, certifications, courseware, and books, please visit [www.avid.com/support](http://www.avid.com/support) and follow the Training links, or call Avid Sales at 800-949-AVID (800-949-2843).

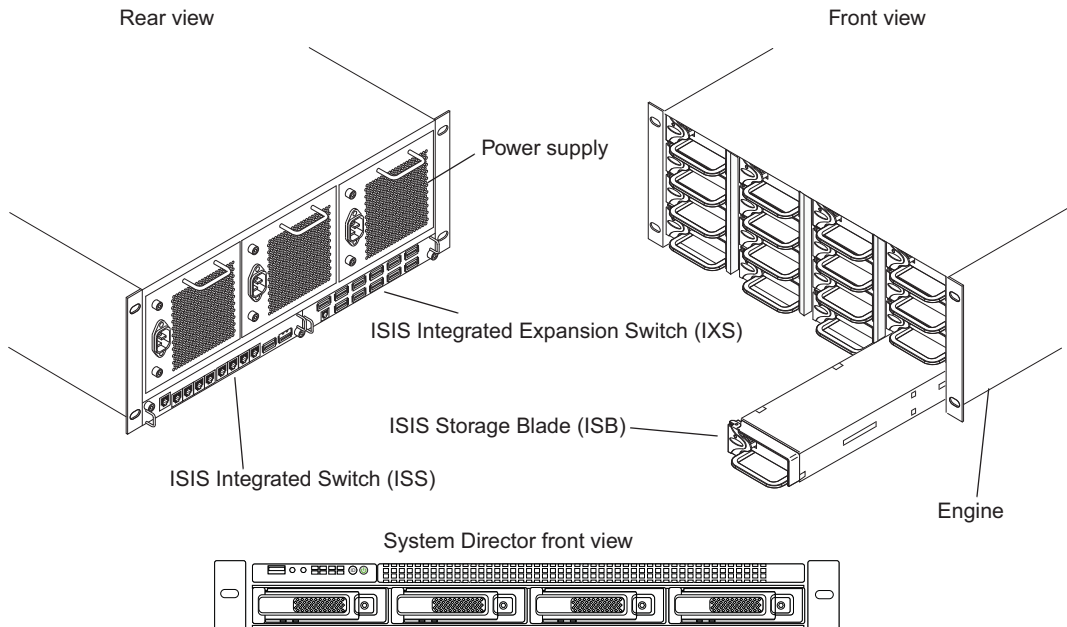
## Product Terminology

The following three sections give new users a brief description of ISIS component names.

### ISIS 7500 | 7000 Terminology

The major components used to create the Avid ISIS 7500 | 7000 shared storage network are: a System Director, an engine containing ISIS Integrated Switch (ISS), ISIS Integrated Expansion Switch (IXS), ISIS Storage Blade (ISB), and one or more clients.

#### Avid ISIS 7500 | 7000 Shared Storage Network Hardware



If you are unfamiliar with the names of the Avid ISIS 7500 | 7000 components, the following table provides the terms used in this and other Avid ISIS 7500 | 7000 documents.

---

## Product Nomenclature

Product name	Term used and description
Avid ISIS storage blade (labeled i500, i1000, i2000, i4000, i8000)	<p>ISIS Storage Blade (ISB)</p> <p>This hot swappable sled is accessible from the front of the ISIS engine and contains two SATA drives.</p>
Avid ISIS Integrated Ethernet switch blade	<p>ISIS Integrated Switch (ISS)</p> <p>This hot swappable switch is accessible from the rear of the ISIS engine and connects 1 Gb and 10 Gb clients. The ISS2000 indicates second generation hardware; first generation hardware is labeled ISS1000.</p>
Avid ISIS Integrated Expansion Ethernet switch blade	<p>ISIS Expansion Switch (IXS)</p> <p>This hot swappable switch is accessible from the rear of the ISIS engine is used to stack multiple ISIS Engines. The IXS switches are only found in configurations with three or more Engines. The IXS2000 indicates second generation hardware; first generation hardware is labeled IXS1000.</p>
Integrated power supply and cooling fans	<p>Power supplies</p> <p>Three hot swappable power supplies are accessible from the rear of the ISIS engine. Two power supplies are required to power the ISIS Engines.</p>
Avid ISIS engine	<p>Sometimes called Chassis in the Management Console interface</p> <p>Contains the ISBs, ISSs, IXSs, power supplies, and an internal midplane.</p>
Avid ISIS System Director (Active and standby)	<p>System Director: a server connected to the ISIS engine to manage the file system and portions of the metadata</p>
Avid ISIS client	<p>Client, defined as a user's workstation or server with Avid ISIS client software installed that allows that system to mount workspaces</p>
Avid ISIS shared storage network	<p>System or shared network storage environment</p> <p>The Avid ISIS consist of the hardware, Avid software, and other hardware supplied by the customer, such as external Ethernet switches.</p>

---

**Product Nomenclature (Continued)**

Product name	Term used and description
Zone 1, Zone 2, Zone 3, and Zone 4 Configurations	These are Avid-defined client configurations that connect the client to the Avid ISIS system. A complete explanation can be found in the <i>Avid ISIS 7500 / 7000 Setup Guide</i> .

---

## ISIS 5500 Terminology

A single Avid ISIS chassis provides System Director and Engine (Storage Server) functionality. Each Avid ISIS Engine is comprised of 16 media storage drives, two mirrored system drives, RAID controller, 10 Gigabit Ethernet interface, four 1 Gb Ethernet interfaces, plus redundant power supplies and fans.

Avid ISIS 5500 Engines are available in three configurations;

- ISIS 5500-16 — 16, 1 TB drives
- ISIS 5500-32 — 16, 2 TB drives
- ISIS 5500-64 — 16, 4 TB drives, includes 10 Gigabit Ethernet interface installed

Either configuration supports an optional four port 1 Gb Ethernet Network Interface Card (NIC), which can be added to provide up to eight 1 Gb Ethernet interfaces (four built in plus four port NIC on a single engine configuration). Up to six Engines are supported in the ISIS 5500, with 4 TB media storage drives can be combined to deliver 384 TB of shared storage. The first ISIS Engine provides System Director and Management Console functionality in addition to media storage.

Engine connections are summarized in the following list.

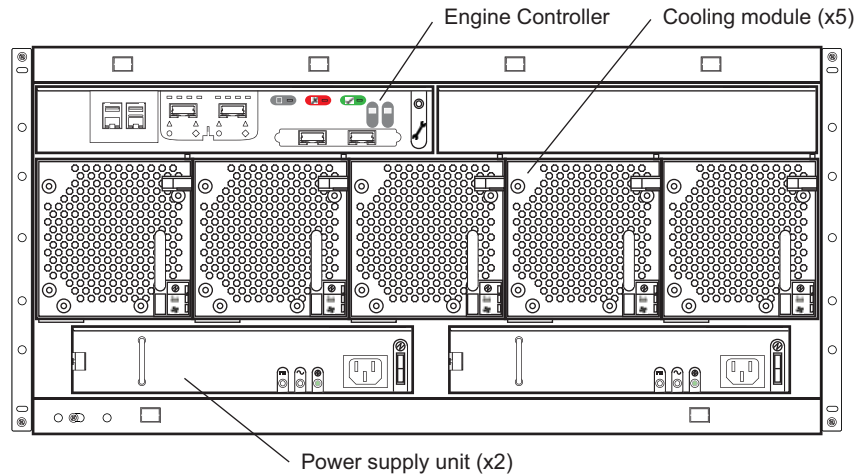
- **Direct Connect Clients** — Four or eight 1 Gb Ethernet clients and one 10 Gb client connect directly into the System Director. Each client must be on a separate subnet and use a common subnet mask.
- **Single Engine with 1 Gb Connection to the Switch** — If you are using the four 1 Gb Ethernet connections from the System Director to a switch, each 1 Gb port on the System Director uses an IP address on the same subnet and a common subnet mask.
- **Single Engine with 10 Gb Connection to the Switch** — If you are using the 10 Gb Ethernet connection from the System Director to a switch, the System Director uses one IP address.
- **Multi-Engine Connection to the Switch (10 Gb)** — If you are connecting multiple Engines, you must use the 10 Gb Ethernet connection from the Avid ISIS System Director and expansion engines to the switch. Each Engine uses one IP address.



## ISIS 2000 Terminology

An Avid ISIS 2000 uses an external AS3000 System Director similar to the ISIS 7500 | 7000 (see ISIS 7500 | 7000 Terminology). Although the ISIS 2000 System Director is similar to the ISIS 7500 | 7000 System Director, it is not the same System Director. Depending on your Avid ISIS 2000 Engine configuration, the Engine includes 82 or 42 media drives, an Engine controller with 10 Gb Ethernet connections, plus redundant power and cooling modules.

### Avid ISIS 2000 Engine



Up to five Engines with 3 TB media storage drives are supported in the ISIS 2000 environment providing 1.2 petabyte (PB) of raw storage (960 TB usable storage). Avid ISIS 2000 Engines are available in two configurations:

- ISIS 2000-240 — 82, 3 TB drives, providing 240 TB of raw storage which equates to 192 TB of usable storage
- ISIS 2000-120 — 42, 3 TB drives, providing 120 TB of raw storage which equates to 96 TB of usable storage

The ISIS 2000 System Director connects to an ISIS qualified switch using either a 1 Gb or 10 Gb connection. The ISIS 2000 Engine connects to that same switch using a 10 Gb connection. Both models of Avid ISIS 2000 Engines are populated with 3 terabyte (TB) SAS drives. These media drives are configured for redundant array of independent disks (RAID) 6 storage protection. Clients access any combination of ISIS online systems (ISIS 5500 and ISIS 7500 | 7000) and ISIS nearline systems (ISIS 2000) through external switch connections. The ISIS 2000 Management Console provides the same workspace and user functionality offered in all ISIS environments.

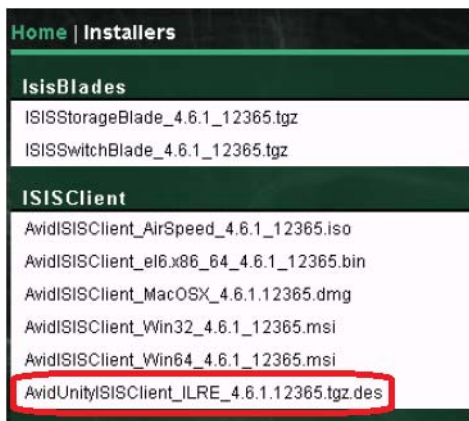
The ISIS 2000 nearline system workflows provides basic video playback of low bit rate media and high-speed file transfers to online ISIS systems.

## New in Avid ISIS v4.6.1.1

### Update to IPV/ILRE Client File for ISIS 7500 | 7000

The ISIS v4.6.1.1 software kit includes a corrected version of the IPV/ILRE 4.6.1 client file for ISIS 7500 and ISIS 7000 systems.

You can download the updated v4.6.1.1 kit from the patch download center: ([http://avid.force.com/pkb/articles/en\\_US/download/Avid-Shared-Storage-Patch-Updates](http://avid.force.com/pkb/articles/en_US/download/Avid-Shared-Storage-Patch-Updates)), then install the updated Client file from the Management Console Installers page, as shown below:



The updated client file is named AvidUnityISISClient\_ILRE\_4.6.1.12365.tgz.des.

## New in Avid ISIS v4.6.1

### Integrity Hardening

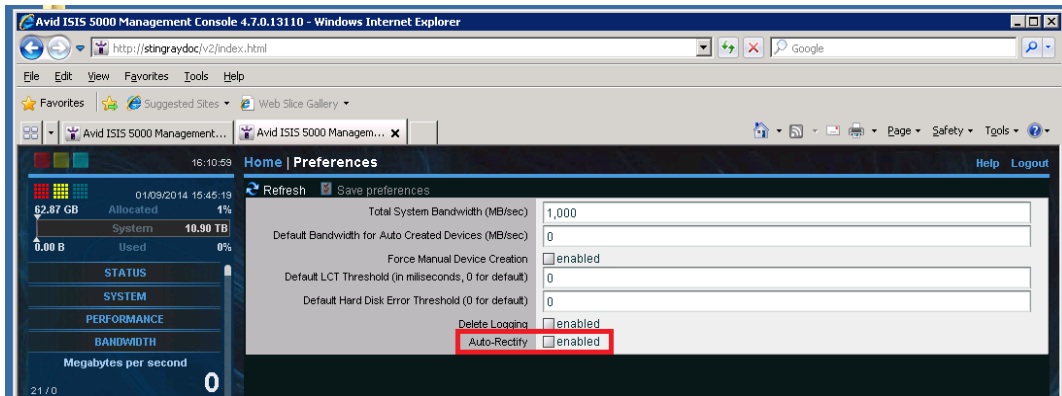
The ISIS v4.6.1 patch kit offers improvements in data protection when a Storage Manager cannot write to its peer and becomes unresponsive to the rest of the system.

## Auto-Rectify Option

The ISIS v4.6.1 patch kit includes a new option in the Management Console. You can now enable Auto-Rectify, which automatically reconciles the actual amount of used space and the reported amount of used space on a system.

To enable Auto-Rectify, click Preferences under the Advanced heading. Click the check box, and then click Save Preferences.

The following figure shows the location of the Auto-Rectify check box:



## Final Supported Release Stream for Some Avid Products

The v4.6.x release stream is the last to officially support the following products:

- AirSpeed Classic
- Final Cut Pro 7.x
- Media Composer 5.5.x and 6.0.x
- NewsCutter 9.5.x and 10.0.x
- Symphony 5.5.x and 6.0.x
- Windows Vista 32 and 64
- Windows XP (AirSpeed Multi Stream will still be supported)

## Fixed in This Release

The following issues were fixed in v4.6.1.

- If the scratch drive in Final Cut Pro was set to an ISIS Workspace and any video or audio effect was rendered, “error: not found” was displayed when the render completed. This was caused by a change in how the Finder Info is used for rendered media files between Final Cut Pro 6 and 7. ISIS now allows rendering to an ISIS workspace for both FCP 6 and FCP 7. Older FCP 6 projects may need to re-render effects if the rendered files reside in an ISIS workspace.
- Media write issue on the Mac client, seen when doing AS11 exports from Media Composer. The exported file had inconsistencies and AMA-linking displayed an error message saying the plug-in does not support the file.
- Issue on ISIS client installation of AirSpeed5000. Under some circumstances, the Performance Monitor database in the registry got corrupted, causing the installation of the ISIS Performance Monitor counters to fail.
- Removing an ISIS7000 blade and unbinding it before redistribution completed resulted in hung clients.
- Microsoft hotfix available for ISIS 5500 | 5000 systems. The v4.6.1 Autorun installer contains Microsoft hotfix KB2685007, which corrects an issue with ISIS 5500 | 5000 systems running Windows Storage Server R2. For details about the hotfix, see the following URL: <http://support.microsoft.com/kb/2685007/EN-US>.
- During board replacement, an ISB incorrectly advertised itself as an i500. Now the ISB displays a generic type until the metadata has been read and the actual ISB type is known to the system.
- Could not access all data on an ISIS 7500 | 7000 with one failed drive. In v4.6.1 and later, if the Storage Manager is bound, it is allowed to run with only the one good drive (in the active but disk failed state) so that data can be retrieved from it.
- Upgrading a half-populated ISIS 2000 fails to complete the file system metadata conversion. This occurs when upgrading from v4.2 to v4.5 or v4.6.
- ISIS client hang introduced in ISIS v4.6. The hang occurred on both Mac and Windows clients while doing consolidates, transcodes, and playback, especially variable speed playback. In v4.6, to clear the error you had to reboot the system. This issue has been fixed.
- Could not perform Send-To-Playback operation on a sequence containing media being ingested. Job was static for several minutes then failed with “Transfer Cancelled” error message. This issue was found in v4.6 and fixed in v4.6.1.

## New in Avid ISIS v4.6

The ISIS v4.6 software kit includes updates for the ISIS 7500 | 7000, ISIS 5500 | 5000, and ISIS 2000 System Directors, Engines, and clients. Once you update your infrastructure to ISIS v4.6, you cannot revert the infrastructure back to a previous release. Avid ISIS v4.6 Client Manager software is supported in the following infrastructures:

- ISIS 7500 | 7000 v4.0.1, v4.0.3, v4.0.4, v4.5 and v4.6
- ISIS 5500 | 5000 v4.0.1, v4.0.3, and v4.5, and v4.6
- ISIS 2000 v4.1, v4.2, v4.5 and v6

The following is a list of what's new in the Avid ISIS v4.6 release.

- This release supports the ISIS 7500 128TB Engine.
- Avid has added support for Windows v8.1 and Mac OSX v10.9.x



*If you are running Windows v8.1, a new driver is required for configurations running with an Intel 1Gb Network adapter. This driver v18.6 is included in the ISIS Installation Kit: \Drivers\ISIS Client. Note: Currently, the v18.6 driver has only been qualified with Windows v8.1.*

- The Login Dialog. The login dialog has changed to eliminate the need to manually type in the protocol and port. The application will automatically figure out the connection settings based on the host name and type of application.
- Storage Manager Log Viewer: The Storage Manager Log Viewer is now incorporated into the ISIS Toolbox application. It is no longer a standalone application. As part of the Toolbox, you no longer have to log in to every single blade to view the log. All the logs for the blades within the ISIS system can be managed from this one location.

## Software Installation Instructions

Avid ISIS 7500 | 7000 v4.6, ISIS 5500 | 5000 v4.6, and ISIS 2000 v4.6 infrastructure software requires Avid ISIS v4.6 and later Client Manager software. The following is a summarized version of the procedure. The *Avid ISIS Setup Guide* contains complete instructions for loading the software onto the system. You can access the documentation in the top-level AvidISISDocumentation folder on the Avid ISIS software installer kit.

- ISIS 7500 | 7000 Software Installation on New Systems
- ISIS 7500 | 7000 Upgrades
- Avid ISIS 5500 | 5000 Software Installation

- Avid ISIS 2000 Software Installation
- Avid ISIS Client Software Installation

The clients are defined as follows:

- Avid editing applications (see [“Avid ISIS Client Software Installation”](#) on page 33)
- Interplay Assist and Instinct
- Interplay Access
- Avid Approved Applications Initiative such as Pro Tools and Final Cut Pro

The infrastructure is defined as follows:

- ISIS 7500 | 7000 System Directors — System Director software and upgrade Storage Blades (ISBs) and Switch Blades (ISS/IXSs) in the Avid ISIS Engines to the latest firmware
- ISIS 5500 | 5000 Engines — System Director and additional Engines
- ISIS 2000 System Directors — System Director software and upgrade Storage Managers in the Avid ISIS Engines to the latest code
- Interplay servers — Interplay Engine, Interplay Media Indexer, Interplay Transfer, and CaptureManager
- Capture devices — AirSpeed 5000, AirSpeed Multi Stream, and AirSpeed

## Avid ISIS 7500 | 7000 Software Installation

To upgrade to this release, run the Autorun.exe installer to install Avid ISIS 7500 | 7000 software on the System Director and Upgrade Storage Blades (ISBs) and Switch Blades (ISS/IXSs) in the Avid engines. The Avid ISIS clients must be running ISIS v4.x.



*When installing the Avid ISIS 7500 | 7000 software, you no longer need to open the Windows Control Panel on the System Director to uninstall the earlier version of the Avid ISIS System Director software. All of the previous Avid ISIS software is automatically uninstalled when installing a newer version.*

## Component Requirements From Previous ISIS 7500 | 7000 Releases

The following is a list of items outside the ISIS software that you might need to update depending on the current version of your ISIS software. If you are on a version prior to 4.0, Avid recommends that you update your System Director Storage Blades (ISBs) and switches (ISS's and IXS's) to v4.2.x prior to updating to v4.6. If you are setting up a new ISIS system or updating an ISIS environment that is already at v4.0, continue with ISIS 7500 | 7000 Upgrades.

- If updating from ISIS v2.4 – v4.0 — update the ISIS 7000 System Director software before installing this release of ISIS 7000 software. See *Avid ISIS v4.0 ReadMe*.



*Remember to copy your metadata to the new v4.x location; see ISIS 7500 | 7000 Upgrades.*

- If updating from ISIS v2.0 – v2.0.6 to v2.4 — update the System Director Intel system BIOS on the 64-bit System Director (SR2500). See *Avid ISIS v2.2.2 ReadMe*.
- If updating from ISIS v2.0 – v2.0.6 to v2.4 — update the Intel RAID controller driver and registry key on the 64-bit System Director. See *Avid ISIS v2.2.2 ReadMe*.
- If updating from ISIS v2.0 – v2.0.3 to v2.4 — update the System Director to allow Windows Updates,. See *Avid ISIS v2.2.2 ReadMe*.
- If updating from ISIS v2.0 – v2.0.1 to v2.4 — update the System Director application key (dongle). See *Avid ISIS v2.2.2 ReadMe*.
- If updating from ISIS v1.4 – v2.0.1 to v2.4 — you must first upgrade to Avid ISIS v2.1.1 before upgrading to v2.4, For instructions. See *Avid ISIS v2.1.1 ReadMe*.

## ISIS 7500 | 7000 Software Installation on New Systems

Avid ISIS Systems ship with one blank 8GB USB Drive that is intended to be used for storing the ISIS Software Kit. Download the ISIS software kit from the download center ([www.avid.com/US/support/downloads](http://www.avid.com/US/support/downloads)) to your System Director using the software USB flash drive included with your Avid ISIS.

The *Avid ISIS 7500 | 7000 Setup Guide* contains complete instructions for loading the software onto the system. You can access the documentation in the top-level AvidISISDocumentation folder on the Avid ISIS software installer kit. The following is a summarized version of the procedure.



*In the past Avid has instructed you stop the Standby System director, upgrade the Standby, and restart the Standby. Once the Standby was running you were instructed to update the Active System Director.*

*Avid has revised the upgrade process to stop the Standby System Director and upgrade the Active System Director first, then upgrade the Standby System Director. This process avoids replicating metadata between ISIS software versions.*

**To install your ISIS 7500 | 7000 software on new systems:**

1. Log in to the Avid ISIS 7500 | 7000 System Director as Administrator (default password: `is-admin`).
2. Make a folder for the software kit on your root directory (C:\) of your Active System Director.
3. Insert the software USB flash drive into any USB port on your Active System Director.



*You can run the software installer from the USB flash drive. The advantage of copying the software kit to the Avid ISIS 7500 | 7000 is that you have easy access to kit files if you need them later.*

If the USB flash drive does not automatically display:

- a. Double-click the computer icon on the desktop.
  - b. Double-click the USB flash drive icon in the window and copy the software kit into the new folder you created on the Avid ISIS 7500 | 7000 system.
4. Double-click the Autorun.exe file in the root directory of software kit.

The installer detects the existing version of the installed software (if any) and displays the components that need to be upgraded in the splash screen.



*If the Package Selection menu does not allow you to select the software, click Quit and run Autorun.exe again.*

5. Select ISIS 7500 | 7000 System Director from the “Select Software Package” menu.

The File Gateway selection is used when loading the Avid File Gateway server. The File Gateway software cannot be installed on the same server as the System Director software.

6. Click Apply.
7. Follow the screen prompts accepting the defaults and License agreement.
8. Once the installation is complete, click Finish.
9. Open the Avid License Control tool, click Start > Programs > Avid > Utilities > Avid License Control and activate your Avid ISIS license. For detailed license activation instructions, see the *Avid ISIS 7500 | 7000 Setup Guide*.

You will need the System ID and Activation ID card included with your new System Director.

10. Run the Product Recovery tool to create a Product Recovery USB flash drive.



*For information on creating the Product Recovery USB flash drive, see the Avid ISIS 7500 | 7000 Setup Guide, Avid ISIS 2000 Setup Guide or Avid ISIS 5500 | 5000 Setup Guide. To open and use the ISIS Control Panel and Management Console see the Avid ISIS Administration Guide.*



11. Open the ISIS Control Panel.
  - a. Click Stop System Director.
  - b. Click Configure File System.
  - c. Select Create Active File System and click OK.
12. Open the Management Console.
 

Log in using the Administrator user name and leave the password field blank.

  - a. Load the ISBs and ISS/IXSs firmware. Using the ISIS Management Console > Engines page, select all the Engines and click Upgrade Blades and then select all your ISS/IXSs and click Upgrade Switches. ISB and ISS/IXS upgrades can run at the same time. For more information, see the *Avid ISIS 7000 Setup Guide*.
 

You can watch the upgrade progress in your Monitoring tool.
  - b. Bind the ISBs. Using the ISIS Management Console > Storage Managers page, select your ISIS Storage Mangers in the list and click Bind.
  - c. Create a Storage Group, Workspaces, and add Users in the Management Console.
13. Install your Avid ISIS client software. For information, see Avid ISIS Client Software Installation or the *Avid ISIS Client Guide*.

## ISIS 7500 | 7000 Upgrades

The following process summarizes the upgrade process to v4.6. Avid ISIS 7500 | 7000 v4.6 infrastructure software requires Avid ISIS v4.6 or later Client Manager software.



*If you have a 32-bit System Director, you must upgrade to a 64-bit System Director before loading your new ISIS v4.x software.*



*If you are upgrading from a version earlier than Avid ISIS v4.0, you must first perform the updates documented in “[Component Requirements From Previous ISIS 7500 | 7000 Releases](#)” on page 15 before upgrading to v4.6 and later.*

Review the following general comments on upgrading System Directors and the ISIS file system metadata:

- The preferred method of upgrading the file system metadata is using Partition0 and Partition1. These are copies of the in-memory file system and the most accurate accounting of the ISIS.
- The PartitionDump.bin file is a very different representation of what Avid believes to be the important parts of the file system that should persist. Do not be tempted to just import PartitionDump.bin, although this may be necessary if problems are seen with loading both

Partition0 and Partition1. Since only the active System Director writes out PartitionDump.bin any PartitionDump.bin on the standby is out of date. **Never use the PartitionDump.bin from the standby System Director in an upgrade.**

- Sometimes one of the Partition files fails to load but the other succeeds. This is considered a successful upgrade and is still the preferred method of upgrading.
- There have been cases of loading old PartitionDump.bin files and losing data. Always contact your support team before attempting to import PartitionDump.bin.
- There is a bug in ISIS versions 3.1 through 4.5 where the tie breakers are deleted when importing PartitionDump.bin. When importing PartitionDump.bin it is important to manually record the tie breakers before beginning the upgrade and restore them after the upgrade completes.

Depending on what version you are upgrading from or to there are different steps required. This guide contains common setup and finishing steps but different intermediate steps based on the upgrade. Read through once and identify your upgrade before beginning.

### Common Setup Steps

1. Download the ISIS v4.6 software kit from the Avid Download Center ([www.avid.com/US/support/downloads](http://www.avid.com/US/support/downloads)) to your System Director.
2. Create a new “test” workspace in a storage group. (You will use this later to verify that the upgrade completed successfully.)
3. Log into Administrator account on the Standby System Director and open the System Director Control Panel. Wait for the indication that metadata changes have been received and saved. Allow this to happen twice. Stop the Standby System Director using the System Director Control Panel.
4. Log into active System Director and do the following:
  - a. Open the System Director Log Viewer.
  - b. Stop the System Director using the System Director Control Panel.



**If there are any errors, stop and contact your support team.**

5. Check the modify date time of the files Partition0, Partition1 and PartitionDump.bin. The Date Modified times should be identical or up to a maximum of one minute different. **If the times differ by more than a minute, stop and contact your support team.** These times should also be very close to the current date and time. **If they are more than a few minutes old, stop and contact your support team.**

**To upgrade from v2.4 to v4.2.1 on the same hardware:**

1. Follow the steps in “Common Setup Steps” on page 18.
2. Load the ISIS v4.x software kit on the Active System Director.

3. Double-click Autorun.exe.



*If the Package Selection menu does not allow you to select the software, click [Quit](#) and run Autorun.exe again.*

4. When the installation completes, open the System Director Control Panel and stop the System Director.
5. Copy (not move) the following files from the v2.x folder to the v4.x folder:  
Partition0 and Partition1  
Old v2.x metadata location  
D:\Program Files\Avid Technology\AvidUnityISISSystemDirectorx64  
New v4.x metadata location  
D:\Program Files\Avid\ISIS System Director
6. Open the System Director Log viewer.
7. In the System Director Control Panel select “Start System Director.” If there are problems with the upgrade of the Partition file, stop and contact your support team.
8. When the reconfigure completes the active System Director will be up and running. Proceed to [“Completing the Upgrade” on page 21](#).

**To upgrade from 2.4 to v4.X and from an SR2400/SR2500 to an AS3000:**

1. Determine if you are moving from a 32-bit System Director:  
In this upgrade you must move the file system metadata files from the SR2400 or SR2500 to the AS3000, using either a network folder or memory stick. In v4.0, the folder where the System Director software resides was changed. You must copy the Partition files manually, which requires knowing whether the System Director is 32 bit or 64 bit. All SR2400 System Directors are 32 bit. Some SR2500 System Directors were configured as 32 bit; check yours to make sure. The following are the folder names and where they are located:
  - From v2.X metadata location for a 32 bit System Director
    - D:\Program Files\Avid Technology\AvidUnityISISSystemDirector
  - From v2.X metadata location for a 64 bit System Director
    - D:\Program Files\Avid Technology\AvidUnityISISSystemDirector64Bit
  - To v4.X metadata location
    - D:\Program Files\Avid\ISIS System Director (This folder is created on installation of the 4.x kit)
2. Follow the steps in [“Common Setup Steps” on page 18](#).

3. Copy the following files from the v2.x folder to the network folder or memory stick.
  - a. Partition0
  - b. Partition1
  - c. PartitionDump.bin
4. Load the ISIS v4.x software kit on the new AS3000 Active System Director.
  - a. Double click the Autorun.exe.
5. Once the install completes open the System Director Control Panel and stop the System Director.
6. Copy the following files from the network folder or memory stick to the v4.x folder:
  - a. Partition0
  - b. Partition1
7. Open the System Director Log viewer.
8. In the System Director, from the System Director Control Panel select Start System Director.  
**If there are problems with the upgrade of the Partition file, stop and contact your support team.**
9. Since the memory footprint for the System Director in v 4.6 is larger than before, on the AS3000 the System Director Control Panel shows a status of either “Reconfiguration possible” or “Reconfiguration required.” To reconfigure use the following steps:
  - a. Stop the System Director.
  - b. Select Configure File System.
  - c. In the File System Configuration dialog select Reconfigure File System. If there are problems with the upgrade of the Partition file, stop and contact your support team.
10. After the reconfigure completes the active System Director will be up and running. Proceed to [“Completing the Upgrade” on page 21.](#)

**To upgrade from a 4.x to a newer v4.X:**

1. Create a new folder on the D: drive and copy the following files to the new folder prior to installing the v4.x kit:
  - a. Partition0
  - b. Partition1
  - c. PartitionDump.bin (PartitionDump.bin is for use in case the normal Partition files fail to load)

2. Load the ISIS v4.x software kit on the Active System Director.
  - a. Double-click Autorun.exe.
3. After the kit install completes, open the System Director Log Viewer. **If there are problems upgrading the metadata, stop and contact your support team.**

### Completing the Upgrade

1. After the new Active System Director has started, log into the management console and make sure the “test” workspace exists on the Workspaces page. **If it does not, stop the System Director and contact your support team.**
2. Upgrade the Standby System Director. Make sure that there are no Partition files in the v4.x directory. If you are upgrading on the same system, move these files to a temporary folder and do the following:
  - a. Load the ISIS v4.x software kit on Standby System Director.
  - b. Double-click Autorun.exe in the software kit.
  - c. Open the System Director Log Viewer.
  - d. Open the System Director Control Panel and stop the System Director.
  - e. Select Configure File System.
  - f. In the File System Configuration dialog select Create Standby System Director. **If there are problems creating the new Standby, contact your support team.**
  - g. Once the new Standby System Director starts it will receive a complete copy of the metadata from the Active Director.
3. The first replication between the active and standby System Directors copies the entire heap over and can take several minutes. The active System Director Log Viewer might display the message: “Remote meta data save did not complete.” This is normal and does not indicate a problem with the upgrade. The System Director Control Panel on each system will indicate that the replication is in progress.
4. After the initial replication between the System Directors is complete you can close the System Director Log Viewer on both System Directors.

## Avid ISIS 5500 | 5000 Software Installation

Avid ISIS Systems ship with one blank 8GB USB Drive that is intended to be used for storing the ISIS Software Kit. Download the ISIS software kit from the download center ([www.avid.com/US/support/downloads](http://www.avid.com/US/support/downloads)) to your System Director using the software USB flash drive included with your Avid ISIS.



*When you initially install the Avid ISIS software, the RAID set is initialized automatically. With no client traffic on the system, this will take approximately 27 hours for the ISIS 5500-32 and 14 hours for the ISIS 5500-16. During this initialization, the system is functional and able to support a limited amount of client traffic. An Avid ISIS Engine during initialization should be able to support full bandwidth to one client. This allows sufficient bandwidth to test the system before the initialization is complete by working with one client at a time. During initialization, keep client bandwidth to a minimum. Failure to do so can significantly increase the initialization time.*

The following sections include general instructions for new installations and upgrades. Avid ISIS 5500 | 5000 v4.6 infrastructure software requires Avid ISIS v4.6 Client Manager software.



**Do not download and run the AvidISISStorageManager64.msi file shown in the Management Console Installer window to upgrade your Engines. Important configuration files are not included in the .msi file. The complete installation is only available in the ISIS installer splash screen.**

**To install your Avid ISIS 5500 | 5000 software on new systems:**

1. Load the new software kit (new version) on the System Director from the USB flash drive.
2. Double-click the Autorun.exe file in the software kit.



*If the Package Selection menu does not allow you to select the software, click Quit and run the Autorun.exe again.*

3. Select the appropriate installer from the Software Package menu (Engine/System Director or Engine only) for the enclosure you are installing on.
4. Click Apply.



*The installer automatically stops the System Director and Storage Manager services and uninstalls the earlier version of software.*



*Direct Connect configurations need at least one client connected before the Storage Manager recognizes a valid configuration. With no clients connected, the status is invalid and displays “Not Connected.” When you connect an operational client, all disk offline errors are cleared.*

5. On new installations a Network Configuration Tool appears asking you to provide the IP Address of the Ethernet connections.



*The Network Configuration Tool displays the supported 1 Gb ports or the 10 Gb port if it is being used.*



**You must use the Network Configuration Tool in the ISIS Launch Pad to set the Ethernet ports on the System Director. This tool sets the IP addresses in the registry. Manually setting the IP addresses on the System Director without using the Network Configuration Tool is not supported. You can set the Gateways for each network connection using Windows (outside of the Network Configuration Tool), but only in a routed environment.**

6. Once the software is installed, the System Director service starts up. Verify this in the System Director Control Panel.
7. Open the Avid License Control tool (click Start > Programs > Avid > Utilities > Avid License Control) and activate your Avid ISIS license. For detailed license activation instructions, see the *Avid ISIS 5500 Setup Guide*.  
Locate the System ID and Activation ID card included with your new System Director.
8. Repeat step 1 through 7 if installing software on additional Engines. Do not install the System Director software on the additional Engines unless planning a System Director Resiliency configuration, in which case, repeat step 1 through 7 (selecting Create Standby System Director in the File System Configuration dialog box) if you are setting up a Standby System Director. For detailed information, see the *Avid ISIS 5500 Setup Guide*.
9. Exit the software installer screen and restart the Engine to make sure the new or updated network drivers and configuration are applied.
10. (New installs) Run the Product Recovery tool to create a Product Recovery USB flash drive.
11. Click Control Panel from the ISIS Launch Pad.
  - a. Click Stop System Director.
  - b. Click Configure File System.
  - c. Select Create Active File System and click OK.
12. Click Management Console from the ISIS Launch Pad.
  - a. Log in using the Administrator user name and leave the password field blank.
  - b. Click the Storage Managers icon.
  - c. Select your ISIS Engines in the list and click Bind.
  - d. Create a Storage Group, Workspaces, and add Users in the Management Console.
13. (Option) If using a Force10 S25 switch, enable Flow Control on that switch. For instructions on turning on Flow Control in the Force10 S25 switch, see Turning on Flow Control in the Force10 S25 Switch.
14. Install your Avid ISIS client software. For information, see Avid ISIS Client Software Installation or the *Avid ISIS Client Guide*.

## ISIS 5500 | 5000 Upgrades

The following process summarizes the upgrade process to v4.6. For additional information, see the *Avid ISIS 5500 | 5000 Setup Guide*. Avid ISIS 5500 | 5000 v4.6 infrastructure software requires Avid ISIS v4.6 or later Client Manager software.



*The minimum supported version for this upgrade is v4.0. If you are on a build earlier than v4.0, update to v4.0.1, 4.0.3, or 4.0.4 before proceeding.*

### To upgrade ISIS 5500 | 5000:

1. Download the ISIS v4.6 software kit from the Avid Download Center ([www.avid.com/US/support/downloads](http://www.avid.com/US/support/downloads)) to your System Director.
2. When running a System Director Resiliency configuration, stop the Standby System Director using the ISIS Control Panel and upgrade the Active System Director first.  
Update additional Engines after your Active and Standby System Directors are updated.
3. Stop the Active System Director using the ISIS Control Panel.
4. Make a copy of your current metadata files. The following are the file names and where they are located:

Metadata location

D:\Program Files\Avid\ISIS System Director

- Partition0
- Partition1
- PartitionDump.bin

5. Load the new software kit (new version) on the System Director (or Engine) from the USB flash drive.
6. Double-click the Autorun.exe file in the software kit.

The installer detects the existing version of the installed software and displays the components that need to be upgraded in the splash screen.



*If the Package Selection menu does not allow you to select the software, click Quit and run the Autorun.exe again.*

7. Click Apply.



*The installer automatically stops the System Director and Storage Manager services and uninstalls the earlier version of software.*





*Direct Connect configurations need at least one client connected before the Storage Manager recognizes a valid configuration. With no clients connected, the status is invalid and displays “Not Connected.” As soon as you connect an operational client, all disk offline errors are cleared.*

8. Follow the screen prompts accepting the defaults and License agreement.
9. Once the installation is complete, click Finish.
10. (If applicable) Update your Standby System Director and other Engines repeating steps 1 through 9. Load the new software kit (new version) on the System Director (or Engine) from the USB flash drive. to Once the installation is complete, click Finish.
11. (ISIS v3.0 or v3.1 update) If you are upgrading from ISIS v3.0 or v3.1, check to see if you have any corrupted files, see [“Running the Node Analysis Tool” on page 28.](#)
12. Install your Avid ISIS client software. For information, see Avid ISIS Client Software Installation or the *Avid ISIS Client Guide*.

## Turning on Flow Control in the Force10 S25 Switch

The Avid default Force10 S25N and S25P (fiber) switch configurations do not have Flow Control turned on. Flow Control is needed to support ISIS 10 Gb clients, servers and Engines. Use the following procedure to turn on Flow Control in the Force10 switch.



*Avid is turning rx and tx on in the Force10 S25 switch, but the Force10 S60 and S4810 switches have rx on with tx off in the Avid default configuration.*

### To turn on Flow Control:

1. Log into the switch using Telnet or HyperTerminal.
2. Type **en**.
3. At the password prompt, type **avid**.
4. Type **conf**.
5. Type **Int range tengigabitethernet 0/25 - 28**.

In addition, depending on your Force10 S25 switch module options, enter one or more one of the following commands:

- ▶ Left 10 Gb module installed (numbered right to left, facing rear) **Int range tengigabitethernet 0/27 - 28**.
- ▶ Right 10 Gb module installed (numbered right to left, facing rear) **Int range tengigabitethernet 0/25 - 26**.
- ▶ Right stacking module installed (numbered right to left, facing rear) **Int range tengigabitethernet 1/25 - 26**.

6. Type `flowcontrol rx on tx on threshold 1024 1024 1054`.



*The following steps turn the port off and back on so the end node renegotiates. Make sure this isn't an interface from which you are gaining remote access because you will be disconnected.*

7. Type `shut`.
8. Type `no shut`.
9. Type `exit`.
10. Type `exit`.
11. Type `wr mem`.
12. Type `exit`.

**To confirm the setting change, look for the “Flowcontrol rx on tx on” entry:**

1. Type `en`.
2. At the password prompt, type `avid`.
3. Type `sho int tengigabitethernet 0/25` (port number depends on optional modules).

Information similar to the following is displayed. Verify **Flowcontrol rx on tx on** (shown below in bold) is included in the configuration:

```
TenGigabitEthernet 0/25 is up, line protocol is up
Hardware is Force10Eth, address is 00:01:e8:d6:84:7b
    Current address is 00:01:e8:d6:84:7b
Pluggable media present, XFP type is 10GBASE-SR
    Medium is MultiRate, Wavelength is 850.00nm
    XFP receive power reading is -4.0994dBm
Interface index is 40436228
Internet address is not set
MTU 1554 bytes, IP MTU 1500 bytes
LineSpeed 10000 Mbit
Flowcontrol rx on tx on
ARP type: ARPA, ARP Timeout 04:00:00
Last clearing of "show interface" counters 4w5d1h
Queueing strategy: fifo
Input Statistics:
    4372398864 packets, 5575634120385 bytes
    645279553 64-byte pkts, 15320069 over 64-byte pkts, 30588757 over
127-byte pkts
    7206136 over 255-byte pkts, 59117205 over 511-byte pkts, 3614887144
over 10 23-byte pkts
    693485 Multicasts, 34501 Broadcasts
    0 runts, 0 giants, 682022 throttles
    0 CRC, 0 overrun, 0 discarded
Output Statistics:
    8393098546 packets, 12349453356270 bytes, 0 underruns
    155227351 64-byte pkts, 26414194 over 64-byte pkts, 54970467 over
127-byte pkts
    47132113 over 255-byte pkts, 8010284 over 511-byte pkts, 8101344137
over 10 23-byte pkts
    151510 Multicasts, 283941 Broadcasts, 8392663095 Unicasts
    0 throttles, 0 discarded, 0 collisions
Rate info (interval 299 seconds):
```

```

Input 00.00 Mbits/sec,          0 packets/sec, 0.00% of line-rate
Output 00.00 Mbits/sec,        1 packets/sec, 0.00% of line-rate

```

## Running the Node Analysis Tool

If you are upgrading your Avid ISIS 5000 from v3.0 or v3.1, Avid recommends that you run the Node Analysis Tool immediately after upgrading to ISIS v3.2 or later. This tool analyzes the data drives for a spot on your drive that could have corrupted data when written to, using v3.0 or v3.1. This tool only needs to be run once. Whether or not files are identified, this issue does not exist when new data is written using ISIS v3.2 or later releases.



*This tool should be run immediately after upgrading from ISIS 5000 v3.0 or v3.1. If it is not, there is potential that some files returned by the NodeAnalysisTool as “suspect” may not have anything wrong with them. The NodeAnalysisTool returns a list of files located at the known bad locations, regardless of what version of ISIS was in place when the file was created. If a file was created after ISIS v3.2 was installed and it was written to the known bad location, it would still be reported by the NodeAnalysisTool. Only files located in the known bad location that were created prior to ISIS v3.2 would be corrupted.*

The extent of corrupted data is up to three files per Engine. If the corrupted file is a DNx220 video clip, the corrupted data is equivalent to about a single frame. You could play the video up to and after the corrupted frame without issue.

### To run the Node Analysis Tool:

1. Copy the `NodeAnalysisTool.exe` file to any Avid ISIS Windows client.

The Node Analysis Tool can be found on the Avid ISIS 5000 software kit in the `\AvidISISUtilities\` folder.

2. Double-click the `NodeAnalysisTool.exe` file.

A Command window opens.

3. When prompted for the “ISIS name,” type in the *virtual name* of your ISIS 5000 System Director and press **Enter**.

The default name is AvidISIS.

4. When prompted for the “Admin password,” type in the *Administrator password* used to log into your ISIS 5000 Management Console and press **Enter**.

The default password is blank (no password).

The tool runs and displays the following possible results:

- Wrong ISIS Name specified  
asStatus = “AS\_UNKNOWN\_SYSTEM\_ID” (42)
- Bad Password specified

```
asStatus = "AS_ACCESS_DENIED" (50)
```

- Unable to reach one or more Storage Managers in the system

```
asStatus = "AS_TIMEOUT" (65)
```

- No nodes found

```
asStatus = "AS_NO_MORE_ITEMS" (21)
```

```
Found 0 corrupt nodes on ISIS AvidISIS
```



*If messages appear similar to the following, you have a corrupted data block that could affect one of your saved files. Make a note of the file name.*

- If nodes are found, each Engine could have 3 messages, for example:

```
//AvidISIS/workspace1/temp/FSR_full_02740
```

```
//AvidISIS/workspace1/temp/FSR_full_02739
```

```
//AvidISIS/workspace1/temp/FSR_full_02741
```

```
//AvidISIS/workspace2/temp/FSR_full_02537
```

```
//AvidISIS/workspace2/temp/FSR_full_02612
```

```
//AvidISIS/workspace2/temp/FSR_full_02554
```

```
Found 6 corrupt nodes on ISIS AvidISIS
```



*These would only be corrupt if they were written prior to ISIS v3.2.*

5. Press **Enter** to quit the tool.

## Updating the 10 Gb Myricom Board Driver on Engines

The Avid ISIS v4.6 software release includes a driver update for the 10 Gb Myricom Ethernet adapter board installed in all Engines. The Myricom 10 Gb adapter board driver and settings are configured for you when you install the Avid ISIS software on the System Director and Engines. For more information see the *Avid ISIS Setup Guide*.



*If you have made a change to the Myricom settings and want to set them back to the Avid defaults, re-run the ISIS software installer (autorun.exe) and the Avid network settings are re-applied. If the network settings are not set to the Avid defaults, a message is displayed in the ISIS Management Console.*

## Avid ISIS 2000 Software Installation

Avid ISIS Systems ship with one blank 8GB USB Drive that is intended to be used for storing the ISIS Software Kit. Download the ISIS software kit from the download center ([www.avid.com/US/support/downloads](http://www.avid.com/US/support/downloads)) to the USB flash drive included with your Avid ISIS.

The *Avid ISIS 2000 Setup Guide* contains complete instructions for loading the software onto the system. You can access the documentation in the top-level AvidISISDocumentation folder on the Avid ISIS software installer kit. The following is a summarized version of the procedure.

### To install your ISIS 2000 software on new systems:

1. Log in to the Avid ISIS 2000 System Director as Administrator (default password: `is-admin`).
2. Make a folder for the software kit on your root directory (C:\) of your System Director.
3. Insert the software USB flash drive into any of USB ports on your System Director.



*You can run the software installer from the USB flash drive. The advantage of copying the software kit to the Avid ISIS 2000 is that you have easy access to kit files if you should ever them in the future.*

If the USB flash drive does not automatically display:

- a. Double-click the computer icon on the desktop.
- b. Double-click the USB flash drive icon in the window and copy the software kit into the new folder you created on the Avid ISIS 2000 system.
4. Double-click the Autorun.exe file in the root directory of software kit.

The installer detects the existing version of the installed software (if any) and displays the components that need to be upgraded in the splash screen.



*If the Package Selection menu does not allow you to select the software, click Quit and run the Autorun.exe again.*

5. Select ISIS 2000 System Director from the “Select Software Package” menu.
6. Click Apply.
7. Follow the screen prompts accepting the defaults and License agreement.



*When uninstalling or upgrading the ISIS 2000 software, you might get prompted to confirm the removal of the File Gateway software. Type Y to confirm the removal.*

8. Once the installation is complete, click Finish.
9. After the ISIS 2000 software is installed, you must restart the System Director.

10. Open the Avid License Control tool, click Start > Programs > Avid > Utilities > Avid License Control and activate your Avid ISIS license. For detailed license activation instructions, see the *Avid ISIS 2000 Setup Guide*.

You will need the System ID and Activation ID card included with your new System Director.

11. Open the ISIS Control Panel.



*To open and use the ISIS Control Panel and Management Console see the Avid ISIS Administration Guide.*

12. Click Stop System Director.
13. Click Configure File System.
14. Open the Management Console.  
Log in using the Administrator user name and the default password is blank.
15. Select Create Active File System and click OK.
16. Load the drive firmware. Using the ISIS Management Console > Storage Manager page, select all the Storage Managers and click Upgrade. For more information, see the *Avid ISIS 2000 Setup Guide*.
17. Bind the Storage Managers. Using the ISIS Management Console > Storage Manager page, select your ISIS Storage Managers in the list and click Bind.



*When setting up the System Director to the switch, you must use a static IP address. The ISIS 2000 System Director will not bind the Storage Manager if using DHCP.*

18. Create a Storage Group, Workspaces, and add Users in the Management Console.
19. Install your Avid ISIS client software. For information, see Avid ISIS Client Software Installation or the *Avid ISIS Client Guide*.

## ISIS 2000 Upgrades

The following process summarizes the upgrade process to v4.6. For additional information, see the *Avid ISIS 2000 Setup Guide*. Avid ISIS 2000 v4.6 infrastructure software requires Avid ISIS v4.6 or later Client Manager software.

### To upgrade ISIS 2000 v4.2 and earlier to v4.6:

1. Download the ISIS software kit from the Avid Download Center ([www.avid.com/US/support/downloads](http://www.avid.com/US/support/downloads)) to your System Director.
2. (If applicable) Log into Administrator account on the Standby System Director and Stop the Standby System Director using the ISIS Control Panel.

3. Make a copy of your current metadata files. The following are the file names and where they are located:

Metadata location

D:\Program Files\Avid\ISIS System Director

- Partition0
- Partition1
- PartitionDump.bin

4. Load the ISIS software kit on the System Director.
5. Double-click the Autorun.exe file in the software kit.

The installer detects the existing version of the installed software (if any) and displays the components that need to be upgraded in the splash screen.



*If the Package Selection menu does not allow you to select the software, click Quit and run the Autorun.exe again.*

6. If not already selected, select ISIS 2000 System Director from the “Select Software Package” menu.
7. Click Apply.
8. Follow the screen prompts accepting the defaults and License agreement.



*When uninstalling or upgrading the ISIS 2000 software, you might get prompted to confirm the removal of the File Gateway software. Type Y to confirm the removal and continue with the upgrade.*

9. Once the installation is complete, click Finish.  
You are prompted now to restart the System Director. After the System Director has restarted, continue with the next step.
10. Upgrade your Storage Manager, using the ISIS Management Console > Storage Managers. Select the original Storage Manager (typically labeled SM000) and click Upgrade.  
The Upgrade Storage Managers window opens.
11. Select the .zip file for the new release, and click Upgrade.  
If you have an ISIS 2000-120 configuration your upgrade is finished. Continue with this procedure if you have an ISIS 2000-240 configuration.
12. (ISIS 2000-240) Select the Storage Manager from the list and click Details.  
The Status for the upgrade is shown in the Details pane at the right of the window. Click the Refresh button whenever you want the updated Status. When the Status displays “Data Conversion Mode,” continue with the next step.



13. (ISIS 2000-240) Double-click the IP address of the original Storage Manager in the Details pane to open ISIS 2000 Storage Manager Agent Web page.
14. (ISIS 2000-240) You are asked for the password. Type **se-admin**.  
The ISIS 2000 Storage Manager Agent page appears.
15. (ISIS 2000-240) Click Network in the left pane of the System tab.
16. (ISIS 2000-240) Enter an IP address in the gx0:1 and Netmask text boxes in the Data Interfaces section.

Starting with the ISIS v4.5 release, the Engine Controller in the ISIS 2000 Engine requires dual IP addresses for ISIS 2000-240 systems. This new IP Address must be in the same subnet as the original IP address. Consult your network administrator to obtain an unused IP address.



*A second physical cable is not needed, both IP address are handled through the existing 10 Gb connection between Engine Controller and the switch.*

17. (ISIS 2000-240) Click Submit.
  - a. A dialog box appears warning you a Engine reboot is required; click the Reboot button.
  - b. A second dialog box appears, type **se-admin**. in the password box and click Reboot.
18. (ISIS 2000-240) When the Engine has restarted, open the Storage Manager page in the Management Console.



*When you upgrade from v4.2 and earlier to v4.5 and later, you will notice there are now two Storage Managers in the Storage Managers page displaying half the capacity that was previous listed and the Status column displays “Data Conversion Mode.” This is a normal one-time behavior when you upgrade from v4.2 and earlier to v4.5 and later.*



**Do not add any new ISIS 2000 Engines to this existing Storage Group until the ISIS v4.6 upgrade data conversion redistribution has completed.**

19. Install your Avid ISIS client software. For information, see Avid ISIS Client Software Installation or the *Avid ISIS Client Guide*.

## Avid ISIS Client Software Installation

This section contains information about installing or upgrading the client software on your system. A user account with Administrator privileges is required to install Avid ISIS client software on your workstations.

The *Avid ISIS Client Guide* contains complete instructions for loading the client software onto the system. You can access the documentation in the top-level AvidISISDocumentation folder on the Avid ISIS software installer kit. The following is a summarized version for installing the client software.

The clients are defined as follows:

- Avid editing applications (see “[Hardware and Software Requirements](#)” on page 36.)
- Interplay Assist and Instinct
- Interplay Access
- Avid Approved Applications Initiative such as Pro Tools

**To install your Avid ISIS Windows client software from the software kit:**

1. Log into your Windows client system as a user with Administrative privileges.
2. Load the new software kit on you Windows client system.
3. Double-click the `Autorun.exe` file in the software kit.

The installer detects the existing version of the installed client software (if any) and displays the components that need to be upgraded in the splash screen.



*If the Package Selection menu does not allow you to select the software, click Quit and run the `Autorun.exe` again.*

4. Select the “ISIS Windows Client” installer from the Select Software Package menu.
5. Click Apply.



*The installer automatically uninstalls an earlier version of software.*

6. Update the Intel Pro driver on your client system, see Loading or Updating the Intel Pro Driver on Windows Clients.
7. Repeat this procedure on each Avid ISIS Windows client.



*You can manually copy the client installers to a USB flash drive. The installers are in the Avid ISIS software kit located on `[drive]:\AvidISISClientInstallers`. You can also log into the Management Console and access the [Installers](#) link and download the appropriate client installer.*

**To install your Avid ISIS Macintosh client software:**

1. Copy and save the new `AvidISISClient_MacOSX_x.x.x.dmg` file from the:
  - ▶ `\AvidISISClientInstallers` folder in software kit to your Macintosh client system.
  - ▶ Management Console > Installer page to your Macintosh client system.

2. Double-click the `AvidISISClient_MacOSX_x.x.x.dmg` file.
3. Double-click the `AvidISISClient.mpkg` file to run the installer.  
Follow the on-screen instructions.



*The installer replaces earlier versions of the software (if any).*

4. Repeat this procedure on each Avid ISIS Macintosh client.



*You can manually copy the client installers to a USB flash drive.*



**The Macintosh client software installs an uninstaller application located at `Applications > Avid_Uninstallers > AvidISIS`. Use this application only when you want all Avid client files removed; including Client Manager preferences.**

#### **To install ISIS Linux client software:**

1. Copy and save the new `AvidISISClient_e16.x86_x.x.x.bin` file from the:
  - ▶ `\AvidISISClientInstallers` folder in software kit to the user's home directory of your Linux client system.
  - ▶ Management Console > Installer page to the user's home directory of your Linux client system.
2. Open the Terminal application: `Application > System Tools > Terminal` on your Linux client.



*When using the Terminal program, file names and paths are case sensitive.*

3. Type `cd [user's home directory]` and press **Enter**.
4. Do one of the following.
  - ▶ If you are not the root user, type `sudo ./AvidISISClient_e16.x86_x.x.x.bin` and press **Enter**. Enter your password.
  - ▶ If you are the root user, type `./AvidISISClient_e16.x86_x.x.x.bin` and press **Enter**.



*The installer replaces earlier versions of the software (if any).*



*You can manually copy the client installers to a USB flash drive.*

5. Restart the Linux client.

# Hardware and Software Requirements

To meet the stringent needs of media applications the ISIS family of storage solutions is built using patented intellectual property in ISIS software running on Avid ISIS hardware. Avid tests and qualifies configurations of Avid ISIS software deployed on Avid ISIS hardware. The ISIS System Director is designed to allow the binding of Avid ISIS storage *only*. Avid has not published its ISIS file system specifications, protocols, or ISIS file system API's used among the components of the file system (ISIS System Director, ISIS client, ISIS storage expansion engines) and these are subject to change without notice. Therefore, any connection of third party storage as part of an ISIS file system is not a licensed, approved or supported configuration.

The following table provides a list of product clients and infrastructure component software versions needed to work with Avid ISIS.



*Most Windows editing clients require the 1-Gb Intel Pro 1000 Ethernet board to connect to the Avid ISIS system. Macintosh clients and some Windows clients have been qualified to use the on-board 1-Gb ports. For instructions on installing the board and software, see for Avid ISIS Client Guide.*

## Avid ISIS v4.6 Qualified Clients

Software	ISIS 2000 Workspaces	ISIS 5500 Workspaces	ISIS 7000 Mirrored Workspaces	ISIS 7000 RAID Workspaces <sup>a</sup>
Media Composer	v5.5.x, v6.x, v6.5.x, v7.0.x	v5.5.x, v6.x, v6.5.x, v7.0.x	v5.5.x, v6.x, v6.5.x, v7.0.x	v5.5.x, v6.x, v6.5.x, v7.0.x
Media Composer 10-Gb client <sup>b</sup>	v5.5.x, v6.x, v6.5.x, v7.0.x	v5.5.x, v6.x, v6.5.x, v7.0.x	v5.5.x, v6.x, v6.5.x, v7.0.x	v5.5.x, v6.x, v6.5.x, v7.0.x
Avid Symphony	v5.5.x, v6.x, v6.5.x, v7.0.x	v5.5.x, v6.x, v6.5.x, v7.0.x	v5.5.x, v6.x, v6.5.x, v7.0.x	v5.5.x, v6.x, v6.5.x, v7.0.x
Avid Symphony 10-Gb client <sup>c</sup>	v5.5.x, v6.x, v6.5.x, v7.0.x	v5.5.x, v6.x, v6.5.x, v7.0.x	v5.5.x, v6.x, v6.5.x, v7.0.x	v5.5.x, v6.x, v6.5.x, v7.0.x
NewsCutter	v9.5.x, v10.x, v10.5.x, v11.0.x	v9.5.x, v10.x, v10.5.x, v11.0.x	v9.5.x, v10.x, v10.5.x, v11.0.x	v9.5.x, v10.x, v10.5.x, v11.0.x
NewsCutter 10-Gb client <sup>c</sup>	v9.5.x, v10.x, v10.5.x, v11.0.x	v9.5.x, v10.x, v10.5.x, v11.0.x	v9.5.x, v10.x, v10.5.x, v11.0.x	v9.5.x, v10.x, v10.5.x, v11.0.x
Avid DS	No real-time support (push/pull only)	v11.1	v11.1	Not supported

**Avid ISIS v4.6 Qualified Clients (Continued)**

<b>Software</b>	<b>ISIS 2000 Workspaces</b>	<b>ISIS 5500 Workspaces</b>	<b>ISIS 7000 Mirrored Workspaces</b>	<b>ISIS 7000 RAID Workspaces<sup>a</sup></b>
Avid DS 10-Gb client	No real-time support (push/pull only)	v11.1	v11.1	Not supported
Avid Interplay Common Services (ICS)	v1.7 with v4.6 ISIS client	v1.7 with v4.6 ISIS client	v1.7 with v4.6 ISIS client	v1.7 with v4.6 ISIS client
Avid Interplay with Assist	v2.6, v2.7	v2.6, v2.7	v2.6, v2.7	v2.6, v2.7
Avid Interplay Low-Res Encode	Not supported	Not supported	v2.6, v2.7	v2.6, v2.7
Avid Instinct	v2.7, v3.0, v3.0.5	v2.7, v3.0, v3.0.5	v2.7, v3.0, v3.0.5	v2.7, v3.0, v3.0.5
AirSpeed 5000	v2.5.x, v2.6	v2.5.x, v2.6	v2.5.x, v2.6	v2.5.x, v2.6
AirSpeed Multi Stream	v1.8.12	v1.8.12	v1.8.12	v1.8.12
AirSpeed	v2.7.12	v2.7.12	v2.7.12	v2.7.12
Pro Tools	v10.x, v11.0 No real-time support (push/pull only)	v10.x, v11.0 Real-time v8.1.x, v9.0.x No real-time support (push/pull only)	v10.x, v11.0 Real-time v8.1.x, v9.0.x Windows — Real-time streaming Macintosh — No real-time support (push/pull only)	v8.1.x, v9.0.x, v10.x, v11.0 No real-time support (push/pull only)

a. ISIS 7000 RAID 6 Workspaces support only resolutions that draw 16 MB/s (50 Mb/s) or less.

b. Ultra High Resolution Clients can mount RAID workspaces although, only resolutions that draw 16 MB/s (50 Mb/s) or less are supported.

## Supported ISIS 7000 System Directors

The following System Director servers are supported in Avid ISIS 7000 v4.x:

- AS3000 (Windows Storage Server 2008 with Avid ISIS v4.x, or Windows Storage Server 2008 R2 only with Avid ISIS v4.5 or higher)
- SR2500 (Windows Storage Server 2003)



*Avid ISIS v2.4 was the last release with support for the Intel SR2400 System Directors. If you have SR2400 System Directors, plan for System Director replacements before upgrading to this release.*

## Supported ISIS Client Operating Systems


The following table list the operating systems and Avid client software that are supported in Avid ISIS v4.6.

### Supported Software Client Operating Systems and Service Packs

Operating System	Version
Windows 8.1	No Service Pack
Windows 8 (64-bit)	No Service Pack
Windows 7 (64-bit)	Service Pack 1
Windows Vista (64-bit)	Service Pack 2
Windows XP (32-bit)	Service Pack 3
Windows Storage Server 2008 R2 (64-bit)	Service Pack 2
Windows Storage Server 2008 (64-bit)	Service Pack 2
Windows Storage Server 2003 (64-bit)	Service Pack 2
Windows Server 2003 (64-bit)	Service Pack 2
Mac OS X Mountain Lion (64-bit kernel)	10.8.x and 10.9.x
Mac OS X Mountain Lion (32-bit kernel)	v10.8.x
Mac OS X Lion (64-bit kernel)	v10.7.5
Mac OS X Lion (32-bit kernel)	v10.7.x
Red Hat Enterprise Linux (64-bit kernel)	v6.2

The following table lists the 10 Gb Avid clients that are supported in Avid ISIS.



### Supported Operating Systems with 10 Gigabit Ethernet Network Interface Cards

10-Gb Ethernet Network Interface Card	Supported Operating System
Myricom	Windows XP 32-bit, Windows Vista 64-bit, Windows Storage Server 2008, Windows 7 64-bit, Windows 8 64-bit, and dual quad-core MacPro workstations running Mac OS v10.7.x (Lion) and Mac OS v10.8.x (Mountain Lion), and Linux Red Hat v6.2
Chelsio — Chelsio cards are only supported in the Interplay Copy/Move services in an ISIS 7000 environment.	Windows XP 32-bit, Windows Vista 64-bit, Windows Server 2003
 <i>Editing clients with the 10-Gb Chelsio card are not supported in ISIS v4.5 and later.</i>	

## Supported Browsers in an ISIS Environment

The following are the browsers qualified in ISIS v4.6. These browsers were qualified with the client operating systems supported in the current release.

### Supported Client Browser per Operating System

Browser	Operating System
Internet Explorer 9 and Internet Explorer 10	Windows
Safari	Macintosh
Mozilla Firefox	Windows, Macintosh, and Linux
	 <i>If you plan to use the Firefox browser for FTP connections via the File Gateway, use the following format in your browser: username: virtual host name/ftpuser</i>
Google Chrome	Windows and Macintosh
	 <i>If you plan to use the Chrome browser for FTP connections via the File Gateway, use the following format in your browser: ftp://ftpuser@virtual host name:password@ alias.domain.com</i>

## Intel Ethernet Drivers

Intel Pro Ethernet adapter boards are recommended for most Windows based editing systems that connect to the Avid ISIS system.” The Intel Pro 1000 PT and Intel i350 T2 are a copper interface and the Intel Pro 1000 PF is an optical interface. The Intel driver qualified in this release is included in the Avid ISIS software installer kit (\Drivers\ISIS xxxx\Intel\_Pro1000 folder). Check the driver version listed in the Windows Control Panel on your Windows clients and ISIS System Directors. If you are not running the Intel Pro v17.4 driver (v18.6 is required for Windows 8.1), run the Intel\_17.4\_Winxxxx\_xx.exe installer file.



**Do not update the Intel drivers on Avid Interplay Engine cluster unless instructed to do so by the Interplay ReadMe or by Customer Support. Doing so could compromise the integrity of the cluster.**

### Intel Network Driver Per Operating System

Operating System	Driver installer
Windows 8 (64-bit)	Intel_17.4_Win2K8-8-7-Vista_64.exe
Windows 7 (64-bit)	Intel_17.4_Win2K8-8-7-Vista_64.exe
Windows Vista (64-bit)	Intel_17.4_Win2K8-8-7-Vista_64.exe
Windows XP (32-bit)	Intel_17.4_Win2K3-XP_32.exe
Windows Storage Server 2008 R2 (64-bit)	Intel_17.4_Win2K8-8-7-Vista_64.exe
Windows Storage Server 2008 (64-bit)	Intel_17.4_Win2K8-8-7-Vista_64.exe
Windows Storage Server 2003 (64-bit)	Intel_17.4_Win2K3-XP_64.exe
Windows Server 2003 (64-bit)	Intel_17.4_Win2K3-XP_64.exe

### Loading or Updating the Intel Pro Driver on Windows Clients

#### To load the Intel Pro driver on a Windows system:

1. Copy the file titled Intel\_xx.x driver to your system; found on the *Avid ISIS software kit* in (clients)\Drivers\ISIS Client\Intel\_Pro1000\ folder.
2. Double-click the .exe file to expand the compressed file and run the installer.
3. Accept the default settings to install the driver.



*The default Intel transmit and receive descriptors are set to 256 however, when loading the Avid ISIS client software the transmit and receive descriptors are set to 1024. For more information, see Avid ISIS Client Guide.*



4. After the Intel driver is installed, restart the Windows system.

### **Intel Pro Driver on ISIS 5500 Engines**

The Intel driver is automatically updated and configured on the ISIS 5500 System Director and Engines when you install the ISIS 5500 Software.

### **HP Z820 Integrated Network Port Not Supported**

The integrated 82759LM port is marked with the letters AMT in the HP Z820 Workstation is not supported as an ISIS client connection. The other integrated Ethernet port that is not labeled is qualified for an ISIS client a connection. To use a dual 1 Gb connection with the HP Z820 Workstation, you must install an Intel Pro 1000 PT, Intel i350 T2 or Intel Pro 1000 PF for the second port.

### **HP Z400, HP Z420, and HP Z800 Integrated Network Port Not Supported**

The integrated Gigabit Ethernet controller in the HP Z400, HP Z420, and HP Z800 Workstations are not supported as an ISIS client connection. The HP Z400, HP Z420, and HP Z800 require the installation of the Intel Pro 1000 PT, Intel i350 T2 or Intel Pro 1000 PF.

### **HP Z200 and Z210 Integrated Network Port Is Supported**

The integrated Intel 82578 Gigabit Ethernet controller in HP Z200 and Z210 Workstations are supported as an ISIS client connection. The Z200 Z210 were qualified for use with Avid Assist, Avid Instinct, and software-only Avid editing clients. The current Intel driver supported in this release is required. For specific details on Z200 and Z210 support on the Avid editing systems, see the Avid editor ReadMe and Avid Knowledge Base.

### **HP xw8600 ISIS Client Support**

The Intel Pro 1000 board slot in HP xw8600 with has changed in ISIS v3.2. The previous slot for the Intel Pro 1000 was slot 6; the new slot requirement is slot 5. For details on the slot location, search the Avid Knowledge Base for the “Avid Configuration Guidelines and Slot Configurations” at [www.avid.com/US/support](http://www.avid.com/US/support).

The Intel driver for the Intel Pro 1000 board in slot 5 also requires Intel driver v14.7. This is the same version as previously supported. Do not update the Intel Pro 1000 driver to v17.4 as required for all other supported Windows clients. The Intel driver qualified in this release is included in the Avid ISIS software installer kit (\Drivers\ISIS Client\Intel\_Pro1000 folder).

## Small Tree Optical Adapters for Macintosh Clients

Avid has also qualified the Small Tree PEG1F single port or PEG2F dual port optical adapters in the slot 2 of a Macintosh Pro Nehalem system (2.66 GHz or 2.93 GHz) to be used in the Force10 S24P optical (fibre) switch.

## Qualified and Approved ISIS Switches

The following tables provide a summary of what switches have been qualified or approved for use in the Avid Production Network (APN) of the indicated ISIS Shared Storage Environment. The tables also identifies the qualified external switches (EXS) for linking the Management Domains two stack ISIS 7000 configurations. For information on configuring the ISIS switches, see the *Avid Network and Switch Setup Guide* in the documentation folder of the Avid ISIS software kit [drive]:\AvidISISDocumentation.

Qualified and approved switches are defined as follows:

- Qualified — tested with each major software release.
- Approved — tested once with no subsequent re-testing.

### APN Switches Qualified for the ISIS Environment

Switch	ISIS 7000	ISIS 7000 External Expansion Switches (EXS)	ISIS 5500	ISIS 2000
Cisco Catalyst 4948E	✓		✓	
Cisco Catalyst 4948-10GE	✓		✓	
Cisco Catalyst 4900M	✓	✓	✓	✓
Force10 S25N and S25P			✓	
Force10 S60	✓		✓	
Force10 S4810		✓	✓	✓
Foundry/Brocade FESX424 and FESX624	✓		✓	

## APN Switches Approved for the ISIS Environment

Switch	ISIS 7000	ISIS 7000 External Expansion Switches (EXS)	ISIS 5500	ISIS 2000
Arista Networks 7048T-A	✓		✓	
Cisco Nexus 7000 series	✓		✓	✓
Cisco Catalyst 4500-X	✓	✓	✓	✓
Cisco Catalyst 6500-E series	✓		✓	✓
Foundry/Brocade SuperX	✓		✓	✓
Foundry/Brocade FESX448 and FESX648	✓		✓	

Most Windows editing clients must use the 1 Gb Intel Pro 1000 PT, Intel i350 T2 or Intel Pro 1000 PF Ethernet board to connect to all Avid ISIS system. Macintosh clients can use the built-in Ethernet port or Small Tree PEG1F or PEG2F optical adapters.



*All Force10 switches ship from Avid preconfigured for an Avid ISIS 5500 environment. You should upgrade your switch to the latest configuration file found in the ISIS software kit. For information on configuring the switches, see the Avid Network and Switch Setup Guide in the documentation folder of the Avid ISIS software kit [drive]:\AvidISISDocumentation.*



*When connecting 10 Gb clients on Force10 S25 switches, you must enable flow control TX and RX on the 10 Gb switch ports for the ISIS clients, servers, and Engines, see Turning on Flow Control in the Force10 S25 Switch.*

## Cascaded Switches

Limited cascaded switch configurations are supported in ISIS environments. For information on supported configurations, see the *Avid Network and Switch Setup Guide* in the documentation folder of the Avid ISIS software kit [drive]:\AvidISISDocumentation.

## Gold Disk Qualification

The following Avid ISIS systems comply with US Defense Information Systems Agency (DISA) Gold Disk requirements for network devices:

- Avid ISIS 7000 v4.x AS3000 System Director with the Windows Storage Server 2008 operating system, or the Windows Storage Server 2008 R2 operating system with Avid ISIS v4.5 or higher
- Avid ISIS 5500 v4.x System Director with the Windows Storage Server 2008 operating system, or the Windows Storage Server 2008 R2 operating system with Avid ISIS v4.5 or higher
- Avid ISIS 2000 v4.5 AS3000 System Director with Windows Storage Server 2008 R2 operating system



*Only Windows 8, Windows 7, and Windows Vista (64-bit) clients were qualified the Gold Disk environment. Macintosh and Linux clients are not supported.*

The following requirements apply in a Gold Disk environment.

## Software Installation

### To install the ISIS software in a Gold Disk environment:

1. Remove the System Director from the Active Directory Domain.
2. Log into the local Administrator account, created prior to adding the System Director to the Active Directory Domain (note that Administrator is disabled).
3. Install the ISIS software (System Director, switch, storage blades and Engine upgrades).
4. Once completed, add the System Director back into the Active Directory Domain.

## ISIS Control Panel Functions

In a Gold Disk environment you must open the System Director Control Panel from the Programs menu.

### To use the ISIS Control Panel in a Gold Disk environment:

1. Click Start > Programs > Avid > ISIS System Director > Control Panel.
2. When prompted, select “Run as Administrator.”

This enables you to Start and Stop the System Director, as well as set or modify other configurations.

## Compatibility with Internet Explorer

### To turn on compatibility mode in Internet Explorer:

1. Click the Tools menu and select Compatibility View Settings in your Internet Explorer browser.
2. Type in the IP address of your Storage Manager and click Add.
3. Close the open browser dialog box.

## Add Storage Manager as a Trusted Site

### To add Storage Manager as a trusted site:

1. Click the Tools menu and select Internet Options in your Internet Explorer browser.
2. Click the security tab.
3. Click Trusted sites.
4. Click the Sites button.
5. Type in the IP address of your Storage Manager and click Add.
6. Close the two open browser dialog boxes.

# Special Notes (ISIS 7500 | 7000, 5500 | 5000, and 2000)

This section contains important information about the Avid ISIS environment.

## Delete Logging Setting

Turning delete logging on or off while files are actively being deleted from the ISIS file system will cause the ISIS System Director to crash. Avid recommends that you do not change the delete logging setting during normal operation of your ISIS system. This setting should only be changed during a maintenance window to minimize any disruption.

## User Permissions

A user account with Administrator privileges is required to install Avid ISIS client software on your workstations.

## Flash Player Software

To use the ISIS Management Console, make sure the Adobe Flash Player (v11.x and later) installed on your system. If you encounter problems with the ISIS Management Console display, you might have an outdated version or multiple versions of the Flash Player installed. Uninstall any previous versions of Flash Player and install the Flash Player included on the Avid ISIS Management Console > Installers page.

## Avid Interplay Authentication

Avid Interplay Authentication requires the Avid ISIS System Director to use a virtual name. The System Director's virtual name must not match the actual host name and must be entered in the General Configuration Options dialog box. For instructions on adding the virtual name, search the *Avid ISIS Administration Guide* for General Configuration Options.

## Avid Interplay Copy Service and Move Service in Zone 3

The Avid Interplay Copy Service and Move Service using an AS3000 or the SR2500 Interplay Copy/Move server with a single 10 Gb Myricom board installed has been qualified in Zone 3 of the ISIS 7000 and ISIS 5500 environments. This qualification requires the ISIS 7000 v2.4, ISIS 5000 v3.2, or ISIS v4.x infrastructures with ISIS v3.5 and later client software.

The Avid Interplay Copy Service and Move Service on the SR2500 server with the Chelsio 10 Gb network adapter is only qualified in Zone 1 of the ISIS 7000 environment.

## Illegal Characters in File, User, and Workspace Names

You must use Unicode characters in workspace names. The following is a list of 17 illegal characters you should not use in workspace names, workgroup names, filenames, user names, device names, and storage group names: \ / = @ [ ] % \* ? + | : " ; , < >. You also should not use a period (.) as either the first or last character in the names you create, and you should not include a space in workspace names when in an Avid Interplay environment. Some of these characters might appear to be safe to use, but in mixed environments with Macintosh, Windows, and various other clients and operating systems, these characters have resulted in unexpected behavior.



*The System Director does not support viewing regional language characters in the Management Console.*

## LDAP Requires Unicode User Names and Passwords

The Avid implementation of LDAP (Lightweight Directory Access Protocol) requires that you restrict LDAP user names and passwords to ASCII. The LDAP/ISIS Account Synchronizer searches for groups and their users on an LDAP server and synchronizes (reconciles) user and group accounts by adding or removing users and/or groups from ISIS,

## Fast User Switching Not Supported

Fast User Switching is a Windows feature that allows multiple user accounts to log on to a computer simultaneously. Fast User Switching is enabled by default in Windows computers. The Fast User Switching feature and multiple concurrent logged on user modes are not supported in the Avid ISIS environment. The ISIS software does not distinguish the different drive letters mapped to the same workspaces on the same computer. Conflicts appear in the following two scenarios:

- When one user maps a drive letter to one workspace and another user maps the same drive letter to a different workspace
- When one user maps a workspace to one drive letter, and another user maps a different drive letter for the same workspace.

## Avid ISIS Firewall

Avid ISIS ships with the Windows Firewall turned off. For a list of the ports used in the Avid ISIS, see the *Avid Network and Switch Guide*. This guide is available from the installer Documentation link, the Management Console Help link, and the `\AvidISISDocumentation` folder in the ISIS software kit.

## Multiple ISIS Systems

If you are setting up multiple ISIS shared storage systems, make sure that each system is on a separate network.

## Macintosh Resource Files and Windows Clients

If Macintosh files are copied to a Windows system with the Macintosh resource fork files, the resource fork files cannot be copied to mounted workspaces from a Windows client. Avid ISIS does not accept Macintosh resource fork files from Windows clients. Appropriate “properties” error messages are displayed if this is attempted.

## Adobe Premiere Pro Software Approved

Avid has tested Adobe Premiere Pro as a client in the Avid ISIS 7000 and ISIS 5500 shared storage environments. The ISIS 2000 only supports Adobe Premiere Pro in push/pull workflows. The following guidelines and restrictions apply to Adobe Premiere clients.

- Adobe Premiere was qualified on Windows 7 64-bit and Macintosh v10.7.3 64-bit operating systems.
- Adobe Premiere 10 Gb clients are not supported.
- Avid ISIS supports Adobe Premiere Pro clients in Zones 1, 2, and 3.
- Media from both Adobe Premier and Avid Media Composer are able to co-exist in the same Storage Group. Although for optimal performance, you should not mix Avid and Adobe Premier editors in the same Storage Group.
- Adobe Premiere clients follow the same guidelines as for Avid editors in regards to the Avid ISIS Client Manager Preference settings. The default Client Type setting is set to Medium Resolution (limited to resolutions that draw 16 MB/s or less). Use the High Resolution setting when working with High Definition media (resolutions that draw higher than 16 MB/s). There are some HD resolutions that draw less than 16 MB/s for a single stream, but you should still use the High Resolution setting (for example, XDCAMHD 50). For information on how many streams were qualified per client at various resolutions, see the *Avid ISIS Performance Guide* on the Knowledge Base at [www.avid.com/support](http://www.avid.com/support).

## Final Cut Pro Software Approved

Avid has tested Final Cut Pro version 7 as a client in the Avid ISIS 7500 | 7000 and ISIS 5500 | 5000 shared storage environments. The ISIS 2000 only supports Final Cut Pro in push/pull workflows. Testing was done with Final Cut Pro v7.0.3 with Mac OSX v10.6.8 and v10.7.x (32-bit). Final Cut Pro X has not been qualified. There is no Avid restriction on the QuickTime version. Use the QuickTime version recommended in the Final Cut Pro application. Avid ISIS supports Final Cut Pro v7.x Macintosh clients in Zones 1, 2, and 3. For information on how many streams were qualified per client at various resolutions, see the *Avid ISIS Performance Guide* on the Knowledge Base at [www.avid.com/support](http://www.avid.com/support).



*Avid Interplay Access supports the Mac OSX platform, and through this application Final Cut Pro QuickTime files and projects can be checked into Interplay. Any Interplay workstation can search for these files and edit their Interplay metadata, though there is currently no tightly integrated workflow between Avid Media Composer and Final Cut Pro within Interplay.*



## Power Saving Modes

Do not use power saving modes on Avid ISIS clients. Your power saving options should be set to never go into low power mode and should be set to “Always On” (Windows) or High Performance (Macintosh). Is it critical that each client in a Direct Connect environment have the network board option “reduce link speed during standby power saving” disabled.

## Virus Protection

Windows updates are not installed automatically on the System Director. If you are connected to the Internet, Avid recommends you manually select your Windows updates and install them during a scheduled maintenance intervals. Some updates require that you restart the System Director. In addition, anti-virus programs that contain autoscanning features (for example File System Auto-protect or scanning files on network drives) are not supported.

Access the Knowledge Base at [www.avid.com/securityupdate](http://www.avid.com/securityupdate) and review the Microsoft Security Bulletin Addendum document. This link also includes anti-virus software support on Avid products which can be found in the Avid Security Guidelines and Best Practices document.



**Virus protection software and Windows updates will result in workflow interruptions, and should be performed during a scheduled maintenance interval.**

## Uninterruptible Power Supply

Avid highly recommends using an Uninterruptible Power Supply (UPS) with all Avid ISIS components.

Without a UPS if you lose power while capturing media, some data loss for newly captured media will likely occur. The recently written data in the RAID controller that has not been written out to the data drives would be lost.

## Avid ISIS 7500 | 7000 Special Notes

The following is a list of features for should keep in mind with Avid ISIS 7500 | 7000 infrastructures:

### Upgrading Unstacked Switches

If you need to upgrade switches that are not yet stacked, the Avid ISIS software kit includes the Avid ISIS Upgrade Utility. This stand-alone application allows field engineers to start and monitor the installation of switch and ISB upgrades from a laptop connected to Avid ISIS switch through the management port. This utility does not replace the current upgrade process. Its

primary function is for upgrading a switch or a pair of switches that is incompatible with an existing stacked network. Insertion of these switches into the network before the upgrade could disrupt or compromise the network's operation. For instruction on using the utility, see the *Avid ISIS 7000 Setup Guide*.

The Avid ISIS Upgrade Utility (AvidUnityISISTools.msi) can be found on the Avid ISIS software kit in the \ISISUtilities\ISIS 7000 folder.

## ISIS 7500 | 7000 System Director

The Avid ISIS System Director uses an Avid AS3000 server or Intel SR2500 server with 9 GB of memory and a 64-bit Windows operating system. The new 64-bit System Director provides the following support:

- 64-bit System Director — 10 million files
- 64-bit System Director — 500,000 folders (25,000 files per folder)
- 5638 users
- 1000 groups — a user can be in 15 groups

## ISIS 7000 Client Connections

Starting with ISIS v4.0, Avid ISIS 7000 automatically supports up to 330 ISIS client licenses.

## Storage Group Size

Storage Managers are combined to create Storage Groups in the ISIS file system. These Storage Groups can be configured to operate using either 512 KB (default) or 256 KB chunk sizes. Earlier Avid ISIS releases used 256 KB chunk sizes. For more information about setting the chunk size, see the *Avid ISIS Administration Guide*.



*Avid ISIS switch hardware shipped with v1.x (ISS1000 and IXS1000) does not support 512 KB chunk sizes. If you have Avid ISIS v2.x software running on v1.x switches, you must select the 256 KB chunk size when adding Storage Managers to the file system to create Storage Groups.*

You cannot change the chunk size of a Storage Group once the Storage Group has been created. To change the chunk size of an existing Storage Group, you must delete the Storage Group and create a new Storage Group with the desired chunk size. The chunk size selection is only available when adding the Storage Managers.

## Chunk Size Support With ISB

All ISBs (i500, i1000, i2000, i4000 and i8000) support the 512 KB chunk size, although you must have v2.x switch hardware (ISS2000 and IXS2000) to use the 512 KB chunk size. Only i500 and i1000 ISBs support 256 KB chunk sizes.

## 10 Gb Client Support in ISIS 7000

The following are guidelines as to the number of clients that are supported in Zone 1 (directly connected to an ISS in an ISIS 7000 Engine). When a 10 Gb device is connected to your ISS, some of the 1 Gb ports cannot be used:

- High Resolution 1 Gb clients — four or less with one Ultra High Resolution 10 Gb client
- Medium Resolution 1 Gb clients — five or less with one Ultra High Resolution 10 Gb client

## RAID-6 Storage Groups, Single ISB Failure

When there is a single ISB failure in an ISIS Storage Group configured with RAID protection, the Storage Group continues to function normally at a lower bandwidth. For mirrored Storage Groups, see [“Mirrored Storage Groups, Single ISB Failure” on page 52](#).

After confirming the failure of an ISB, Avid highly recommends that you initiate the remove redistribution process of the failed ISB immediately. There are two benefits to doing this:

- Immediately upon initiation of the remove redistribution, all new writes to the Storage Group have the full benefit of RAID-6 protection (dual-parity protection).
- Upon completion of the remove redistribution process, existing data in the Storage Group is once again fully protected. Prior to completion, if another ISB were to fail, the Storage Group would be in an unprotected state (though no data would be lost).

## RAID-6 Storage Groups, Dual ISB Failure

An “unprotected state” exists if a RAID-6 Storage Group has two failed ISBs. In an unprotected state with no additional failures, read operations continue to function normally at a lower bandwidth.

However, in an unprotected state, due to the distributed architecture of the ISIS file system (optimized for real-time performance), under certain circumstances the system cannot correctly update the parity information when writing new data. As a result, the file system could return a failure status when writing. While the failure rate percentage on the total number of write operations is low, heavy workloads on the system would result in enough write failures to disrupt operations.

This issue only applies when the Storage Group is in an unprotected state and the remove redistribution process on the failed ISBs has not been initiated. Therefore, it is highly recommended that the remove redistribution process is initiated immediately upon confirmation of any ISB failure. This ensures immediate protection (RAID or mirroring) of new data being written, and full protection of all stored data at the earliest possible time.

## Mirrored Storage Groups, Single ISB Failure

An “unprotected state” exists if a single ISB fails in a mirrored Storage Group. In an unprotected state with no additional failures, read operations continue to function normally.

However, in an unprotected state a subsequent or infrastructure failure will cause operational issues which could result in failures when writing new data or prevent you from accessing data in the Storage Group. An additional ISB failure creates a situation in which data accessibility has been compromised. Networking issues, on the other hand, will not cause accessibility issues on previously written data but might prevent the successful completion of the active write operation.

This issue only applies when the Storage Group is in an unprotected state and the remove redistribution process on the failed ISBs has not been initiated. Therefore, it is highly recommended that the remove redistribution process is initiated immediately upon confirmation of any ISB failure. This ensures immediate protection (RAID or mirroring) of new data being written, and full protection of all stored data at the earliest possible time.

## Adding or Removing ISBs (Mirrored or RAID-6)

When permanently adding or removing ISBs from an ISIS Storage Group (for example, adding or removing an engine to the storage stack), Avid recommends performing a full redistribution for all workspaces in the Storage Group, after the ISB add or remove is complete.

The full redistribution makes sure all blocks in the Storage Group are optimally distributed based on the new permanent configuration, and minimizes the potential for problems if a full redistribution is required in the future; for example, storage blades getting full during a full redistribution and requiring the user to delete files to allow the redistribution to complete.

This recommendation does not apply to the case of removing and then replacing failed storage blades. For other examples of symmetric and non-symmetric redistributions, see the *Avid ISIS Performance and Redistribution Guide* on the Knowledge Base at [www.avid.com/US/support](http://www.avid.com/US/support).

## Adding a Storage Manager (ISB) to the File System

If you add an Storage Manager (displays as an unbound Storage Manager) to your file system, make sure you match the Chunk Size of the new Storage Manager to the Chunk Size of the existing Storage Group. New Storage Managers are added with a default chunk size of 512 KB on mirrored Storage Groups (256 KB with i1000 ISBs). You cannot mix Chunk Sizes within a

Storage Group. To change the Chunk Size of an Storage Manager, you must remove the new Storage Manager from the file system and add the Storage Manager again and select the same Chunk Size of the existing Storage Group.

## Zone 1 Switches

The ISIS v2.x generation IXS and ISS switches install in the same Engines as earlier releases. However, all the switches in the Engines must be of the same generation. The two new switches are labeled IXS2000 and ISS2000. The new switches cannot be mixed in ISIS Engines with earlier versions of the switches (labeled IXS1000 and ISS1000). If your IXS and ISS switches are not labeled, consider them the earlier versions. The ISS2000 switches are required for 10-Gb clients and 512 KB chunk size; see [“Storage Group Size” on page 50](#).

The Avid ISIS documentation refers to IXS2000 and ISS2000 switches as v2.x hardware and IXS1000 and ISS1000 switches as v1.x hardware.

## Full Redistribution

After updating the Avid ISIS server software, and the ISIS software on all the clients, Avid recommends you do a full redistribution (one-time full remapping redistribution) at your earliest convenience to take advantage of the performance optimization introduced with Avid ISIS v2.x. After the full remapping redistribution, full redistributions that might have taken several hours in earlier releases can be performed in a matter of minutes, depending on the system load.



**Once you do a full redistribution with v2.x, v1.x clients cannot read from, or write to, those workspaces. For more details, see [“Software Installation Instructions” on page 13](#).**

The faster full redistributions only apply to workspaces that have had symmetric configuration changes; for example, if you removed and then added the same number of ISBs to a storage group in a single configuration change. For examples of symmetric configuration changes search the Avid Knowledge Base for the *Avid ISIS Performance and Redistribution Guide*. As with all full redistributions, select all workspaces in the storage group for the full redistribution.

A full redistribution is still recommended at 10 configuration changes. At 32 configuration changes the Avid ISIS software automatically performs a full redistribution.

## Automatic Redistribution on Disk Failure

Avid ISIS performs an automatic redistribution on Disk Failure notification. Storage Elements continuously monitors disk status and sends a “Disk Failed” notification to the System Director upon determination that a disk is not usable. The System Director then removes the Storage Element from its associated Storage Group. The removal of the Storage Element from the

Storage Group initiates redistributions on all workspaces associated with that Storage Group. The System Director then prevents the Storage Element that reported the disk failure from being added to a Storage Group.

The Automatic Removal feature is controlled by a system preference, called “Auto Remove Redistribution on Disk Failure,” that is configured using the ISIS Management Console Preferences tool. The default setting is “enabled.” The Storage Element is removed from the Storage Group, but not unbound from the ISIS Systems for the following reasons:

- The Storage Element participates in the removal redistribution. This is required to prevent data loss when full redundancy has not been attained for all data blocks.
- The Storage Element continues to report status, such as physically replacing the blade.

Auto-removal status is reported in the System Event Log. A sequence of event log entries is generated for the initial report of the failure, the decision to remove the Storage Element, and subsequent success or failure. Events are also logged for the start and stop of all the workspace redistributions.

When using Automatic Redistribution:

- Keep at least 7% of your Storage Group unused at all times. Failure to do so can cause the system to run out of space after an automatic redistribution has initiated and cause a client outage. For more information, see [“Minimum ISIS 7000 Storage Space Requirement” on page 56](#).
- If an automatic redistribution of a Storage Group is started during a critical time the overall system performance can degrade significantly and be disruptive. For more information on understanding the performance characteristics during remove redistribution, see the *Avid ISIS Performance and Redistribution Guide*.
- An automatic redistribution removes the Storage Element from the Storage Group but not from the file system. Once an automatic redistribution has completed, remove the Storage Element from the file system with the software and then physically replace it. Adding a replacement ISB to the file system and then to the Storage Group triggers another redistribution.
- If unmirrored workspaces are in use, the data will be damaged on those workspaces in that Storage Group.

## Firmware Upgrade During a Redistribution

Do not perform an ISB firmware upgrade while a Redistribution is in process. Make sure all firmware upgrades are completed before starting any redistribution. The following events trigger redistribution:

- Moving a Workspace
- Clicking “Full Redistribution” on a Workspace
- Adding a Storage Element to a Storage Group
- Removing a Storage Element from a Storage Group
- Changing the state of a Workspace to mirrored or unmirrored

**If a firmware upgrade must be done and a redistribution in progress, do the following:**

1. Suspend the active redistribution using the Advanced Commands in Workspace window.
2. Verify that the Workspace displays “redistribution suspended” in the Status column and all other workspaces do not have “redistribution in progress” displayed.
3. Perform the firmware upgrade on the ISB(s) that must be upgraded.
4. Wait until the firmware upgrade is completed successfully.
5. Resume the redistribution using the Workspace window.

## Avid Interplay Authentication

Avid Interplay Authentication requires the Avid ISIS System Director to use a virtual name. The System Director’s virtual name must not match the actual host name and must be entered in the General Configuration Options dialog box even if your Avid ISIS system configuration only has one System Director. For instructions on adding the virtual name, search the *Avid ISIS Administration Guide* for General Configuration Options.

## Workspace Names

You must use Unicode characters in workspace names. You cannot use the following 16 illegal characters in workspace names, workgroup names, filenames, user names, device names, and storage group names: \ / = @ [ ] % \* ? + | : " ; , < > . In addition, do not use a period (.) as either the first or last character in the names you create, and do not include a space in workspace names in an Avid Interplay environment.



*The System Director does not support viewing regional language characters in the Management Console.*

Workspace names beginning or ending with a period are no longer valid in Avid ISIS v1.4 and later. If you already have workspace names with periods and upgrade to Avid ISIS v1.4, the original issues continue to exist as outlined below:

- Windows — Data is preserved and intact with display issues. A filename or directory with a period at the end is invalid in Windows. As a result the Avid ISIS client is trying to interpret a period at the end of a workspace into something Windows can understand. This interpretation appears as a graphic instead of a period.
- Macintosh — Data is preserved and intact, but any workspace with a name that starts with a period is treated as a hidden directory by Mac OS X. By default such a workspace cannot be accessed via the Desktop and cannot be seen in the “/Volumes” folder in the Finder.

**To access the contents of the Macintosh workspace:**

- ▶ Click Go > Go to Folder... menu in the Finder and type the path “/Volumes/” followed by the workspace name (for example, “/Volumes/.MyWorkspace”).

A window opens showing the contents of the workspace and makes the workspace temporarily visible as a subdirectory of “/Volumes.”

## Network Connections

The ISIS network topology uses two separate domains, with one domain represented by the ISSs on the left side of the ISIS Engine and the second domain represented by the ISSs on the right side. The default network IP address configuration is shown in the following table:

### Default Network Addresses for Avid ISIS Engines

Location	Network IP Addresses	Subnet Mask
Left side of engine	192.168.10.0	255.255.255.0
Right side of engine	192.168.20.0	255.255.255.0

For more addressing information, see “IP Addressing Overview” in the *Avid ISIS 7000 Setup Guide*.

Avid ISIS does not support Zone 1, 10/100 BASE-T network interface connections. 10/100 BASE-T clients must be attached as a Zone 2 or 3 client.

## Minimum ISIS 7000 Storage Space Requirement

Avid recommends that you maintain 7% of free space in each Storage Group. In other words, you should not fill a Storage Group more than 93% full. Exceeding 93% used space can produce severe performance issues in some situations.



To calculate the right amount of free space, log into the ISIS management Console and navigate to the Storage Group window. For each Storage Group, take the Effective number and multiply by 0.07. This will be your recommended free space in GBs. To make sure that your Storage Group never exceeds the recommended space, create a new workspace in this Storage Group with the same size and label it “Headroom” and do not give anyone access to this workspace.

## Enabling the Distributed File System on Windows Vista

Avid ISIS v2.0.4 and earlier disabled the Windows Vista Distributed File System (DFS) on Windows Vista clients. DFS was disabled because Avid ISIS clients running Windows Vista were experiencing delays when opening files over the shared storage network with DFS enabled. Windows Vista service pack 2 (SP2) corrects the delays experienced with DFS enabled. Avid ISIS v2.0.5 and later client software detects the service pack version installed on the Windows Vista client and leaves DFS enabled if using Windows Vista SP2. If you have Windows Vista SP1 installed, DFS is disabled. To run DFS on your Windows Vista client, perform the Windows Vista update to install SP2 and reinstall the Avid ISIS v2.0.5 and later client software.

## Spanning Tree PortFast Required with Dual Network Client Ports

If Spanning Tree PortFast is disabled when your system is recovering from a link failure using a dual network client port, a “semaphore time-out” error message appears.

# Avid ISIS 5500 | 5000 Special Notes

The following list applies to Avid ISIS 5500 infrastructures:

## ISIS 5500 | 5000 Single Engine Configurations with Routed Clients

For single engine ISIS 5500 | 5000 configurations that include routed clients (Layer 3 to the ISIS 5500 | 5000), the Engine can be connected to the switch using either 10 Gb or 4 x 1Gb.

## ISIS 5500 System Director

The Avid ISIS Engine System Director provides the following support:

- System Director — 8 million files and folders (combined total)
- 5638 users
- 1000 groups — a user can be in 15 groups

## Up to Six Engines on ISIS 5500

The initial release of Avid ISIS 5000 supported one or two Engines. Avid ISIS 5000 v3.1 included support for four Engines; starting in ISIS v3.2 six Engines are supported. New Engines can be configured as separate Storage Groups or be added to existing Storage Groups. If you choose to add the new Engines to an existing Storage Group, a redistribution of the existing data is initiated to spread the data evenly across all drives in the storage group (see [“Redistributing Data on ISIS 5500” on page 59](#)). For instructions on adding new Engines, see the *Avid ISIS 5500 Setup Guide*.



*You can mix both 1 TB, 2 TB and 4 TB Engines in the same Storage Group, but 2 TB drives are restricted to the same capacity as 1 TB drives.*

You can add unassigned storage Engines to a Storage Group to increase its storage capacity and bandwidth. This is typically done when adding a new Engine to your Avid ISIS system. Redistribution is an operation that ensures all files on a Workspace are balanced evenly across the Storage Elements in the Storage Group to provide optimal file system performance. For more information, see “Redistributing Data” in the *Avid ISIS Administration Guide*.

When redistributing files in a Storage Group, the redistribution applies to all Workspaces in that Storage Group.

## ISIS 5500 Client Connections

Starting with ISIS v4.0, Avid ISIS 5000 supports up to 90 ISIS client licenses. Direct Connect configurations to support up to 9 clients. The ISIS 5500 connections are summarized in ISIS 5500 Terminology.

## 10 Gb Client Support in ISIS 5500

You can have one 10 Gb client per ISIS 5500 Engine. For example, in a six Engine configuration you can have six 10 Gb clients. These 10-Gb clients connect into a 10-Gb port on a qualified switch or can connect directly into the ISIS 5500 System Director 10-Gb port on a switch-less configuration.

## Initialize RAID Set on ISIS 5000

Avid ISIS 5000 v3.1 provided an alternative method of initializing the RAID set. You can initialize the RAID set on the 16 data drives without installing the ISIS 5500 | 5000 software. This might be helpful if you want to create the RAID set before setting up the ISIS 5500 | 5000 shared storage network. An “Initialize Raidset” link has been added to the software installer splash screen.



*If you click the Initialize Raidset link and your RAID set is already configured, a “Raidset created” message is displayed.*

When you initially install the Avid ISIS software, the RAID set is initialized automatically. With no client traffic on the system, this will take up to approximately 54 hours. During this initialization, the system is functional and able to support a limited amount of client traffic. An Avid ISIS 5000 Engine can support full bandwidth to one client during initialization. This allows sufficient bandwidth to test the system before the initialization is complete by working with one client at a time. During initialization, keep Client bandwidth to a minimum. Failure to do so can significantly increase the initialization time.

#### **To initializing the RAID set:**

1. Do one of the following:
  - ▶ Double-click the Autorun.exe file in Avid ISIS 5500 | 5000 software kit.
  - ▶ Click the “Initialize Raidset” link on the lower right-side of the splash screen.

## **Redistributing Data on ISIS 5500**

You can add unassigned Storage Elements to a Storage Group to increase its storage capacity and bandwidth. When adding a new Engine to the ISIS system, a redistribution is required if adding the new Engine to an existing Storage Group. If adding a new Engine and creating a new Storage Group, no redistribution is performed. Redistribution is an operation that ensures all files on a Workspace are balanced evenly across the Storage Elements in the Storage Group to provide optimal file system performance. For more information, see “Redistributing Data” in the *Avid ISIS Administration Guide*.

ISIS 5000 v4.0 and ISIS 5500 | 5000 v4.5 and later supports removing Storage Managers from a Storage Group.



*When redistributing files in a Storage Group, the redistribution applies to all Workspaces in that Storage Group.*



**When a Workspace is deleted, a redistribution is initiated. If you start the delete during high client usage, it might cause a negative performance impact on your clients. This can include dropped frames, underruns, and failed captures. Delete Workspaces during periods of light client activity.**

## **Minimum ISIS 5500 | 5000 Storage Space Requirement**

Avid recommends that you maintain 5% of free space in each Storage Group. In other words, you should not fill Storage Group more than 95% full. Exceeding 95% used space can produce severe performance issues in some situations.

To calculate the right amount of free space, log into the ISIS management Console and navigate to the Storage Group page. For each Storage Group, multiply the Effective number by 0.05. This is your recommended free space in GBs. To make sure that your Storage Group never exceeds the recommended space, create a new workspace in this Storage Group with the same size and label it “Headroom” and do not give anyone access to this workspace.

## Avid ISIS 2000 Special Notes

The following list applies to Avid ISIS 2000 infrastructures:

### ISIS 2000 System Director

The Avid ISIS 2000 System Director uses an AS3000 server with 24 GB of memory and a 64-bit Windows Storage Server 2008 R2 operating system. The ISIS 2000 System Director provides the following support:

- 64-bit System Director — 10 million files
- 64-bit System Director — 500,000 folders (25,000 files per folder)
- 5638 users
- 1000 groups — a user can be in 15 groups

### Up to Five ISIS 2000 Engines

The initial release of Avid ISIS 2000 supported one Engine; ISIS v4.5 added support for up to five ISIS 2000 Engines. New Engines can be configured as separate Storage Groups or be added to existing Storage Groups. For instructions on adding new Engines, see the *Avid ISIS 2000 Setup Guide*.

You can add unassigned storage Engines to a Storage Group to increase its storage capacity and bandwidth. This is typically done when adding a new Engine to your Avid ISIS system.

Redistribution is an operation that ensures all files on a Workspace are balanced evenly across the Storage Elements in the Storage Group to provide optimal file system performance. For more information, see “Redistributing Data” in the *Avid ISIS Administration Guide*. When redistributing files in a Storage Group, the redistribution applies to all Workspaces in that Storage Group. ISIS 2000 clients are permitted to read and write during an “Add” redistribution. ISIS 2000 does not support “Full” or “Remove” redistributions.

## Initialize RAID Set

When you initially install the Avid ISIS 2000 system and initialize the RAID set, it takes approximately 72 hours regardless of the Engine configuration. During this initialization, the system is functional and able to support a limited amount of client traffic. Client traffic can significantly increase the initialization time. For more information about the initialization time, see the *Avid ISIS Performance Guides*.

## Minimum ISIS 2000 Storage Space Requirement

Avid recommends that you maintain 5% of free space in each Storage Group. In other words, you should not fill Storage Group more than 95% full. Exceeding 95% used space can produce severe performance issues in some situations.

To calculate the right amount of free space, log into the ISIS management Console and navigate to the Storage Group page. For each Storage Group, multiply the Effective number by 0.05. This is your recommended free space in GBs. To make sure that your Storage Group never exceeds the recommended space, create a new workspace in this Storage Group with the same size and label it “Headroom” and do not give anyone access to this workspace.

## ISIS 2000 Client Connections

Avid ISIS 2000 systems support 200 ISIS clients using either 1 Gb, dual 1 Gb, and 10 Gb connections at any client Type setting. ISIS 2000 clients must connect through a Zone 2 or Zone 3 switch network segment port.

The ISIS 2000 includes a File Gateway function that allows an unlimited number of clients to push and pull data to and from the ISIS 2000 through a Common Internet File System (CIFS) or FTP connection without the ISIS Client Manager software.



*When the File Gateway is configured as a CIFS server, workspaces are mapped to drive letters on the File Gateway. Depending on the number of drives in the File Gateway, the maximum number of workspaces that can be shared out as a CIFS share is 22 workspaces.*

## ISIS 2000 Switches

Avid has qualified the Force10 S4810 and Cisco 4900M switches. The ISIS 2000 nearline storage is designed for workflows with your ISIS 7000 and ISIS 5500 online environments. Sample ISIS 7000 and ISIS 5500 configurations files are included in the software installer kit, see the *Qualified and Approved ISIS Switches*.

## ISIS 2000 Engine

Starting in ISIS v4.5, five Engines are supported in an ISIS 2000 configuration. New Engines can be configured as separate Storage Groups or be added to existing Storage Groups. If you add the new Engines to an existing Storage Group, a redistribution of the existing data is initiated to spread the data evenly across all drives in the Storage Group. For instructions on adding new Engines, see the *Avid ISIS 2000 Setup Guide*.



*You can mix both ISIS 2000-120 TB and ISIS 2000-240 TB Engines in the same Storage Group.*

The ISIS 2000 is not intended to be used for real time editing of high resolution material, although real time playback of resolutions of up to 3 Mb/s or less is supported.

## Moving ISIS 2000 Workspaces

The following sections list the supported methods for moving data between online (ISIS 7000 and ISIS 5500 | 5000) and nearline (ISIS 2000) Workspaces.

### Interplay Workflows

Avid Interplay v2.6 and v2.7 have been qualified in the Avid ISIS v4.5 ISIS environments. You can move assets from one ISIS system to another using Interplay workflows. The Interplay Media Services is required. Interplay workgroups with a single IP Database for multiple ISIS configurations can use the Interplay Transcode and Interplay Move services to move media. To move media between Interplay workgroup configurations, use Interplay Copy, Interplay Delivery, and Interplay Transfer.

### AirSpeed Workflows

Avid AirSpeed 5000 v2.1, AirSpeed Multi Stream v1.8.6 and AirSpeed v2.7.12 have been qualified in the Avid ISIS v4.5 ISIS environments. The AirSpeed 5000 can capture high resolution to online environments, and proxy to nearline environments (or proxy to online and high resolution on nearline). This allows you place material directly to where you need it and not have to move it.

### Editor Workflows

Editors can move clips and sequences between ISIS workspaces using the Consolidate/Transcode feature. In addition, with online and nearline workspaces mounted on a single client, you can drag files from one workspace to another.



**Moving files in an Interplay shared storage environment from a client at the file system level could be detrimental to system operations. Use Interplay Media Services applications when moving files in an Interplay shared storage environment.**

## Data Migration Utility Workflows

The Data Migration Utility can be used to move complete Workspaces between ISIS infrastructures. You can use the Data Migration utility to move Workspaces between any combination of ISIS 7500 | 7000, ISIS 5500 | 5000, and ISIS 2000 systems; this includes mirrored, RAID 6, HW RAID (ISIS 5500 RAID 5), SW RAID (ISIS 2000 RAID 6), and unprotected Workspace. For instructions on setting up and using the Data Migration Utility see the *Avid ISIS Client Guide*.

When Workspaces are migrated, the protection type is inherited from the ISIS system. For example, Workspaces migrated to ISIS 5500 inherits RAID 5 protection. Workspaces migrated to ISIS 2000 inherits RAID 6 protection. Workspaces migrated to ISIS 7500 | 7000 inherits mirrored protection by default.

## RichCopy Workflows

RichCopy is a free computer utility program developed by Microsoft to copy file directories. It performs faster than conventional copy and paste commands in the Windows operating system.

# Known Issues

The following are known issues with the Avid ISIS software.

## Client Issues

The following are known issues with the Avid ISIS v4.x client software. When a workaround exists, it appears in the paragraph directly following the issue description. The ISIS infrastructure issues are documented in the individual sections.

- On a Linux OS, right-clicking to access a context menu in the Management Console window does not work properly. The context menu does not stay open when you right-click and release the mouse button.
 

**Workaround:** Keep the right-click button applied while scrolling through the menu options.
- When installing the Client Manager on an Mac OS X v10.9 you might receive the following message: “Kernel Extension is not from an identified developer.” The Client Manager will install successfully if you continue through the install process.
- There is currently an issue with handling Final Cut Pro rendered media files. Until this issue is resolved, Avid recommends that you render to a local volume.

- After updating your Windows ISIS client software, your client might not find your ISIS infrastructure and display “Failed to open key SYSTEM\CurrentControlSet\Services\AvidFosFS\Parameters\FwProfiles” in the Logs portion of the Client Manager window.

**Workaround:** Uninstall your ISIS Client software (either through the Windows Control Panel > Programs > Programs and Features or Autorun.exe “Remove ISIS Software” selection in the menu) and reinstall the ISIS Client software again.

- The Client Manager application only supports ASCII characters in user passwords.
- If using Client Manager with a Macintosh Client on any language setting other than English, you must use the Cancel button to cancel an uninstall. Do not click the red “x” to close the client software uninstaller window. (The client software uninstaller application is located at Applications > Avid\_Uninstallers > AvidISIS).
- If you select the ISIS System Director or Engine software option from the ISIS software installer splash screen, on a Windows Vista 64 client workstation, an error indicating an application has failed might appear. This error can be safely ignored.

**Workaround:** Avoid selecting these install options on client workstations.

- When you Enable or Disable the Network Interface (the check box in the first column), and then click Apply, it forces a refresh. If you change the setting and click Apply several times in a minute, it might introduce a client system error.

**Workaround:** Restart the client by powering off the system to clear the condition.

- When using Nautilus (the default browser included with Red Hat Enterprise Linux v6.2), clients might experience long wait times browsing folders containing files that do not have a file extension.

**Workaround:** If using files without extensions, limit the number of files per folder.

- If Avid ISIS Windows clients assign a drive letter to a workspace in the Client Manager, an Avid Interplay client or virus protection software (programs running in the background) could obscure the displayed drive letter in the Client Manager window. The assigned drive letters are still mounted and fully accessible to the system, but are hidden from Client Manager's workspace list by the displayed UNC path.

If the UNC path is removed by the program running in background, your assigned drive letter re-appears.



**Workaround:** You can verify the workspace is mounted to a drive letter by confirming its presence in the My Computer window. You can also unmount the drive through the My Computer window by right clicking it and selecting Disconnect.

- If you attempt to initiate several file copies from workspace to workspace in parallel on a single client, you might experience “can not read and write” or “delayed write failure” error messages.

**Workaround:** A maximum of two parallel file copies from workspace to workspace per client is supported. Any number of files can be in a single copy.

- Windows Vista 64-bit clients with SP2 might experience a 10 to 20 second delay when accessing workspaces from Windows Explorer.

**Workaround:** Disabling the WebClient service removes the delay.

**To change the WebClient service setting:**

1. Right click My Computer and select Manage.
2. Expand Services and Applications in the left pane and click Services.
3. Right-click WebClient in the right pane and select Properties.
4. In the General tab of the WebClient window, click Stop.
5. Select Disabled in the Start-up type menu.
6. Click Apply.
7. Click OK.



*You do not need to restart the client after this change.*

- If one workspace in Client Manager is mounted by Mapping a Network drive in Windows, when you unmount the workspace and then mount a different workspace in Client Manager manually using the same drive letter, Windows Explorer displays the previous workspace name instead of the new workspace name.
- The estimated amount of space available (usually measured in an amount of time at a particular resolution) might differ between what Avid ISIS calculates and what the Avid editing system calculates.

Avid ISIS accurately reports the amount of space available for file storage.

The Avid editing application accounts for overhead in formatting of the media and is more conservative in reporting how much space is available.

- When the Final Cut Pro Scratch Disk is saved to an ISIS workspace using the Autosave Vault feature, the copies of the project in Autosave Vault folder cannot be opened with Final Cut Pro. An error message is displayed stating “File error: Wrong type.”
- When the Final Cut Pro Scratch Disk is saved to an ISIS workspace using the Autosave Vault feature, more copies are automatically saved than is set in the Autosave Vault setting.
- The Final Cut Pro “Modify > Make Offline > Move them to the Trash” option is not supported with Avid ISIS workspaces.
- Final Cut Pro v6.0.5 sometimes stops functioning if you Eject the ISIS workspace using the Final Cut Pro Open menu. When you are done using the ISIS workspace unmount the workspace using the Client Manager window.
- The Avid ISIS client bandwidth allocation feature is not supported with Final Cut Pro.
- The Macintosh Finder might display the Avid ISIS folder contents incorrectly, such as the contents of folders containing items whose name includes a pound sign (#) followed by numeric characters. For example, “project # 12” might be erroneously displayed with some items duplicated and some items missing.

**Workaround:** Avid recommends avoiding the use of names that include a pound sign (#) followed by numeric characters.

- Your Avid ISIS Macintosh Lion (v10.7.x) client might experience a kernel panic while attempting to uninstall the ISIS client software.

**Workaround:** Force the Macintosh client to restart by pressing and holding the power button until the Macintosh client powers down. Restart the Macintosh client and attempt to uninstall the client software again.

- If your Avid ISIS 10 Gb Macintosh Lion (v10.7.x) clients suddenly starts to experience delayed write failures, the Myricom driver might have switched the MTU size to 9000 or to Jumbo Frames.

**Workaround:** Verify the Myricom driver MTU setting is configured as “Standard 1500,” check the setting on the Macintosh client as follows:

1. On your Macintosh 10-Gb client, click Apple > System Preferences.
2. In the Internet & Wireless section, click Network.
3. In the left pane, select the Myricom entry and click Advanced.
4. Click the Hardware tab.

5. Select “Manually” from the Configure drop-down box to enable the MTU drop-down box.
6. Select “Standard 1500” in the MTU setting.

- If your Avid ISIS Macintosh Lion (v10.7.x) client has a Workspace mounted, the client Disk Log open, and the ISIS 5500 is restarted, you could experience a kernel panic once the ISIS 5500 is back running and you attempt to access the Disk Log.

**Workaround:** Force the Macintosh client to restart by pressing and holding the power button until the Macintosh client powers down. Restart the Macintosh client and you can continue to working where you left off.

- Do not disconnect the PCI interface cable from either a Nitris DX or Mojo DX while it is powered up on the Macintosh editing system. If Avid ISIS is running on this system and the cable is removed, the Macintosh produces a kernel panic and reports ISIS as the problem. You must power down Macintosh before removing the PCI interface cable between the Macintosh and the Nitris DX or Mojo DX. The only way to power down the Nitris DX or Mojo DX system is to shut down the client connected to it.
- If playing two streams of media during a non-symmetrical full redistribution on an Avid editor with a Nitris DX or Mojo DX attached, you will drop frames.

**Workaround:** You have the following options.

- Work with your media after the redistribution is finished.
- Start the Management Console Tool and suspend the redistribution. Finish working with your media and then resume the redistribution.



*Do not leave the redistribution in a suspended state for an extended period of time.*

- The Path Diagnostics customized setting for Posix tests does not work correctly on the Macintosh clients.

**Workaround:** Use the default option to automatically select the File Access Method instead.

## Common ISIS Infrastructure Issues

The following are known issues that could be experienced in Avid ISIS 7000, ISIS 5500, and ISIS 2000 infrastructures. When a workaround exists, it appears in the paragraph directly following the issue description.

- When accessing the Storage Manager agent using a Chrome browser, you might receive a “This web page is not available” message.

**Workaround:** Press the F5 key. The page will reload. At the “Site’s Security certificate is not trusted” window click Proceed anyway.

- When attempting to view system log files (/var/log/messages\*.gz) from the Storage Manager > Agent page > Logging tab, the Agent page stops functioning if you click View on a \*.gz file. Do not view any \*.gz logs through the Agent pages.



*To view \*.gz files use the Management Console > ISIS Toolbox > Log Aggregator and save the logs to your local computer.*

**Workaround:** Restart the Engine Agent if you have attempted to view \*.gz logs through the Agent page.

#### **To restart the agent without disrupting clients:**

1. Install PUTTY or similar SSH Client on the System Director, any client on the network, or on a system connected to the management port.  
<http://www.chiark.greenend.org.uk/~sgtatham/putty/>
2. Run SSH Client connecting to Storage Manager using an IP address listed in Management Console.
3. Login.  
Username: `root`  
Password: `<local admin password>` (Default `se-admin`)
4. Stop the Storage Manager web agent using the following command:  
`/etc/init.d/userveragent stop`
5. Wait approximately 30 seconds.
6. Restart the Storage Manager web agent using the following command:  
`/etc/init.d/userveragent start`
7. Wait approximately 30 seconds.
8. Verify the agent is running again by accessing the Management Console > Storage Manager > Agent page.
9. Close the SSH Client.

- Chinese and Korean characters are not supported in LDAP Sync Tool.

## **ISIS 7000 Infrastructure Issues**

The following are known issues with the Avid ISIS 7000 infrastructure. When a workaround exists, it appears in the paragraph directly following the issue description.

- Consistency check errors have found when playing back media that has been transcoded while on RAID 6 Workspaces. The transcoded media appears to be fine until you attempt to play it back.

Projects and bins should not be shared on a RAID 6 Workspace. To share projects and bins, store them on a mirrored Workspace.

**Workaround:** To transcode media on a RAID 6 Workspace, close the project, move the project and bin files to a local drive, perform the transcode, then move them back to the RAID 6 Workspace.



*You cannot share bins and projects when they are saved on a local drive.*

- When reading media to do a mixdown on a “Westmere” Macintosh client with the Client Type set to Low Resolution in the Client Manager > Preferences > General settings, the Macintosh client might become unresponsive.

**Workaround:** Switch Client Type setting to Medium Resolution or High Resolution.

- If the ISIS Management Console is opened from the Client Manager, and an Avid ISIS System Director failover occurs while the ISIS Management Console is open, the ISIS Management Console does not automatically reconnect to the new Active System Director.

**Workaround:** Once the Client Manager reconnects to the new Active System Director, restart the ISIS Management Console within the Client Manager to connect to the new Active System Director.

- ISIS v2.x has a install status of “Downloading” when updating the ISB and switch firmware. While in the downloading state, the blade is downloading the firmware package from the FTP Publishing service on the System Director.

If a blade is in the downloading state for more than 15 minutes, it indicates a problem retrieving the package or connecting to the FTP service.

**Workaround:** Open the Agent page for the blade and click the Statistics tab and click Network. Look for errors on either `eth0` or `eth1`. If there are errors:

- Select “offline ISB”
- If possible move the ISB to a new engine. If the problem persists, replace the ISB.
- If the ISB cannot be moved to a new engine, move it to a different slot. If the problem persists, reseal the switch associated with the network errors (`eth0` is associated with the right switch, `eth1` is associated with the left switch). If the problem persists, replace the ISB.

If no errors are displayed in the Network view of the Agent page, check cabling between the System Director and engine. Verify the FTP Publishing service is running on the System Director (right-click My Computer > Manage > Services).

- If a client has a workspace mounted and that workspace is deleted within the Management Console and then recreated using the same name, the mounted workspace becomes inaccessible to the client, although it displays a green icon within Client Manager indicating that it is still accessible.

**Workaround:** To access that workspace again, unmount the workspace using the client manager and then mount it again.

- When attempting to consolidate media from an Avid editing client on a RAID workspace that has a failed ISB, the consolidate function in the editing application might fail with an Exception error.

**Workaround:** If the ISB failure cannot be repaired within your time frame, retry the consolidation again. The failure is intermittent.

- When the maximum number of licensed users are logged in to the Avid ISIS environment and another client attempts to log in, a “User authentication failed” error is displayed.

The message should state that the maximum number of licenses has been reached.

- Deleting an ISS from a stack does not clear the engine configuration.

Use the Reset Factory defaults button to clear stack configuration information.

- When in the Advanced tab of the Switch Agent page, if you select Switch Blade > “Reset to factory defaults” and enter the password to confirm the reset, one of the two switches in the engine becomes the master and the other switch keeps restarting.

**Workaround:** Log into the ISS Agent on the new master, click the System tab and select Basic, then click Submit in the Chassis Configuration window.

- If a redistribution stops after a Storage Element has failed, it can indicate that the system is trying to fix parity blocks that no longer exist.

**Workaround:** Suspend and resume an in-progress redistribution to do a Block Rectify, using the Advanced Commands options available on the Workspaces page. The following steps are summarized. For detailed instructions, see the *Avid ISIS Administration Guide*.



**Do not allow the RAID 6 redistribution to stay suspended for indefinite periods of time. Once the rectify completes, immediately resume the redistributions across all Workspaces.**

**To suspend a redistribution and rectify blocks:**

1. Suspend a redistribution: Management Console > Workspaces > Advanced Commands and select Suspend Redistribution.
2. Rectify files: Management Console > Storage Elements > Command and select Initiate Block Rectify.
3. Resume the redistribution: Management Console > Workspaces > Advanced Commands and select Resume Redistribution.

**ISIS 5500 | 5000 Infrastructure Issues**

The following are known issues with the Avid ISIS 5500 | 5000 infrastructure. When a workaround exists, it appears in the paragraph directly following the issue description.

- If your Avid ISIS experiences a fatal error to a blue screen, press and hold the power button until the system powers off and then power on the system again.
- When you make any changes in the storage group Details pane and click Close, you are asked if you would like to save your changes. If you click Yes, your changes are not saved. You must re-apply the changes and click Apply before you click Close.

**Workaround:** Always click Apply before you click Close.

- If there is a power failure with no spare data drive, an assert error could appear in the Windows System Event logs similar to the following.

```
Assert Error from .\FScommLayer.cpp MAX_RESPONSE_SIZE
```

**Workaround:** The System Director typically stops and automatically restarts but if it does not, power off the System Director and then restart it.

**File Gateway Issues**

The following are known issues with the Avid File Gateway. When a workaround exists, it appears in the paragraph directly following the issue description.

- In the File Gateway Configuration Editor, if you enter a user name that contains a space, the part of the user name that follows the space will not be displayed in the User List after saving the configuration.
- The Avid ISIS File Gateway does not support Macintosh Common Internet File System (CIFS) clients that have non-ASCII user names (including Asian and Diacritical characters). An error occurs on the Macintosh client indicating you have an incorrect URL.

- Macintosh CIFS Clients connected to the Avid ISIS File Gateway clients using the Terminal application hang when attempting to create a filename with invalid characters. Invalid characters are as follows:

? \* < > | : " \ /

This hang occurs on Mac OS 10.6.2 and later.

**Workaround:** You must force quit or restart the Macintosh Finder to clear the copy dialog box.

- If copying between the Avid ISIS File Gateway and a Macintosh CIFS client and the “share name” is renamed in the configuration file (on File Gateway server), the copy operation on the Macintosh client gets interrupted with an appropriate error message. Clicking OK closes the error message but the copy dialog remains displayed although nothing is being copied. Clicking cancel on the copy dialog also does not close the dialog box. The CIFS share cannot be ejected since it still appears to be in use.

**Workaround:** You must force quit or restart the Macintosh Finder to clear the copy dialog box.

- When ISIS File Gateway clients map ISIS Workspaces to their client systems, the Used and Free space values displayed in the Windows Properties window and the Macintosh Get Info window are not accurate.



## Legal Notices

Product specifications are subject to change without notice and do not represent a commitment on the part of Avid Technology, Inc.

This product is subject to the terms and conditions of a software license agreement provided with the software. The product may only be used in accordance with the license agreement.

This product may be protected by one or more U.S. and non-U.S. patents. Details are available at [www.avid.com/patents](http://www.avid.com/patents).

This product includes software developed by the OpenSSL Project for use in the OpenSSL Toolkit (<http://www.openssl.org/>).

Part of the software embedded in this product is gSOAP software.

Portions created by gSOAP are Copyright (C) 2001-2009 Robert A. van Engelen, Genivia inc. All Rights Reserved.

THE SOFTWARE IN THIS PRODUCT WAS IN PART PROVIDED BY GENIVIA INC AND ANY EXPRESS OR IMPLIED WARRANTIES, INCLUDING, BUT NOT LIMITED TO, THE IMPLIED WARRANTIES OF MERCHANTABILITY AND FITNESS FOR A PARTICULAR PURPOSE ARE DISCLAIMED. IN NO EVENT SHALL THE AUTHOR BE LIABLE FOR ANY DIRECT, INDIRECT, INCIDENTAL, SPECIAL, EXEMPLARY, OR CONSEQUENTIAL DAMAGES (INCLUDING, BUT NOT LIMITED TO, PROCUREMENT OF SUBSTITUTE GOODS OR SERVICES; LOSS OF USE, DATA, OR PROFITS; OR BUSINESS INTERRUPTION) HOWEVER CAUSED AND ON ANY THEORY OF LIABILITY, WHETHER IN CONTRACT, STRICT LIABILITY, OR TORT (INCLUDING NEGLIGENCE OR OTHERWISE) ARISING IN ANY WAY OUT OF THE USE OF THIS SOFTWARE, EVEN IF ADVISED OF THE POSSIBILITY OF SUCH DAMAGE.

The following disclaimer is required by Apple Computer, Inc.:

APPLE COMPUTER, INC. MAKES NO WARRANTIES WHATSOEVER, EITHER EXPRESS OR IMPLIED, REGARDING THIS PRODUCT, INCLUDING WARRANTIES WITH RESPECT TO ITS MERCHANTABILITY OR ITS FITNESS FOR ANY PARTICULAR PURPOSE. THE EXCLUSION OF IMPLIED WARRANTIES IS NOT PERMITTED BY SOME STATES. THE ABOVE EXCLUSION MAY NOT APPLY TO YOU. THIS WARRANTY PROVIDES YOU WITH SPECIFIC LEGAL RIGHTS. THERE MAY BE OTHER RIGHTS THAT YOU MAY HAVE WHICH VARY FROM STATE TO STATE.

The following disclaimer is required by Sam Leffler and Silicon Graphics, Inc. for the use of their TIFF library:

Copyright © 1988–1997 Sam Leffler  
Copyright © 1991–1997 Silicon Graphics, Inc.

Permission to use, copy, modify, distribute, and sell this software [i.e., the TIFF library] and its documentation for any purpose is hereby granted without fee, provided that (i) the above copyright notices and this permission notice appear in all copies of the software and related documentation, and (ii) the names of Sam Leffler and Silicon Graphics may not be used in any advertising or publicity relating to the software without the specific, prior written permission of Sam Leffler and Silicon Graphics.

THE SOFTWARE IS PROVIDED "AS-IS" AND WITHOUT WARRANTY OF ANY KIND, EXPRESS, IMPLIED OR OTHERWISE, INCLUDING WITHOUT LIMITATION, ANY WARRANTY OF MERCHANTABILITY OR FITNESS FOR A PARTICULAR PURPOSE.

IN NO EVENT SHALL SAM LEFFLER OR SILICON GRAPHICS BE LIABLE FOR ANY SPECIAL, INCIDENTAL, INDIRECT OR CONSEQUENTIAL DAMAGES OF ANY KIND, OR ANY DAMAGES WHATSOEVER RESULTING FROM LOSS OF USE, DATA OR PROFITS, WHETHER OR NOT ADVISED OF THE POSSIBILITY OF DAMAGE, AND ON ANY THEORY OF LIABILITY, ARISING OUT OF OR IN CONNECTION WITH THE USE OR PERFORMANCE OF THIS SOFTWARE.

The following disclaimer is required by the Independent JPEG Group:

This software is based in part on the work of the Independent JPEG Group.

This Software may contain components licensed under the following conditions:

Copyright (c) 1989 The Regents of the University of California. All rights reserved.

Redistribution and use in source and binary forms are permitted provided that the above copyright notice and this paragraph are duplicated in all such forms and that any documentation, advertising materials, and other materials related to such distribution and use acknowledge that the software was developed by the University of California, Berkeley. The name of the University may not be used to endorse or promote products derived from this software without specific prior written permission. THIS SOFTWARE IS PROVIDED "AS IS" AND WITHOUT ANY EXPRESS OR IMPLIED WARRANTIES, INCLUDING, WITHOUT LIMITATION, THE IMPLIED WARRANTIES OF MERCHANTABILITY AND FITNESS FOR A PARTICULAR PURPOSE.

Copyright (C) 1989, 1991 by Jef Poskanzer.

Permission to use, copy, modify, and distribute this software and its documentation for any purpose and without fee is hereby granted, provided that the above copyright notice appear in all copies and that both that copyright notice and this permission notice appear in supporting documentation. This software is provided "as is" without express or implied warranty.

Copyright 1995, Trinity College Computing Center. Written by David Chappell.

Permission to use, copy, modify, and distribute this software and its documentation for any purpose and without fee is hereby granted, provided that the above copyright notice appear in all copies and that both that copyright notice and this permission notice appear in supporting documentation. This software is provided "as is" without express or implied warranty.

Copyright 1996 Daniel Dardailler.

Permission to use, copy, modify, distribute, and sell this software for any purpose is hereby granted without fee, provided that the above copyright notice appear in all copies and that both that copyright notice and this permission notice appear in supporting documentation, and that the name of Daniel Dardailler not be used in advertising or publicity pertaining to distribution of the software without specific, written prior permission. Daniel Dardailler makes no representations about the suitability of this software for any purpose. It is provided "as is" without express or implied warranty.

Modifications Copyright 1999 Matt Koss, under the same license as above.

Copyright (c) 1991 by AT&T.

Permission to use, copy, modify, and distribute this software for any purpose without fee is hereby granted, provided that this entire notice is included in all copies of any software which is or includes a copy or modification of this software and in all copies of the supporting documentation for such software.

THIS SOFTWARE IS BEING PROVIDED "AS IS", WITHOUT ANY EXPRESS OR IMPLIED WARRANTY. IN PARTICULAR, NEITHER THE AUTHOR NOR AT&T MAKES ANY REPRESENTATION OR WARRANTY OF ANY KIND CONCERNING THE MERCHANTABILITY OF THIS SOFTWARE OR ITS FITNESS FOR ANY PARTICULAR PURPOSE.

This product includes software developed by the University of California, Berkeley and its contributors.

The following disclaimer is required by Paradigm Matrix:

Portions of this software licensed from Paradigm Matrix.

The following disclaimer is required by Ray Sauers Associates, Inc.:

"Install-It" is licensed from Ray Sauers Associates, Inc. End-User is prohibited from taking any action to derive a source code equivalent of "Install-It," including by reverse assembly or reverse compilation, Ray Sauers Associates, Inc. shall in no event be liable for any damages resulting from reseller's failure to perform reseller's obligation; or any damages arising from use or operation of reseller's products or the software; or any other damages, including but not limited to, incidental, direct, indirect, special or consequential Damages including lost profits, or damages resulting from loss of use or inability to use reseller's products or the software for any reason including copyright or patent infringement, or lost data, even if Ray Sauers Associates has been advised, knew or should have known of the possibility of such damages.

The following disclaimer is required by Videomedia, Inc.:

"Videomedia, Inc. makes no warranties whatsoever, either express or implied, regarding this product, including warranties with respect to its merchantability or its fitness for any particular purpose."

"This software contains V-LAN ver. 3.0 Command Protocols which communicate with V-LAN ver. 3.0 products developed by Videomedia, Inc. and V-LAN ver. 3.0 compatible products developed by third parties under license from Videomedia, Inc. Use of this software will allow "frame accurate" editing control of applicable videotape recorder decks, videodisc recorders/players and the like."

The following disclaimer is required by Altura Software, Inc. for the use of its Mac2Win software and Sample Source Code:

©1993–1998 Altura Software, Inc.

The following disclaimer is required by Ultimatte Corporation:

Certain real-time compositing capabilities are provided under a license of such technology from Ultimatte Corporation and are subject to copyright protection.

The following disclaimer is required by 3Prong.com Inc.:

Certain waveform and vector monitoring capabilities are provided under a license from 3Prong.com Inc.

The following disclaimer is required by Interplay Entertainment Corp.:

The "Interplay" name is used with the permission of Interplay Entertainment Corp., which bears no responsibility for Avid products.

This product includes portions of the Alloy Look & Feel software from Incors GmbH.

This product includes software developed by the Apache Software Foundation (<http://www.apache.org/>).

© DevelopMentor

This product may include the JCifs library, for which the following notice applies:

JCifs © Copyright 2004. The JCIFS Project, is licensed under LGPL (<http://jcifs.samba.org/>). See the LGPL.txt file in the Third Party Software directory on the installation CD.

Avid Interplay contains components licensed from LavanTech. These components may only be used as part of and in connection with Avid Interplay.

#### Attn. Government User(s). Restricted Rights Legend

U.S. GOVERNMENT RESTRICTED RIGHTS. This Software and its documentation are "commercial computer software" or "commercial computer software documentation." In the event that such Software or documentation is acquired by or on behalf of a unit or agency of the U.S. Government, all rights with respect to this Software and documentation are subject to the terms of the License Agreement, pursuant to FAR §12.212(a) and/or DFARS §227.7202-1(a), as applicable.

#### Trademarks

003, 192 Digital I/O, 192 I/O, 96 I/O, 96i I/O, Adrenaline, AirSpeed, ALEX, Alienbrain, AME, AniMatte, Archive, Archive II, Assistant Station, AudioPages, AudioStation, AutoLoop, AutoSync, Avid, Avid Active, Avid Advanced Response, Avid DNA, Avid DNxcel, Avid DNxHD, Avid DS Assist Station, Avid Ignite, Avid Liquid, Avid Media Engine, Avid Media Processor, Avid MEDIArray, Avid Mojo, Avid Remote Response, Avid Unity, Avid Unity ISIS, Avid VideoRAID, AvidRAID, AvidShare, AVIDstripe, AVX, Beat Detective, Beauty Without The Bandwidth, Beyond Reality, BF Essentials, Bomb Factory, Bruno, C|24, CaptureManager, ChromaCurve, ChromaWheel, Cineractive Engine, Cineractive Player, Cineractive Viewer, Color Conductor, Command|24, Command|8, Control|24, Cosmonaut Voice, Countdown, d2, d3, DAE, D-Command, D-Control, Deko, DekoCast, D-Fi, D-fx, Digi 002, Digi 003, DigiBase, Digidesign, Digidesign Audio Engine, Digidesign Development Partners, Digidesign Intelligent Noise Reduction, Digidesign TDM Bus, DigiLink, DigiMeter, DigiPanner, DigiProNet, DigiRack, DigiSerial, DigiSnake, DigiSystem, Digital Choreography, Digital Nonlinear Accelerator, DigiTest, DigiTranslator, DigiWear, DINR, DNxchange, Do More, DPP-1, D-Show, DSP Manager, DS-StorageCalc, DV Toolkit, DVD Complete, D-Verb, Eleven, EM, Euphonix, EUCON, EveryPhase, Expander, ExperRender, Fader Pack, Fairchild, FastBreak, Fast Track, Film Cutter, FilmScribe, Flexevent, FluidMotion, Frame Chase, FXDeko, HD Core, HD Process, HDpack, Home-to-Hollywood, HYBRID, HyperSPACE, HyperSPACE HDCAM, iKnowledge, Image Independence, Impact, Improv, iNEWS, iNEWS Assign, iNEWS ControlAir, InGame, Instantwrite, Instinct, Intelligent Content Management, Intelligent Digital Actor Technology, IntelliRender, Intelli-Sat, Intelli-sat Broadcasting Recording Manager, InterFX, Interplay, inTONE, Intraframe, iS Expander, iS9, iS18, iS23, iS36, ISIS, IsoSync, LaunchPad, LeaderPlus, LFX, Lightning, Link & Sync, ListSync, LKT-200, Lo-Fi, MachineControl, Magic Mask, Make Anything Hollywood, make manage move | media, Marquee, MassivePack, Massive Pack Pro, Maxim, Mbox, Media Composer, MediaFlow, MediaLog, MediaMix, Media Reader, Media Recorder, MEDIArray, MediaServer, MediaShare, MetaFuze, MetaSync, MIDI I/O, Mix Rack, Moviestar, MultiShell, NaturalMatch, NewsCutter, NewsView, NewsVision, Nitris, NL3D, NLP, NSDOS, NSWIN, OMF, OMF Interchange, OMM, OnDVD, Open Media Framework, Open Media Management, Painterly Effects, Palladium, Personal Q, PET, Podcast Factory, PowerSwap, PRE, ProControl, ProEncode, Profiler, Pro Tools, Pro Tools|HD, Pro Tools LE, Pro Tools M-Powered, Pro Transfer, QuickPunch, QuietDrive, Realtime Motion Synthesis, Recti-Fi, Reel Tape Delay, Reel Tape Flanger, Reel Tape Saturation, Reprise, Res Rocket Surfer, Reso, RetroLoop, Reverb One, ReVibe, Revolution, rS9, rS18, RTAS, Salesview, Sci-Fi, Scorch, ScriptSync, SecureProductionEnvironment, Serv|GT, Serv|LT, Shape-to-Shape, ShuttleCase, Sibelius, SimulPlay, SimulRecord, Slightly Rude Compressor, Smack!, Soft SampleCell, Soft-Clip Limiter, SoundReplacer, SPACE, SPACEShift, SpectraGraph, SpectraMatte, SteadyGlide, Streamfactory, Streamgenie, StreamRAID, SubCap, Sundance, Sundance Digital, SurroundScope, Symphony, SYNC HD, SYNC I/O, Synchronic, SynchroScope, Syntax, TDM FlexCable, TechFlix, Tel-Ray, Thunder, TimeLiner, Titansync, Titan, TL Aggro, TL AutoPan, TL Drum Rehab, TL Everyphase, TL Fauxlder, TL In Tune, TL MasterMeter, TL Metro, TL Space, TL Utilities, tools for storytellers, Transit, TransJammer, Trillium Lane Labs, TruTouch, UnityRAID, Vari-Fi, Video the Web Way, VideoRAID, VideoSPACE, VTEM, Work-N-Play, Xdeck, X-Form, Xmon and XPAND! are either registered trademarks or trademarks of Avid Technology, Inc. in the United States and/or other countries.

Adobe and Photoshop are either registered trademarks or trademarks of Adobe Systems Incorporated in the United States and/or other countries. Apple and Macintosh are trademarks of Apple Computer, Inc., registered in the U.S. and other countries. Autodesk, AutoCAD, HumanIK, Maya, MotionBuilder, Revit, and 3ds Max are registered trademarks or trademarks of Autodesk, Inc., and/or its subsidiaries and/or affiliates in the USA and/or other countries. Chelsio Communications and the Chelsio logo, and combinations thereof, are trademarks of Chelsio Communications, Inc. Cisco and Catalyst are registered trademarks of Cisco in the United States and certain other countries. Dell and Dell Precision are trademarks or registered trademarks of Dell Computer Corporation. Force10 and Force10 Networks are registered trademarks of Force10 Networks, Inc. HP is a registered trademark of Hewlett-Packard Company. Intel is a registered trademark of Intel Corporation. Windows is either a registered trademark or trademark of Microsoft Corporation in the United States and/or other countries. All other trademarks contained herein are the property of their respective owners.

Avid ISIS Version 4.6.1.1 ReadMe • 0175-31144-00 Rev. D • April 21, 2014