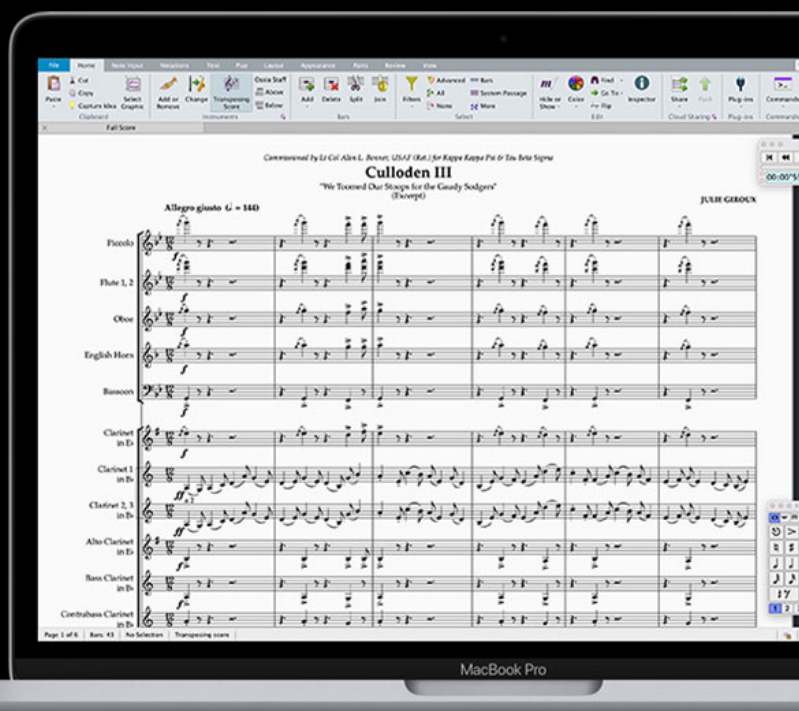




What's New in Sibelius

version 2023.8



Legal Notices

© 2023 Avid Technology, Inc., ("Avid"), all rights reserved. This guide may not be duplicated in whole or in part without the written consent of Avid.

For a current and complete list of Avid trademarks visit: www.avid.com/legal/trademarks-and-other-notice

Bonjour, the Bonjour logo, and the Bonjour symbol are trademarks of Apple Computer, Inc.

Thunderbolt and the Thunderbolt logo are trademarks of Intel Corporation in the U.S. and/or other countries.

This product may be protected by one or more U.S. and non-U.S. patents. Details are available at www.avid.com/patents.

Product features, specifications, system requirements, and availability are subject to change without notice.

Guide Part Number 9329-66503-00 REV A 08/23

Contents

- Introduction 1
 - New Features and Improvements in Sibelius 2023.8 1
 - New Features and Improvements in Sibelius 2023.6 1
 - New Features and Improvements in Sibelius 2023.5 1
 - New Features and Improvements in Sibelius 2023.2 1
 - System Requirements and Compatibility Information 1
 - Conventions Used in Sibelius Documentation 3
 - Resources 4
- New Features and Improvements in Sibelius 2023.8 6
 - “Enhanced” Redo 6
- New Features and Improvements in Sibelius 2023.6 8
 - Automatic Chord Completion 8
- New Features and Improvements in Sibelius 2023.5 11
 - Hide or Show Notes in Chords 11
 - Keyboard Shortcuts Enhancements 14
- New Features and Improvements in Sibelius 2023.2 16
 - Independent Layout Marks and Note Spacing in Score Subsets 16
 - Improvements for Tuplets 16
 - Dynamic Guitar Staves Improvements 17
 - ManuScript Language Improvements 18

Introduction

New Features and Improvements in Sibelius 2023.8

Sibelius 2023.8 provides the following new features, changes, and improvements:

- “Enhanced” Redo to redo the last command or action.

New Features and Improvements in Sibelius 2023.6

Sibelius 2023.6 provides the following new features, changes, and improvements:

- Automatic chord completion for chord symbol entry

New Features and Improvements in Sibelius 2023.5

Sibelius 2023.5 provides the following new features, changes, and improvements:

- Hide individual notes in chords in the full score and Dynamic Parts
- Keyboard Shortcuts enhancements:
 - Export list of Keyboard Shortcuts
 - Search Keyboard Shortcuts

New Features and Improvements in Sibelius 2023.2

Sibelius 2023.2 provides the following new features, changes, and improvements:

- Independent Layout Marks and Note Spacing in Score Subsets
- Improvements for Tuplets
- Move objects on staves without affecting other staves with Dynamic Guitar Staves
- Manuscript language improvements

System Requirements and Compatibility Information

Avid® can only assure compatibility and provide support for hardware and software it has tested and approved.

For complete system requirements and a list of qualified computers, operating systems, hard drives, and third-party devices, visit:
www.avid.com/compatibility

Version Compatibility

Sibelius 2019.9 was the last version of Sibelius to support macOS 10.10 “Yosemite” and macOS X 10.11 “El Capitan,” and Sibelius 2022.12 was the last version of Sibelius to support macOS 10.12 “Sierra.” It is recommended that you upgrade to macOS 10.13 “High Sierra” or later to maintain compatibility with current versions of Sibelius.

We recommend that you upgrade to Windows 10 or later to maintain compatibility with current versions of Sibelius. To find out more about migrating to Windows 10, visit www.microsoft.com.

If you are using an older version of Sibelius and are upgrading to macOS “Catalina” or Windows 10, we recommend that you upgrade and stay current with the latest version Sibelius as well.

Conventions Used in Sibelius Documentation

Sibelius documentation uses the following conventions to indicate menu choices, keyboard commands, and mouse commands:

Convention	Action
File > Save	Choose Save from the File tab
Control+N	Hold down the Control key and press the N key
Control-click	Hold down the Control key and click the mouse button
Right-click	Click with the right mouse button

The names of Commands, Options, and Settings that appear on-screen are in a different font.

The following symbols are used to highlight important information:



User Tips are helpful hints for getting the most from Sibelius.



Important Notices include information that could affect data or the performance of Sibelius.



Shortcuts show you useful keyboard or mouse shortcuts.



Cross References point to related sections in this guide and other Avid documentation.

How to Use this PDF Guide

This PDF provides the following useful features:

- The Bookmarks on the left serve as a continuously visible table of contents. Click on a subject heading to jump to that page.
- Click a + symbol to expand that heading to show subheadings. Click the – symbol to collapse a subheading.
- The Table of Contents provides active links to their pages. Select the hand cursor, allow it to hover over the heading until it turns into a finger. Then click to locate to that subject and page.
- All cross references in **blue** are active links. Click to follow the reference.
- Select Find from the Edit menu to search for a subject.
- When viewing this PDF on an iPad, it is recommended that you open the file using iBooks to take advantage of active links within the document. When viewing the PDF in Safari, touch the screen, then touch Open in “iBooks”.

Resources

The Avid website (www.avid.com) is your best online source for information to help you get the most out of Sibelius.

Account Activation

Create an Avid Master Account at:

www.avid.com/account

Product Registration

Register your purchase online at:

www.avid.com/register

Product Downloads

Download software, updates, documentation, and other resources from:

my.avid.com/products

Support and Downloads

Contact Avid Customer Success (technical support), download software updates and the latest online manuals, browse the Compatibility documents for system requirements, search the online Knowledge Base or join the worldwide Avid user community on the User Conference.

www.avid.com/support

Get Started Fast

Visit the Get Started Fast with Sibelius YouTube channel.

[Get Started Fast with Sibelius](#)

Training and Education

Study on your own using courses available online, find out how you can learn in a classroom setting at an Avid-certified training center, or view video tutorials and webinars.

www.avid.com/education

Products and Developers

Learn about Avid products, download demo software, or learn about our Development Partners and their plug-ins, applications, and hardware.

www.avid.com/products


New Features and Improvements in Sibelius 2023.8

“Enhanced” Redo

The Redo command can now be used to repeat the previous command or action.

To redo the previous command or action, do one of the following:

- Click the Redo icon.
- Press Command+Y (Mac) or Control+Y (Windows).

 *Redoing a previous command only works if the Redo history is empty. Also note that here are a few commands that are excluded, most significantly Selection actions and mouse drag actions. These are part of the Undo/Redo history, but not part of repeat last command or action functionality.*

New Features and Improvements in Sibelius 2023.6

Automatic Chord Completion

(Sibelius Ultimate and Artist Only)

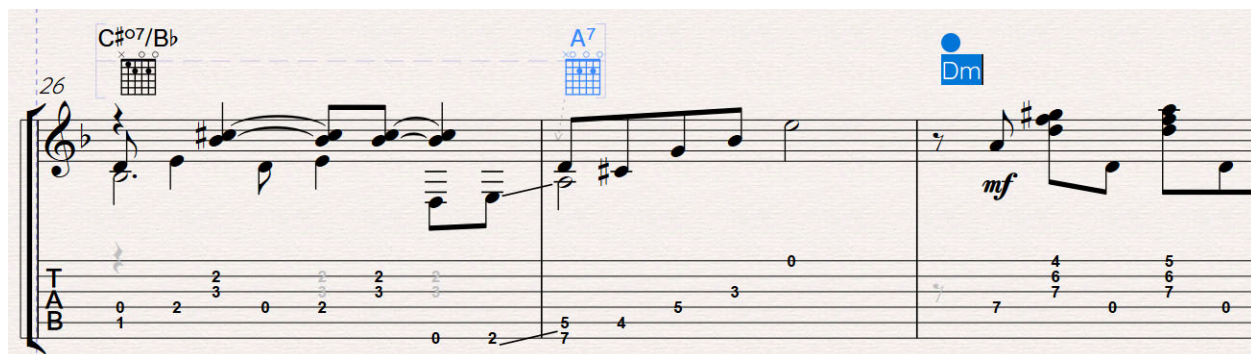
Sibelius now provides the option for automatic chord completion for chord symbols. When entering chords in Sibelius, you are presented with the best possible chord match for the music at that point in your score. You can choose the suggested chord (or chords) or enter a chord symbol manually, as you see fit, and then move on.

Sibelius uses built-in AI technology that contains a data model trained on several datasets of classical music. When entering a chord symbol, the surrounding music is sent to the AI model for analysis to determine the most likely chord options. In cases where the confidence of the model is sufficiently high, only the most likely chord is suggested. Where there are multiple harmonic possibilities analyzed, Sibelius offers multiple chord options to choose from, starting with the most likely.

💡 *Similar to AI-assisted auto-complete features you already use in your daily life, such as whether you see the next word while you write a text message on your phone, or see a possible completion to the sentence you're writing in an email. Sibelius's chord suggestions are similar to these, where it "looks" at the music and suggests the most suitable chord.*

Chord Entry

The way you enter chords has not changed: select a note, and press Command+K (Mac) or Control+K (Windows) to enter a chord symbol (Text > Chord Symbols). What is new is that Sibelius quickly analyzes the music and suggests chord symbols where appropriate.



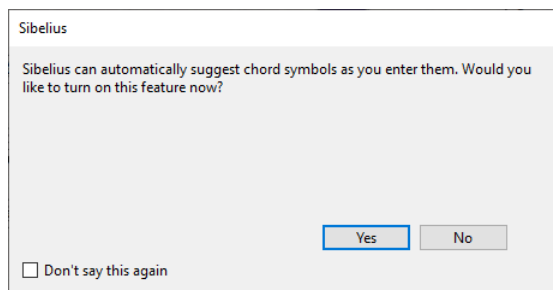
Chord Auto-Completion

💡 *The AI model has been trained on several datasets of public domain music, including music by Beethoven, Haydn, Mozart, and Bach, with smaller sets that include music by Reger, Rimsky-Korsakov, and Tchaikovsky.*

To enter chord symbols using automatic chord completion:


- 1 Select a note or chord.
- 2 Do one of the following:
 - Choose Text > Chord Symbols and click Chord Symbol.
 - Press Command+K (Mac) or Control+K (Windows).

- 3 The first time you add a chord symbol in any score, you are prompted to use automatic chord completion.



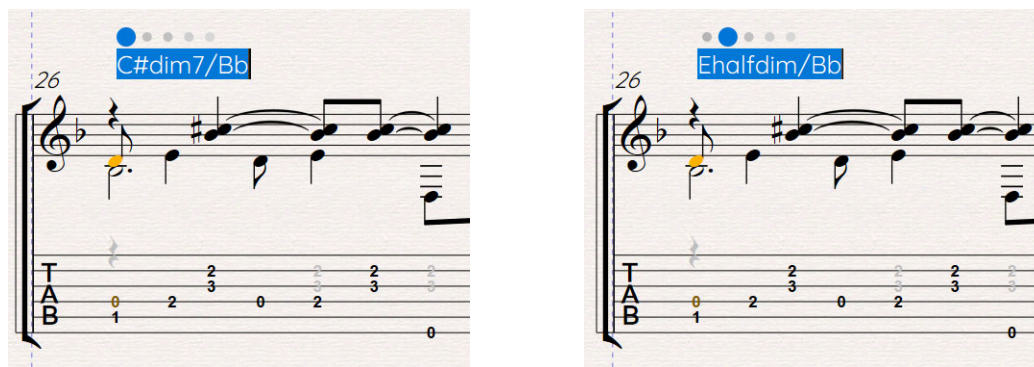
Use Chord Symbol suggestions?

- 4 Click **Yes** (you can change this in the Sibelius Preferences for the score any time).
- 5 The most likely chord is suggested. If more than one chord is possible, each possible chord is suggested in the order of confidence of the AI model (see below).
- 6 Do one of the following:
- If more than one chord is suggested, press **Command+K** (Mac) or **Control+K** (Windows) to cycle through the suggested chords.
 - Press **Esc** to add the chord and exit chord symbol entry.
 - Press **Tab** to add the chord and move to the next bar.
 - Press the **Spacebar** to add the chord and move to the next note.

 *Make a selection and press tab repeatedly. Suggested chord symbols appear above the selected notes each time you press tab. This is especially useful for lead sheet work or adding chord symbols to a piano/vocal score.*

Multiple Suggested Chords

Where there could be more than one possible chord, Sibelius offers a number of options to choose from, starting with the most likely. Press **Ctrl+K** or **Cmd+K** to cycle through them, then press **Space** or **Tab** to move to the next note or bar.



First-best chord option (left); second-best chord option (right)

Auto Completion Preferences

Sibelius provides two new preferences for Chord Auto Completion (File > Preferences > Other > Chord Symbols).

Chord Symbol Suggestions

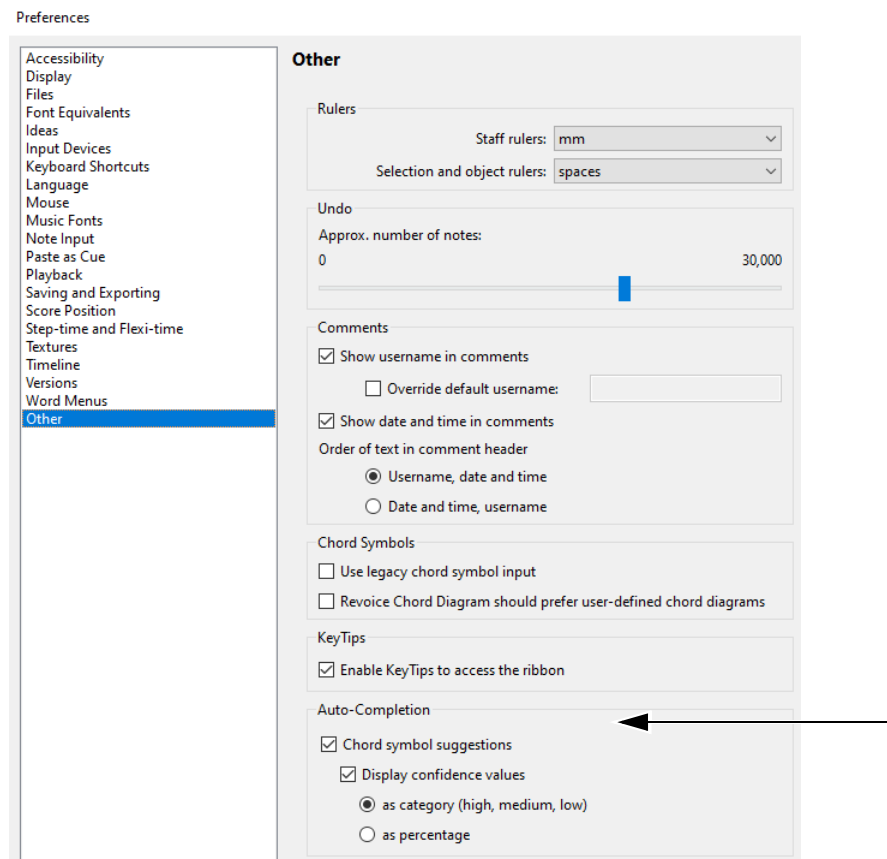
Select this option to enable Auto-Completion for Chord Symbols. Deselect to disable to Auto-Completion for Chord Symbols.

Display Confidence Values

Enable this option to display the level of confidence in the chord symbol suggestion (from low to hi). This option is disabled by default.

As Category (High, Medium, Low) Choose to display confidence level as High, Medium, or Low.

As Percentage Choose to display confidence level as a percentage.



Auto-Completion options in the Sibelius preferences



Confidence shown: High (left), Low (middle), percentage (right)


New Features and Improvements in Sibelius 2023.5

Hide or Show Notes in Chords

Sibelius now lets you hide (or show) individual notes in chords in the full score and Dynamic Parts while maintaining all articulation, dynamics, and lines for the remaining notes shown in the chord.

To hide a note:

- 1 Select the note you want to hide.
- 2 Do one of the following:
 - Go to Home > Edit > Hide or Show.
 - Type Hide into Command Search
 - Toggle the visibility in the Inspector (on desktop).
 - Press Command+Shift+H (Mac) or Control+Shift+H (Windows).

 *Files saved in 2023.5 and later cannot be opened in 2023.3.1 and earlier without exporting the file as a previous version.*

New Reset All Note Spacing Command

Sibelius lets you hide passages in parts, so that you can create individual parts for players. The new command **Reset All Note Spacing** resets note spacing while taking into account hidden objects. The existing **Reset Note Spacing** command resets the spacing shown notes only.

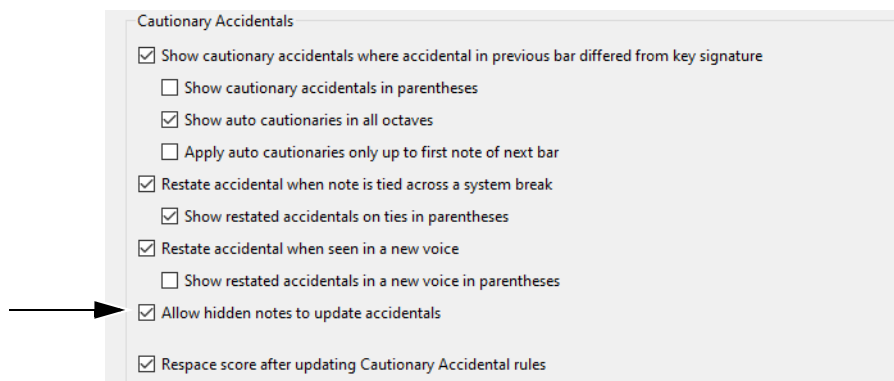
To reset note spacing while taking hidden objects into account:

- 1 Select the passage you want to respace.
- 2 Type Reset All Note Spacing in the Command Search field.

New Preferences and Engraving Rules for Hidden Notes

Accidentals

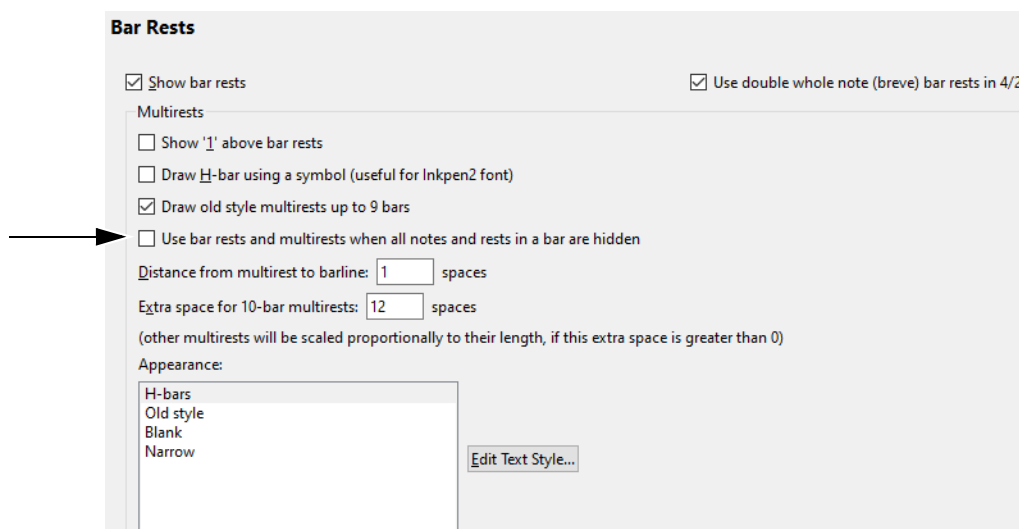
Accidentals update notes later in the bar when notes are hidden. You can enable or disable the **Allow hidden notes to update accidentals** option on the **Accidentals and Dots** page of **Appearance > House Style > Engraving Rules**.



Allow hidden notes to update accidentals option

Use Bar Rests and Multirests When All Notes and Rests in a Bar Are Hidden

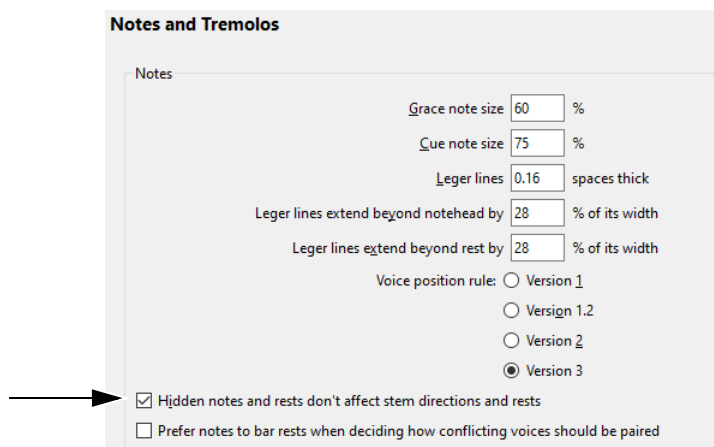
The Use bar rests and multirests when all notes and rests in a bar are hidden option on the Bar Rests page of Appearance > House Style > Engraving Rules lets you choose whether or not Dynamic Parts should show empty bars or bar rests and multirests (“multi-measure rests”). When this option is enabled, any series of bars containing only hidden notes or rests, or with whole bar rests use multirests. For example, this ensures that solo passages in one part will be hidden in another part and uses multirests instead of a series of empty bars.



Use bar rests and multirests when all notes and rests in a bar are hidden option

Stem Directions and Rests

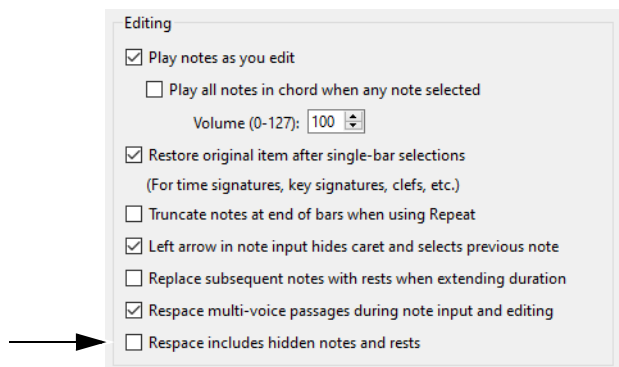
You can enable or disable the Hidden notes and rests don't affect stem directions and rests option on the Notes and Tremolos page of Appearance > House Style > Engraving Rules.



Hidden notes and rests don't affect stem directions and rests option

Respace Includes Hidden Notes and Rests

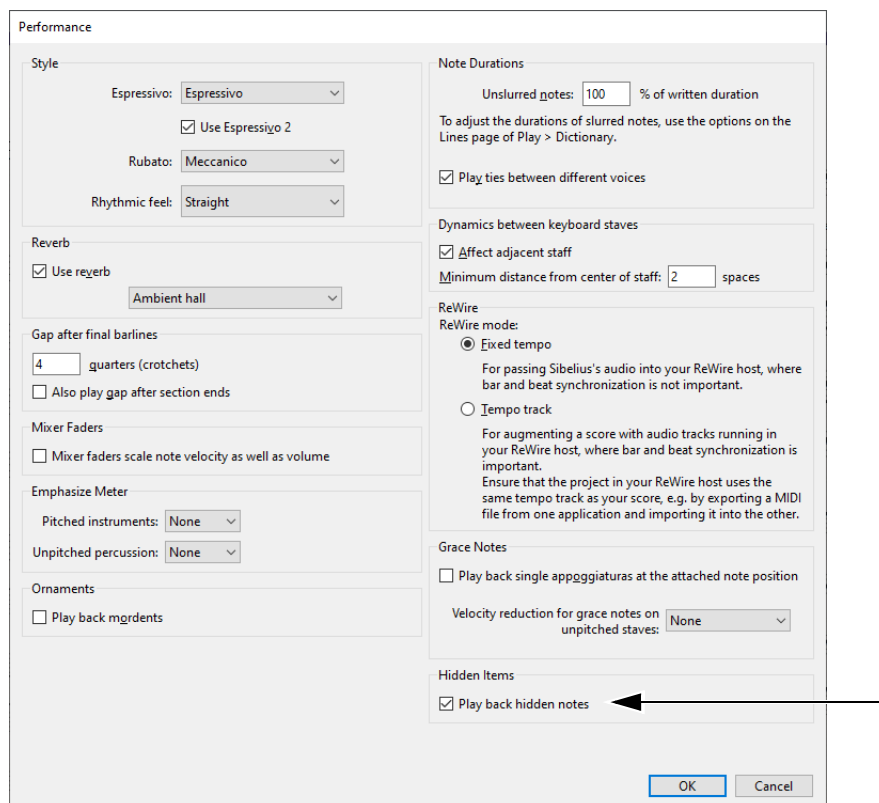
Respace includes hidden notes and rests (File > Preferences > Note Input under “Editing”) controls how music is re-spaced when editing and entering music. As a rule, Sibelius takes into account everything around the music to give you the best spacing possible. However, for example, you may want to use a row of hidden rests in another voice to force the spacing you want.



Respace includes hidden notes and rests option

New Playback Option

The new Play back hidden notes option (Play > Interpretation > Performance > Hidden Items) determines whether hidden notes play back. It is off by default, but you may want to enable it if you have written out Jazz solos in slash notation or other music that you want to hide but still want to hear on playback. It also allows for playback workarounds such as written out ornaments in a hidden voice.



Performance options: Play back hidden notes enabled

ManuScript Language Enhancements

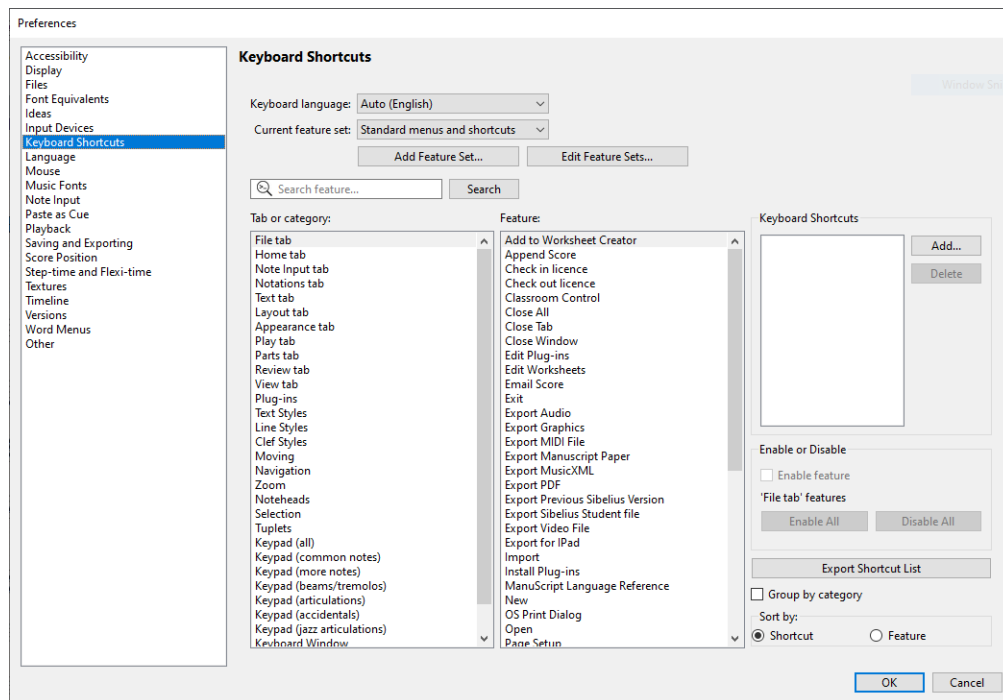
(Sibelius Ultimate Only)

The ManuScript language now include the objects `n.Hidden` for hidden notes and `nr.Hidden` for hidden note rests. Each returns as either `True` or `False`.

Keyboard Shortcuts Enhancements

Export List of Keyboard Shortcuts

Sibelius lets you export a list of all keyboard shortcuts as an HTML file for easy reference. You can choose to group keyboard shortcuts in the list by category or not, and sort the list by `Shortcut` or `Feature`.



Sibelius Keyboard Shortcuts Preferences

To export a list of Sibelius Keyboard Shortcuts:

- 1 Choose File > Preferences > Keyboard Shortcuts.
- 2 Enable Group by Category if desired.
- 3 Select either Shortcut or Feature for how you want to sort the list.
- 4 Click Export Shortcut List. The exported HTML file automatically opens in your default browser.



Sibelius version Sibelius Ultimate 2023
Feature set Sibelius Coloured Keyboard
Exported on

Feature	Shortcut
Appearance tab	
Align in a Column	Ctrl+Shift+C
Align in a Row	Ctrl+Shift+R
Engraving Rules	Ctrl+Shift+E

Sibelius Keyboard Shortcuts list

- 5 Click OK to close the Preferences dialog.

Search Keyboard Shortcuts

Sibelius lets you search keyboard shortcuts by feature or shortcut.

To search keyboard shortcuts:

- 1 Choose File > Preferences > Keyboard Shortcuts.
- 2 Type the name of the feature for which you want to its shortcut.
- 3 Click Search (or press Return).

New Features and Improvements in Sibelius 2023.2

Independent Layout Marks and Note Spacing in Score Subsets

Sibelius now lets you apply independent layout marks and note spacing in score subsets.

Independent Layout Marks

In the previous version of Sibelius, when adding layout marks (such as system breaks, page breaks and so on) each one would be inherited across the full score and each score subset. Sibelius now lets you apply these independently between the full score and different subsets, so adding a break in either a subset or the in full score only appears in that view of the score. This is similar to how layout marks work in Dynamic Parts.

Copy Layouts Between Full Scores and Subsets

When opening your scores created in 2022.12 with Score Subsets, Sibelius locks the format of the subsets so they retain their existing layout. You can reset this by opening the subset, going to Command Search, and typing **Unlock Format**.

With Sibelius on macOS and Windows, you can copy the layout of a full score or subset to any other score, part, or subset. Previously it was only possible to copy the layout from one part to another.

To copy the layout of a full score or subset to any other score, part or subset:

- 1 Do one of the following:
 - Go to **Parts > Layout > Copy Layout**.
 - Search for **Copy Layout** in Command Search.
- 2 In the resulting dialog, choose the **Source** and **Destination** for where you copy the layout.

Independent Note Spacing

Sibelius now lets you apply note spacing independently between the full score and each score subset. This gives you full control of the layout in each subset.

General Score Subsets Improvements

In Sibelius, there several places where subsets appear alongside parts in lists and dialogs (with subsets at the top, followed by parts):

- **File > Info**
- **File > Export > PDF**
- **Parts > Extract Parts**
- Using the **Next** and **Previous** shortcuts

Improvements for Tuplets

Sibelius introduces a few improvements for Tuplets to make readability easier and to provide a more consistent look:

- Tuplets now have **Auto Bracket** turned on by default.
- In **Reset Beam Groups**, “**Separate Tuplets from Adjacent Notes**” is now off by default.

Dynamic Guitar Staves Improvements

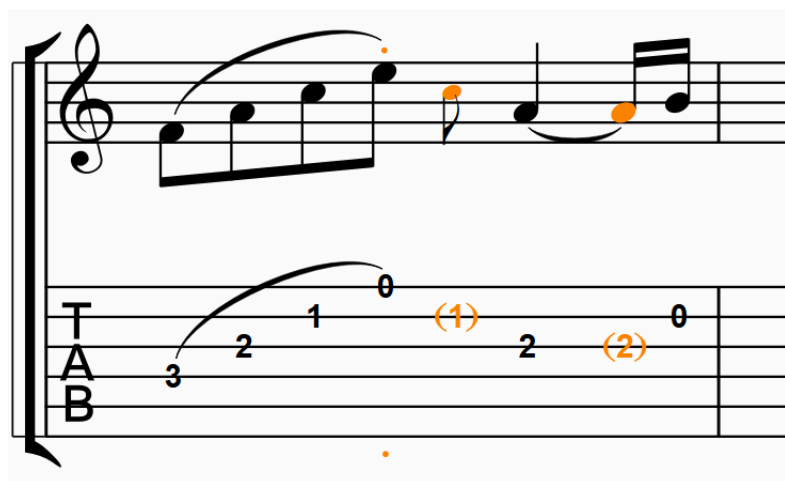
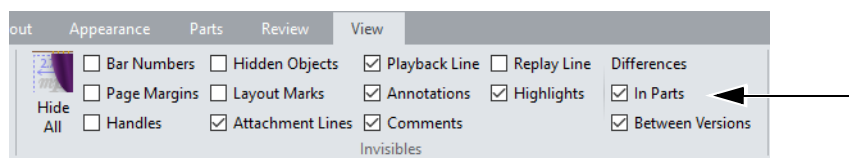
Sibelius now lets you move objects on one staff without affecting the other when using Dynamic Guitar Staves. Previously, if you moved a note articulation, flipped a stem, or changed the size of a cue note, the same change would be reflected on the dynamically linked guitar stave. Beginning with Sibelius 2023.2, all these things are independent. To reset the positions of these objects, you can use **Reset Position** from the **Appearance** tab or **Command Search**.

Objects that can be independent between staves include:

- Note Stem Direction
- Note Cue Size
- Note Articulation Y position
- Note Dot X position
- Slurs flip position
- Note Parenthesis

💡 *Scores and Parts can also have different Note Parentheses.*

Another important improvement is that differences between the Dynamic Staves now show in orange when the **Differences In Parts** checkbox is checked in the **View** tab. See this example where staccatos, cue size, and Parenthesis are all different between the notation and tab staves:



Differences in parts indicated in Dynamic Staves by color

The way Dynamic Guitar Staves relate to Dynamic Parts has been improved as follows:

- Entering notes on a tab dynamic guitar stave no longer creates note spacing issues in the notation guitar dynamic part.
- In rare cases, deleting one Dynamic Guitar Stave could sometimes delete the other one
- Parts extraction is more reliable
- You can now independently add Staff names to each staff, as well as independently specify note brackets

Additionally, slur geometry can now be different between the notation and tab staves.

ManuScript Language Improvements

(Sibelius Ultimate Only)

Audio Export Improvements

Sibelius can export audio files in WAV, AIF and MP3 formats with any of the supported bit depths and sample rates (File > Export > Audio options). However, the existing ManuScript `SaveAsAudio` function only supports exporting at 16bit 44.1 kHz. Sibelius now provides full ManuScript support for all bit depths and sample rates, letting you export audio in several formats using the following syntax.

For WAV and AIF:

```
SaveAsAudio(filename[,include all staves[,play from start[,bit depth[,sample rate]]]])
```

For example:

```
Sibelius.MessageBox("ExportAudioExample");
score = Sibelius.ActiveScore;
score.SaveAsAudio("[filename.wav]", true,true, "16Bit", "44.1kHz");
score.SaveAsAudio("[filename.wav]", true,true, "24Bit", "48kHz");
score.SaveAsAudio("[filename.wav]", true,true, "32Bit", "192kHz");
```

For MP3 export, Sibelius includes a new function called `SaveAsCompressedAudio`. This works similarly:

```
SaveAsCompressedAudio(filename[,include all staves[,play from start[,bit rate[,sample rate]]]])
```

`SaveAsCompressedAudio` supports the various bit rates and sample rates already available in Sibelius:

MP3 Bit Rates:

```
"80kbps"
"96kbps"
"112kbps"
"128kbps"
"160kbps"
"192kbps"
"224kbps"
"256kbps"
"320kbps"
```

MP3 Sample Rates:

```
"44.1kHz"
"48kHz"
```

For example:

```
score = Sibelius.ActiveScore;
score.SaveAsCompressedAudio("file/location/CompressTestNormal.mp3", true, true);
score.SaveAsCompressedAudio("file/location/CompressTestTiny.mp3", true, true, "80kbps");
score.SaveAsCompressedAudio("file/location/CompressTestBig.mp3", true, true, "320kbps", "48kHz");
```

`SaveAsCompressedAudio` function also allows case insensitive arguments, for example: “32BIT, 32bit, 32BiT, 32biT” for bit rate. ManuScript and mp3s

For both `SaveAsAudio` and `SaveAsCompressedAudio`, Sibelius creates an audio file of the score using File > Export > Audio.

If “include all staves” is true (the default), Sibelius clears any existing selection from the score so every instrument is recorded, otherwise only selected staves are exported.

If “play from start” is true (also the default), Sibelius records the entire score from beginning to end, otherwise from the current position of the playback line.

Note that these functions only have an effect if your current playback configuration consists of solely VST or AU devices. The default bit rate is 128 kbps and the default sampling rate is 44.1kHz. The functions returns true if successful, otherwise false (including if you Cancel during export).



For technical support go to
www.avid.com/support