

# **What's New in Sibelius and Sibelius for Mobile**

**versions 2022.3–2022.9**

## Legal Notices

© 2022 Avid Technology, Inc., ("Avid"), all rights reserved. This guide may not be duplicated in whole or in part without the written consent of Avid.

For a current and complete list of Avid trademarks visit: [www.avid.com/legal/trademarks-and-other-notice](http://www.avid.com/legal/trademarks-and-other-notice)

Bonjour, the Bonjour logo, and the Bonjour symbol are trademarks of Apple Computer, Inc.

Thunderbolt and the Thunderbolt logo are trademarks of Intel Corporation in the U.S. and/or other countries.

This product may be protected by one or more U.S. and non-U.S. patents. Details are available at [www.avid.com/patents](http://www.avid.com/patents).

Product features, specifications, system requirements, and availability are subject to change without notice.

**Guide Part Number** 9329-66432-00 REV A 09/22

# Contents

<b>Introduction</b>	1
New Features and Improvements in Sibelius 2022.7	1
New Features and Improvements in Sibelius 2022.7	1
New Features and Improvements in Sibelius 2022.5	1
Improvements in Sibelius for Mobile 2022.4	1
New Features and Improvements in Sibelius 2022.3	2
System Requirements and Compatibility Information	2
Conventions Used in Sibelius Documentation	3
Resources	4
<b>New Features and Improvements in Sibelius 2022.9</b>	5
Staff Names Enhancements	5
ManuScript Language Enhancements	6
<b>New Features and Improvements in Sibelius 2022.7</b>	7
Dynamic Guitar Staves	7
New Instruments	8
All Instruments Available with Sibelius for Mobile	8
<b>New Features and Improvements in Sibelius 2022.5</b>	9
Sibelius Subscription Tiers	9
Flexible Wildcards	9
New Headers and Footers in the Score	10
New Selection Commands	10
New File Format	10
New Non-tied Notes Filter	10
ManuScript Command IDs	11
Improved Default Positioning of Pedal Lines	11
Fixes	12
<b>Improvements in Sibelius for Mobile 2022.4</b>	13
Support for Transposition with Sibelius for Mobile	13
<b>New Features and Improvements in Sibelius 2022.3</b>	16
Changes to Supported Operating Systems	16
Updated Graphic User Interface	16
New Quick Start Templates	17
ManuScript Language Improvements	18

# Introduction

---

## New Features and Improvements in Sibelius 2022.7

Sibelius® 2022.9 provides the following new features, changes, and improvements:

- Staff names enhancements
- New and updated Manuscript Variables

---

## New Features and Improvements in Sibelius 2022.7

Sibelius 2022.7 provides the following new features, changes, and improvements:

- Dynamic Guitar staves for notation and tab
- New instruments
- All instruments now included with Sibelius for mobile according to tier entitlements

---

## New Features and Improvements in Sibelius 2022.5

Sibelius 2022.5 provides the following new features, changes, and improvements:

- New subscription tiers:
  - Sibelius First™
  - Sibelius Artist™
  - Sibelius Ultimate™
- Flexible wildcards with right-click availability
- New Headers and Footers in scores
- New extend selection commands
- New Sibelius file format
- New Non-Tied Notes filter
- New Manuscript Command IDs
- Default Pedal Line improvements
- Fixes

---

## Improvements in Sibelius for Mobile 2022.4

Sibelius for Mobile 2022.4 provides the following improvements:

- Transposition:
  - by key
  - by interval
  - transposing score

---

## New Features and Improvements in Sibelius 2022.3

Sibelius 2022.3 provides the following new features, changes, and improvements:

- Changes to supported operating systems:
  - Support for Windows 11
  - Support for macOS 12.x (“Monterey”)
  - macOS 10.12.x (“Sierra”) no longer supported
- Updated graphic user interface
- New Quick Setup Templates
- Manuscript improvements (Sibelius | Ultimate only)

---

## System Requirements and Compatibility Information

Avid® can only assure compatibility and provide support for hardware and software it has tested and approved.

For complete system requirements and a list of qualified computers, operating systems, hard drives, and third-party devices, visit:

[www.avid.com/compatibility](http://www.avid.com/compatibility)

### Version Compatibility

Sibelius 2019.9 was the last version of Sibelius to support macOS 10.10 “Yosemite” and macOS X 10.11 “El Capitan,” and Sibelius 2022.12 was the last version of Sibelius to support macOS 10.12 “Sierra.” It is recommended that you upgrade to macOS 10.13 “High Sierra” or later to maintain compatibility with current versions of Sibelius.

We recommend that you upgrade to Windows 10 or later to maintain compatibility with current versions of Sibelius. To find out more about migrating to Windows 10, visit [www.microsoft.com](http://www.microsoft.com).

If you are using an older version of Sibelius and are upgrading to macOS “Catalina” or Windows 10, we recommend that you upgrade and stay current with the latest version Sibelius as well.

---

## Conventions Used in Sibelius Documentation

Sibelius documentation uses the following conventions to indicate menu choices, keyboard commands, and mouse commands:

Convention	Action
File > Save	Choose Save from the File tab
Control+N	Hold down the Control key and press the N key
Control-click	Hold down the Control key and click the mouse button
Right-click	Click with the right mouse button

The names of Commands, Options, and Settings that appear on-screen are in a different font.

The following symbols are used to highlight important information:



*User Tips are helpful hints for getting the most from Sibelius.*



*Important Notices include information that could affect data or the performance of Sibelius.*



*Shortcuts show you useful keyboard or mouse shortcuts.*



*Cross References point to related sections in this guide and other Avid documentation.*

## How to Use this PDF Guide

This PDF provides the following useful features:

- The Bookmarks on the left serve as a continuously visible table of contents. Click on a subject heading to jump to that page.
- Click a + symbol to expand that heading to show subheadings. Click the – symbol to collapse a subheading.
- The Table of Contents provides active links to their pages. Select the hand cursor, allow it to hover over the heading until it turns into a finger. Then click to locate to that subject and page.
- All cross references in **blue** are active links. Click to follow the reference.
- Select Find from the Edit menu to search for a subject.
- When viewing this PDF on an iPad, it is recommended that you open the file using iBooks to take advantage of active links within the document. When viewing the PDF in Safari, touch the screen, then touch Open in “iBooks”.

---

## Resources

The Avid website ([www.avid.com](http://www.avid.com)) is your best online source for information to help you get the most out of Sibelius.

### Account Activation

Create an Avid Master Account at:

[www.avid.com/account](http://www.avid.com/account)

### Product Registration

Register your purchase online at:

[www.avid.com/register](http://www.avid.com/register)

### Product Downloads

Download software, updates, documentation, and other resources from:

[my.avid.com/products](http://my.avid.com/products)

### Support and Downloads

Contact Avid Customer Success (technical support), download software updates and the latest online manuals, browse the Compatibility documents for system requirements, search the online Knowledge Base or join the worldwide Avid user community on the User Conference.

[www.avid.com/support](http://www.avid.com/support)

### Get Started Fast

Visit the Get Started Fast with Sibelius YouTube channel.

[Get Started Fast with Sibelius](#)

### Training and Education

Study on your own using courses available online, find out how you can learn in a classroom setting at an Avid-certified training center, or view video tutorials and webinars.

[www.avid.com/education](http://www.avid.com/education)

### Products and Developers

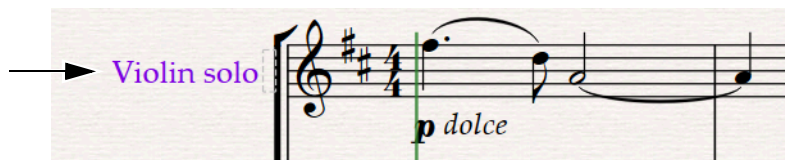
Learn about Avid products, download demo software, or learn about our Development Partners and their plug-ins, applications, and hardware.

[www.avid.com/products](http://www.avid.com/products)

# New Features and Improvements in Sibelius 2022.9

## Staff Names Enhancements

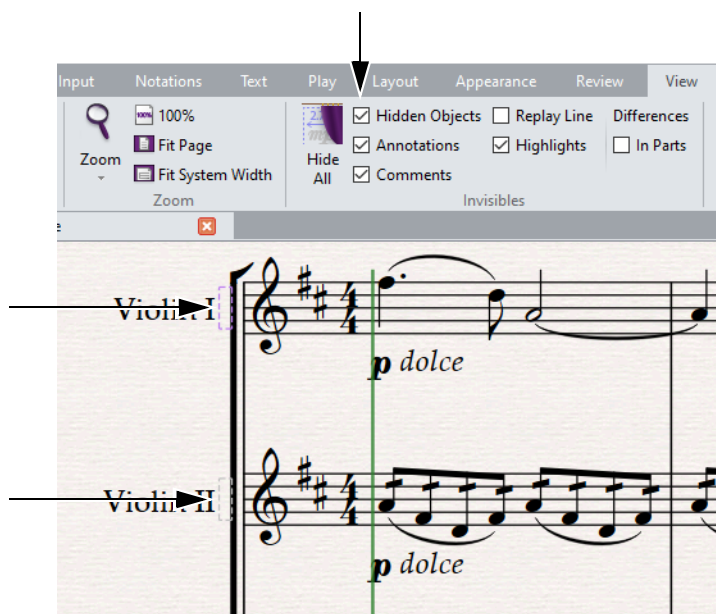
Sibelius lets you add labels to staves to denote player numbers or provide other designations using a new method to add staff names.



*Edited staff name*

**To add a staff name:**

- 1 Ensure that the View > Invisibles > Hidden Objects option is enabled.
- 2 Double-click to the left of the staff whose name you want to edit.



*View "Hidden Objects" to edit staff names*

- 3 Type in the numbers or text that you want.

**To reset staff names later in a score:**

- Add an Instrument change.



---

# ManuScript Language Enhancements

(Sibelius Ultimate Only)

## New Instrument Change Variables

**FullInstrumentName** Returns the full instrument name associated with this instrument change (read/write).

**FullInstrumentNameWithFormatting** Returns the full instrument name associated with this instrument change including any changes of font or style, if any (read/write).

**FullStaffName** Returns the full staff name associated with this instrument change (read/write).

**FullStaffNameWithFormatting** Returns the full staff name associated with this instrument change including any changes of font or style, if any (read/write).

**ShortInstrumentName** Returns the short instrument name associated with this instrument change (read/write).

**ShortInstrumentNameWithFormatting** Returns the short instrument name associated with this instrument change including any changes of font or style, if any (read/write).

**ShortStaffName** Returns the short staff name associated with this instrument change (read/write).

**ShortStaffNameWithFormatting** Returns the short staff name associated with this instrument change including any changes of font or style, if any (read/write).

## New and Updated Sibelius Variables

**ViewAnnotations** Is True if View > Invisibles > Annotations is switched on (read/write).

**ViewAttachmentLines** Is True if View > Invisibles > Attachment Lines is switched on (read/write).

**ViewBarNumbers** Is True if View > Invisibles > Bar Numbers is switched on (read/write).

**ViewComments** Is True if View > Invisibles > Comments is switched on (read/write).

**ViewHandles** Is True if View > Invisibles > Handles is switched on (read/write).

**ViewHiddenObjects** Is True if View > Invisibles > Hidden Objects is switched on (read/write).

**ViewLayoutMarks** Is True if View > Invisibles > Layout Marks is switched on (read/write).

**ViewPageMargins** Is True if View > Invisibles > Page Margins is switched on (read/write).

**ViewPlaybackLine** Is True if View > Invisibles > Playback Line is switched on (read/write).

**ViewReplayMarker** Is True if View > Invisibles > Replay Line is switched on (read/write).

**ViewHighlights** Is True if View > Invisibles > Highlights is switched on (read/write).

## New Staff Variables

**FullStaffName** Returns the initial full staff name (read/write).

**FullStaffNameWithFormatting** Returns the initial full staff name including any changes of font or style, if any (read/write).

**ShortStaffName** Returns the initial short staff name (read/write).

**ShortStaffNameWithFormatting** Returns the initial short staff name including any changes of font or style, if any (read/write).

# New Features and Improvements in Sibelius 2022.7

## Dynamic Guitar Staves

Sibelius now provides Dynamic Guitar staves, which let you link two staves so that a guitar notation staff can be paired with a tablature staff and share the same stream of musical data. The template for “Solo Guitar” has been updated to open with this enabled.

## Creating Dynamic Guitar Staves

To create Dynamic Guitar staves, do one of the following:

- Open the Solo Guitar template.
- When starting from a blank score, add the guitar instrument you want with [notation & tab] appended to the name, such as Classical Guitar [notation & tab] (Home > Add or Remove > Guitars).

You can now edit the notation and tab staves for the guitar instrument in tandem.

To change a single guitar notation or tab staff into dynamic guitar staves:

- 1 Select the guitar notation or tab staff that you want to change.
- 2 On the Home tab, type Add Dynamic Guitar Staff in Commands search and press Return or Enter.

This adds a staff linked to the original guitar staff. It is the opposite notation style of the original staff (notation or tab).

## Using Dynamic Guitar Staves

Enter notes in either staff and their equivalent appears in the adjacent staff.

Guitar staves: treble clef and tab

You can modify the musical content of either staff and your changes are made on the other staff automatically.

Dynamic Guitar staves, tandem inversion and transposition

## Differences Between Notation and Tab Staves

When working with Dynamic Guitar staves, there are important differences between notation and tab when editing:

- Different tab fingerings can be chosen while the notated pitches stay the same even though they share the same underlying data.
- Since some objects do not apply to tab, Sibelius filters those objects. For example, expression text is only entered on the notation staff while slurs can be entered on either.
- Bends (J key) also produce different notation in each style and are treated accordingly.
- Each staff is given a separate Dynamic Part that can be edited independently like any other part.

## Command ID for Manuscript Language

(Sibelius Ultimate Only)

The Command ID `add_dynamic_guitar_staff` has been added to the Manuscript language for Sibelius Ultimate.

---

## New Instruments

New instruments have been added to Sibelius. For example:

**Suspended Cymbal** Similar to the generic Cymbals instrument but with specific sound mapping for rolls.

**Bass Clarinet in A** The more rare counterpart to the Bass Clarinet in B-flat used in works by Wagner, Mahler, and Strauss.

**Contrabass (solo, F# B E A tuning)** A tuning variant used for soloists in bass concertos where the written notation is transposed down a major second.

---

## All Instruments Available with Sibelius for Mobile

Sibelius for mobile now includes all instruments with the corresponding tiers of Sibelius on Mac and Windows.

# New Features and Improvements in Sibelius 2022.5

---

## Sibelius Subscription Tiers

Avid offers three subscription tiers for Sibelius:

**Sibelius Ultimate** For professional music composers, arrangers, engravers, and publishers, as well as educational institutions.

**Sibelius Artist** For aspiring music composers and hobbyists writing for small ensembles (up to 16 instrument parts).

**Sibelius First** A free version of Sibelius for those just starting out with music notation.

---

## Flexible Wildcards

Sibelius lets you define wildcard text within a score. Wildcards are simple ways of recalling and using generic score information throughout a score. You can now define any new wildcard text as you want and Sibelius overrides the Score Info (“backstage”).

All wildcards are available in the right-click word menu. They can be used and assigned a text value anywhere within the score. This lets you use wildcards with Sibelius for mobile as well as with Sibelius on Mac and Windows.

### To set up a new wildcard in your score:

- 1 Add a wildcard text object—System Text styles such as title, composer, subtitle, header, and so on, but not tempo or metronome marks).
- 2 Right-click (or two-finger tap on mobile), and choose the wildcard you want from the menu.
- 3 While editing the text, use an equals sign followed by the new text definition (e.g., “`\$title=<new definition>`”) to set that wildcard to the new definition for the entire score. For example:  
`\$title=Bright Sunny Day\`
- 4 Exit text-editing mode and the Title now reads “Bright Sunny Day” in the score.
- 5 When you next use “`\$title\`” in your score, it will read “Bright Sunny Day.”

If you edit the text object again, it lets you edit the value of the wildcard right there as “`\$title=Bright Sunny Day\`”. Modifying this value update all values for the `$title` wildcard throughout the score, including in the “backstage” (Score Info) page in the File tab on Mac and Windows.

If you define a “backstage” wildcard within a text object, it also sets that defined value in the appropriate field in backstage. This is useful when using Sibelius for mobile, which has no backstage. In this case, these changes would only be seen when opening the file in Sibelius on Mac or Windows.



*On Mac and Windows, wildcards for the score can still be set in backstage.*

---

## New Headers and Footers in the Score

(Sibelius Ultimate Only)

Sibelius adds a new parameter to Header and Footer text styles to stop headers repeating beyond a Section End layout marking. This means you can have multiple values in Headers and Footers throughout a score (as is common in multi-movement scores).

**To specify headers or footers in a score:**

- 1 Go to **Edit Text Styles** and edit the Header or Footer text.
- 2 In the **Repeat** page, enable the new **Repeat until next section end** option.
- 3 Click **OK**.
- 4 In your score, enter a **Section End** using the **Inspector**.
- 5 Enter Header or Footer text on the page *before* the **Section End**. Notice that this does not appear after the **Section End** you just entered. To specify a new value for the Header or Footer in the following section, create a new Header or Footer text object attached *after* the **Section End**.

---

## New Selection Commands

Sibelius lets you extend a selection to the start or to the end of a score with two new commands in the **Selection** category within **Preferences > Keyboard Shortcuts**. These are also accessible using **Command Search** and can be executed using the following new keyboard shortcuts:

- To extend selection to start of score:
  - On Mac, press **Command+Shift+Home**.
  - Win, press **Control+Shift+Home**.
- To extend selection to end of score:
  - On Mac, press **Command+Shift+End**.
  - Win, press **Control+Shift+End**.

---

## New File Format

Sibelius 2022.5 uses a new file format in order to support the new option for repeating text. This means that while you can still open 2022.5 scores in any version of Sibelius after 2020.1, when opening 2022.5 scores that take advantage of the new wildcard definitions or the new header section end logic, those features will not be available.

---

## New Non-tied Notes Filter

Sibelius now lets you filter non-tied notes (single notes and notes that begin a set of tied notes) within a selection. This is especially useful for adding articulations to non-tied notes in the selection.

**To filter untied notes in a selection, do one of the following:**

- On Mac or Window, choose **Non-Tied Notes** from **Home > Filter**.
- On Mac, Windows, or Sibelius for mobile, use **Command Search** for **Non-tied notes**.

---

## ManuScript Command IDs

(Sibelius Ultimate Only)

The following new Command IDs have been added to ManuScript:

**filter\_non\_tied\_notes** Filter notes not tied or that start a tie.

**section\_end** Add a new section end.

---

## Improved Default Positioning of Pedal Lines

Pedal lines now finish correctly at the end of a bar (rather than carrying into the next bar or system), so there is no need to edit them to end in the correct place.

---

## Fixes

- The installer on Mac no longer installs on macOS 10.12 and earlier. The installer used to run on earlier, no-longer supported versions of macOS.
- Wildcards entered using the Quick Start window now also work on a Title page.
- Sibelius no longer quits unexpectedly after using **Reset Position** on multiple symbols.
- A problem (introduced in Sibelius 2021.9) with entering Korean and Japanese lyrics into Sibelius has been corrected.

# Improvements in Sibelius for Mobile 2022.4

---

## Support for Transposition with Sibelius for Mobile

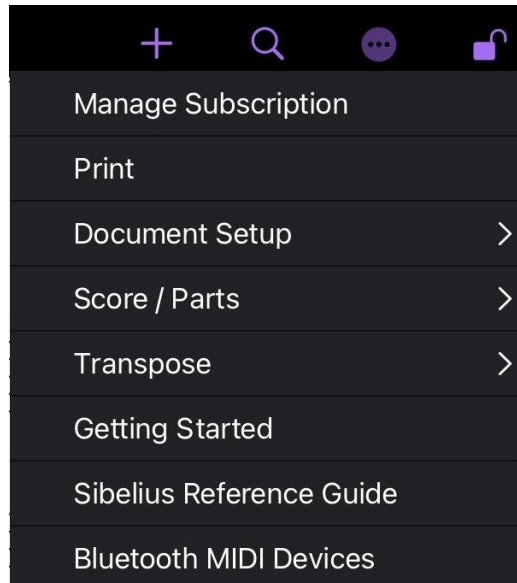
Sibelius for Mobile 2022.4 now includes support for the Transposition command in all tiers. Sibelius for mobile lets you transpose object selections, range selections, or complete scores by key or by interval. Sibelius and Sibelius | Ultimate also support toggling between concert pitch and transposed score views.

When transposing any score created with a key (such as C major or A minor), all key signatures in the score are updated accordingly. For scores that were created Atonal/No key, no key signatures are added.

When transposing a range (passage) selection that includes the System Stave (purple highlight), new key signatures are applied within the selection accordingly. For object and range selection that do not contain the System Stave (blue highlight), notes are transposed, but no key signatures are added.

### To transpose a complete score:

- 1 Log in to your Avid Master Account.
- 2 Open the score you want to transpose.
- 3 Ensure that nothing is selected in the score.
- 4 Tap the ... More menu.
- 5 Tap Transpose.

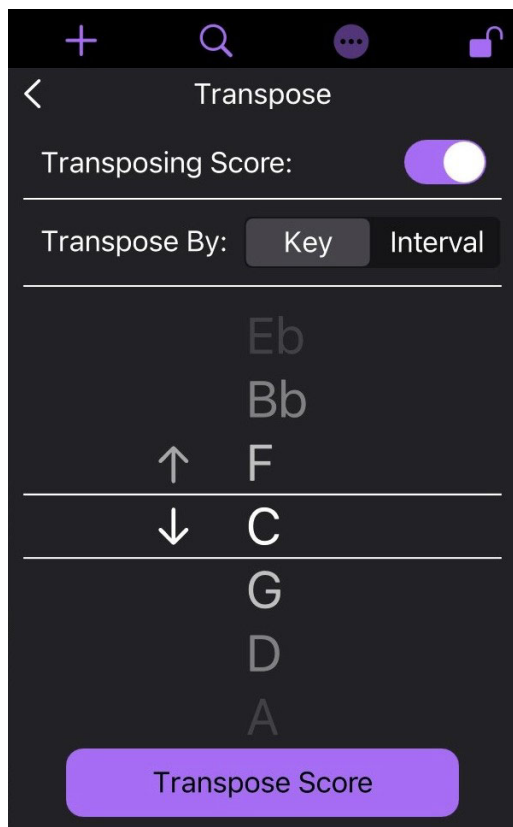


*Transpose command in the ... More menu*



6 The menu updates with the following transposition options:

- Transposing Score: tap to toggle between a transposing score or a C score (Sibelius and Sibelius | Ultimate only).
- Transpose By: tap Key to transpose the score by key or tap Interval to transpose the score by interval.
- Up and Down arrows: swipe up to transpose up or swipe down to transpose down.
- Note or Interval name: swipe up or down to select the desired key or interval you want for transposition.

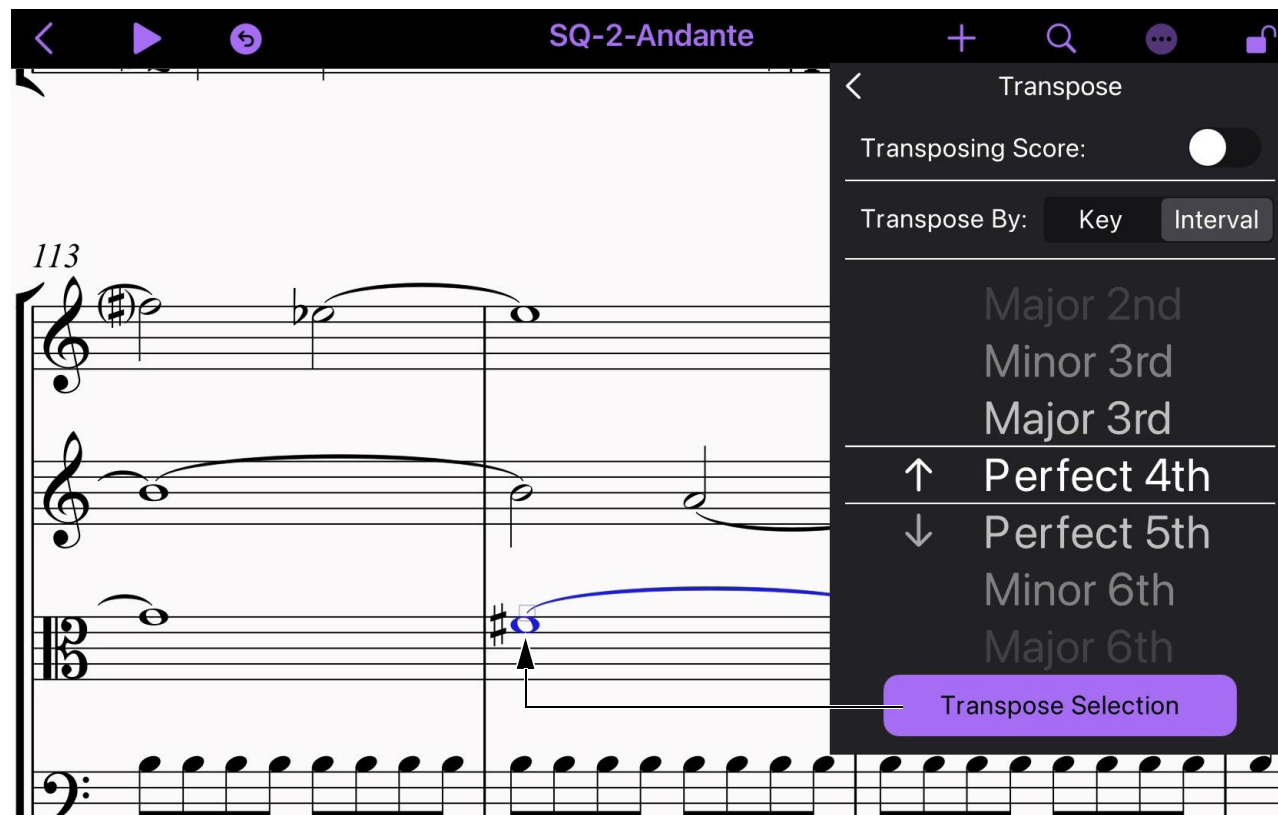


*Transpose menu options*

7 Tap the Transpose Score button.

**To transpose a selection in a score:**

- 1 Make either an object or range selection including the notes you want to transpose.
- 2 Tap the ... More menu.
- 3 Tap Transpose.
- 4 Set the options in the transpose menu as desired.



*Transposing an object (note) selection up by a Perfect 4th*

- 5 Tap Transpose Selection.

# New Features and Improvements in Sibelius 2022.3

## Changes to Supported Operating Systems

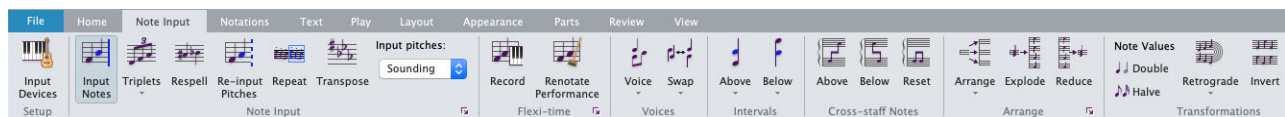
Sibelius now supports Windows 11.

Sibelius now supports macOS 12.x (“Monterey”).

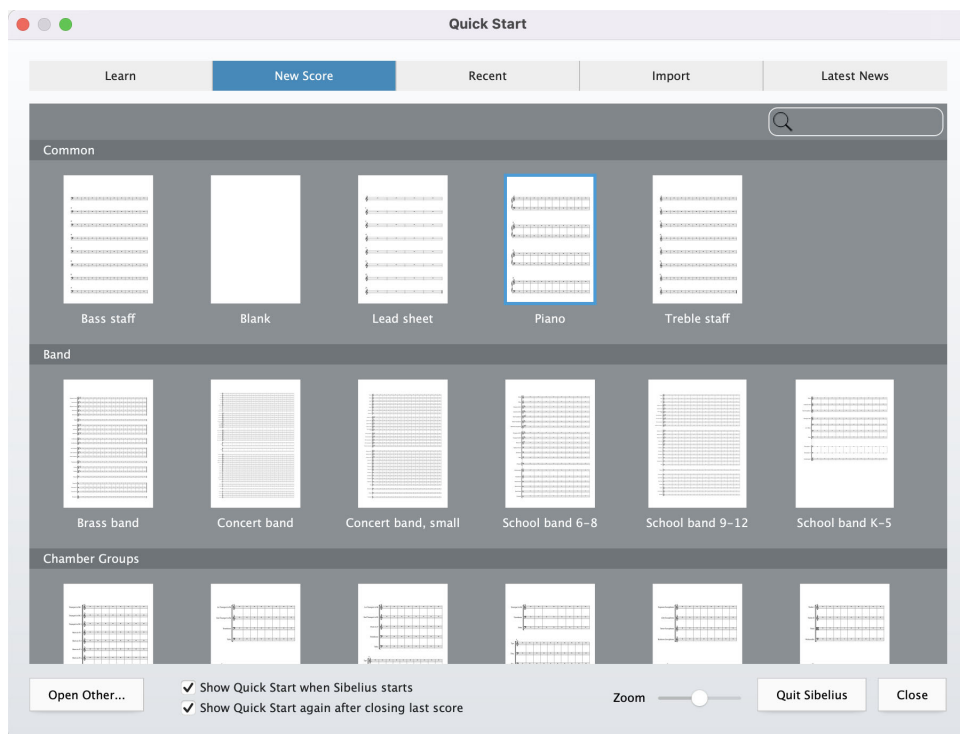
Sibelius no longer supports macOS 10.12.x (“Sierra”).

## Updated Graphic User Interface

The graphic user interface for Sibelius has been updated with a more modern style. The new style is flatter and cleaner in appearance with a more subdued color scheme. The Ribbon and the Quick Start have been updated with the new style among others.



*Ribbon, Note Input tab*



*Sibelius Quick Start window*

---

## New Quick Start Templates

The following new score templates are now included in the Sibelius Quick Start, and are available in English, French, German, Spanish, Brazilian Portuguese, Russian, and Japanese:

- for Band
- for Symphonic Band
- for Marching Band
- for Brass Band
- for Concert Band
- for Brass Trio
- for Brass Quartet
- for Brass Quintet
- for Flute, Clarinet in Bb, Violin, Violoncello, and Piano
- for Piano Trio
- for Piano Quartet
- for Piano Quintet
- for Woodwind Trio
- for Woodwind Quartet
- for Woodwind Quintet
- for String Trio
- for String Quartet
- for String Sextet
- for Saxophone Quartet
- for 2-Octave Handbell Choir
- for 3-Octave Handbell Choir
- for Jazz Combo
- for SATB Voices and Piano
- for SATB Voices a cappella
- for SSA Voices and Piano
- for SSA Voices a cappella
- for TTB Voices and Piano
- for TTB Voices a cappella
- for Solo Violoncello
- for String Orchestra
- for Organ
- for Piano
- for Solo Guitar
- for Solo Trombone
- for Solo Trumpet in Bb
- for Violin and Piano
- for Solo Violin
- for Solo Flute
- for Voice and Piano
- for Orchestra
- Lead Vocals
- Backup Vocals
- Lead Guitar
- Rhythm Guitar

---

## ManuScript Language Improvements

### (Sibelius | Ultimate Only)

The ManuScript language for Sibelius | Ultimate provides the following improvements: new methods for Engraving Rules and for Staff scaling.

#### Bar Number Frequency

`BarNumberFrequency(BarNumberFrequencyCategory, [customFrequency])`, which is equivalent to setting the Bar Number Frequency setting in the Engraving Rules Dialog. Valid `BarNumberFrequencyCategory` values include: `EverySystem` (0), `No-BarNumbers` (1), `EveryNthBar` (2). The optional `customFrequency` argument is used in conjunction with the `EveryNthBar` (2) `BarNumberFrequencyCategory`, and sets how often (in bars) Bar Numbers will appear in the score.

#### Staff Size

`ScaleFactorChange(StaveScaleFactor, startBarNum, endBarNum)`, which is equivalent to setting the Staff Size property within the Inspector. Valid `StaveScaleFactor` types include: `NormalSize` (0), `MediumSize` (1), `SmallSize` (2), and `ExtraSmallSize` (3). It requires a valid range specified by `startBarNum` and `endBarNum`.

#### Find Command Name Updates

The `Sibelius.FindCommandName()` function now works for both Command IDs and Style IDs.

`FindCommandName(Id)` translates a `CommandId` or a `StyleId` to the corresponding Command Name or Style Name in the current language set in Sibelius and returns that Name as a string. If no match is found, an empty string is returned. For example:

```
Sibelius.FindCommandName("toggle_review_mode"); //CommandId
Sibelius.FindCommandName("line.staff.bend");      //StyleId
```

#### New Command IDs

49 new Command IDs that work with the `Execute` function have been added. For a complete list, see the *ManuScript Language Guide.pdf*.



**Technical Support (USA)**  
Visit the Online Support Center  
at [www.avid.com/support](http://www.avid.com/support)

**Product Information**  
For company and product information,  
visit us on the web at [www.avid.com](http://www.avid.com)