



What's New in Sibelius | Ultimate, Sibelius, and Sibelius | First Software

version 2021.2

Legal Notices

© 2021 Avid Technology, Inc., ("Avid"), all rights reserved. This guide may not be duplicated in whole or in part without the written consent of Avid.

For a current and complete list of Avid trademarks visit: www.avid.com/legal/trademarks-and-other-notice

Bonjour, the Bonjour logo, and the Bonjour symbol are trademarks of Apple Computer, Inc.

Thunderbolt and the Thunderbolt logo are trademarks of Intel Corporation in the U.S. and/or other countries.

This product may be protected by one or more U.S. and non-U.S. patents. Details are available at www.avid.com/patents.

Product features, specifications, system requirements, and availability are subject to change without notice.

Guide Part Number 9329-66252-00 REV A 02/21

Contents

- Introduction 1
 - New Features and Improvements in Sibelius 2021.2 1
 - System Requirements and Compatibility Information 1
 - Conventions Used in Sibelius Documentation 2
 - Resources 3
- New Features and Improvements in Sibelius 2021.2 4
 - Commands Gallery 4
 - Command Search 5
 - ManuScript Improvements 6

Introduction

New Features and Improvements in Sibelius 2021.2

Sibelius 2021.2 provides the following new features, changes, and improvements:

- The new Command gallery on the Home tab lists all commands in Sibelius and lets you select any command to execute it.
- Command Search lets you search for and find any command in Sibelius and execute it.
- Manuscript updates for creating scriptable plug-ins or plug-in macros (Sibelius | Ultimate only)

System Requirements and Compatibility Information

Avid® can only assure compatibility and provide support for hardware and software it has tested and approved.

For complete system requirements and a list of qualified computers, operating systems, hard drives, and third-party devices, visit:
www.avid.com/compatibility

Version Compatibility

Sibelius 2019.9 was the last version of Sibelius to support macOS 10.10 “Yosemite” and macOS X 10.11 “El Capitan.” It is recommended that you upgrade to macOS 10.12 “Sierra” or later to maintain compatibility with current versions of Sibelius.

We recommend that you upgrade to Windows 10 to maintain compatibility with current versions of Sibelius. To find out more about migrating to Windows 10, visit <https://www.microsoft.com/en-gb/windows/windows-7-end-of-life-support-information>.

If you are using an older version of Sibelius and are upgrading to macOS “Catalina” or Windows 10, we recommend that you upgrade and stay current with the latest version Sibelius as well.

Conventions Used in Sibelius Documentation

Sibelius documentation uses the following conventions to indicate menu choices, keyboard commands, and mouse commands:

Convention	Action
File > Save	Choose Save from the File tab
Control+N	Hold down the Control key and press the N key
Control-click	Hold down the Control key and click the mouse button
Right-click	Click with the right mouse button

The names of Commands, Options, and Settings that appear on-screen are in a different font.

The following symbols are used to highlight important information:



User Tips are helpful hints for getting the most from Sibelius.



Important Notices include information that could affect data or the performance of Sibelius.



Shortcuts show you useful keyboard or mouse shortcuts.



Cross References point to related sections in this guide and other Avid documentation.

How to Use this PDF Guide

This PDF provides the following useful features:

- The Bookmarks on the left serve as a continuously visible table of contents. Click on a subject heading to jump to that page.
- Click a + symbol to expand that heading to show subheadings. Click the – symbol to collapse a subheading.
- The Table of Contents provides active links to their pages. Select the hand cursor, allow it to hover over the heading until it turns into a finger. Then click to locate to that subject and page.
- All cross references in **blue** are active links. Click to follow the reference.
- Select Find from the Edit menu to search for a subject.
- When viewing this PDF on an iPad, it is recommended that you open the file using iBooks to take advantage of active links within the document. When viewing the PDF in Safari, touch the screen, then touch Open in “iBooks”.

Resources

The Avid website (www.avid.com) is your best online source for information to help you get the most out of Sibelius.

Account Activation

Create an Avid Master Account at:

www.avid.com/account

Product Registration

Register your purchase online at:

www.avid.com/register

Product Downloads

Download software, updates, documentation, and other resources from:

my.avid.com/products

Support and Downloads\

Contact Avid Customer Success (technical support), download software updates and the latest online manuals, browse the Compatibility documents for system requirements, search the online Knowledge Base or join the worldwide Avid user community on the User Conference.

www.avid.com/support

Get Started Fast

Visit the Get Started Fast with Sibelius YouTube channel.

www.youtube.com/playlist?list=PLhCR_8aS9jOPvy871jRUESB0EdgOCD8s1

Training and Education

Study on your own using courses available online, find out how you can learn in a classroom setting at an Avid-certified training center, or view video tutorials and webinars.

www.avid.com/education

Products and Developers

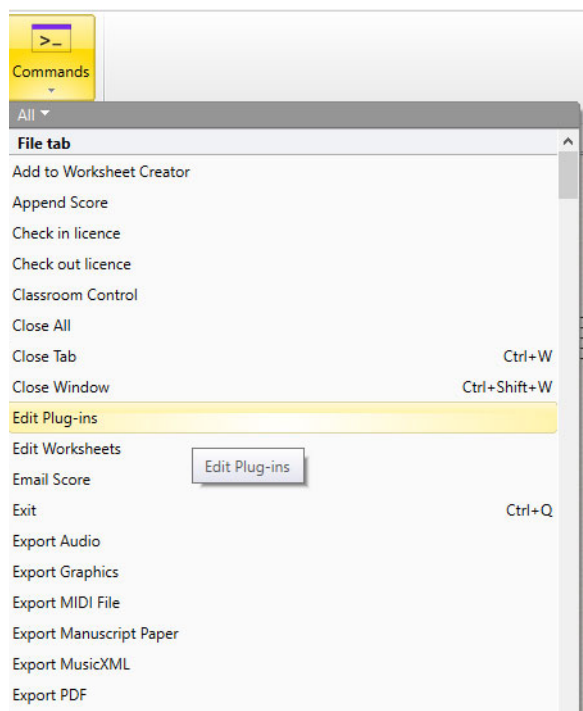
Learn about Avid products, download demo software, or learn about our Development Partners and their plug-ins, applications, and hardware.

www.avid.com/products

New Features and Improvements in Sibelius 2021.2

Commands Gallery

The new Commands gallery on the Home tab of the Ribbon provides a complete list of commands in Sibelius. Commands are organized in alphabetical order by category in terms of location (such as commands accessible from the File or Home tab of the Ribbon, or from the keypad) or by function (such as **Tuplets**, **Zoom**, or **Selection**). Assigned keyboard shortcuts (if any) are shown to the right of the name of commands in the list. You can quickly scroll the list of commands to find the one you want, and then click that command in the list to execute it.



List of Commands in the Home tab of the Ribbon

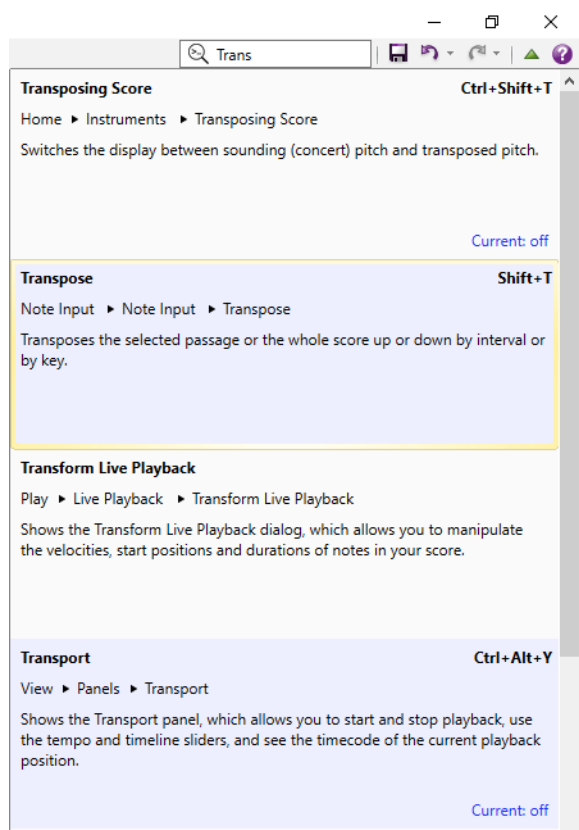
Command Search

Command Search lets you search for any command in Sibelius, whether it be in any of the Ribbon menus, the File tab, the Keypad, the Inspector, or the Add or Remove Instruments dialog, by typing the name of the command. As you type, matching commands are shown below the search field. Results for each command are listed by name and include its keyboard shortcut if any (for example, Shift+T), its location (for example, Note Input > Note Input > Transpose), and a description.

Click the name of the command, or use the Up/Down arrows to select the command from the search results and then press Return (Mac) or Enter (Windows) to execute that command.

To run a Command Search and execute the command:

- 1 Make the appropriate selection in your score for the command you want to apply.
- 2 Click in the Command Search field or press , (Comma) on the keyboard.
- 3 Start typing the name of the command you want to use. Matching results are listed below the Command Search field.



Command Search for “Trans”

- 4 To execute the command, click it in the list, or select it using the Up and Down Arrow keys and press Enter (Windows) or Return (Mac).

ManuScript Improvements

(Sibelius | Ultimate Only)

Creating Scriptable Plug-ins

ManuScript lets you create scriptable plug-ins using any sequence of any number of Sibelius commands. Use `Cmd()` in conjunction with `Execute()` to execute any command by name.

 *For a complete list of CommandIDs, refer to the [ManuScript Guide.pdf](#).*

Cmd()

Use `Cmd()` in conjunction with `Execute()` to look up the CommandID for any command name (as it appears in Sibelius) in any language.

For example, if you write the following line of code in a plug-in:

```
Cmd("Select all");
```

it will return the name of the associated CommandID, which in this case is: `select_all`.

The `Cmd()` function works in whatever language you are using for Sibelius. For example, if you are regularly working in French, you could write the command in French:

```
Cmd("Sélectionner tout");
```

and it will return the name of the associated CommandID: `select_all`

Note that if you write a scripted plug-in using `Cmd()` it will only work in the language in which it is written, so use CommandIDs to ensure optimal compatibility in all languages.

However, if you only want to write plug-ins in your own language (such as English), write Execute Calls as follows:

```
Sibelius.Execute(Cmd("Select All"));
```

– or –

```
Sibelius.Execute(Cmd("Repeat"));
```

Execute()

`Execute()` in ManuScript lets you create scriptable plug-ins that can execute any number of commands one after the other. Place the CommandID of any command that you want the plug-in to use in straight quotes inside the parenthesis as follows:

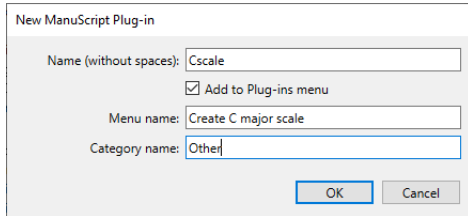
```
Sibelius.Execute("select_all");
```

Any command listed in the Commands gallery on the Home tab can be used with `Sibelius.Execute()`, but Sibelius features that are not in that list cannot be used with this method (such as adding text, symbols, lines, clefs, and so on). Of course, you can use other ManuScript methods for features not in the Commands gallery in combination with the `Sibelius.Execute()` method to create plug-ins for almost any workflow.

To create a plug-in using the `Execute()` method, try the following example:

- 1 Create a new score with a single staff and add a note (an eighth-note middle C for example).
- 2 Choose File > Plug-ins > Edit Plug-ins.
- 3 In the Edit Plug-ins dialog, click New.

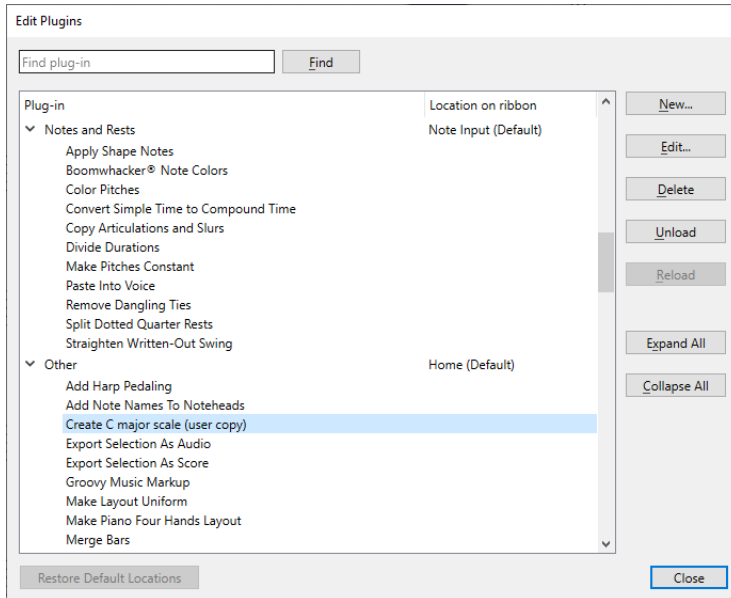
- 4 In the New Manuscript Plug-in dialog, type a Name (for this example, type “Cscale”), Menu (the name of the plug-in as it appears in the Plug-ins menu, such as “Create C major scale”), and Category (such as “Other”) for the plug-in then click OK.



The dialog box is titled "New Manuscript Plug-in". It contains three text input fields: "Name (without spaces):" with the value "Cscale", "Menu name:" with the value "Create C major scale", and "Category name:" with the value "Other". There is a checked checkbox labeled "Add to Plug-ins menu". At the bottom right are "OK" and "Cancel" buttons.

New Manuscript Plug-in dialog

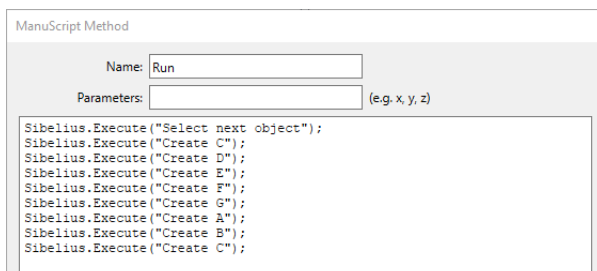
- 5 Select the new plug-in (“Other > Create C scale (user copy)”) in the list and click Edit to open the Plug-in editor.



The dialog box is titled "Edit Plugins". It has a search bar at the top labeled "Find plug-in" with a "Find" button. Below is a list of plug-ins organized into two categories: "Notes and Rests" and "Other". The "Other" category is expanded, showing a list of plug-ins including "Create C major scale (user copy)", which is highlighted. To the right of the list are buttons for "New...", "Edit...", "Delete", "Unload", "Reload", "Expand All", and "Collapse All". At the bottom left is a "Restore Default Locations" button, and at the bottom right is a "Close" button.

Edit Plug-ins dialog

- 6 Initialize and Run are listed in the Methods section. Double-click Run to open the Manuscript Method dialog.
- 7 Delete "Sibelius.MessageBox();" before entering the commands you want to use. For this example, enter the following:
- ```
Sibelius.Execute(Cmd("Select next object"));
Sibelius.Execute(Cmd("Create C"));
Sibelius.Execute(Cmd("Create D"));
Sibelius.Execute(Cmd("Create E"));
Sibelius.Execute(Cmd("Create F"));
Sibelius.Execute(Cmd("Create G"));
Sibelius.Execute(Cmd("Create A"));
Sibelius.Execute(Cmd("Create B"));
Sibelius.Execute(Cmd("Create C"));
```

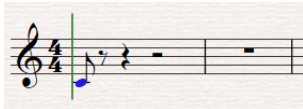


The dialog box is titled "Manuscript Method". It has a "Name:" field with the value "Run" and a "Parameters:" field with the placeholder "(e.g. x, y, z)". Below these fields is a text area containing the following code:

```
Sibelius.Execute("Select next object");
Sibelius.Execute("Create C");
Sibelius.Execute("Create D");
Sibelius.Execute("Create E");
Sibelius.Execute("Create F");
Sibelius.Execute("Create G");
Sibelius.Execute("Create A");
Sibelius.Execute("Create B");
Sibelius.Execute("Create C");
```

*Manuscript Method dialog*

- 8 Click OK to close the Manuscript Method dialog.
- 9 Click OK to close the Plug-in editor.
- 10 Click Close to exit the Edit Plug-ins dialog and return to the score.
- 11 Select the eighth-note middle C in the score.



*Eighth-note middle C selected*

- 12 Select Home > Plug-ins > Other > Create C scale.

Sibelius runs the plug-in you just created and generates an ascending C major scale using the rhythm of the selected note (in this case, an eighth-note).



*C major scale created by the custom Create C major scale plug-in*

Add the following to the end of your plug-in to automatically play back the scale after it is created

```
Sibelius.Execute(Cmd("Cancel/Stop/Select None"));
Sibelius.Execute(Cmd("Cancel/Stop/Select None"));
Sibelius.Execute(Cmd("Play From Selection"));
```



*"Cancel/Stop/Select None" needs to be executed twice to first stop inputting notes and then again to deselect the top C.*

Since all commands in the Commands list can be used with the Sibelius.Execute() method, you can create plug-in macros to speed up workflows that include multi-step repetitive tasks. For instance, the following example executes 17 steps with a single plug-in macro:

```
Sibelius.Execute(Cmd("Filter Voice 1"));
Sibelius.Execute(Cmd("Copy"));
Sibelius.Execute(Cmd("Triplet"));
Sibelius.Execute(Cmd("Paste"));
Sibelius.Execute(Cmd("Select next object"));
Sibelius.Execute(Cmd("Select previous object"));
Sibelius.Execute(Cmd("Eighth note (quaver)"));
Sibelius.Execute(Cmd("Repeat"));
Sibelius.Execute(Cmd("Quarter note (crotchet)"));
Sibelius.Execute(Cmd("Select previous object"));
Sibelius.Execute(Cmd("Select previous object"));
Sibelius.Execute(Cmd("Select previous object"));
Sibelius.Execute(Cmd("Copy"));
Sibelius.Execute(Cmd("Delete"));
Sibelius.Execute(Cmd("Select next object"));
Sibelius.Execute(Cmd("Paste"));
Sibelius.Execute(Cmd("Select previous object"));
```



*You can further speed up your workflow by assigning a keyboard shortcut to your plug-in.*

## Additional New Manuscript Sibelius Objects

The following new Sibelius Object Methods and Variables have been added to Manuscript in support of `Execute()` and `Cmd()`.

### Methods

**CommandExists()** Returns a boolean to reflect if a given CommandID is available for execution. For example:

```
if (Sibelius.CommandAvailable(toggle_review_mode)) {}
```

**FindCommandId(*Command Name*)** Translates the name of a command (as shown in Sibelius) into a CommandID, and returns that CommandID as a string. The Command Name argument is case-insensitive. It is also specific to the current language set inside Sibelius. If no match is found, an empty string will be returned. For example:

```
Sibelius.FindCommandId("ToGgLe ReVieW mOdE");
```

Also see, [Cmd\(\)](#).

**FindCommandName(*CommandID*)** Translates a CommandID into an appropriate Command Name for the current language set in Sibelius and returns that Command Name as a string. If no match is found, an empty string will be returned.

For example:

```
Sibelius.FindCommandName("toggle_review_mode");
```

**GetListOfCommandNamesInCategory(*Localized Command Category Name*)** Returns a sparse array of all External Localized Command Names (in alphabetical order). For example:

```
fileTabCommands = Sibelius.GetListOfCommandNamesInCategory("File Tab")
```

### Variables

**AvailableCommands** Returns a sparse array of all available CommandIDs in alphabetical order.

**CommandCategories** Returns a sparse array of all Command Categories in the local language (in system order).



Technical Support (USA)  
Visit the Online Support Center  
at [www.avid.com/support](http://www.avid.com/support)

Product Information  
For company and product information,  
visit us on the web at [www.avid.com](http://www.avid.com)