



What's New in EuControl 2023.6

For Avid EuControl Control Surfaces



Legal Notices

© 2023 Avid Technology, Inc., ("Avid"), all rights reserved. This guide may not be duplicated in whole or in part without the written consent of Avid.

For a current and complete list of Avid trademarks visit: <http://www.avid.com/legal/trademarks-and-other-notices>

Bonjour, the Bonjour logo, and the Bonjour symbol are trademarks of Apple Computer, Inc.



Confidential unpublished works. Copyright 2020 Dolby Laboratories. All rights reserved.
Dolby, Dolby Atmos, and the double-D symbol are registered trademarks of Dolby Laboratories Licensing Corporation.

Thunderbolt and the Thunderbolt logo are trademarks of Intel Corporation in the U.S. and/or other countries.

This product may be protected by one or more U.S. and non-U.S. patents. Details are available at www.avid.com/patents.

Product features, specifications, system requirements, and availability are subject to change without notice.

Guide Part Number 9329-66497-00 REV B 06/23

Contents

- Introduction 1
 - System Requirements and Compatibility 1
 - Software Installation 2
 - About this Guide 2
 - How to Use this PDF Guide 3
 - Resources 3
- New Features in EuControl 2023.6 4
 - Applications Tab in EuControl Settings 5
 - Inter-Application Soft Keys 6
 - Expanded Rec/A Switch Mode Settings for Dock, S1, S3, Artist Mix, and Artist Control 7
 - Improved Feedback for Soft Key Switch LEDs and Buttons 7
 - Avid Control Remote Mode 8
 - Pro Tools Markers in Avid Control 9
 - Automation LEDs in Channel View 11
 - Channel View Display of EQ or DYN Plug-In Names While Cycling 11
 - Additional Pro Tools Channel Width Panner Formats 11
 - Avid Control Function Recall Improvements 11
 - S1 Soft Keys on Avid Control Desktop 12
 - Import Compatible Custom Appset 13
 - Enabling EUCON in Pro Tools 2022.12 and Later 14
- EuControl 2023.6 Release Notes 15
 - What's Fixed in EuControl 2023.6 15
 - What Was Fixed in Previous Versions of EuControl 15
 - Updating Firmware on EuControl Surfaces 16

Chapter 1: Introduction

This document describes the new and changed features in EuControl software version 2023.6 for Avid S1, S3, Dock, Control app, and Artist Series media controllers for Avid Pro Tools® and other EUCON™-aware applications. For information about fixed and known issues, see [EuControl 2023.6 Release Notes](#). To get the latest version of EuControl software for the Control app, S1, S3, Dock, and Artist Series, download it from your [Avid Account](#).

System Requirements and Compatibility

Avid can only assure compatibility and provide support for hardware and software it has tested and approved. For the latest information about operating system requirements, compatible DAWs and other applications, and links to additional resources, visit [EUCON Compatibility](#).

DAW Compatibility At the time of this writing, EuControl Software v2023.6 is compatible with the following (or later versions):

- Avid Pro Tools Intro, Artist, Studio, or Ultimate 2023.3 (Pro Tools 2023.6* required for some features and fixes)
- Adobe Audition and Premiere
- Steinberg Nuendo 11 and Cubase 11 and later
- Apple Logic 10
- Magix Sequoia 14
- Merging Pyramix 8.x (Native only), Pyramix 9.x and later
- Avid XMON S6
- Pro Tools | MTRX, and ProMon (DADman) for Pro Tools | MTRX, MTRX Studio, and NTP Technology AX32
- SoundFlow 5.4.0 or later
- GroundControl Sphere from Ginger Audio

***Pro Tools and Native Apple Silicon** Be aware of the following when using Pro Tools 22.12 or later:

- When running Pro Tools 2022.12 or later natively on Apple Silicon Macs, the previously available **Ethernet Controllers** tab in Pro Tools Setup > Peripherals is no longer provided (use the EUCON controls in the Edit window Toolbar to toggle EUCON on or off, and to see status as described in [Enabling EUCON in Pro Tools 2022.12 and Later](#)).
- When running under Rosetta the Ethernet Controllers tab remains available to enable EUCON (in addition to the new Edit window Toolbar controls for EUCON).

Avid Control and EuControl Compatibility To get all the latest features and most reliable performance, keep Avid Control and EuControl software at the same versions (such as Avid Control 2023.6 and EuControl 2023.6). Beginning with EUCON 2022.12, the previous (older) version of Avid Control can be used with the next higher version of EuControl software (such as Avid Control 2022.9 with EuControl 2022.12). This makes it easier to take advantage of automatic software update utilities without worrying about temporary compatibility issues while waiting for the Control app to be processed and published on-line by the hosting site (such as the App Store). When using a previous Avid Control with newer EuControl software, functionality will be limited to the features available in that version of Avid Control, and stability may be less reliable than when all versions are the same.

macOS Privacy Settings On macOS 10.15 (“Catalina”) and later you will be prompted to add applications such as EuControl, MC_Client, and Pro Tools to the Privacy list in System Preferences. If so, follow the on-screen instructions to add them (if you do not, EuControl will not be able to communicate keyboard shortcuts within Soft Keys). If you experience unexpected behavior with Soft Keys that include keyboard shortcuts after adding EUCON software to the Privacy list, try the following:

- 1 Open System Preferences (or System Settings in Ventura) and go to the Security & Privacy.
- 2 Go to the Privacy tab, then select Accessibility in the list to the left.
- 3 Remove all EUCON software from the Accessibility list to the right.

- 4 Add all EUCON software back to the Accessibility Privacy list.

EUCON Development Partners For setup and configuration instructions for several applications from EUCON Development Partners, see the *EUCON Application Setup Guide.pdf*, available for download from your Avid account. Please note that while these applications are EUCON-enabled, the extent of integration with Avid control surfaces and supported software versions are at the sole direction of the respective manufacturer. For details, please contact the manufacturer.

Software Installation

To install your controller as well as EuControl software, follow the instructions in the most recent editions of the following guides for your unit(s):

Guide	Description
Avid Control Guide.pdf	Installation instructions, overview of controls and features, and hardware specifications
Avid Dock Guide.pdf	Installation instructions, overview of controls and features, and hardware specifications
Avid S1 Guide.pdf	Installation instructions, overview of controls and features, and hardware specifications
Avid S3 Guide.pdf	Installation instructions, overview of controls and features, AVB audio capabilities, and hardware specifications
Using EuControl Surfaces.pdf	Comprehensive operations guide for all controllers that explains track and session basics, recording, plug-ins and sends, mixing, and more including explanations of all EuControl Settings and examples of how to use and customize Soft Keys
EUCON Application Setup Guide.pdf	Setup and configuration instructions for applications from EUCON Development Partners
EUCON Networking Guidelines.pdf	Guidelines and diagrams for suggested configurations for best network performance.

You can download all EuControl documentation from this article on our Knowledge Base: [EUCON Product Guides](#)

About this Guide

All of our guides use the following conventions to indicate menu choices and key commands:

Convention	Action
File > Save	Choose Save from the File menu
Control+N	Hold down the Control key and press the N key
Control-click	Hold down the Control key and click the mouse button
Right-click	Click with the right mouse button

The names of **Commands**, **Options**, and **Settings** that appear on-screen are in a different font. The names of switches and keys on the control surface are shown in bold (such as **Select**). In addition, the **SHIFT** switch on S1, S3, and Dock is always shown in bold to distinguish it from the Shift switch on the computer keyboard.

The following symbols are used to highlight important information:



User Tips are helpful hints for getting the most from your system.



Important Notices include information that could affect your data or the performance of your system.



Shortcuts show you useful keyboard or mouse shortcuts.



Cross References point to related sections in this guide and other Avid guides.

How to Use this PDF Guide

These are some useful features of this PDF:

- The Bookmarks on the left serve as a continuously visible table of contents. Click on a subject heading to jump to that page.
 - Click a + symbol to expand that heading to show subheadings. Click the – symbol to collapse a subheading.
- The Table of Contents provides active links to their pages. Select the hand cursor, allow it to hover over the heading until it turns into a finger, then click to locate to that subject and page.
- All cross references in [blue](#) are active links. Click to follow the reference.
- Select Find from the Edit menu to search for a subject.

Resources

The Avid website (www.avid.com) is your best online source for information to help you get the most out of your Avid system. The following are just a few of the services and features available.

Account Activation, Product Registration, and License Activation

Activate your product to access downloads in your Avid account (or create an account if you don't have one). Activate your software license here:

<https://my.avid.com/products/redemption>

Get Started Fast Video Tutorials

Watch video tutorials for the Control app, Dock, S1, S3, and other EuControl products on YouTube:

[Get Started Fast with Pro Tools | Control, S3, and Dock](#)

[Avid S1 Playlist](#)

For S6, check out the new [Avid Pro Tools | S6 Workflows](#) and original [Get Started Fast with S6](#) video tutorials.

You can find more videos, including the latest workflow tutorials, on the Avid website. Go to www.avid.com, view Products and select Pro Mixing. Follow the links for your controller and check the Learn and Support listings for video resources.

Support and Downloads

Contact Avid Customer Care (technical support); download software updates and the latest online manuals; browse the Compatibility documents for system requirements; search the online Knowledge Base or join the worldwide Avid user community on the User Conference. For example, for Pro Tools | Control resources visit:

<https://www.avid.com/learn-and-support>

For user guides for Avid Control, S1, S3, Dock, and Artist Series media controllers, visit:

[EUCON Product Guides](#)

For setup and configuration instructions for several applications from EUCON Development Partners, see the *EUCON Application Setup Guide.pdf*.

For S6 support, trouble-shooting, and downloads, visit:

[Avid S4 and S6 Support](#)

Products and Developers

Learn about Avid products; download demo software or learn about our Development Partners and their plug-ins, applications, and hardware. <https://www.avid.com/Products/index.html>

News and Events

Get the latest news from Avid or sign up for a demo.

Chapter 2: New Features in EuControl 2023.6

EuControl Surfaces

- [Applications Tab in EuControl Settings](#)
- [Inter-Application Soft Keys](#)
- [Expanded Rec/A Switch Mode Settings for Dock, S1, S3, Artist Mix, and Artist Control](#)
- [Improved Feedback for Soft Key Switch LEDs and Buttons](#)

Avid Control

- [Avid Control Remote Mode](#)
- [Pro Tools Markers in Avid Control](#)
- [Automation LEDs in Channel View](#)
- [Channel View Display of EQ or DYN Plug-In Names While Cycling](#)
- [Additional Pro Tools Channel Width Panner Formats](#)
- [Avid Control Function Recall Improvements](#)
- [Import Compatible Custom Appset](#)

Avid Control Desktop

- [S1 Soft Keys on Avid Control Desktop](#)

General

- [Enabling EUCON in Pro Tools 2022.12 and Later](#)

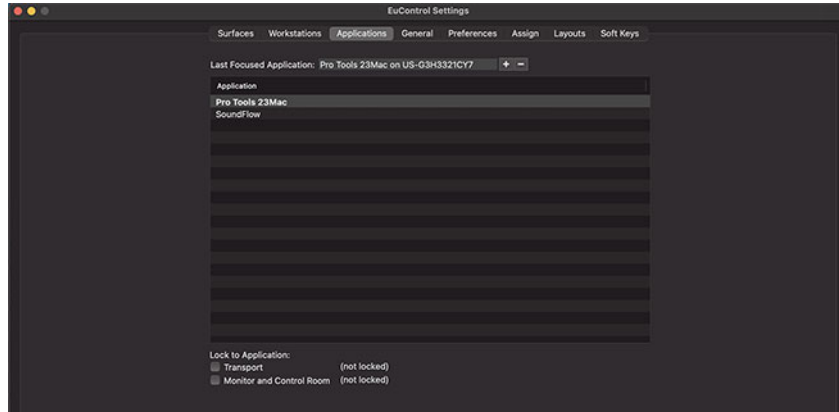
Applications Tab in EuControl Settings

(Filtered Applications List for Improved Application Switching and Locking)

The new Applications tab in EuControl Settings lets you specify which applications you want EuControl to recognize as available for EUCON application focus and inter-application Soft Key assignment.

If you frequently move between two or more different applications (such as Pro Tools and DADman, email, or others) you can use the Application list to control which applications EUCON can focus on and which it will ignore. This simplifies multi-application workflows and improves performance by preventing EuControl devices from going blank when you switch to a browser to reply to an email, then jumping back when you return to Pro Tools.

The list also determines application availability in the Soft Key Command Editor (for more information, see [Inter-Application Soft Keys](#)).



Applications tab in EuControl Settings

To configure the Filtered Applications List:

- 1 In EuControl Settings, navigate to the Applications tab.
- 2 Make sure the desired application is listed as the Last Focused Application at the top. If it is not, switch your computer focus to the desired application, then return immediately to EuControl Settings.
- 3 Click the plus sign (+) to the right of the Last Focused Application to add that app to the list. To include other applications, repeat steps 2 and 3 to focus and then add the other application(s).

Applications Tab Overview

The Applications tab includes the following elements.

Item	Description
Last Focused Application	Displays the most recently focused application. The + and – buttons add or remove that application to or from the Application list.
Application List	Shows applications that have been added as available for EUCON application focus.
Lock to Application	As available previously, these settings let you lock the Transport and/or Monitor and Control Room sections to specific application(s). For example, locking the Transport to Pro Tools means your control surfaces maintain control of Pro Tools even when you move to (focus) a different application, such as DADman or MBOX Control. Applications do not need to be added to the Application List in order to lock Transport or Monitor and Control Room controls. Add applications such as DADman only if you want to be access its channels; if you only need Monitor (level) control, lock to DADman but do not add it to the Application List.

Inter-Application Soft Keys

(Soft Keys for SoundFlow and Other Non-Focused Applications)

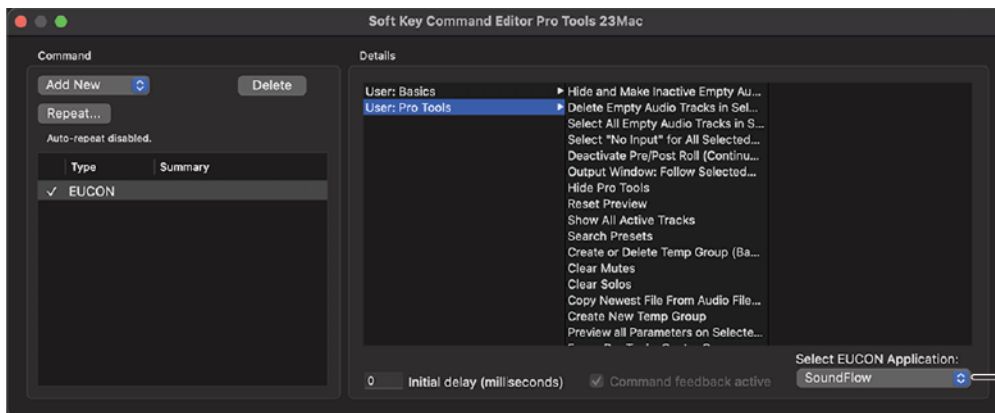
You can include Soft Keys from other applications in the appset for the currently focused application. The EuControl Soft Keys Command Editor lets you choose from not just the commands available in the currently focused application, but also from other EUCON-ized applications running on the same computer. Supported applications do not need to be focused to be available for assignment or for using its Soft Keys.

For example, you could add a SoundFlow Soft Key to your Pro Tools appset, letting you trigger SoundFlow macros and events from the Control app or surface Soft Keys without having to switch controller focus. You can also trigger commands to multiple DAWs in one EuControl Soft Key macro.

💡 *Requires SoundFlow 5.4.0 or later.*

To include Soft Keys from other applications:

- 1 Make sure all the desired applications are running.
- 2 Go to EuControl Settings > Soft Keys.
- 3 Click the Section selector and choose the section of switches containing the switch you want to reassign.
- 4 On-screen double-click the switch or Touchscreen Soft Key you want to reassign. The Soft Key Command Editor window opens, showing the switch's current assignment (if any).
- 5 In the Command area, click Add and choose EUCON. After you add a EUCON command, choices appear in the Details area.
- 6 Choose an available application from the Select EUCON Application selector. The currently focused application (such as Pro Tools) is chosen by default. The list of available applications is determined by the configuration of the Applications tab (see [Soft Keys and the Applications List](#)).



Select EUCON Application in the Soft Key Command Editor

- 7 Click a command to assign a command, or click an item with an arrow to reveal more commands in the next column.
- 8 Close the Soft Key Command Editor and return to the EuControl Settings window.
- 9 Click the Save button in the Soft Keys tab. The assignments are saved to the appset of the currently focused application.
- 10 If you then want to be able to work in that other application (such as SoundFlow) without it taking control surface focus, remove that application from the Application list.

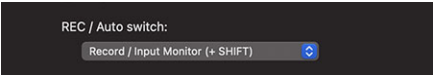
Soft Keys and the Applications List

In the Soft Key Command Editor, the list of available applications is determined by the configuration of the [Applications Tab in EuControl Settings](#):

- When one or more applications have been added to the list of filtered Application, only those applications that are EUCON-ized are available.
- When no applications have been added to the list, all EUCON-ized applications are available.

Expanded Rec/A Switch Mode Settings for Dock, S1, S3, Artist Mix, and Artist Control

The strip **Rec/A** switch can be configured in EuControl Settings > General to provide different pairs of functions in its primary and **Surface SHIFT** layers. Available functions include Automation mode cycling, track Record Enable toggle, track Input Monitor toggle, and automation Trim mode.




Rec/A Switch setting in the General tab of EuControl Settings

The following table lists the layers and functions for the **Rec/A** switch.

Rec/A Switch Settings and Functions

Setting	Layer		Notes
	Primary Function	Surface SHIFT Function	
Record / Automation Mode (+ SHIFT)	Track Record Enable	Automation Mode cycle	Default
Automation mode / Record (+ SHIFT)	Automation Mode cycle	Track Record Enable	New in EUCON 2022.12
Record / Input Monitor (+ SHIFT)	Track Record Enable	Track Input Monitor	
Automation Mode / Trim (+ SHIFT)	Automation Mode cycle	Trim Automation mode	New in EUCON 2023.6

When a track is Input Monitor enabled, the strip OLED displays a letter “i.”

 *This global setting applies to the switches labeled **Rec/A** on the Dock, S1, and S3, and labeled **Rec/Auto** on Artist Mix and Artist Control.*

Soft Key for Rec/A The REC Auto Switch setting is available as a Surface command in the Soft Key Command Editor. If you used the previously available Surface Soft Key labeled Rec-Auto Changes Automation, + Shift Enables Rec, it toggles between the two new switch modes described above.

Improved Feedback for Soft Key Switch LEDs and Buttons

Switch LEDs and on-screen buttons now illuminate to provide better feedback about their Soft Key assignment and status.

Beginning in 2023.6, all switch LEDs and buttons light dimly when assigned to any command (whether a Key, EUCON, Surface, or Wheel command). In addition, LEDs and buttons light briefly when pressed for confirmation.

Soft Key colors are assigned automatically, but can be overridden using the Color controls in the Soft Key Command Editor.

Avid Control Remote Mode

(Enable Two Master Tablets)

Avid Control tablets can be configured as Master, Hybrid, or Meters tablets. Beginning in EuControl 2023.6 you can also designate one tablet to operate in *Remote* mode.

Avid Control Remote provides a counter in the upper left, monitoring controls across the upper area, the primary Soft Keys view in the center, and transport controls across the lower section.



Avid Control Remote mode

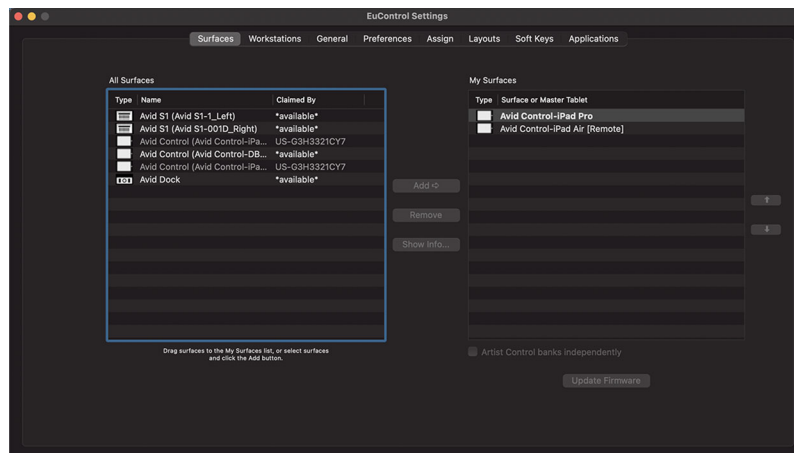
Remote mode does not change views (other than viewing different pages of Soft Keys) for constant and consistent access to essential functions and all Soft Keys. Use Remote mode to listen through different monitor sets, apply Soft Keys, and control playback from anywhere in the room without having to change views or move the Master tablet.

You designate a tablet as Avid Control Remote by adding a second Master tablet to the My Surfaces list (see [Designating a Tablet for Avid Remote](#)).

Designating a Tablet for Avid Remote

To designate one Master and one Remote tablet:

- 1 Go to EuControl Settings > Surfaces, and make sure one Control app tablet is already added as a Master tablet in the Surfaces and Master Tablet column of My Surfaces.
- 2 Select and drag another available Control app from All Surfaces to an empty row in My Surface. That Control app is shown with [Remote] added to the surface name in My Surfaces.



One Master tablet and one Remote tablet

Pro Tools Markers in Avid Control

Avid Control in Master or Hybrid mode can show the Pro Tools Marker ruler (Memory Locations) and/or Track Markers at the top or bottom of the screen, in all views. This lets you use the Control app to navigate among session markers by tapping a marker. You can also zoom the marker view, see Marker comments, and view both Track markers and Ruler marker colors simultaneously.

💡 *Track Markers require Pro Tools 2023.6 or later.*



Markers Timeline in Avid Control (Mixer view shown)

To show Pro Tools Markers:

- 1 Tap the Gear icon in Avid Control.
- 2 In the Universe & Markers settings, locate the Markers View position on the screen setting and choose N (not visible/off), T (Top), or B (Bottom).
- 3 To show Track Markers instead, locate the Displayed Marker Type setting and choose T (Track). Display of Track markers follows the currently attentioned track. (These settings are also available as Soft Keys. See [Displayed Marker Type](#).)

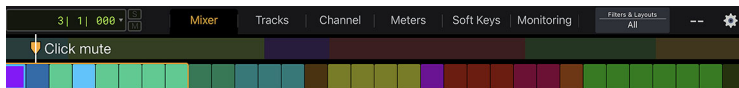
To choose Ruler or Track markers:

- In the Universe & Markers settings, locate the Displayed Marker Type setting and choose R (Ruler markers) or T (Track markers).

To be able to view both Ruler and Track markers simultaneously:

- In the Universe & Markers settings, locate the Show Ruler Markers Colors Behind Track Markers and choose On or Off.

When enabled, the Markers view shows the names of Track markers in the currently attentioned track, with color backgrounds corresponding to Ruler markers. You can customize brightness for color backgrounds in [Universe and Markers Settings](#).



One Track marker and colors of Ruler markers

To navigate using the Pro Tools Marker Timeline:

- Tap a Marker.

To zoom the Marker Timeline:

- 1 Double-tap on the Marker Timeline to zoom 2x (the default zoom setting).
- 2 To set a different zoom value, see [Universe and Markers Settings](#). (Zoom settings are also available as Soft Keys. See [Marker timeline zoom level](#).)

To view the Comments for a Marker:

- Tap and hold the Marker. (To return to Marker display, tap again.)



Marker Comment displayed in Markers view

Universe View Position Setting

Beginning in EUCON 2023.6 you can set the Universe view to be displayed at the top, left, or bottom of Avid Control.

To configure Universe View position:

- Tap the Gear icon in Avid Control, then in the General settings, locate the Universe View Position on the screen setting and choose T (Top), L (Left), or B (Bottom).

Universe and Markers Settings

Beginning in EUCON 2023.6, the following settings let you customize the display of the Universe view and Markers timeline.

Display Detailed Universe Lets you show or hide display of meters and clip status for each strip in the Universe Scroller. When shown, Universe meters show the highest meter value for all paths or sub-paths (also known as “legs”) on each track.

Universe View Position on the Screen Lets you position the Universe view at the top, left, or bottom of the screen.

Marker timeline position on the screen Lets you turn the Pro Tools Marker timeline display on or off, and (when shown) position it at the top or bottom of the screen.

Marker timeline zoom level Lets you turn Marker timeline zoom on or off. When on, double-tapping the Marker timeline zooms to 2x, 4x, 8x, or 16x. These settings are also available as Soft Keys.

Surface Soft Keys for Avid Control Marker Zoom

Command	Level 1	Level 2	Level 3
Marker Timeline Zoom	Avid Control >	Marker Timeline Zoom >	Cycle Selection
			No Zoom
			2x Zoom
			4x Zoom
			8x Zoom
			16x Zoom

Displayed Marker Type Lets you show the Pro Tools Marker ruler (R), or Track Markers for the currently attentioned track (T).

Surface Soft Keys for Avid Control Displayed Marker Type

Command	Level 1	Level 2	Level 3
Displayed Marker Type	Avid Control >	Displayed Marker Type >	Cycle
			Show Ruler Markers
			Show Track Markers

Show Ruler Marker Colors Behind Track Markers When enabled, shows the name of Track markers in the currently attentioned track, and colors from Ruler markers.

Marker Background Colors Brightness Determines the brightness of the colors shown behind the markers.

Timeline follows Playhead When on, the timeline centers around the playhead (when the transport is stopped).

Automation LEDs in Channel View

In Channel View, each knob provides track automation indicator LEDs. The upper red and lower green LEDs indicate automation status the same as the similar hardware LEDs on EUCON control surfaces.



Automation Indicator LEDs

Channel View Display of EQ or DYN Plug-In Names While Cycling

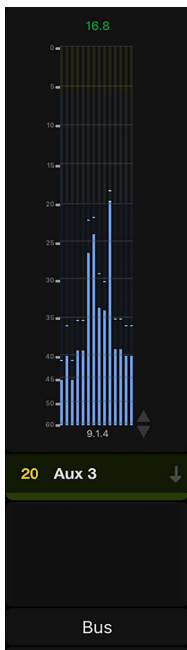
(Requires Pro Tools 2023.3 or Later)

When cycling through EQ or Dynamics plug-ins, the name of the currently focused plug-in is shown in the graph.

Additional Pro Tools Channel Width Panner Formats

EUCON 2023.6 supports all channel width formats available in Pro Tools 2023.6 and later, such as 5.1.2, 7.1.4, and 9.1.6 (as well as many other contemporary formats). All legs (individual channels within a multi-channel element) are shown in Mixer, Track, and Meters views.

For more information on available formats, in Pro Tools choose Help > Pro Tools Help.



Example 9.1.4 Aux meter

Avid Control Function Recall Improvements

The Function Recall Mode selector in Settings > Channel View lets you choose None (Off), so that the current function does not change as you select and attention different tracks. This matches the functionality of the Function Recall Mode setting for hardware control surfaces in EuControl Settings > General (introduced in EUCON 2022.12).

S1 Soft Keys on Avid Control Desktop

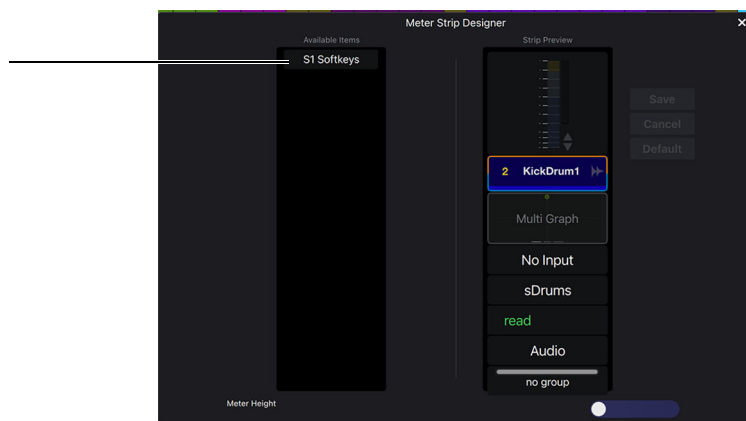
Avid Control Desktop can show the Soft Keys (if any) assigned to its associated S1, to trigger S1 Soft Keys using a mouse and the Avid Control Desktop screen. Soft Keys on Avid Control Desktop are configured in its Meter Strip Designer.



S1 Soft Keys in Avid Control Desktop

To have S1 Soft Keys on Avid Control Desktop:

- 1 In EuControl Settings > Surfaces, configure the My Surfaces list with Avid Control Desktop (for more information see the *Using EuControl Surfaces.pdf*):
 - One or more S1s must already be present in the My Surfaces list. Unlike Avid Control for iOS and Android, Avid Control Desktop cannot be used standalone, and cannot be used without a supported hardware control surface (see below).
 - As long as there is one S1 that is *not* linked to a tablet for Meters mode, one instance of Avid Control Desktop can be added to provide Meters mode for the unlinked S1. When two or more S1s are connected (or one S1 is not linked to a Meters tablet) you can combine one or more tablets running Avid Control app for iOS/Android with one instance of Avid Control Desktop.
 - Note that only one instance of Avid Control Desktop can be used at any time.
- 2 In the Soft Keys tab of EuControl Settings, configure the S1 Color Keys and pages as desired.
- 3 In Avid Control Desktop, choose Avid Control Desktop > Meter Strip Designer, then add the S1 Softkeys block from the Available Items list into the Strip Preview.



S1 Soft Keys in the Available Items list of the Avid Control Desktop Meter Strip Designer

- 4 Click Save.

Import Compatible Custom Appset

This dialog is intended to help bring any custom appsets you created in an older version of Pro Tools or other DAW into a newer version of Pro Tools or other DAW.

(Custom appsets are Soft Key assignments that you have added or edited from the default assignments. The default appset is the appset supplied by Pro Tools or the EuControl installer.

For example, let's say you have a custom appset for Pro Tools 2022.12 then upgrade to Pro Tools 2023.3. When you first launch EuControl and Pro Tools 2023.3, EuControl will show this dialog to let you choose whether to import your previous appset (from 2022.12) OR load the default (dynamic appset supplied by Pro Tools or the EuControl installer) for 2023.3.

What the documentation has failed to explain clearly is that this dialog will keep being displayed until you do both of the following: (1) Import your custom appset. and then (2) save it (in EuControl Settings > Soft Keys, click Save) to update your custom appset to the current version (such as 2023.6).

If you do not select "Don't show again" and you do NOT save the loaded appset, it will keep asking you each time you run and connect EuControl to that same DAW (such as Pro Tools 2023.3).

Note: If you do choose to load either your older custom appset or the new default appset and save it, but the dialog continues to be displayed, this most likely means you erased all your files and EuControl registry settings.

Enabling EUCON in Pro Tools 2022.12 and Later

When running Pro Tools 2022.12 or later natively on Apple Silicon Macs, the previously available Ethernet Controllers tab in Pro Tools Setup > Peripherals is no longer provided (use the EUCON controls in the Edit window Toolbar to toggle EUCON on or off, and to see status).

When running under Rosetta the Ethernet Controllers tab remains available to enable EUCON (in addition to the Edit window Toolbar controls for EUCON introduced in Pro Tools 2022.12).

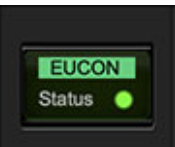
To show EUCON controls in the Edit window:

- 1 Do one of the following:
 - Click the Edit Window Toolbar menu (in the upper-right corner of the window).
 - Right-click in the Toolbar.
- 2 From the menu, select EUCON.



Selecting EUCON in the Edit window Tool bar menu

EUCON controls are shown in the Tool bar.



EUCON in the Edit window Tool bar

To turn EUCON on or off:

- Click the EUCON button. EUCON is enabled when the background is lit green with black text.

The Status LED indicates EUCON communication status as shown in the image and table below (you can also hover over the LED to view a Tool Tip, if enabled in Pro Tools Preferences):



EUCON status indication

Pro Tools EUCON Status Indication

Image	Status
1	EUCON is off (not enabled)
2	EUCON is enabled but not connected to an Avid control surface
3	EUCON is enabled and connected to a control surface
4	EUCON is enabled but a communication or connection failure may have occurred (this warning clears after 5 seconds)
5	EUCON is enabled but an unrecoverable error has occurred (such as a network packet loss, crash of EuControl, or other). The indicator flashes red until clicked, after which it stays lit red until the error is resolved.

Chapter 3: EuControl 2023.6 Release Notes

for EuControl Software and Avid S1, S3, Dock, Control app, and Artist Series Control Surfaces

This document describes the fixed and known issues in EuControl 2021.10 for Avid S1, S3, Dock, Avid Control app, and Artist Series control surfaces.

What's Fixed in EuControl 2023.6

General

- In the Soft Key Command Editor (EuControl Settings > Soft Keys), the Summary and Label could show incorrect information (GWSW-165334)
- Custom Wheel functions could fail to function after focusing away from Pro Tools and then back (GWSW-16532)
- On Windows (only), the Soft Key Command Editor no longer allows typing in a Jump to Page number (use the drop-down list instead (GWSW-16518)
- On Mac (only), it was possible for the Workstation tab to display an empty My Workstations list (GWSW-16474)
- It was possible for control surface Knob displays to show Add EQ? (or DYN) even after a plug-in was added (GWSW-16468)
- In EuControl Settings > Workstations, it was possible that the check mark (indicating focused workstation) could fail to redraw immediately when using an Artist Mix or Artist Control to toggle workstations (GWSW-15543)

Avid Control

- Channel knob automation Read mode LEDs would sometimes only work on the right side of the screen (GWSW-16711)
- It was possible for Soft Keys view to continue to show Soft Keys after quitting an application (GWSW-16655)
- It was possible for Soft Keys view to jump to page 1 after swiping too quickly after pressing a Soft Key (GWSW-16629)
- Pan Graphs could fail to appear be displayed for stereo Routing Folders (GWSW-16522)
- Nuendo: It was possible for Pan dots to fail to be displayed on systems with an S1 (GWSW-15941)

S1

- Flipped pan controls could fail to go to 100, some stopped at 99 (GWSW-16686)

Artist Series

- With Artist Control, it was possible for plug-in pages to revert to first page when attentioning another track (GWSW-16702)

What Was Fixed in Previous Versions of EuControl

What Was Fixed in EuControl 2022.12.1

EuControl Software and Surfaces

- It was possible to end up with duplicate Soft Keys after importing an appset saved in an earlier version of EuControl (GWSW-16441)
- Dynamic Soft Key names (such as Memory Locations and Layouts) could fail to update correctly in the Soft Key Command Editor displays (GWSW-16440)

Avid Dock

- It was possible for the Wheel modes to stop functioning after focusing away from a DAW and then back (GWSW-16465)

Avid Control

- Avid Control and other surfaces could sometimes freeze (GWSW-16446)

What Was Fixed in EuControl 2022.12

General

- Nudging to extreme right could lead to unexpected banking or bank indication (GWSW-15788)
- On Windows, the Show Fader Values menu could fail to function properly (GWSW-16235)
- Using a backslash '\' in the Summary of a Soft Key Command would not always save after closing the Soft Key Command Editor window (GWSW-16168)
- It was possible for a Soft Key command to fail to function correctly if any part of the command was reassigned while the switch or button was engaged or held down (GWSW-16171)

Avid Control

- It was possible for Soft Keys to fail to function after swiping to change Soft Key pages in Avid Control or Avid Control Desktop (GWSW-16222)
- It was possible for Send knobs to fail to be displayed in Channel View after moving Sends slots in (GWSW-16217)
- It was possible for the Automation LED in Channel View to fail to flash while automation was writing (GWSW-16178)
- It was possible for Soft Keys to fail to update after being used for Assignable Knob (GWSW-15823)
- It was possible in Channel view for the Control selector to display unavailable commands (GWSW-15809)
- It was possible for Channel view to be unable to correctly communicate with the currently attentioned track if it was inside a closed Folder track (GWSW-15596)

S1

- S1 Soft Key colors could fail to display correctly (GWSW-15857)
- It was possible for the Track Color keys to be difficult to fail to adequately display darker color assignments (GWSW-15698)

S3

- When the Open Windows... settings were set to Channel mode, it was possible for functions from the lower knobs to be flipped to the upper knobs (GWSW-16134)
- Lower S3 **Aux** light could become unlit when touching a send on upper encoders (GWSW-16014)
- It was possible for the Upper OLEDs to incorrectly follow the Lower OLED mode when attentioning a new channel while the Lower knobs were in Channel mode (GWSW-15718)

What Was Fixed in EuControl 2022.4

Avid Control


- When using Avid Control on a phone in portrait mode, it was possible for the In indicator to remain lit at all times (GWSW-15678)
- In Custom Knob Assign mode, the view could jump back to page 1 after adding a new page (GWSW-15676)
- When changing the Pan Knob Color option, it was possible for the colors to not immediately update (GWSW-15536)

Updating Firmware on EuControl Surfaces

To update firmware:

- 1 After updating EuControl software, click (Mac) or double-click (Windows) the EuControl icon and select EuControl Settings.
- 2 If necessary, click **Surfaces** to display the Surfaces tab.

- 3 Click a surface in the My Surfaces list so it is highlighted. If multiple surfaces are listed in the My Surfaces list, make sure only one surface is highlighted.

 *Firmware must be updated on each surface separately. Updating firmware on multiple devices at the same time is not supported.*

- 4 Click Update Firmware.
- 5 Follow the instructions in the Update Firmware dialog box to proceed, and make sure to observe the following guidelines:
 - Ensure that all surfaces are connected to a trustworthy power source.
 - Do not power off the surface during the update or attempt to interrupt the update.
 - The status of the firmware update is shown in the EuControl dialog, and on the surface displays.
- 6 Click Done when the firmware update is complete. Repeat this procedure for each surface in your system.



Technical Support (USA)
Visit the Online Support Center
at www.avid.com/support

Product Information
For company and product information, visit
us on the web at www.avid.com