



Avid EUCON Software

Version 2025.3 Release Notes

1 Introduction

This document describes the new and changed features in EUCON™ software version 2025.3 for Avid S1, S3, S4, S6, Dock, Control app, and Artist Series media controllers for Avid Pro Tools® and other EUCON-aware applications.

For information about fixed and known issues, see ["EUCON 2025.3 Release Notes" on page 8](#).

To get the latest version of EuControl software for the Control app, S1, S3, Dock, and Artist Series, download it from your [Avid Account](#).

System Requirements and Compatibility

Avid can only assure compatibility and provide support for hardware and software it has tested and approved. For the latest information about operating system requirements, compatible DAWs and other applications, and links to additional resources, visit [EUCON Compatibility](#).

DAW Compatibility

At the time of this writing, EuControl Software v2025.3 is compatible with the following (or later versions):

- Avid Pro Tools Intro, Artist, Studio, or Ultimate 2024.6 (Pro Tools 2024.10 required for some features and fixes)
- Adobe Audition and Premiere
- Steinberg Nuendo 11 and Cubase 11 and later
- Apple Logic 10
- Magix Sequoia 14
- Merging Pyramix 8.x (Native only), Pyramix 9.x and later
- Avid XMON S6
- Pro Tools | MTRX, and ProMon (DADman) for Pro Tools | MTRX, MTRX Studio, MTRX II, and NTP Technology AX32
- SoundFlow 5.4.0 or later
- GroundControl Sphere from Ginger Audio

Pro Tools and Native Apple Silicon

Be aware of the following when using Pro Tools 2022.12 or later:

- When running Pro Tools 2022.12 or later natively on Apple Silicon Macs, the previously available **Ethernet Controllers** tab in Pro Tools **Setup > Peripherals** is no longer provided (use the EUCON controls in the Edit window Toolbar to toggle EUCON on or off, and to see status).
- When running under Rosetta the Ethernet Controllers tab remains available to enable EUCON (in addition to the new Edit window Toolbar controls for EUCON).

Avid Control and EuControl Compatibility

To get all the latest features and most reliable performance, keep Avid Control and EuControl software at the same versions (such as Avid Control 2023.6 and EuControl 2023.6). Beginning with EUCON 2022.12, the previous (older) version of Avid Control can be used with the next higher version of EuControl software (such as Avid Control 2022.9 with EuControl 2022.12). This makes it easier to take advantage of automatic software update utilities without worrying about temporary compatibility issues while waiting for the Control app to be processed and published on-line by the hosting site (such as the App Store). When using a previous Avid Control with newer EuControl software, functionality will be limited to the features available in that version of Avid Control, and stability may be less reliable than when all versions are the same.

macOS Privacy Settings

On **macOS 10.15 (“Catalina”) and later** you will be prompted to add applications such as EuControl, MC_Client, and Pro Tools to the Privacy list in System Preferences. If so, follow the on-screen instructions to add them (if you do not, EuControl will not be able to communicate keyboard shortcuts within Soft Keys). If you experience unexpected behavior with Soft Keys that include keyboard shortcuts after adding EUCON software to the Privacy list, try the following:

1. Open **System Preferences** (or System Settings in Ventura) and go to the **Security & Privacy**.
2. Go to the **Privacy** tab, then select Accessibility in the list to the left.
3. Remove all EUCON software from the Accessibility list to the right.
4. Add all EUCON software back to the Accessibility Privacy list.

macOS Local Network Settings

On **macOS Sequoia 15 and later**, you’ll be prompted to allow applications like EuControl, MCCClient, and Pro Tools access to your Local Network in System Settings. Follow the on-screen instructions to grant access (if you do not, EUCON will not be able to communicate).

If you encounter connection issues or unexpected behavior, try these steps:

1. Open **System Preferences** (or System Settings in Ventura) and navigate to **Security & Privacy**.
2. Select **Local Network**.
3. Find all EUCON software, uncheck them, then check them again.
4. Restart your Mac.

EUCON Development Partners

For setup and configuration instructions for several applications from EUCON Development Partners, see the *EUCON Application Setup Guide*, available for download from your Avid account. Please note that while these applications are EUCON-enabled, the extent of integration with Avid control surfaces and supported software versions are at the sole direction of the respective manufacturer. For details, please contact the manufacturer.

Conventions Used in This Guide

All of our guides use the following conventions to indicate menu choices and key commands:

Convention	Action
File > Save	Choose Save from the File menu
Control+N	Hold down the Control key and press the N key
Control-click	Hold down the Control key and click the mouse button
Right-click	Click with the right mouse button

The names of **Commands**, **Options**, and **Settings** that appear on-screen are in a different font.

The following symbols are used to highlight important information:



User Tips are helpful hints for getting the most from your system.



Important Notices include information that could affect your data or the performance of your system.



Shortcuts show you useful keyboard or mouse shortcuts.



Cross References point to related sections in this guide and other Avid guides.

Resources

The Avid website (www.avid.com) is your best online source for information to help you get the most out of your Avid system. The following are just a few of the services and features available.

Account Activation and Product Registration

Activate your product to access downloads in your Avid account (or quickly create an account if you don't have one). Register your purchase online, download software, updates, documentation, and other resources.

<https://www.avid.com/account>

Support and Downloads

Contact Avid Customer Success (technical support); download software updates and the latest online manuals; browse the Compatibility documents for system requirements; search the online Knowledge Base or join the worldwide Avid user community on the User Conference.

[Avid Control Support](#)

[Dock Support](#)

[S1 Support](#)

[S3 Support](#)

For Artist Mix and other Artist Series media controllers visit:

[EUCON Compatibility](#)

Products and Developers

Learn about Avid products; download demo software or learn about our Development Partners and their plug-ins, applications, and hardware.

<https://www.avid.com/Products/index.html>

Video Tutorials

Watch the latest video tutorials for the Control app, Dock, S3, and other EuControl products on YouTube:

[Avid S1 Overview](#)

[Avid Control App](#)

[S3 + Dock Integrated Workflows](#)

For earlier EuControl hardware and software videos, watch the Get Started Fast videos:

[Get Started Fast with Pro Tools | S3 and Dock](#)

You can find more videos, including the latest workflow tutorials, on the Avid website. Go to www.avid.com, view **Products** and select **Pro Mixing**. Follow the links for your controller and check the **Learn and Support** listings for video resources.

User Guides

To install your controller as well as EuControl software, follow the instructions in the most recent editions of the following guides:

Guide	Description
Avid Control Guide	Installation instructions, overview of controls and features
Avid Dock Guide	Installation instructions, overview of controls and features, and hardware specifications
Avid S1 Guide	Installation instructions, overview of controls and features, and hardware specifications
Avid S3 Guide	Installation instructions, overview of controls and features, AVB audio capabilities, and hardware specifications
EUCON Application Setup Guide	Setup and configuration instructions for applications from EUCON Development Partners
Using EuControl Surfaces	Comprehensive operations guide for all controllers that explains track and session basics, recording, plug-ins and sends, mixing, and more including explanations of all EuControl Settings and examples of how to use and customize Soft Keys

You can download all EuControl documentation from this article on our Knowledge Base: [EuControl Product Guides](#).

2 New Features in EUCON 2025.3

EUCON 2025.3 provides new features for Avid Control, S1, S4 and S6 below.

Avid Control and S1

New and improved features for Avid Control include the following:

- [Hybrid Mode for S1 and Avid Control Sync Function Controls Preference](#)
- [Cubase/Nuendo Quick Controls Auto Channel Mode](#)
- [Function Recall Mode Update](#)

Hybrid Mode for S1 and Avid Control Sync Function Controls Preference

Avid Control in Hybrid mode now seamlessly integrates with the S1, allowing the S1's functions and knobs to mirror the currently selected function in Avid Control. This integration enhances your workflow, similar to how the Dock's 8 knobs operate, creating a more cohesive and streamlined experience.

When Hybrid mode is enabled, selecting a function on the S1 automatically updates Avid Control to reflect the same function and vice versa. This two-way synchronization speeds up adjustments and makes navigating your session more intuitive.

To enable this feature:

1. Open **Avid Control**.
2. Navigate to **Channel View** settings.
3. Enable the preference **Sync Function with S1**.

Once enabled, your S1 and Avid Control will work in harmony, providing a smoother and more responsive control experience.

Cubase/Nuendo Quick Controls Auto Channel Mode

When working with Cubase or Nuendo, Quick Controls will now automatically switch to **Channel mode** when activated, streamlining your workflow and making it easier to adjust track parameters directly from your control surface. This feature aligns Quick Controls with the behavior of EQ and DYN, creating a consistent and intuitive experience across knobsets.

Key Features include:

- Automatic Channel Mode Switching

When connected to Cubase or Nuendo, pressing and holding the Aux button on an S1, Mix, or S3 to activate Quick Controls will automatically switch the knobs into Channel mode. This behavior is similar to how EQ and DYN already function, providing a seamless and consistent experience.

- Simplified Configuration

No additional preference settings are required in EuControl for this feature. It is always enabled to make Quick Controls more intuitive for Cubase/Nuendo users.

- DAW-Specific Behavior

This feature is specific to Cubase and Nuendo. If another DAW uses the same knobset (Knobset 11), activating Quick Controls will not trigger Channel mode, preserving the intended functionality for other software.

Function Recall Mode Update

To enhance user experience and eliminate confusion, the Function Recall Mode preference has been updated for both Avid Control and EuControl. The step switch (3-state toggle) for Function Recall Mode has been removed from Avid Control, as it duplicated the control already available in EuControl. This change streamlines the interface, making it easier to manage settings without redundant options.

Avid S4/S6

New and improved features for Avid S4/S6 include the following:

- [Display Module Meter Scale Zoom](#)
- [Master Module Session Load Options Dialog Enhancements](#)

Display Module Meter Scale Zoom

A new meter zoom feature has been added to the Display Modules, allowing users to focus on specific sections of the meter scale. With this update, you can now zoom in on the Top, Middle, or Bottom 50% range of the current meter scale, making it easier to monitor precise levels in detail.

New Soft Keys for Meter Zoom

We've added four new Soft Keys for quick access to zoom options:

- Full Scale
- Top 50%
- Middle 50%
- Bottom 50%

How the Soft Keys Work:

- **Activate Zoom:** Press a Soft Key to enable the selected zoom mode.
- **Turn Off Zoom:** Press the same Soft Key again to return to Full Scale.
- **Switch Zoom Modes:** Press a different Soft Key to switch directly to another zoom range.

Separate Soft Key sets are available for:

- Channel Display Module
- Master Display Module/Meter
- Master Display Module/Post displays

Meter Display Behavior

When a zoom mode is active, the meter display updates to show only the relevant range:

- Tick marks and labels adjust to match the visible range.
- Meter bars fill the zoomed range, with peak or average values that exceed the range disappearing from view.



This feature enhances visibility for specific signal levels and makes it easier to focus on critical meter details, especially useful in post-production or when working with complex sessions.

Master Module Session Load Options Dialog Enhancements

A new dialog box now appears on the S4/S6 Master Module during session or title load, displaying a list of items to include. The dialog mirrors the system options, reflecting the most recently selected settings whether set through the dialog itself or in system preferences.

Key Features include:

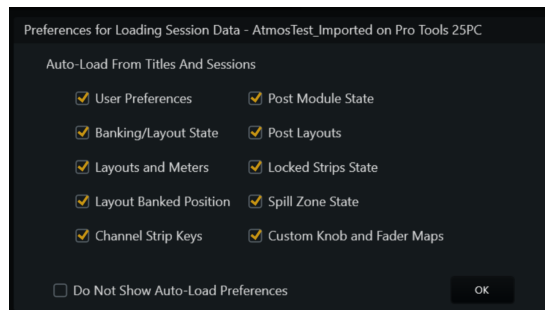
- **Persistent Checkbox States** — The **checked/unchecked** state remains the same as the last selected option, even after restarting the system or reloading sessions.
- **Title and Session Names** — The dialog title displays the loaded title file or session name (if available). If no session name is detected, the app name will be displayed instead.
- **Accept Selection and Continue Loading** — Tapping **OK** confirms the current settings and proceeds with data loading. The dialog can only be closed by tapping **OK** to prevent accidental actions from an unintended tap outside the dialog window.

 **There is no Cancel button.**

- **Auto-Load Visibility Control** — The option, **Do Not Show Auto-Load Preferences**, has been added to improve workflow efficiency and provide more control over preference visibility. This option allows the preference dialog to be hidden for future sessions, reducing unnecessary interruptions.

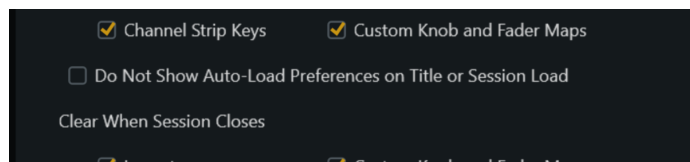
The option is available in two locations:

- **Auto-Load Section:** You can disable the **Auto-Load Preferences** dialog when starting a new session.




The **Do Not Show Auto-Load Preferences** option in the Auto-Load From Titles And Sessions section

- **Do Not Show Auto-Load Preferences on Title or Session Load:** The same option is present here to ensure preferences can be managed at session closure.



The **Do Not Show Auto-Load Preferences** option in the system preferences.

 *These updates streamline the experience and prevent repetitive dialogs from appearing, allowing smoother transitions between sessions.*

- **Show/Hide Preference** — In addition to the auto-load control, enable the **Do Not Show Again** option to permanently dismiss the dialog. If needed, the dialog can be re-enabled through the system preferences with a **Show Again** option, ensuring the flexibility to adjust preferences as needed.

 *Future updates will provide more granular control over these settings, allowing for even more customization and flexibility.*

3 EUCON 2025.3 Release Notes

For EuControl Software and Avid S1, S3, Dock, Control app, and Artist Series Control Surfaces

This document describes the fixed and known issues in EUCON 2025.3 for Avid S1, S3, S4, S6, Dock, Avid Control app, and Artist Series control surfaces.

What is Fixed in EuControl 2025.3

- **GWSW-17692:** It was possible for the **Repeat** function in the Soft Key Command editor to fail, causing assigned soft keys not to repeat as configured, regardless of the specified repeat settings.
- **GWSW-17413:** The **Function Recall Mode** preference was removed from Avid Control to prevent conflicts with EuControl.
- **GWSW-17406:** It was possible for a custom knob map to start with two blank pages instead of one when entering custom map mode on a tablet.
- **GWSW-17347:** It was possible for Cubase panning functions to become unresponsive when using EuControl Surfaces, after switching from Pan to another function and back to Pan.
- **GWSW-17735 & GWSW-17754:** It was possible for Avid Control to display an incorrect track order after reordering tracks in Pro Tools sessions with over 350 tracks, despite the correct order appearing on an attached control surface. In some cases, reordering tracks in large sessions could also cause Avid Control to crash.
- **GWSW-17246:** It was possible for Avid Control to display a stuck pan point when a pan graph existed without a joystick, causing both the small pan graph and large touch panner to show the incorrect point.
- **GWSW-17272:** It was possible for some multipanner knobs to control incorrect functions in Cubase and Nuendo when using Avid Control, such as Rear Divergence adjusting Front/Rear instead.
- **GWSW-16672:** It was possible for multiple Avid Control instances to share the same UID, preventing simultaneous connections of more than one iPad/tablet.
- **GWSW-16279:** The EuControl status bar icon could fail to spin during startup on macOS, remaining stationary instead of spinning to indicate progress.
- **GWSW-15901:** It was possible for custom plug-in parameters to intermittently reset to “N/A” after reopening a session, causing the Avid Control app to forget the assigned custom knob layout.

Avid S4/S6

- **GWSW-17843:** On the MTMApp Workstations page, the memory usage indicator for Mac workstations could display incorrect values, causing the caution indicator to appear prematurely.

- **GWSW-17117:** It was possible for the module version mismatch alert in MTMApp to remain visible when starting a software update, requiring manual dismissal before proceeding.
- **GWSW-16414:** It was possible for Equalizer and Dynamics knobs to disappear when disabling DSP mode in Pro Tools, causing knobs to vanish on attentioned tracks or get stuck in expanded mode until the strip's expand key was toggled or another strip function was selected.
- **GWSW-17191:** It was possible for WSControl to crash when adding tracks in Logic with the **Load All Knobs** setting turned off. When the setting was enabled, Logic would crash instead of WSControl.

What Was Fixed in Previous Versions of EuControl

What was Fixed in EUCON 2024.10

- **GWSW-16968:** Artist Mix: Transport Prev / Next keys could fail to locate correctly.
- **GWSW-16924:** Connecting to Avid Control could be subject to network timeout.
- **GWSW-16739:** It was possible for EuControl to get into an inoperable state after toggling communication on and off.
- **GWSW-14817:** On macOS Catalina and later, it was possible for the Euphonix MIDI driver to fail to be shown in Audio MIDI Setup.
- **GWSW-16997:** Markers could remain visible after closing a session.
- **GWSW-17214:** It was possible for EQ and Dyn graphs to fail to display correctly for Routing Folder tracks with inserts.
- **GWSW-17192:** XMON: It was possible for Avid Control to default to controlling Listen 2 instead of Listen 1 at startup.
- **GWSW-17169:** After copying and pasting a marker, recalling the new marker could sometimes incorrectly locate to the original marker.
- **GWSW-17131:** In the Universe view, the “visible tracks” rectangle could draw incorrectly.
- **GWSW-17122:** Selecting a mono audio track after a VCA was selected could result in the mono track showing a stereo pan graph.
- **GWSW-17069:** Avid Control Markers could become unreliable after sorting the Pro Tools Memory Locations window.
- **GWSW-17023:** It was possible for the Assign button to fail to display in the Tracks tab after focusing an application such as XMON or Sphere and then re-focusing Pro Tools or another EUCON application.
- **GWSW-17022:** The Recall/Store window could fail to close if a different View tab was selected.

- **GWSW-16990:** It was possible for Track number “0” to be displayed after toggling Show Hidden Tracks in: Banking mode.
- **GWSW-16979:** It was possible for Avid Control to crash when a session contained approximately 1500 (or more) markers.
- **GWSW-16969:** Some center-anchored sliders (such as knee, or Q) could be difficult to adjust.
- **GWSW-16836:** Track position and selection could behave unexpectedly when making a selection within a track that was not currently banked to an attached control surface including Avid Control.
- **GWSW-16637:** Mackie Control: Meters could fail to display from applications using the MackieControl protocol.
- **GWSW-17398:** It was possible for functions with a large number of knobs/parameters, such as some Instrument plugins, or Quick Controls, to fail to recall correctly.
- **GWSW-17318:** When controlling two workstations running identical versions of Pro Tools, it was possible for Soft Keys and/or layouts to become inoperable after switching between the two workstations.
- **GWSW-17145:** It was possible for Automation LEDs on hardware control surfaces to fail to clear after a session was closed.
- **GWSW-16637:** Artist Series: On Windows workstations, attempting to tab through open applications using Application + Bank + < could become unresponsive.
- **GWSW-17006 & 16679:** It was possible for Wheel modes to become unresponsive after quitting a secondary EUCON application if that application was not listed in the Applications list, or after initial startup.
- **GWSW-16996:** It was possible for one or more appset folders (such as /Library/Application Support/Euphonix/UserSets/MC2User/MC_USER_SET__Root/Backup) to have permissions altered in such a way as to prevent access until Permissions were changed.
- **GWSW-16981:** EuControl > Soft Keys would not remember its last page view initial startup, logging out/logging in, or restarting EUCON applications.

Avid S1

- **GWSW-17128:** It was possible for one or more S1 strip displays to fail to display functions correctly after nudging or banking.
- **GWSW-17002:** It was possible for some actions (such as changing Rec/Auto switch settings after changing S1 Track Colors scheme) to cause the S1 Track Color Switches to not light.
- **GWSW-17000:** The S1 Track Color switches could remain lit after quitting Pro Tools.

Avid Dock

- **GWSW-17024:** It was possible for the Bank LEDs to not light in all situations where banking was possible.
- **GWSW-17011:** It was possible for the fader to increment by as much as 0.4 dB when merely touching the fader cap.
- **GWSW-16341:** Application cycling using the wheel with App held down was difficult to control.

Known Issues

Avid Control

- **GWSW-17148:** Knobsets 9-16 Not Displaying Correctly in App's Top-Level Knob Set

Function tiles for knobsets 9–16 may not show the correct knobset names, or the tiles may be missing entirely. For example, in Cubase/Nuendo, Quick Controls (knobset 11) cannot be accessed, and the name **Channel** (knobset 9) does not appear. In some cases, the tile for **Instrument** may display, even if the connected app does not support an Instrument knobset.

If this happens, do any of the following:

- If you're using Pro Tools, pressing the HEAT switch may give access to the 9th knobset.
- Try cycling through the knobsets manually to locate hidden functions.
- If you are unsure which knobsets are available, try engaging knobsets 9–16 to see if they respond.
- Restart EuControl and the DAW to refresh the knobset display.
- Double-check your DAW compatibility and ensure you're using the latest software version.



Future updates may address this behavior by either automatically detecting available knobsets or displaying function tiles for non-blank labels in the top-level knobset.

Avid S1

- **GWSW-17002:**S1 Track Color Switches not lit

In rare cases the S1 Track Color switches can fail to light. This can happen if you change the **REC / Auto Switch** setting in **EuControl Settings > General** after changing the **S1 Track Colors** scheme, or if you restart EuControl while your DAW is running.

If this happens, do any of the following:

- Make sure the S1 Track Colors scheme is set to what you want, restart EuControl, and then restart your DAW. Or, if you have EuControl set to Auto-Launch, you can either a) log out and back in again or b) restart your workstation.
- Disable and re-Enable EUCON in Pro Tools.
- If the S1 Track Color scheme is set to **Track Colors** or **Track Colors and Spill**, press the S1 Bank or Nudge switches.

Updating Firmware on EuControl Surfaces

To update firmware:

1. After updating EuControl software, click (Mac) or double-click (Windows) the EuControl icon and select **EuControl Settings**.
2. If necessary, click **Surfaces** to display the Surfaces tab.
3. Click a surface in the **My Surfaces** list so it is highlighted. If multiple surfaces are listed in the My Surfaces list, make sure only one surface is highlighted.

 *Firmware must be updated on each surface separately. Updating firmware on multiple devices at the same time is not supported.*

4. Click **Update Firmware**.
5. Follow the instructions in the **Update Firmware** dialog box to proceed, and make sure to observe the following guidelines:
 - Ensure that all surfaces are connected to a trustworthy power source.
 - Do not power off the surface during the update or attempt to interrupt the update.
 - The status of the firmware update is shown in the EuControl dialog, and on the surface displays.
6. Click **Done** when the firmware update is complete. Repeat this procedure for each surface in your system.

Enabling EUCON in Pro Tools

When you first connect an Avid control surface, you must enable EUCON in Pro Tools. EUCON subsequently remains enabled in Pro Tools unless you disable it.

 *To learn how to configure EuControl for other EUCON-compatible applications see the [EUCON Application Setup Guide.pdf](#) or the documentation provided by the application's manufacturer.*

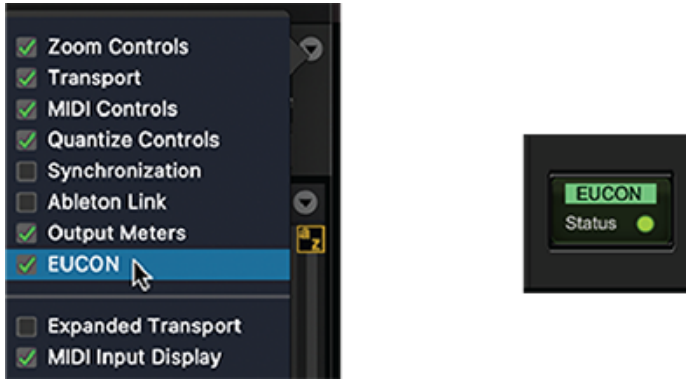
The ways you can enable EUCON depend on which version of Pro Tools and operating system you are using.

- **Mac** only: When running Pro Tools 2022.12 or later natively on Apple Silicon Macs, the previously available **Ethernet Controllers** tab in Pro Tools **Setup > Peripherals** is no longer provided (see "[EUCON in the Toolbar](#)" below).
- On **Windows**, or when running under Rosetta on Apple Silicon Macs, the Ethernet Controllers tab remains available to enable EUCON (in addition to the Edit window Toolbar controls for EUCON introduced in Pro Tools 2022.12). See "[EUCON in Setup > Peripherals](#)" on the next page

EUCON in the Toolbar

To show EUCON controls in the Edit window:

1. Click the Edit Window Toolbar menu (in the upper-right corner of the window). Or Right-click in the Toolbar.
2. From the menu, select **EUCON**. EUCON controls are shown in the Tool bar.



Selecting EUCON in the Edit window Tool bar menu (shown at left) and EUCON in the Edit window Toolbar (shown at right)

To turn EUCON on or off:

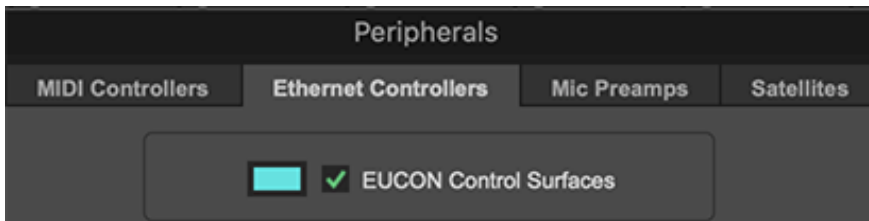
- ▶ Click the **EUCON** button. EUCON is enabled when the background is lit green with black text.

The Status LED indicates EUCON communication status. You can also hover over the LED to view a tooltip, if enabled in Pro Tools Preferences.

EUCON in Setup > Peripherals

To enable EuControl in Pro Tools:

1. Launch Pro Tools. If the Dashboard dialog appears, close it.
2. Choose **Setup > Peripherals**, click the **Ethernet Controllers** tab, then select **Enable EUCON**.



Enable EUCON check box

3. Click **OK**. You do not need to configure any other Ethernet Controllers settings (they do not apply to EUCON).

Pro Tools scans your system until it identifies attached EUCON-compatible hardware. When Pro Tools finishes scanning your system, your controllers are ready to use with Pro Tools.

⚡ While Pro Tools is connected to a EUCON surface do not uncheck to disable and re-check to enable without a complete restart of all components (surfaces and Pro Tools computer) after disabling and before re-enabling. Before ever deselecting Enable EUCON be sure to first go to EuControl Settings > Surfaces and remove all attached surfaces.

4. Proceed to [Confirming EUCON](#).

Confirming EUCON

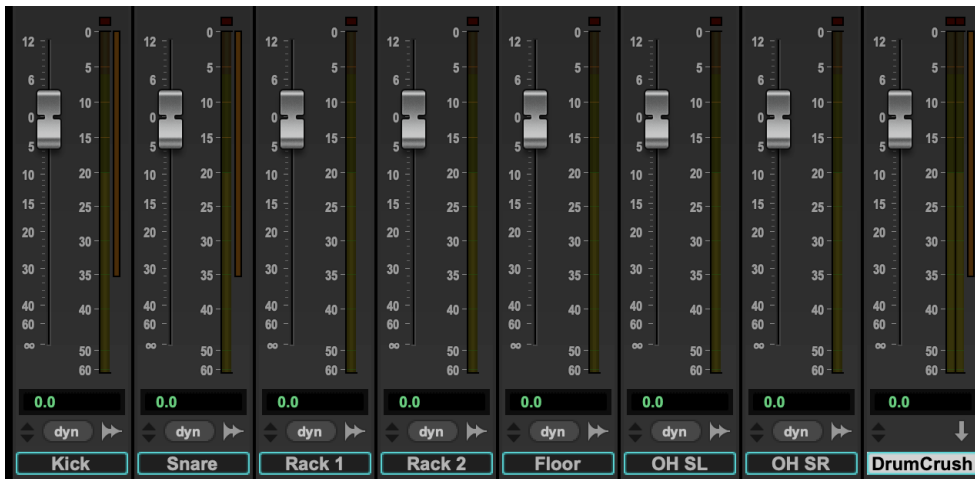
To confirm installation and communication:

1. Make sure you have enabled EUCON.
2. Open a session if one is not already open.
3. Verify that the Tracks or Mixer view in the Control app shows the track names from the Pro Tools session.



Avid Control Tracks view showing the first 16 tracks in a session

4. In the Pro Tools Mix window, verify that the names of the tracks currently banked to fader strips on your control surface are highlighted with blue-green borders.



Pro Tools Mix window showing tracks currently banked to S1

Legal Notices

© 2025 Avid Technology, Inc., ("Avid"), all rights reserved. This guide may not be duplicated in whole or in part without the written consent of Avid.

Please review our End User License Agreement: <https://www.avid.com/legal/end-user-license-terms-for-avid-software>

For a current and complete list of Avid trademarks visit: <https://www.avid.com/legal/trademarks-and-other-notice>

Bonjour, the Bonjour logo, and the Bonjour symbol are trademarks of Apple Computer, Inc.



Confidential unpublished works. Copyright 2020 Dolby Laboratories. All rights reserved.

Dolby, Dolby Atmos, and the double-D symbol are registered trademarks of Dolby Laboratories Licensing Corporation.

Thunderbolt and the Thunderbolt logo are trademarks of Intel Corporation in the U.S. and/or other countries.

This product may be protected by one or more U.S. and non-U.S. patents. Details are available at <https://www.avid.com/legal/patent-marking>.

Product features, specifications, system requirements, and availability are subject to change without notice.