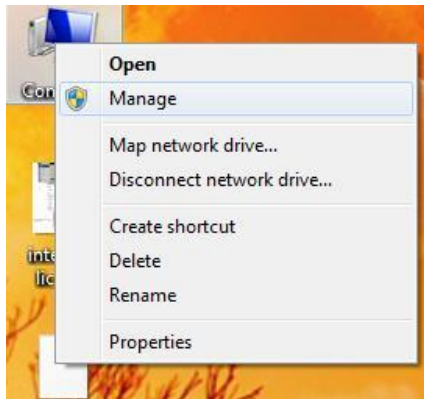


Right click on My computer on the desktop or from the windows start menu .

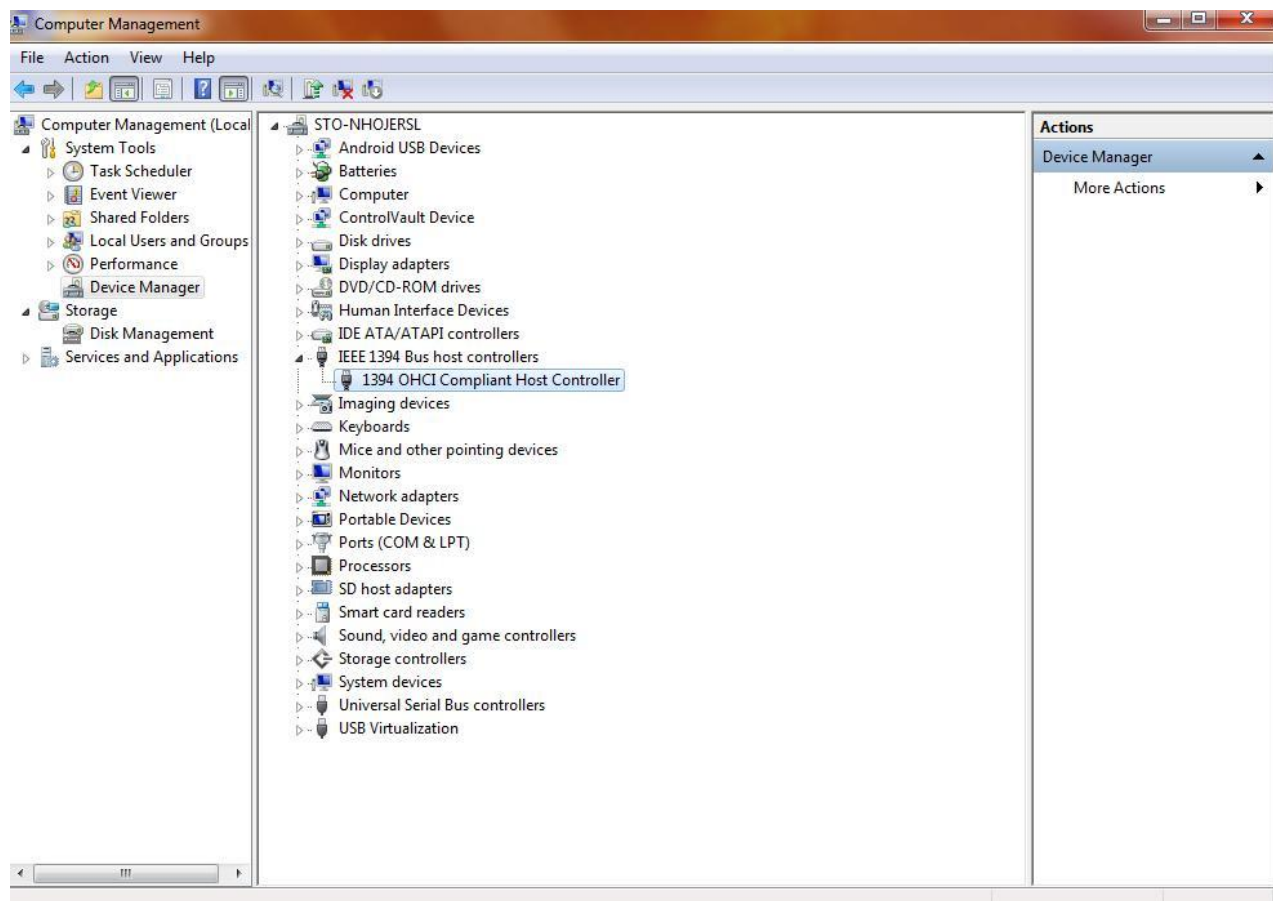
Choose “manage”



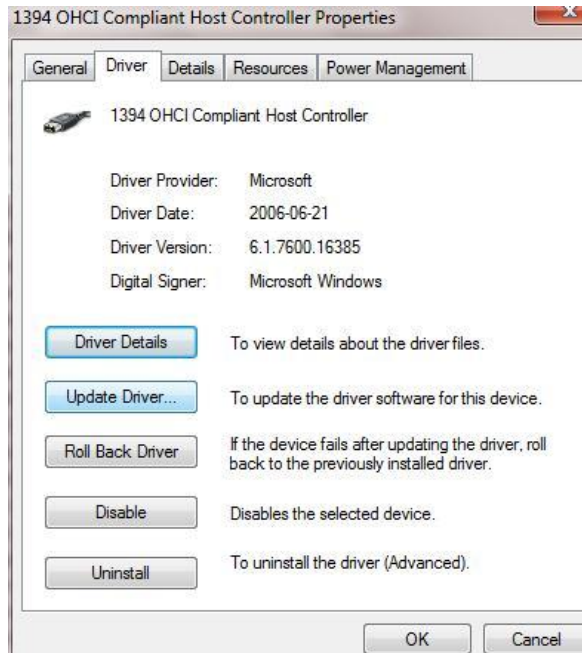
In the left hand window find Device Manager and select it

Find the firewire ports (IEEE 1394) controllers and press the arrow to expand it.

Right click on the firewire card and choose “properties”

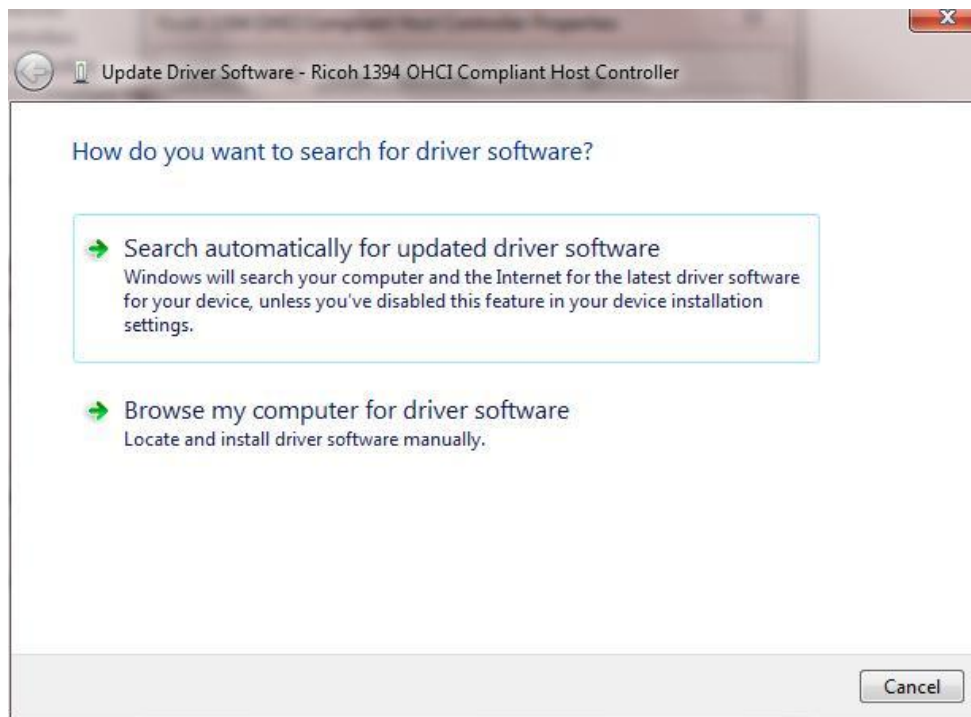


Go to the second tab called “driver” and choose the “update driver” button

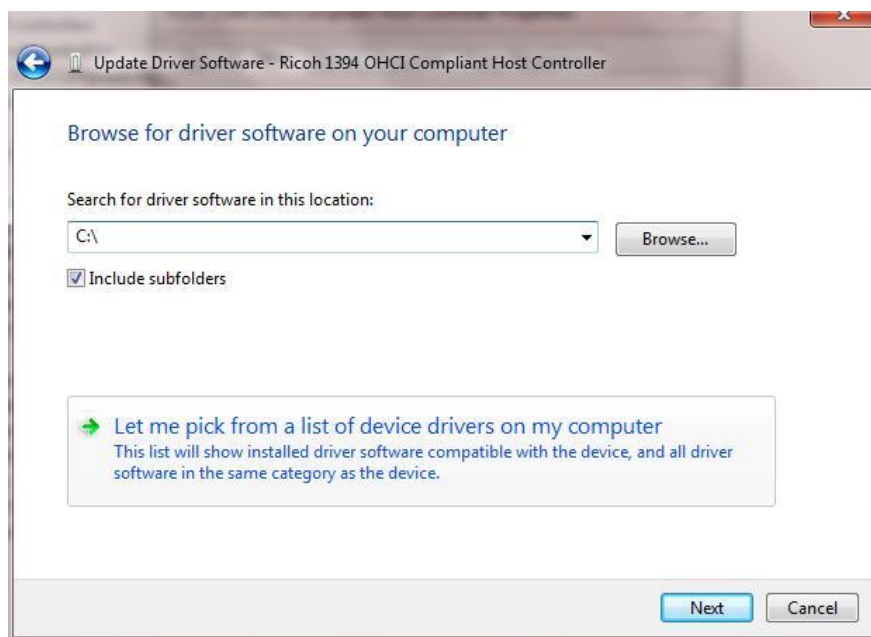


Important: Make a note of the driver name and version currently in use. If this fix doesn't help the problem please revert back to the previous driver

Choose the “Browse my computer for driver software”

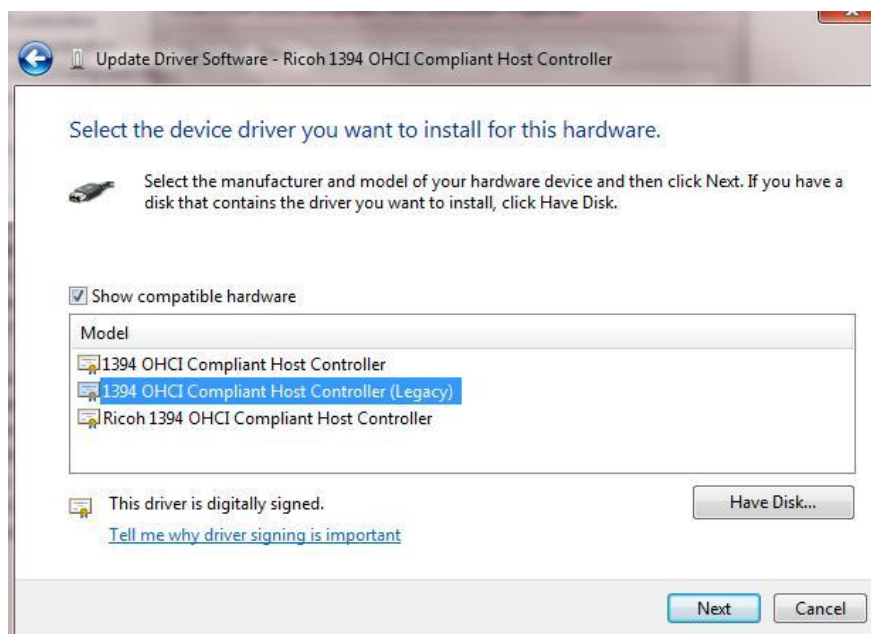


Choose “Let me pick from a list of device drivers on my computer”



Select the 1394 OHCI Compliant Host Controller (Legacy) driver

Click the next button



When the installation has finished, press the close button

Restart windows if needed