



# Avid® Editing Application

## ReadMe for Media Composer® v8.8

---

### Revision History

Date	Description
June 1, 2017	Updated <a href="#">Qualified Workstations and Laptops</a> .
February 24, 2017	Added MCDEV-6862 and COGS-2560 to <a href="#">Limitations</a> .

**IMPORTANT:** Avid periodically makes software updates available for download on [Avid.com](http://www.avid.com/us/support/downloads) at the following location:[www.avid.com/us/support/downloads](http://www.avid.com/us/support/downloads). Please check the above site regularly for information on available downloads for your product.

### Important Information

Avid® recommends that you read all the information in this ReadMe file thoroughly before installing or using any new software release.

**Important:** Search the Avid Knowledge Base for the most up-to-date ReadMe file, which contains the latest information that might have become available after the documentation was published.

This document describes compatibility issues with previous releases, software installation instructions, hardware and software requirements, and summary information on system and memory requirements. This document also lists hardware and software limitations.

# Contents

If You Need Help. . . . . 3

Fixed in Media Composer v8.8 . . . . . 4

New in Media Composer v8.8 . . . . . 4

Limitations. . . . . 5

Notes on Windows. . . . . 9

Notes on Software Licensing. . . . . 8

Qualified Hardware and Operating Systems . . . . . 8

Compatibility Chart . . . . . 20




Setting up the NVIDIA Card . . . . . 26

Shared Storage Support . . . . . 27

Feature Performance . . . . . 17

# Symbols and Conventions

Avid documentation uses the following symbols and conventions:

Symbol or Convention	Meaning or Action
	A note provides important related information, reminders, recommendations, and strong suggestions.
	A caution means that a specific action you take could cause harm to your computer or cause you to lose data.
	A warning describes an action that could cause you physical harm. Follow the guidelines in this document or on the unit itself when handling electrical equipment.
>	This symbol indicates menu commands (and subcommands) in the order you select them. For example, File > Import means to open the File menu and then select the Import command.

Symbol or Convention	Meaning or Action
▶	This symbol indicates a single-step procedure. Multiple arrows in a list indicate that you perform one of the actions listed.
(Windows), (Windows only), (Macintosh), or (Macintosh only)	This text indicates that the information applies only to the specified operating system, either Windows or Macintosh OS X.
<b>Bold font</b>	Bold font is primarily used in task instructions to identify user interface items and keyboard sequences.
<i>Italic font</i>	Italic font is used to emphasize certain words and to indicate variables.
<b>Courier Bold font</b>	Courier Bold font identifies text that you type.
Ctrl+key or mouse action	Press and hold the first key while you press the last key or perform the mouse action. For example, Command+Option+C or Ctrl+drag.

## If You Need Help

If you are having trouble using your Avid product:

1. Retry the action, carefully following the instructions given for that task in this guide. It is especially important to check each step of your workflow.
2. Check this ReadMe file for the latest information that might have become available after the documentation was published. Also check online for the most up-to-date ReadMe because the online version is updated whenever new information becomes available. To view the online ReadMe, select ReadMe from the Help menu, or visit the Knowledge Base at <http://www.avid.com/readme>.
3. Check the documentation that came with your Avid application or your hardware for maintenance or hardware-related issues. In addition to the printed documentation supplied with your editing application, the documentation is supplied in PDF format when you install the application. Topics that you print from the Help have limited page layout and formatting features. If you want to print a higher quality version of Help information, Avid recommends that you print all or part of the PDF version of the appropriate Avid manual included in the Online Library for your editing application. To access the Online Library, select Help > Online Library from within your Avid editing application.
4. Visit Avid Online Support at [www.avid.com/onlineSupport/](http://www.avid.com/onlineSupport/). Online support is available 24 hours per day, 7 days per week. Search the Knowledge Base to find answers, to view error messages, to access troubleshooting tips, to download updates, and to read or join online message-board discussions.

## New in Media Composer v8.8

New Features: For information on new features, see the [What's New v8.8](#).

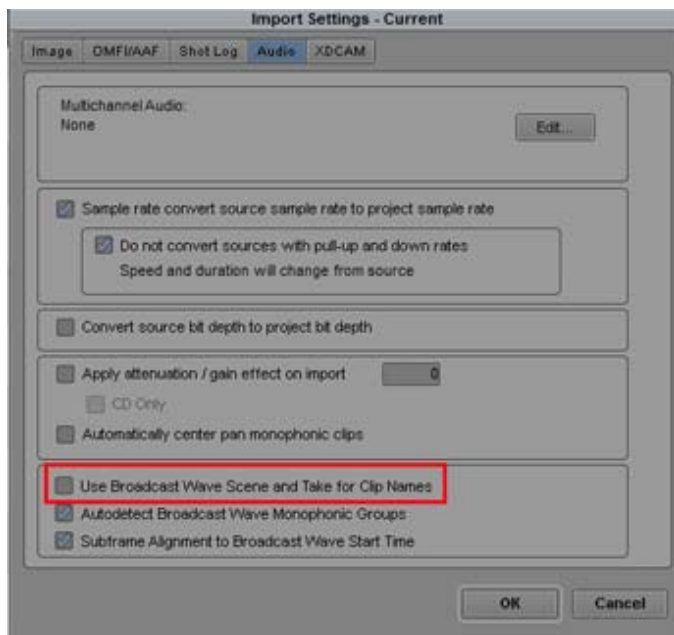
New Nvidia Driver: Nvidia Driver v375.86 is supported with this release.

## Fixed in Media Composer v8.8

The following have been fixed:

- **Bug Number:** MCCET-1541. You could not open a project if the project was named Clip.
- **Bug Number:** MCCET-1602. In some instances you could not successfully drag and drop audio clips above or below the TC track.
- **Bug Number:** MCCET-1638. Custom Colors did not stay in the Color Palette when using Clip Color.
- **Bug Number:** MCCET-1388. Disabling the “Auto-create new tracks” setting was ignored when using Edit While Capture clips.
- **Bug Number:** MCCET-1572. (List Tool) The Cutlist EndHdl timecode was short one frame.
- **Bug Number:** MCCET-1568. (List Tool) The marker values were empty in an Optical List.
- **Bug Number:** MCCET-1567. (List Tool) Markers did not display on Optical in an Assemble List.
- **Bug Number:** MCCET-1636. When performing an Export to Device with an XDCAM device attached, you might have received a “Please connect XDCAM device or insert disk” message.
- **Bug Number:** MCCET-1627. In some instances, exporting a graphic from linked XAVC Long GOP media failed with an assertion error.
- **Bug Number:** MCCET-1671. In some instances, rendering a sequence with muted clips resulted in clips being partially rendered.
- **Bug Number:** MCCET-1679. The Project Window summary might have been empty on a Mac system, or contained garbled text on a Windows system.

- **Bug Number:** MCCET-495. When importing some .wav files, the name of the files include a “/” which is an illegal character that is not supported in Interplay. This is because Media Composer uses the values of “Scene/Take” for the file name when importing Broadcast Wave files. An additional Import Setting has been added to the Import Settings dialog. The “Use Broadcast Wave Scene and Take for Clip Names” is defaulted on. If you are importing Broadcast Wave files and you **do not** want them named using Scene/Take, you must deselect this option in the Import Settings:Audio dialog box.



## Limitations

- **Bug Number:** MCDEV-6862. Occasionally, when working with media with effects or media where space, time or color adapters were rendered during transcode or video mixdown, you might see artifacts during playback or export.

**Workaround:** Go to the Render Settings dialog and choose Disable GPU effects.

- **Bug Number:** COGS-2560. While working in the Script Window, text operations (cut/copy/paste/delete/editing) can only be done in edit mode. See What's New v8.8 for information on edit mode in the Script Window.

- **Bug Number:** MCDEV-5379. When in the Source Browser, linking to an XAVC Long GOP volume does not work properly.  
**Workaround:** You can link to individual XAVC Long GOP files at the following location:  
Volume Name\PRIVATE\XDROOT\Clip
- **Bug Number:** MCDEV-5650. When working with Panasonic LongG media, you might receive an “SFPlayConsumer Timeout” error if audio waveforms are enabled.  
**Workaround:** Turn off audio waveforms.
- **Bug Number:** MCDEV-5891. Media Composer v8.6 on Mac OS does not support send to playback (STP) of AVC-LongG media.  
**Workaround:** Scrub back to the available media.
- **Bug Number:** MCDEV-5385. Multicam editing with Panasonic LongG media is not supported with this release.
- **Bug Number:** MCDEV-5384. Currently, when working with LongG media, you might see dropped frames when editing 4 streams. This might occur when playing from a single stream to multiple streams (and from multiple streams back to a single stream). The dropped frames usually display around the edit point (transition to a different stream).

## Before Installing the Editing Application

### Before Installing the Editing Application in an Avid Interplay Environment



**Please note the following before you install the editing application in an Avid Interplay environment.**

Media Composer v8.7 and higher requires Avid Interplay client v3.7 and higher.

### Upgrading to Mac OS v10.11.x

(Mac) If you upgrade to Mac OS 10.11.x, you must uninstall Media Composer. Reinstall Media Composer after you perform the OS upgrade. If you use Avid Artist DNxIO, you must also uninstall the Desktop Video software and reinstall it after the OS upgrade.

### Installation Information

Read through the *Installation Guide for Avid Editing Applications*. This document is available on the Knowledge Base.

If you are upgrading from v7.x to v8.x, you must uninstall the Avid Transcode Service and the Avid Editing application. Beginning with version 8.0 of the editing application, the Transcode Service is included as part of the editing application and is no longer a separate program. When you uninstall Media Composer v8.0, a separate uninstall of Transcode service is no longer necessary.

### **Buffer Error Message**

The editing application requires a minimum of 8GB RAM. If you try to install the editing application on a system with less than 8GB RAM, you will receive a buffer error and installation will not proceed.

### **Supported Systems Message**

A new message has been added to this release that detects if you are installing on an unsupported system: “Your system does not support this version of Media Composer | Software. Please consult the Specifications information on Avid.com for supported configurations. Media Composer | Software installation will be aborted.”

Media Composer 8.3 and newer systems require a micro architecture that supports the SSE 4.1 CPU Instruction set. Most systems shipped since 2008 with four or more processor cores, i.e. Quad core, will include this functionality. Systems shipped before 2008 are not likely to support this functionality and Media Composer will fail to install.

If you receive the message, go [here](#) to review system requirements.

### **Sentinel Error Message**

(MCDEV-2394) On a Windows 7 system, if a “Failed to add Sentinel64.cat file.” error appears during the installation, you can safely click OK to continue with the installation. Dongle activation will work properly.

### **Download Note**

To avoid “File Path too long” or a “File cannot be copied” warning while unzipping the downloaded installer, try placing the installer .zip on the root level of your C:\ drive and unzip it from that location.

### **User Right to Raise Thread Priority**

(Windows) Note for Domain Administrators: If your editing systems are part of a domain, you must give the user the right to “Increase Scheduling Priority.” This must be done within the Domain Group Policy on the domain controller by giving the right explicitly to the user or giving the right to a group and adding the user to that group. You will not be able to launch as a regular user if this is not set properly.

If you are part of a domain, a Domain Administrator should install and perform the first launch of the editing application.

### **Install as Administrator**

You need to first install and launch the editing application as an Administrator. If you are in a Shared Storage environment, mount your workspaces as an Administrator. You may then log off and log back in as a Standard user, if necessary.

## **After Installing the Editing Application**

### **AMA Plug-Ins**

You cannot install the AMA Plug-ins while the editing application background services are running. Make sure you Stop the services before installing the AMA Plug-Ins. The stop/start background services icon is on the menu bar (Macintosh) or taskbar (Windows). Once you install the new AMA plug-in, restart the services. See “Starting and Stopping Avid Background Services” in the Help.

## **Notes on Software Licensing**

### **If You Upgrade Your Operating System**

If you need to upgrade your operating system after you install your Avid editing application, first deactivate your software. After you upgrade your operating system and, if required, reinstall your application, you can reactivate your software. For information on activating and deactivating your software license, see the *Installation Guide for Avid Editing Applications*.

## **Minimum RAM Recommendation**

For this release Avid recommends a minimum of 8GB of RAM. Some features might require more RAM and specific hardware. See “[Feature Performance](#)” on page 17 for more info.

## **Qualified Hardware and Operating Systems**

Some features are processor-intensive and require specific hardware. See “[Feature Performance](#)” on page 17 for more info.

The following tables provide the information on qualified Windows and Macintosh hardware.



For 3rd-Party Open IO hardware qualification refer to the manufacturer’s documentation. See the Open IO Frequently Asked Questions document on the Knowledge Base:  
[http://avid.force.com/pkb/articles/en\\_US/faq/en422991](http://avid.force.com/pkb/articles/en_US/faq/en422991)

The following tables also list the qualified Operating Systems. Depending upon your hardware the qualified Operating Systems are:

- Windows v7 64-bit SP1(Professional) and Windows v8.1 (Professional and Enterprise), Windows 10 64-bit (Professional and Enterprise).
- Macintosh v10.10.5, 10.11.6, v10.12.3

## Macintosh OS Permission Information

As of Macintosh OS 10.7 Lion, the default permissions for the root level of the system drive are now set to “Read Only” for all users. This prevents the Avid Editing Application from being able to use this drive as a media drive. You will see the drive grayed out in Media Creation settings or as an option for import, mixdown, render, and consolidate/transcode.

If you don’t intend to use the system drive for media you can leave it alone. This is ideal in most cases.

If you do need to use the system drive, perform the following to change permissions.

### To change permissions:

1. Click on your system drive (Macintosh HD in most cases) to highlight.
2. From the File menu select Get Info (cmd+I)
3. Click the lock icon in the bottom right to make changes
4. Click on the “Read only” text in the Privilege column next to Everyone and set the privilege to “Read & Write”

You should now be able to see the system drive as a valid media drive.



*If you repair permissions on the system drive, they will reset and you will have to repeat this procedure.*

## Qualified Workstations and Laptops

The following tables list the qualified workstations and laptops for Media Composer editing applications.

### Qualified PC Workstations with Avid Media Composer

The following PC Workstations are qualified with Avid Media Composer.

Qualified PC Hardware	Graphics Card	Supported with
HP Z840 Dual [8-16 core 2.3 Ghz or higher] 16/32/64 GB DDR4-2133 memory	NVIDIA K4200 or K5200 M4000, M5000, M600 AMD W7100 or W8100	Software Only Nitris DX Mojo DX Artist DNxIO
HP Z640 Dual [6, 8, or 12 core 2.3 Ghz or higher] 16/32/64 GB DDR4-2133 memory	Nvidia K2200, K4200, K5200, M4000, M5000 AMD W5100, W7100, W8100	Software Only Nitris DX Mojo DX Artist DNxIO
Dell 7910 Dual [6, 8, or 12 core 2.3 Ghz or higher] 16/32/64 GB DDR4-2133 memory	Nvidia K4200, K5200, M4000, M5000, M6000 AMD W7100, W8100	Software Only Nitris DX Mojo DX Artist DNxIO
Dell 7810 Dual [6, 8, or 12 core 2.3 Ghz or higher] 16/32/64 GB DDR4-2133 memory	NVIDIA K4200 or K5200 M4000 or M5000 AMD W7100 or W8100 or W5100	Software Only Nitris DX Mojo DX Artist DNxIO
Lenovo P900 Dual [6, 8, or 12 core 2.3 Ghz or higher] 16/32/64 GB DDR4-2133 memory	NVIDIA K4200 or K5200 M4000, M5000, M6000	Software Only Nitris DX Mojo DX Artist DNxIO
Lenovo P700 Dual [6, 8, or 12 core 2.3 Ghz or higher] 16/32/64 GB DDR4-2133 memory	NVIDIA K4200 or K5200 M4000 or M5000	Software Only Nitris DX Mojo DX Artist DNxIO
HP Z820 Dual 6-core E5-2630V2 2.6 Ghz, 8 core E5-2650V2 2.6 Ghz, or 12 core E5-2695V2 2.4 Ghz 16/32 GB DDR3-1866 memory	K4000	Software Only Nitris DX Mojo DX Artist DNxIO
Dell T7610 Dual 6-core E5-2630V2 2.6 Ghz, 8 core E5-2650V2 2.6 Ghz, or 12 core E5-2695V2 2.4 Ghz 16/32 GB DDR3-1866 memory	K4000	Software Only Nitris DX Mojo DX Artist DNxIO

<b>Qualified PC Hardware</b>	<b>Graphics Card</b>	<b>Supported with</b>
Dell T5610 Dual 6-core E5-2630V2 2.6 Ghz, 8 core E5-2650V2 2.6 Ghz, or 12 core E5-2695V2 2.4 Ghz 16/32 GB DDR3-1866 memory	K4000	Software Only Nitris DX Mojo DX Artist DNxIO
Lenovo D30 Dual 6-core E5-2630V2 2.6, 8 core E5-2650V2 2.6, or 12 core E5-2695V2 2.4 16/32 GB DDR3-1866 memory	K4000	Software Only Nitris DX Mojo DX Artist DNxIO
Lenovo C30 Dual 6-core E5-2630V2 2.6, 8 core E5-2650V2 2.6, or 12 core E5-2695V2 2.4 16/32 GB DDR3-1866 memory	K4000	Software Only Nitris DX Mojo DX Artist DNxIO
HP z820 Dual 8 Core Intel Xeon E5-2665 2.4 GHz, Quad 6-core E5-2640 2.5 GHz	NVIDIA Q4000 or K4000	Software Only Nitris DX Mojo DX Artist DNxIO
Lenovo D30 Dual 6 core E5-2640 2.5Ghz or Dual 8 core E5-2660 2.2 GHz 16 GB DDR3-1600 memory	NVIDIA Q4000 or K4000	Software Only Nitris DX Mojo DX Artist DNxIO
Lenovo C30 Dual 6 core E5-2640 2.5GHz or Dual 8 core E5-2660 2.2 GHz 16 GB DDR3-1600 memory	NVIDIA Q4000 or K4000	Software Only Nitris DX Mojo DX Artist DNxIO
Dell T7600 Dual 8 core Intel E5-2665 2.4 GHz 16 GB DDR3-1600 memory, Dual 6-core E5-2630	NVIDIA Q4000 or K4000	Software Only Nitris DX Mojo DX Artist DNxIO
Dell T5600 Dual 6-core Intel E5-2630 2.2 GHz 16 GB DDR3-1600 memory, Dual 8-core 2665	NVIDIA Q4000 or K4000	Software Only Nitris DX Mojo DX Artist DNxIO
Lenovo ThinkStation E31, Intel Xeon E3-1245V2 3.40 GHz 8 GB DDR3-1600 RAM	NVIDIA Q600 or K600 HD4000	Software Only
HP Z440 6 or 8 core 3.0 Ghz or higher] 16/32 GB DDR4-2133 memory	NVIDIA K2200 AMD W5100	Software Only Nitris DX Mojo DX Artist DNxIO

<b>Qualified PC Hardware</b>	<b>Graphics Card</b>	<b>Supported with</b>
Dell 5810 6 or 8 core 3.0 Ghz or higher] 16/32 GB DDR4-2133 memory	NVIDIA K2200 AMD W5100	Software Only Nitris DX Mojo DX Artist DNxIO
Lenovo P500 6 or 8 core 3.0 Ghz or higher] 16/32 GB DDR4-2133 memory	NVIDIA K2200	Software Only Nitris DX Mojo DX Artist DNxIO
HP Z420 6-core E5-1650 V2 3.5 Ghz 8/16 GB DDR3-1866 memory	NVIDIA K2000	Software Only Nitris DX Mojo DX Artist DNxIO
Dell T3610 6-core E5-1650 V2 3.5 Ghz 8/16 GB DDR3-1866 memory	NVIDIA K2000	Software Only Nitris DX Mojo DX Artist DNxIO
Lenovo S30 6-core E5-1650V2 3.5 Ghz 8/16 GB DDR3-1866 memory	NVIDIA K2000	Software Only Nitris DX Mojo DX Artist DNxIO
HP z420 6-core Intel E5-1650 3.2 GHz 8 GB DDR3-1600 memory	NVIDIA Q2000 or K2000	Software Only Nitris DX Mojo DX Artist DNxIO
Lenovo S30 6-core Intel E5-1650 3.2 GHz 8 GB DDR3-1600 memory	NVIDIA Q2000 or K2000	Software Only Nitris DX Mojo DX Artist DNxIO
Dell T3600 6-core Intel E5-1650 3.2 GHz 8 GB DDR3-1600 memory	NVIDIA Q2000 or K2000	Software Only Nitris DX Mojo DX Artist DNxIO
HP Z230 quad Xeon E3-1245V3 3.4 Ghz 8/16 GB DDR3-1600 memory Tower or SFF	K600 HD4600	Software Only
HP Z240 quad Xeon E3-1245V5 3.5 Ghz 8/16/32 GB DDR4-2133 memory Tower or SFF	K620, K1200 (SFF), K2200 (Tower), HD530	Software Only

<b>Qualified PC Hardware</b>	<b>Graphics Card</b>	<b>Supported with</b>
Lenovo P310 quad Xeon E3-1245V5 3.5 Ghz 8/16/32 GB DDR4-2133 memory Tower or SFF	K620, K1200 (SFF), K2200 (Tower), HD530	Software Only
Dell 3620 quad Xeon E3-1245V5 3.5 Ghz 8/16/32 GB DDR4-2133 memory Tower	K620, K2200, HD530	Software Only
Dell 3420 quad Xeon E3-1245V5 3.5 Ghz 8/16/32 GB DDR4-2133 memory SFF	K620, K1200 HD530	Software Only
Lenovo P300 quad Xeon E3-1246V3 3.5 Ghz 8/16/32 GB DDR3-1600 memory Tower or SFF	K600 or K620, HD4600	Software Only
Lenovo E32 quad Xeon E3-1245V3 3.4 Ghz 8/16 GB DDR3-1600 memory Tower or SFF	K600, HD4600	Software Only
Dell T1700 quad Xeon E3-1245V3 3.4 Ghz 8/16 GB DDR3-1600 memory Tower or SFF	K600 HD4600	Software Only
HP Z1 G2 All-in-one E3-1245V3 3.4 Ghz 8/16 GB DDR3-1600 memory Thunderbolt	K2100M Intel HD4600	Mojo DX Software Only
Lenovo ThinkCentre Edge 93Z i7-4770S 3.1 Ghz 8/16 GB DDR3-1600 memory quad core All-in-One	Intel HD4600	Software Only
HP Z220 Quad Xeon E3-1245V2 3.4 GHz 8 GB DDR3-1600 memory (Tower or SFF)	Q600 or K600 HD4000	Software Only
HP Z1 Quad Xeon E3-1245V2 3.4 GHz 8 GB DDR3-1600 memory All-in-One	NVIDIA K1000M or HD4000	Software Only
Lenovo ThinkCentre Edge 92Z i7-3770S 3.1 Ghz 8 GB DDR3-1600 memory Quad core All-in-One	Intel HD4000	Software Only

## Qualified PC Notebooks for Avid Media Composer

The following PC Notebooks are qualified with Avid Media Composer. The following applies to the editing system when running on a laptop:

- DNxHD capture is only supported on Mojo DX on a Quad core system with hyperthreading enabled. Nitris DX is not supported on laptops.
- Capture of 10 bit video for example, DNxHD 185x, is not supported on Mojo DX.
- Playback in full quality 10 bit mode is not supported

Qualified PC Notebooks	Graphics Cards	Supported With
Dell 7710 17" 2.7 Ghz quad core i7 or 2.9 Ghz Xeon E3 1920x1080 or 3840x2160 - 8/16/32 GB 2133Mhz DDR4L Memory	M3000M, M4000M, M5000M AMD W7170M	
Dell 7510 15" 2.5 Ghz and higher quad core i7 1920x1080 or 3200x1800 - 8/16/32 GB 2133Mhz DDR4L Memory	M1000M, M2000M AMD W5170M	Software Only
Dell 5510 15" 2.3 Ghz and higher quad core i7 1920x1080 or 3840x2160 - 8/16 GB 2133Mhz DDR4L Memory USB-C	Nvidia M1000M	Software Only
Dell 3510 15" 2.3 Ghz and higher quad core i7 1920x1080 - 8/16 GB 2133Mhz DDR4L Memory	AMD W5130M	Software Only
HP Zbook 14" 2.1 Ghz dual core i7-4600U 1920x1080 - 8/16 GB 1600Mhz DDR3 Memory Ultrabook	Intel HD4400 FirePro M4100	Software Only
HP Zbook 15" G2 - 2.5 Ghz and higher quad core i7 1920x1080 - 8/16/32 GB 1600Mhz DDR3 Memory thunderbolt	K1100M K2100M	Software Only Mojo DX Artist DNxIO
HP Zbook 15" 2.4 Ghz and higher quad core i7 1920x1080 - 8/16 GB 1600Mhz DDR3 Memory thunderbolt	K1100M K2100M	Software Only Mojo DX
HP Zbook 17" G2 - 2.5 Ghz and higher quad core i7 1920x1080 - 8/16/32 GB 1600Mhz DDR3 Memory thunderbolt	K3100M K4100M K2200M	Software Only Mojo DX Artist DNxIO

Qualified PC Notebooks	Graphics Cards	Supported With
HP Zbook 17" 2.4 Ghz and higher quad core i7 1920x1080 - 8/16 GB 1600Mhz DDR3 Memory thunderbolt	K3100M K4100M	Software Only Mojo DX
Dell M3800 15" 2.2 Ghz and higher quad core i7 1920x1080 or 3200x1800 - 8/16/32 GB 1600Mhz DDR3 Memory Ultrabook	K1100M K2100M	Software Only Mojo DX
Dell M4800 15" 2.4 Ghz and higher quad core i7 1920x1080 or 3200x1800 - 8/16/32 GB 1600Mhz DDR3 Memory	K1100M K2100M	Software Only Mojo DX
Dell M6800 17" 2.4 Ghz and higher quad core i7 1920x1080 - 8/16/32 GB 1600Mhz DDR3 Memory	K3100M K4100M	Software Only Mojo DX
Lenovo W541 15" 2.5 Ghz and higher quad core i7 15" 1920x1080 2880x1620 - 8/16/32 GB 1600Mhz DDR3 Memory Thunderbolt	K1100M K2100M	Software Only Mojo DX Artist DNxIO
Lenovo W540 15" 2.4 Ghz and higher quad core i7 15" 1920x1080 2880x1620 - 8/16 GB 1600Mhz DDR3 Memory Thunderbolt	K1100M K2100M	Software Only Mojo DX
Lenovo ThinkPad W530 "Intel Core i7-3720QM 2.6 GHz, i7-3820QM 2.7GHz, i7-3920XM 2.9GHz	NVIDIA Quadro K1000M or K2000M	Software Only Mojo DX
HP 8770w i7-3720QM 2.6 GHz, I7-3820QM 2.7GHz, I7-3920XM 2.9GHz 17" 1920x1080 - 8 GB 1600MHz DDR3 Memory	NVIDIA Quadro K3000M or K4000M	Software Only Mojo DX
HP 8570w I7-3720QM 2.6GHz, i7-3820QM 2.7 GHz 15" 1920x1080 - 8 GB 1600Mhz DDR3 Memory	NVIDIA Quadro K1000M or K2000M	Software Only Mojo DX
Dell M6700 i7-3740QM 2.7 GHz 17" 1920x1080 - 8 GB 1600Mhz DDR3 Memory	NVIDIA Quadro K3000M or K4000M	Software Only Mojo DX
Dell M4700 i7-3740QM 2.7 GHz, 15" 1920x1080 - 8 GB 1600Mhz DDR3 Memory	NVIDIA Quadro K1000M or K2000M	Software Only Mojo DX

### Qualified Macintosh Workstations for Avid Media Composer

The following Macintosh Workstations are qualified with the Avid Media Composer.

Qualified Macintosh Hardware	Graphics Cards	Supported With
Mac Pro 6 core 3.5 Ghz, 8 core 3.0 Ghz, 12 core 2.7 (Late 2013) 16/32 GB 1866Mhz DDR3 Memory Thunderbolt - no PCI-e slots	AMD FirePro D500	Software Only Mojo DX Nitris DX (no HD capture) Artist DNxIO
Mac Pro “Westmere” Two 2.66GHz 6-Core Intel Xeon (12 cores)	ATI Radeon HD 5770	Software Only Nitris DX Mojo DX Artist DNxIO
iMac Retina 5K 27" 4.0 Ghz i7 Quad core Late 2015 - 8/16/32 GB 1600Mhz DDR3	Radeon M390, M395, M395X	Software Only Mojo DX Artist DNxIO
iMac Retina 5K 27" 4.0 Ghz i7 Quad core Late 2014 - 8/16/32 GB 1600Mhz DDR3	Radeon M290X, M295X	Software Only Mojo DX Artist DNxIO
iMac 27" 2.9GHz Quad-core Intel i5, 3.2Ghz Quad-core Intel i5, 3.4 GHz Quad Core Intel i7 (Late 2012)	NVIDIA GeForce GTX 660M or NVIDIA GeForce GTX 675MX	Software Only Mojo DX
iMac 21.5" 2.9GHz Quad-core Intel i5, 3.1GHz Quad-core Intel i7 (Late 2012)	NVIDIA GeForce 650M	Software Only Mojo DX
Mac mini 2.3/2.6GHz quad core Intel i7	Intel HD 4000	Software Only Mojo DX
Mac Mini Server 2.0 GHz i7 Quad core Thunderbolt - 4GB 1333MHz DDR3	Intel 3000	Software Only Mojo DX

### Qualified Macintosh Notebooks for Media Composer

The following Macintosh notebooks are qualified with the current editing applications. The following applies to the editing system when running on a laptop.

- HD Capture on Macintosh notebooks is not supported
- Playback in full quality 10 bit mode is not supported



Qualified Macintosh Notebook	Graphics Cards	Supported With
MacBook Air 13" - 1.7 Ghz and higher i7 Dual-Core (Mid 2013) - Thunderbolt - 8 GB 1600Mhz DDR3L	Intel HD5000	Software Only Mojo DX
MacBook Air 13" - 2.0 GHz I7 Dual-Core Thunderbolt - 8 GB 1600MHz DDR3L	Intel HD4000	Software Only Mojo DX
MacBook Pro 15" 2.3/2.6/2.7 GHz I7 (Late 2013) Quad-Core - Retina & Thunderbolt 8 GB 1600Mhz DDR3L Memory	HD5000 GeForce GT 750M	Software Only Mojo DX Artist DNxIO
MacBook Pro 15" 2.3/2.6/2.7 GHz I7 (Mid/Late 2012) Quad-Core - Retina & Thunderbolt 8 GB 1600Mhz DDR3L Memory	HD4000 GeForce GT 650M	Software Only Mojo DX Artist DNxIO

## Feature Performance

A number of features in this editing application are processor-intensive. As a result, you might experience problems if you are working on an older system. The following chart shows the hardware that Avid has successfully qualified when using these features. For a list of the qualified systems, see [Qualified Workstations and Laptops](#).

Feature	Description	Recommended System
Editing High Resolution, High Frame Rate Media (UHD/4k in 59.94p)	16 GB RAM minimum, 32 GB recommended	<p>HP Z820, HP Z840, Dell 7810, Dell 7910, Lenovo P900, Lenovo P700</p> <ul style="list-style-type: none"> <li>• Dual 8 core (32 cores with Hyperthreading),</li> <li>• Dual 10 core (40 cores with Hyperthreading),</li> <li>• Dual 12 core (48 core with Hyperthreading)</li> <li>• NVIDIA 5200 PCIe Gen3 Gfx card (recommended)</li> <li>• NVIDIA 4200</li> </ul> <p>Mac Pro</p> <ul style="list-style-type: none"> <li>• 12 core (24 with Hyperthreading) 3 GHz</li> <li>• Dual AMD FirePro 500/700 Graphics card</li> </ul> <p>Storage: 10Gb Ethernet ISIS</p>
Editing High Resolution Media (Higher than 2K+)	16 GB RAM minimum	<p>Qualified PC Dual 6 Core or higher</p> <p>Qualified Mac Pro 6 core or higher, 12 core with Hyperthreading</p>
DMF and Background Transcode, Background Render	8 GB RAM minimum. 16 GB RAM recommended	<p>Qualified PC Dual 6 Core or higher</p> <p>Qualified Mac Pro 6 core or higher, 12 core with Hyperthreading</p>
Media Composer   Cloud	16GB RAM minimum. 24 GB or higher recommended depending upon system model.	i7 Quad core or higher with Hyperthreading
J2K Capture		<p>Qualified PC Dual 6 Core or higher</p> <p>Qualified Mac Pro 6 core or higher, 12 core with Hyperthreading</p>
XDCAM Long GOP 9-way MultiCam with high stream count sequences	Avid recommends 16 GB RAM	<p>Qualified PC Dual 6 Core or higher</p> <p>Qualified Mac Pro 6 core or higher, 12 core with Hyperthreading</p> <p>Storage: 10Gb Ethernet ISIS,</p>

<b>Feature</b>	<b>Description</b>	<b>Recommended System</b>
Stereoscopic 3D	For optimal performance with Stereoscopic 3D, use these higher performance systems. Avid recommends a minimum of 12GB RAM when using Stereoscopic 3D.	Qualified PC Dual 6 Core or higher Qualified Mac Pro 6 core or higher, 12 core with Hyperthreading
XDCAM HD50 Capture	Baseband capture through Nitris DX, Mojo DX	Qualified systems
HD RGB 4444 Apple ProRes 4444 DNxHD 4444	HD RGB capture requires a high end workstation with Nitris DX and fast storage.	Qualified PC Dual 6 Core or higher Qualified Mac Pro 6 core or higher, 12 core with Hyperthreading  Storage: 10Gb Ethernet ISIS
AMA (RED)	AMA is a processor intensive operation. Older platforms may not offer optimum performance. you will get better performance with higher end workstations.	Qualified Xeon Workstations
AMA (QuickTime)	AMA is a processor intensive operation. Lower end platforms may not offer optimum performance. Highly compressed codecs such as H.264 will exhibit minimal real-time performance.	Recommendation of qualified systems depends on your planned use of this feature. Heavy usage of highly compressed codecs requires the high end systems. (Dual 6 Core or Dual 8 Core systems)
AVCI-Intra Capture	AVC-Intra capture with software codecs is supported.	24 core and higher Windows systems only. Note: If problems are encountered, please use a Nitris DX w/AVC-I capabilities or ingest at another resolution like DNxHD and transcode to AVC I.

Feature	Description	Recommended System
AVCI-Intra	AVC-Intra(AVC-I) is a high quality, low bit-rate HD codec and is very CPU intensive.	<p><b>4-Way MultiCam Playback</b></p> <p>Dual Quad Core, Dual 6 Core or Dual 8 Core Systems</p> <p><b>Four Stream Playback:</b></p> <p>Dual Quad Core, Dual 6 Core or Dual 8 Core Systems</p> <p><b>AMA Workflows:</b> Dual Quad, Dual 6 or Dual 8 core systems</p>

## Compatibility Chart

The following table lists the NVIDIA<sup>®</sup> driver, QuickTime<sup>®</sup>, Windows Media<sup>™</sup>, shared storage, Sony<sup>®</sup> XDCAM<sup>™</sup>, Panasonic<sup>®</sup> P2, and Avid Artist Series versions that were qualified with the Avid editing applications.

**IMPORTANT: For information on third party support (for example, Sorenson, Boris, etc) see the third party's web site.**

Item	Versions	Comments
QuickTime Support	v7.7.9 (Windows) v10.x, (v7.x legacy) (Macintosh)	<p>Note: QuickTime v10X does not include QuickTime Pro options.</p> <p>Note: QuickTime is not supported with Windows 10.</p>
Windows Media Version Support	Windows Media Player 12 (for Windows 7)	<p>If you do not have Windows Media Player, access the download at <a href="http://www.microsoft.com">www.microsoft.com</a>.</p> <p>Windows Media export compatibility is subject to Microsoft Windows Media updates.</p>

Item	Versions	Comments
Avid Interplay Support	See <a href="#">Knowledge Base article</a> on compatibility.	IMPORTANT: The Avid Interplay components that get installed on the editing application must be updated to the Avid Interplay version that is released with the editing application. These include the Media Indexer, Interplay Access, Interplay Framework, Interplay Transfer Client and ProEncode Client. The Avid Interplay Server components can remain on the previous releases listed as supported. For details, see the “Avid Editing Application Compatibility with Interplay Releases” doc on the Knowledge Base.
NVIDIA Driver Support	375.86	See <a href="#">“Setting up the NVIDIA Card”</a> on <a href="#">page 26</a> . For setting up the driver for stereoscopic, see the NVIDIA setup info in the Stereoscopic 3D Workflow Guide.
Shared Storage Support	Avid NEXIS and Avid ISIS®.	See <a href="#">“Shared Storage Support”</a> on <a href="#">page 27</a> .
Sony XDCAM driver	v2.13 (XDCAM Transfer for Macintosh) Windows FAM v2.3.2 and VFAM v5.0.2	The VFAM firmware version for PDW-U1 is 2.600. The PDW-U2 is 2.810. The driver can be downloaded from Sony's website <a href="http://esupport.sony.com/">http://esupport.sony.com/</a> .
Panasonic P2 drive	(Macintosh) v3.1.7 (Windows) v2.24	There is currently no P2 writeback support for Macintosh clients.
Avid Artist Series (Euphonix)	EuControl software v3.4	See the User’s Guide for information on Artist Series Color setup information.

# Avid Editing Application Compatibility with Pro Tools

## General Co-Installation Notes:

- Install Pro Tools first and then Media Composer.
- You must uninstall all older versions of Media Composer or Pro Tools before installing newer versions.
- Co-install does not support both applications launched simultaneously.
- When you uninstall Pro Tools, choose to uninstall just the application and not the audio drivers or the editing application no longer sees the devices. On a Macintosh Pro Tools 10 system, this is named the “Safe Uninstall.” On a Macintosh Pro Tools 11 system no uninstallation is required. On a Windows Pro Tools 10 or 11 system, you must select the first uninstall option - “Pro Tools Only” - which is not selected by default.
- Mojo SDI will not be supported with Media Composer or Pro Tools 11, but can still be connected in a co-install configuration for use with Pro Tools 10.
- If you install and configure Avid Mojo DX or Nitris DX hardware on your system, the editing application does not use any connected Pro Tools audio device for audio input/output operations. You can also use these audio devices with a software-only version of your Avid editing application.
- If you run into any issues, uninstall both applications and reinstall Pro Tools first, and then reinstall your editing application.
- Media Composer v5.0 and later and Pro Tools v8.0.3 and later do not include support for the Original Mbox. If you want to use the Original Mbox, you should use Media Composer v4.x and Pro Tools v8.0.1 instead.
- If you want to install your Avid editing application on a system with the Pro Tools Avid Video Engine installed, you must use one of the following configurations:
  - Media Composer v5.5/NewsCutter v9.5 and later with Pro Tools v9.0 or later.
  - Media Composer v5.0.x/NewsCutter v9.0.x with Pro Tools v8.5 or earlier.

# Co-installation Configurations and Audio Device Support

## Avid Pro Tools Applications

<b>Pro Tools Product</b>	<b>MC/NC Software Only</b>	<b>MC/NC with Mojo DX</b>	<b>MC/NC/ with Nitris DX</b>
Pro Tools Software Only	Co-install	Co-install	Co-install
Pro Tools HD Native	Co-install/ Audio Device	Co-install	Co-install
Pro Tools HD	Co-install/ Audio Device	Co-install	Co-install
Pro Tools HD, with chassis	Not Tested	Not Tested	Not Tested

## Avid Mbox Family Audio Devices (3rd Generation)

<b>Audio Device (Interface)</b>	<b>MC/NC Software Only</b>	<b>MC/NC with Mojo DX</b>	<b>MC/NC/ with Nitris DX</b>
Mbox (USB)	Co-install/ Audio Device	Co-install	Co-install
Mbox Pro	Co-install/ Audio Device	Co-install	Co-install
Mbox Mini (USB)	Co-install/ Audio Device	Co-install	Co-install

## Avid Mbox 2 Family Audio Devices

<b>Audio Device (Interface)</b>	<b>MC/NC Software Only</b>	<b>MC/NC with Mojo DX</b>	<b>MC/NC/ with Nitris DX</b>
Mbox 2 (USB)	Co-install/ Audio Device	Co-install	Co-install

<b>Audio Device (Interface)</b>	<b>MC/NC Software Only</b>	<b>MC/NC with Mojo DX</b>	<b>MC/NC/ with Nitris DX</b>
Mbox 2 Pro (1394)	Co-install	Co-install	Co-install
Mbox 2 Mini (USB)	Co-install/ Audio Device	Co-install	Co-install
Mbox 2 Micro (USB)	Co-install	Co-install	Not tested

### Other Avid Audio Devices

<b>Audio Device (Interface)</b>	<b>MC/NC Software Only</b>	<b>MC/NC with Mojo DX</b>	<b>MC/NC/ with Nitris DX</b>
Digi 002 (1394)	Co-install/ Audio Device (Windows)	Co-install	Co-install
Digi 003 (1394)	Co-install	Co-install	Co-install
Eleven Rack (USB)	Not Supported	Not Supported	Not Supported
Fast Track Pro (USB)	Audio Device	Not Supported	Not Supported

## External Controllers

Your Avid editing application supports the following external fader controllers or mixers for automation gain and pan recording or as control surfaces:

- Digi 002 (Windows only)
- Command|8
- Avid Artist Control
- Avid Artist Mix



- Avid Artist Transport
- Avid Artist Color

External controllers or mixers are optional. They are not required for you to perform automation gain or pan recording on an Avid editing system.

The following table compares Avid external controllers and mixers.

<b>Feature</b>	<b>Digi 002 (MC only)</b>	<b>Command  8</b>	<b>Avid Artist Control</b>	<b>Avid Artist Mix</b>	<b>Avid Artist Transport</b>	<b>Avid Artist Color</b>
Control surface for transport controls and other functions	Yes	Yes	Yes	Yes (transport only, no soft keys)	Yes	
Provides audio play, input, and output	Yes	No	No	No	No	
Record automation gain	Yes	Yes	Yes	Yes	No	
Record automation pan	Yes	Yes	Yes	Yes	No	
Flying faders	Yes (8)	Yes (8)	Yes (4)	Yes (8)	No	
Touch-sensitive faders	Yes	Yes	Yes	Yes	No	
Touch-sensitive panners	No	No	Yes	Yes	No	
Solo/mute	Yes	Yes	Yes	Yes	No	
Supports audio mixing	No <sup>a</sup>	No	No	No	No	
Latch mode (also known as Snap mode)	Yes	Yes	Yes	Yes	No	
Number of steps of fader accuracy	1024	1024	1024	1024	Not applicable	

Feature	Digi 002 (MC only)	Command  8	Avid Artist Control	Avid Artist Mix	Avid Artist Transport	Avid Artist Color
---------	-----------------------	---------------	---------------------------	--------------------	--------------------------	----------------------

- a. The Digi 002 can be used as a standalone audio mixer but not at the same time as it is being used as an automation gain or automation pan controller or control surface.

For more information on using these external fader controllers or mixers, see “Recording Automation Gain or Automation Pan Information” in the Help.

## Setting up the NVIDIA Card

To set up the NVIDIA card, you must make sure you have the correct display driver version (install the display driver if necessary, and set the correct display settings. See the “[Compatibility Chart](#)” on page 20 for information on the supported driver(s).

Prior to setting up the NVIDIA card, check to make sure you have the correct display driver version. If you do not have the correct NVIDIA driver, you can install it from the Utilities folder that installs with your Avid application.

Installation files for these drivers are installed in the folder Program Files\Avid\Utilities\nVidia.

### To check the NVIDIA display driver version:

1. Right-click the Desktop and select NVIDIA Control Panel. You can also open the Windows Control Panel and double-click the NVIDIA Control Panel icon.
2. Click System Information at the bottom left corner of the NVIDIA Control Panel.

The version number is listed in the Graphics card information section on the ForceWare version line.

### To install the NVIDIA display driver:

1. Navigate to Program Files\Avid \Utilities \nVidia and double-click the folder that corresponds to your operating system.
2. Double-click the file for the applicable driver.
3. Follow the on-screen instructions, and then restart your system.

### To setup multiple displays:

1. Right-click the Desktop, and select Nvidia Control Panel.
2. In the settings window in the left of the window, click Set up multiple displays.
3. Select or deselect the desired monitors listed.

### To set the Driver for Avid Editing Environments

1. Right-click the Desktop, and select Nvidia Control Panel.
2. Click Manage 3D Settings.
3. Click the Global Setting tab.
4. Under Global presets, select Base Profile.
5. Scroll to locate the Power Management Mode. Select Prefer maximum performance.
6. Click Apply.

Reboot after installing the Nvidia software even if you are not prompted to do so. Never use the Windows “roll back driver” feature on the Nvidia driver. The driver version must match the rest of the components the Nvidia installer installs.

## Shared Storage Support

The editing application has been tested in a shared storage environment with the following.

<b>Editing Application Operating System</b>	<b>ISIS Clients</b>	<b>ISIS   2500- ISIS 2000 Server ISIS   5500- ISIS 5000 Server ISIS   7500- ISIS 7000 Server</b>	<b>Avid NEXIS   PRO (ISIS   1000 Server)</b>	<b>Avid NEXIS Client and Avid NEXIS Server</b>
Windows 10	v4.7.9, v4.7.10, v5.0	v4.7.9, v4.7.10	v5.0	v6.0.x v6.1.x v6.2.x v7.1.x
Windows 8.1	v4.7.10, v5.0	v4.7.10	v5.0	v6.0.x v6.1.x v6.2.x v7.1.x
Windows 8	v4.5, v4.6.1, v4.7 - v4.7.4, v4.7.5 - v4.7.10, v5.0 <sup>a</sup>	v4.2.2 Kit, v4.5, v4.6.1, v4.7 - v4.7.4, v4.7.5	v5.0	v6.0.x v6.1.x v6.2.x v7.1.x
Windows 7 64-bit	v4.2, v4.5, v4.6.1, v4.7 - v4.7.4, v4.7.5 - v4.7-10, v5.0	v4.2.2 Kit, v4.5, v4.6.1, v4.7 - v4.7.4, v4.7.5	v5.0	v6.0.x v6.1.x v6.2.x v7.1.x

<b>Editing Application Operating System</b>	<b>ISIS Clients</b>	<b>ISIS   2500- ISIS 2000 Server ISIS   5500- ISIS 5000 Server ISIS   7500- ISIS 7000 Server</b>	<b>Avid NEXIS   PRO (ISIS   1000 Server)</b>	<b>Avid NEXIS Client and Avid NEXIS Server</b>
Macintosh v 10.10	v4.7.4, v4.7.5 - v4.7.10, v5.0	v4.7.4, v4.7.5	v5.0	v6.0.x v6.1.x v6.2.x v7.1.x
Macintosh v10.11.x	v4.7.7 - v4.7.10	v4.7.7	v5.0	v6.0.x v6.1.x v6.2.x v7.1.x

a. ISIS Client v5.0 is applicable to ISIS | 1000 server only.

## Legal Notices

Product specifications are subject to change without notice and do not represent a commitment on the part of Avid Technology, Inc.

This product is subject to the terms and conditions of a software license agreement provided with the software. The product may only be used in accordance with the license agreement.

This product may be protected by one or more U.S. and non-U.S. patents. Details are available at [www.avid.com/patents](http://www.avid.com/patents).

No part of this document may be reproduced or transmitted in any form or by any means, electronic or mechanical, including photocopying and recording, for any purpose without the express written permission of Avid Technology, Inc.

Copyright © 2016 Avid Technology, Inc. and its licensors. All rights reserved.

Portions © Copyright 2003-2007 of MOG Solutions.

### Attn. Government User(s). Restricted Rights Legend

U.S. GOVERNMENT RESTRICTED RIGHTS. This Software and its documentation are "commercial computer software" or "commercial computer software documentation." In the event that such Software or documentation is acquired by or on behalf of a unit or agency of the U.S. Government, all rights with respect to this Software and documentation are subject to the terms of the License Agreement, pursuant to FAR §12.212(a) and/or DFARS §227.7202-1(a), as applicable.

### Trademarks

Avid, the Avid Logo, Avid Everywhere, Avid DNXHD, Avid DNXHR, Avid Nexis, AirSpeed, Eleven, EUCON, Interplay, iNEWS, ISIS, Mbox, MediaCentral, Media Composer, NewsCutter, Pro Tools, ProSet and RealSet, Maestro, PlayMaker, Sibelius, Symphony, and all related product names and logos, are registered or unregistered trademarks of Avid Technology, Inc. in the United States and/or other countries. The Interplay name is used with the permission of the Interplay Entertainment Corp. which bears no responsibility for Avid products. All other trademarks are the property of their respective owners. For a full list of Avid trademarks, see: <http://www.avid.com/US/about-avid/legal-notices/trademarks>.

Adobe and Photoshop are either registered trademarks or trademarks of Adobe Systems Incorporated in the United States and/or other countries. Apple and Macintosh are trademarks of Apple Computer, Inc., registered in the U.S. and other countries. Windows is either a registered trademark or trademark of Microsoft Corporation in the United States and/or other countries. All other trademarks contained herein are the property of their respective owners.

Avid Media Composer ReadMe • Created 6/1/17