

Avid Technology, Inc.

Avid LeaderPlus[™]

Version 5.2.28 Release Notes

This document supplements the “Avid LeaderPlus Operations Manual” available in PDF and is included on the installation CD as well as the Avid LeaderPlus Version 5.2 Release Notes.

Updated hardware and software compatibility information is included as well as new features, feature enhancements, and a list of known problems and workarounds.

This version of LeaderPlus increases stability for larger election setups, as well as increases speed and responsiveness for users. The majority of the program remains the same eliminating the need for retraining for the user.

NOTE: LeaderPlus Clients prior to LeaderPlus 5.2.28 are not compatible with this version. LeaderPlus Databases created in versions 5.0, 241, 5.1.5, and 5.2.1 are not compatible with LeaderPlus 5.2.28. You must use the Database tool in the LeaderPlus 5.2.28 Server application to either create new databases or to apply a conversion script. A conversion script must only be run at the direction of an Avid support engineer.

Table of Contents

Other Documentation	3
Hardware and Software Compatibility Requirements	3
LeaderPlus Server Requirements	3
LeaderPlus Client Requirements.....	3
LeaderPlus Web Polling Clients	3
Network and Peripheral Devices	4
LeaderPlus 5.2 Installation Overview	4
Server.....	4
Creating a Database on the Server	4
Conversion Scripts.....	5
Clients.....	5
Windows XP Service Pack 2 Support.....	5
Fixed Problems & Enhancements.....	6
Web Polling	6
Air Races Touch Screen	8
Vote Percentage	9
Airable Race Designation	9
User Profile Setup	10
Allow Winner Flag Security Option	10
Print Reports	10
Pre-Election analysis	11
Race Results.....	11
Total or Partial Vote Entry.....	11
Comparison, Summing Races (Principal or 'Top' Races).....	11
Projected Winner Checkbox.....	11
Automatic Win Override – Win Flag.....	12
Air Races	12
Race Results.....	12
Multiple Winners – Win Flag.....	12
Displayed Vote percentages.....	12
Air This Race Now	12
Known Problems and Limitations	12
Assigning Candidate Logos to Proposition Races	12
Wire Races Used as Summing Races	13
Install Program Hangs.....	13
F4 or F5 with No Races Defined	13
10 Digit Values for Votes Not Supported.....	13
Web Access and Lowering of Votes.....	13

Other Documentation

- The *Avid LeaderPlus Operations Manual v 5.2* available as a PDF on the installation CD.
- The *LeaderPlus v5.0 Installation Guide*, available as a PDF on the installation CD.
- The *LeaderPlus v5.2 User Guide*, available as a PDF on the installation CD.
- The *LeaderPlus v5.0 Database Utilities*, available as a PDF on the installation CD

Hardware and Software Compatibility Requirements

The following are specifications for LeaderPlus version 5.2.28.

LeaderPlus Server Requirements

- Requires a server running Microsoft Windows NT4.0 SP6 or Windows 2000 Server SP4.
- SQL Server Software - the MSDE version of SQL 2000 is available with the LeaderPlus 5.2 installation. This will offer some basic database maintenance capabilities. For complete SQL database maintenance, we recommend the full version of Microsoft SQL Server 2000. If the customer already has a Microsoft SQL Server, then the Enterprise Manager can be used to run database utilities. **NOTE: Microsoft SQL7 is not supported.**
- Internet Explorer 4.2 or higher
- Pentium processor running at a minimum of 500 MHz
- 512 MB of Ram
- 3.5" Disk Drive
- 8X or faster CD-ROM drive
- 20 GB Hard Disk
- Network Card
- Color VGA Monitor that supports 800x600, 1024x768 or 1280x1024
- LeaderPlus Server must be on the same domain as the LeaderPlus clients.

LeaderPlus Client Requirements

- Pentium PC with at least 250 MHz and 64 Meg of RAM
- Windows 2000 Professional, NT Workstation or Windows XP Professional software
- Internet Explorer 4.0 or higher
- Network Interface Card (NIC)
- Color VGA monitor that supports 1024x768 or 1280x1024
- Workstations connecting to a character generator require an RS-232 serial port

NOTE: LeaderPlus 5.2 may run on workstations running Windows 95 or 98 with lower hardware capabilities than those previously listed, but Avid does not recommend this as performance is compromised.

LeaderPlus Web Polling Clients

- Pentium PC with at least 500 MHz and 128 Meg of ram
- Windows 2000 Professional, NT Workstation or Windows XP Professional software
- Internet Explorer 4.0 or higher
- 2 – RS-232 ports
- Network Card

- Color VGA monitor that supports 1024x768 or 1280x1024

Network and Peripheral Devices

- Local area network (LAN) card (Contact Customer Service for current recommendation)
- NetBEUI or TCP/IP network protocol acceptable
- Network switch
- At least one available parallel port (if a local printer is desired)
- Character Generator
- Other peripheral devices and accessories such as printers, modems, mice, keyboards and cabling.

LeaderPlus 5.2 Installation Overview

Server

Prior to installing LeaderPlus v5.2, backup your existing Character generator (CG), Web output scripts, and Lead50.ini files (COM port settings, FTP and sign-on settings). Next, uninstall any previously installed version of LeaderPlus. The LeaderPlus v5.2 install software detects any older versions of LeaderPlus and recommends uninstalling them.

1. Install SQL MSDE 2000A which is included on the LeaderPlus installation CD. Microsoft SQL 2000 Enterprise Edition may be used instead of SQL MSDE 2000A but is not included on the LeaderPlus installation CD and is the responsibility of the customer to procure for their use.

NOTE: To use the full suite of SQL tools found in SQL Enterprise Manager, you will need Microsoft SQL 2000 Enterprise Edition (NOT the 64 bit version). This allows you to view and manage the LeaderPlus database. See related note in the **LeaderPlus 5.2 Installation Guide** on registering databases in Enterprise Manager.

2. Install LeaderPlus **server** software by selecting Setup.exe in the server folder. Choose to create LeaderPlus user.
3. Install client software on the server by selecting the Setup.exe in the client folder. If asked, select "Remove old version of LeaderPlus" (this only appears if version 4.x of LeaderPlus exists on the PC). Select the "typical" option.

NOTE: If a Read Only file is detected during the install process:

- A. Press the space bar. A dialog box appears.
- B. Press the Yes button on the dialog box.

Creating a Database on the Server

1. Open/start the server application.
2. Select Database Utilities.
3. Password should be left blank. Enter the name of your server. Press OK.
4. In the Election Databases panel, right mouse click on the Server:name.
5. Select New Database.
6. Enter the name of the new database. Example: LeaderPlus or Nov2004
7. Select Create.
8. After it has been successfully created, select OK. The new database name will appear under the server name in the Election Databases panel.

NOTE: You must use the Database tool in the LeaderPlus 5.2.28 Server application to create new databases. LeaderPlus Databases created in versions 5.0.241, 5.1.5, and 5.2.1 are not compatible with

LeaderPlus 5.2.28. A previously created database may still be used when the appropriate conversion script is applied. Before using a conversion script, contact Avid Customer Support for assistance.

Conversion Scripts

If there is a requirement to convert an existing database created in versions 5.0.241, 5.1.5, or 5.2.1 to the current 5.2.28 version an SQL conversion script must be run. Do not apply a conversion script without the direction of Avid Customer Support

WARNING: *Running the incorrect script against an existing database can leave that database in a single user mode which may only be corrected using SQL Enterprise Manager. In all cases prior to running any conversion scripts, perform a database backup.*

NOTE: *All of these update scripts will delete all existing users except the default "newstar" user in the older database. The users will need to be recreated after running any of these scripts.*

Clients

NOTE: *See separate document titled "LeaderPlus 5.x Installation Guide" for step by step installation details, and for instructions for installing LeaderPlus CLIENT application over an OLD VERSION 4.X version of LeaderPlus.*

To install client software :

1. Select the Setup.exe in the client folder.
2. If asked, select "Remove old version of LeaderPlus" (this only appears if version 4.x of LeaderPlus exists on the PC).
3. Select the "typical" option.

NOTE: *You do not need to install SQL MSDE 2000A on clients.*

Windows XP Service Pack 2 Support

For LeaderPlus server or client PCs running Windows XP Service Pack 2, the following changes must be made to their Windows Firewall settings. Steps 1-4 cover client only PCs, while steps 1, 2, and 5-9 cover the requirements for a server PC.

Client PC

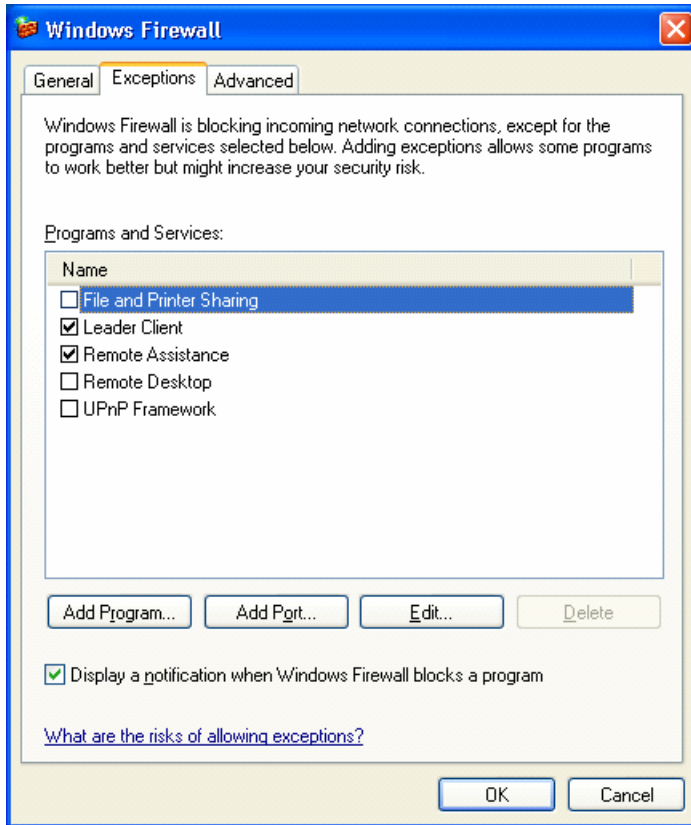
1. For PCs running the client, the following changes must be made to the Windows Firewall settings.
 - A. Open the *Windows Firewall* settings from the *Control Panel*.
 - B. On the *General* tab, the firewall should be ON and the "Don't allow exceptions" box should NOT be checked.
 - C. Click the *Exceptions* tab to add the LeaderPlus client.
 - D. Select the "Leader Client" from the *Add a Program* dialog list.
 - E. Click *Ok*. The "Leader Client" appears in the list of *Exceptions*.

Server PC

1. For PCs running the server, the following changes must be made to the Windows Firewall settings.
 - A. Perform steps A and B as shown in the client instructions above.
 - B. Click the *Exceptions* tab to manually add the LeaderPlus server.
 - C. Select the "Leader Server" from the *Add a Program* dialog list (if this is also a client PC, also add the Leader Client).
 - D. Also add the Microsoft SQL Server 2000 Desktop Engine (MSDE) database component (sqlservr.exe) for LeaderPlus to the exclusions list. To manually add this exclusion, click the *Add Program* button in the *Exceptions* list window. Click *Browse*, and browse to the

install directory for MSDE (the default location is “C:\Program Files\Microsoft SQL Server\MSSQL\Binn”). In this directory select “sqlservr.exe”, next, click *Open*.

With the required LeaderPlus server and MSDE items added to the *Exceptions* list the *Windows Firewall* dialog should look similar to the following graphic (the LeaderPlus client may be included if one is run on the server):

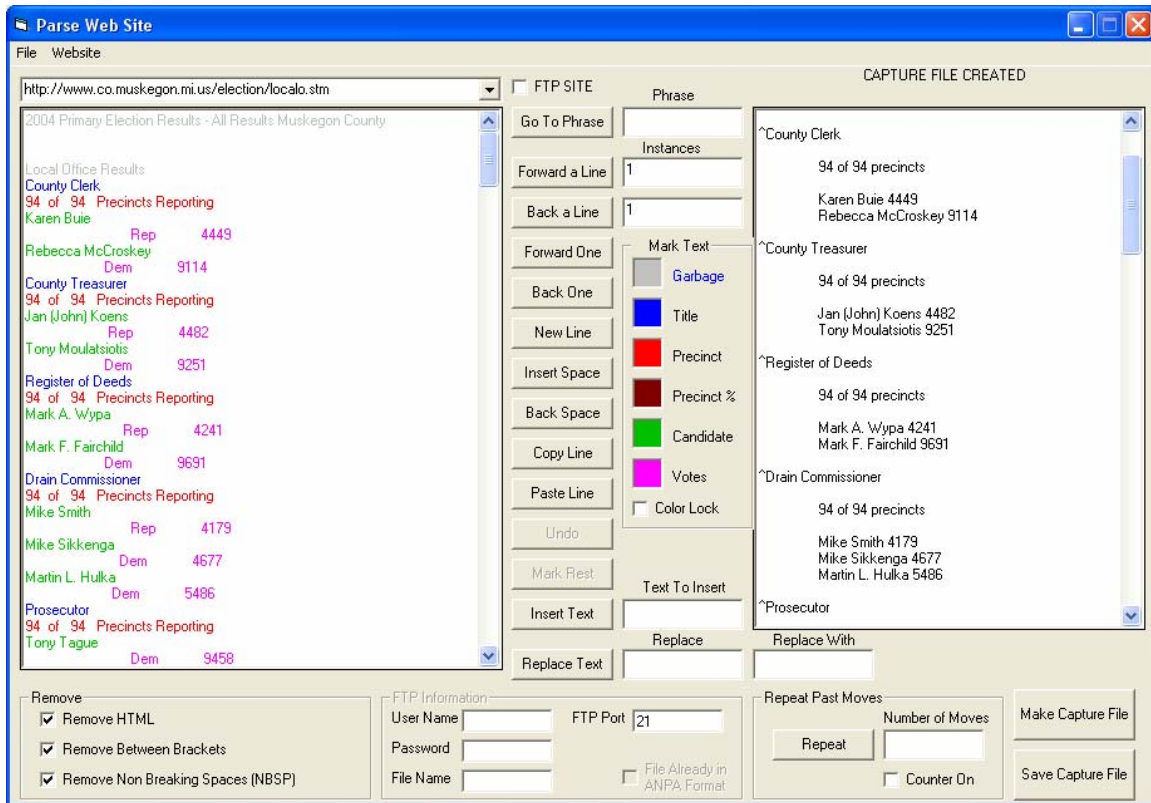


NOTE: If mapping to a shared directory on a LeaderPlus server PC is the Windows authentication method for the LeaderPlus client PCs, File and Printer Sharing must be added to the Exceptions list on the server PC.

Fixed Problems & Enhancements

Web Polling

Websites may be polled for Election Data. See the *Avid LeaderPlus 5.2 Operations Manual* for more information on Web Polling. There are limitations to this featured. For instance, it does not extract election data from PDF documents.



Web Polling in 5.2.28 allows the user to strip the HTML tags, info between brackets, and Non breaking Spaces (NBSPs) from the source as shown in the previous graphic. Use the check boxes in the Remove section, located in the bottom left corner of the Parse Web Site dialog box, to select what to strip away when the website is loaded. For most websites, these three will remain checked, however for some sites, such as text file websites, the user may want to configure these so that election data does not get stripped away. The checkboxes offer more flexibility so that even more sites can be accessed.

Air Races Touch Screen

As shown in the following graphic, you may now use the Touch Screen monitor to quickly recall races in the AirRaces section of LeaderPlus 5.2. You may also use this format with a standard VGA monitor and mouse. This new screen allows faster recall of HOT races without having to add them to an AirList. It uses PRODUCER type lists to generate selectable races.

Choose Race to Air

STATUS

CHOOSE RACE TO SEND TO PREVIEW

Hot Races

- ☒ =Updated
- ☒ =Leader Change
- ☒ =Winner Declared

Updated Lead Changes Winners Previous Races Next Races

132 Louisville Metro Council 26th Dist.-DEM	210 KY Senate 19th Dist.-DEM	211 KY Senate 35th Dist.-DEM	214 KY House 33rd Dist.-GOP	215 KY House 34th Dist.-GOP
217 KY House 43rd Dist.-DEM	224 Louisville Metro Council 6th Dist.-DEM	225 Louisville Metro Council 8th Dist.-DEM	226 Louisville Metro Council 12th Dist.-DEM	227 Louisville Metro Council 12th Dist.-GOP
228 Louisville Metro Council 14th Dist.-DEM	229 Louisville Metro Council 16th Dist.-DEM	230 Louisville Metro Council 22nd Dist.-DEM	231 Louisville Metro Council 24th Dist.-GOP	232 Louisville Metro Council 26th Dist.-DEM
323 District Judge KY 16th Division	324 Louisville Metro Council 6th Dist.-DEM	325 Louisville Metro Council 8th Dist.-DEM	326 Louisville Metro Council 12th Dist.-DEM	327 Louisville Metro Council 12th Dist.-GOP

AirList Producer

Skip Race Air Race Previous Lists Next Lists

Exit

It is not necessary to have a touch screen monitor. You may use this display with a mouse too. Floating your cursor over the buttons, displays the vote totals in a tool tip.

Vote Percentage

- Ability to **display** decimal percentages of votes in Race Results and Talent Screens. A new LeaderPlus System setting allows the client application to display votes with decimal places. The settings are:

Setting it to 0 = 33%

Setting it to 1 = 33.x%

Setting it to 2 = 33.xx%

Setting it to 3 = 33.xxx%

- Ability to **send** decimal percentages to the Character Generator. To display votes with decimals on the CG & Web modify the CG script. See the following:

[%] = 33%

(decimals are not shown, may not add up to 100%)

[%%] = 33.x%

(1 decimal place shown, may not add up to 100%)

[%%] = 33.xx%

(2 decimal places shown, may not add up to 100%)

[%%] = 33.xxx% (3 decimal places shown, the fourth decimal place is rounded to the third. For instance, 33.1339 becomes 33.134)



This setting is ignored in the Producer screen, which only shows whole numbers, such as 44%.

Airable Race Designation

In **Race Setup** there is a checkbox to the right of the Race number to identify whether the race is "Airable:" or whether it is allowed to go to the CG. When putting a race, which doesn't have Race is Airable checkbox checked, into an air list, using the Air Races/CG setup dialog, another dialog box informs you which races are not airable and puts the airable races on the screen.

Race Number: ... ☒ Race is Airable

Title1:

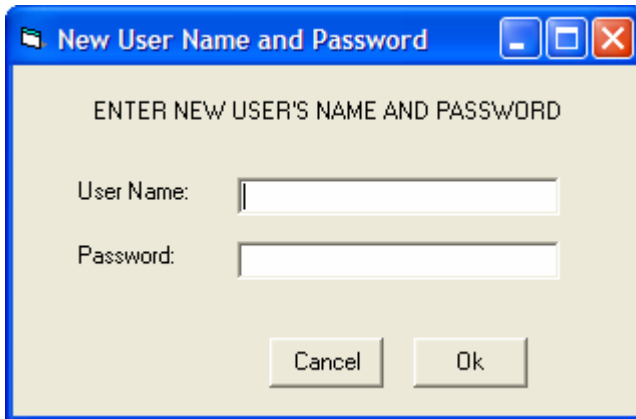
Title2: 9

Title3:

This is used as a filter for adding races to the Air Races/CG setup Air Races screen so you won't accidentally air a race that was not meant to Air. A race not marked, Race is Airable, may still be sent to an air list using the touch screen display.

User Profile Setup

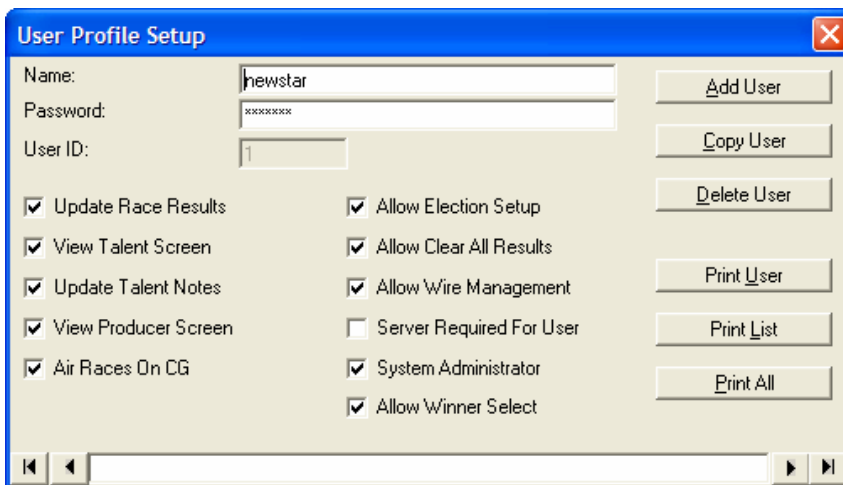
Copy user now asks you for the new user name and password, and then creates it, instead of creating multiple copies of the same user. If the password is left blank, it becomes whatever the user name is



A dialog box titled "New User Name and Password" with a blue title bar and standard Windows window controls. The main area is light beige and contains the text "ENTER NEW USER'S NAME AND PASSWORD". Below this, there are two input fields: "User Name:" and "Password:". At the bottom, there are two buttons: "Cancel" and "Ok".

Allow Winner Flag Security Option

Winner flagging prevents data entry people from accidentally selecting a winner race too early.



A dialog box titled "User Profile Setup" with a blue title bar and a close button. The main area is light beige and contains several input fields and checkboxes. The "Name:" field is filled with "hewstar". The "Password:" field is filled with "xxxxxxxx". The "User ID:" field is filled with "1". There are two columns of checkboxes: "Update Race Results", "View Talent Screen", "Update Talent Notes", "View Producer Screen", "Air Races On CG", "Allow Election Setup", "Allow Clear All Results", "Allow Wire Management", "Server Required For User", "System Administrator", and "Allow Winner Select". On the right side, there are five buttons: "Add User", "Copy User", "Delete User", "Print User", and "Print List". At the bottom, there is a scroll bar.

Print Reports

Notepad.exe is the application that opens capture files, CG scripts, and reports. This reduces the risk of corrupting capture files which may be accidentally saved as .rtf or .doc files rather than .txt files.

Pre-Election analysis

Pre-Election analysis can on be run by a System Administrator. The option appears in print reports, but may only be run by a user with System Administrator privileges.

Race Results

Total or Partial Vote Entry

You can choose Total Votes to always replace the current vote totals, or Add Votes to add these votes to the current vote totals. This option is similar to “add new votes to old” in LeaderDOS. See the *Avid LeaderPlus 5.2 Operations Manual* for more information.

☒ Total Votes
☐ Add Votes

Comparison, Summing Races (Principal or ‘Top’ Races)

If a race is a comparison or a summing race, the tile displays the race numbers that report to it. Additionally, you may not be able to enter votes in either the comparison or the summing race. Votes lowered in reporting races will “push” up the tree; the comparison or summing races always reflect changes made to races reporting to them. Winners may still be selected in the principal race.

A COMPARISON RACE OF VOTES AND PRECINCTS FROM RACES 202, 30...

Races>> * 278 selected ☒ Sort Candidates

Race: 102

U. S. Senate Select Winners - F2

Kentucky-DEM ☒ Total Votes ☐ Add Votes

Precincts Reporting 3,464 of 3,464 100%

Previous - F4 F5 - Next Save - F9

Win	Proj_V	Last	First	Party	Curren%	NEW VOTE	WIN	PROJ_WIN
<input checked="" type="checkbox"/>	<input type="checkbox"/>	Mongi D.			42,392 65	142,392	<input checked="" type="checkbox"/>	<input type="checkbox"/>
<input type="checkbox"/>	<input type="checkbox"/>	Williar D.			76,499 34	76,499	<input type="checkbox"/>	<input type="checkbox"/>

Projected Winner Checkbox

The projected winner is designed so an election supervisor may designate a candidate as a “Projected Winner”. Select the Projected Winner using the “Race Results” screen. Use the following token in the CG scripts to define a special graphic to identify the candidate.

The syntax for Projected winner is:

```
if [projected winner]
    buffer 'X' fld
else
    buffer ' ' fld
endif
```

Automatic Win Override – Win Flag

If an Automatic winner situation is setup for a race, LeaderPlus warns you if you manually try to override the auto win setting. If a principal race is set up to automatically win, and a winner is declared in a race reporting to it, that winner overrides any results found from the principal race's Automatic winner setup. You are encouraged to place Automatic winner selection on the principal (top) race(s).

Air Races

You may now air a race that was not in the list. You may manually key in more than one race to air out of order.

Race Results

Race “trees” are now dynamic, that is, the principal race always reflects what the lower races report to it, even if you lower votes. Previously, you could not lower votes in a summing race tree. The principal race in a comparison race is read-only (except for the winner flag) and reflects the vote totals of the “dominant” race, the race in the tree with the most votes.

Multiple Winners – Win Flag

LeaderPlus selects multiple winners with either automatic winner selection, and allows manual override of an Automatic.

Displayed Vote percentages

LeaderPlus does not round vote percentages except at the third decimal place. Previously, the value in the CG script, [%], would always try to force the percentage to equal 100% - this is no longer honored, and decimal place options are offered instead.

Air This Race Now

It is possible to enter more than one race in the air this races now box before returning to the list.

Known Problems and Limitations

Assigning Candidate Logos to Proposition Races

The Candidate LOGO is stored in the Candidate table in the LeaderPlus database. This presents a problem with Customers that want to assign a special logo for the Yes Candidate and the No candidate, but these logo's might be different in different races.

Workaround:For Proposition races you can store the logo information in the other1 and other2 fields in the Race Setup section.

Sample CG script section for Airing Races

When using a winner flag, the sample Candidate section would look as follows:

```
!CAND
  if [winner]
    buffer 'x' fld
  else
    buffer ' ' fld
  endif

  if [proposition]
    if [last name] = 'Yes'
buffer [other1] fld
    else
      buffer [other2] fld
    endif
  endif

  buffer [last name] fld [%] '%' fld
  buffer , [votes] ' votes' fld
!END
```

Wire Races Used as Summing Races

Currently, a wire race does not report to a summing race. If a wire race attempts to report to a summing race, every time the wire is updated, the entire race is added to the summing race. This is not recommended. Do not create this type of summing race.

Install Program Hangs

The install program for both the server and client component may hang with an hourglass mouse pointer on one or more “read-only” files during an upgrade launched as a “Repair” from within the installer.

Workaround: press the space bar or click the mouse on the desktop outside of the installer application and then proceed with the install by clearing the pop up dialog.

F4 or F5 with No Races Defined

Pressing F4 or F5 with no races defined in the database will cause a runtime error, this condition happens only when the database is empty.

10 Digit Values for Votes Not Supported

LeaderPlus does not support cumulative vote totals for any race being greater than 9 digits. Also, individual candidate vote totals within a race may not exceed this same 9 digit limit (999,999,999 votes).

Web Access and Lowering of Votes

Lowering of votes using the LeaderPlus Web Access interface does not work correctly. Workaround: Votes may only be lowered from the Races Results dialog or wire input.

Copyright and Disclaimer

This manual is copyright 2004, Avid Technology, Inc. All rights reserved. All Avid products are covered by U.S. and foreign patents, issued and pending. Information in this publication supersedes that in all previously published material. Specifications and price change privileges reserved.

The software described in this document is furnished under a license agreement and is protected under the copyright laws of the United States and other countries.

U.S. GOVERNMENT USERS RESTRICTED RIGHTS: Use, duplication, or disclosure by the U.S. Government is subject to restriction as set forth in subparagraph (b)(2) of the Technical Data and Computer Software-Commercial items clause at DFARS 252.211-7015, or in subparagraph (c)(2) of the Commercial Computer Software-Restricted Rights clause at FAR 52.227-19, as applicable.

Avid is a registered trademark of Avid Technology, Inc. Media Browse, ControlAir, iNEWS ControlAir and iNEWS are trademarks of iNEWS, LLC. Microsoft, the Microsoft logo, MS, MS-DOS, Win 32, Windows, Windows NT, Windows 2000, Windows NT Server, and the Windows operating system logo are registered trademarks of Microsoft Corporation in the United States of America and other countries. UNIX is a registered trademark of X/Open Company, Ltd. All other trademarks and registered trademarks used herein are the property of their respective owners.

Corporate Headquarters Avid Technology, Inc.

Avid Technology Park

One Park West

Tewksbury, MA 01876

United States

Tel: 978 640 6789 Fax: 978 640 1366

Avid Technology, Inc. - Madison

6400 Enterprise Lane, Suite 200

Madison, WI 53719

Tel: 608 274 8686 Fax: 608 273 5876

Avid LeaderPlus v 5.2 Release Notes

Part # 0130-06286-02 Rev. C

Sept 13, 2004

Printed in the United States of America

TLM